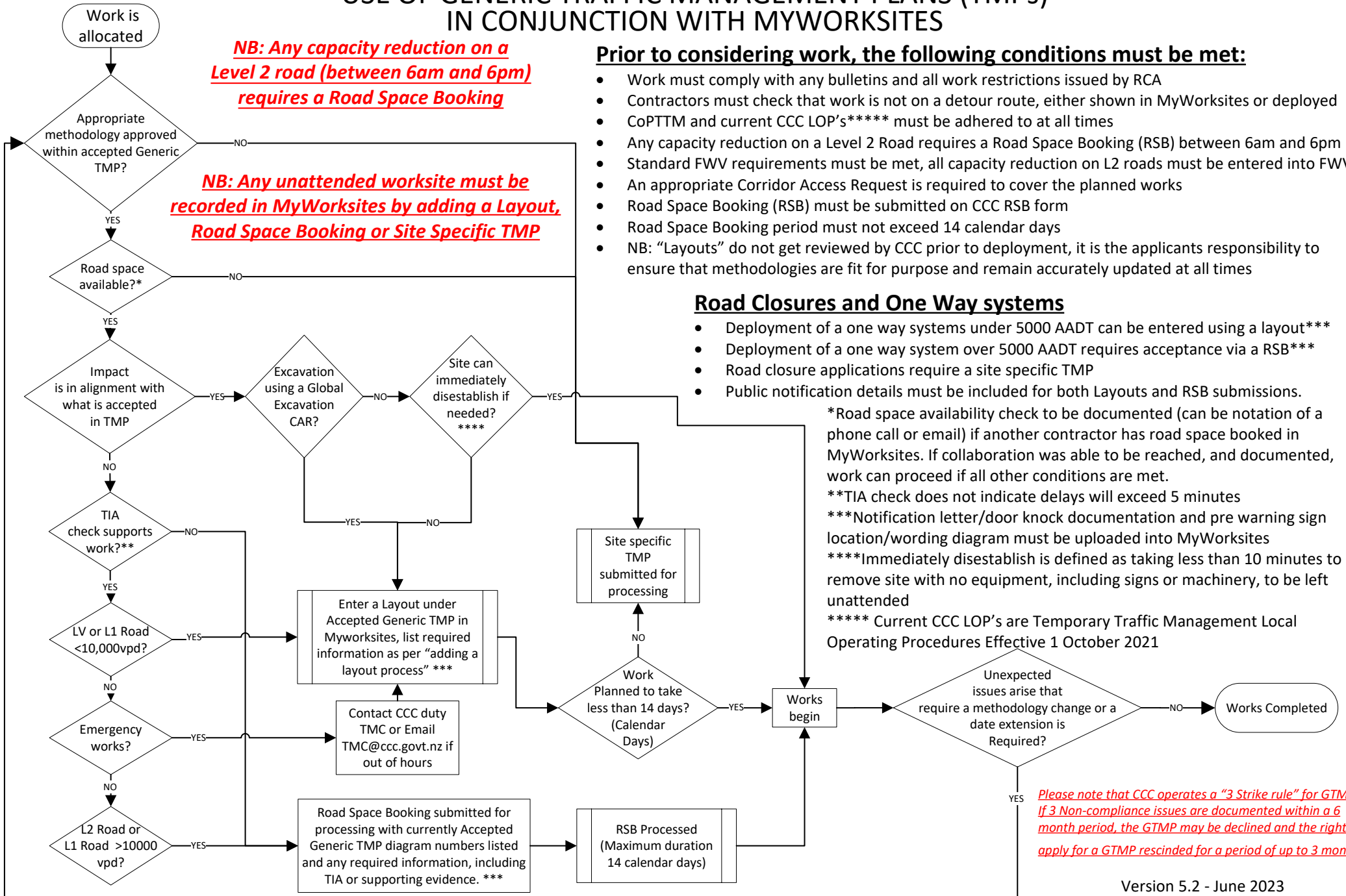


USE OF GENERIC TRAFFIC MANAGEMENT PLANS (TMPs) IN CONJUNCTION WITH MYWORKSITES



NB: Any capacity reduction on a Level 2 road (between 6am and 6pm) requires a Road Space Booking

NB: Any unattended worksite must be recorded in MyWorksites by adding a Layout, Road Space Booking or Site Specific TMP

Prior to considering work, the following conditions must be met:

- Work must comply with any bulletins and all work restrictions issued by RCA
- Contractors must check that work is not on a detour route, either shown in MyWorksites or deployed
- CoPTTM and current CCC LOP's***** must be adhered to at all times
- Any capacity reduction on a Level 2 Road requires a Road Space Booking (RSB) between 6am and 6pm
- Standard FWV requirements must be met, all capacity reduction on L2 roads must be entered into FWV.
- An appropriate Corridor Access Request is required to cover the planned works
- Road Space Booking (RSB) must be submitted on CCC RSB form
- Road Space Booking period must not exceed 14 calendar days
- NB: "Layouts" do not get reviewed by CCC prior to deployment, it is the applicants responsibility to ensure that methodologies are fit for purpose and remain accurately updated at all times

Road Closures and One Way systems

- Deployment of a one way systems under 5000 AADT can be entered using a layout***
- Deployment of a one way system over 5000 AADT requires acceptance via a RSB***
- Road closure applications require a site specific TMP
- Public notification details must be included for both Layouts and RSB submissions.

*Road space availability check to be documented (can be notation of a phone call or email) if another contractor has road space booked in MyWorksites. If collaboration was able to be reached, and documented, work can proceed if all other conditions are met.

**TIA check does not indicate delays will exceed 5 minutes

***Notification letter/door knock documentation and pre warning sign location/wording diagram must be uploaded into MyWorksites

****Immediately disestablish is defined as taking less than 10 minutes to remove site with no equipment, including signs or machinery, to be left unattended

***** Current CCC LOP's are Temporary Traffic Management Local Operating Procedures Effective 1 October 2021

Please note that CCC operates a "3 Strike rule" for GTMPs. If 3 Non-compliance issues are documented within a 6 month period, the GTMP may be declined and the right to apply for a GTMP rescinded for a period of up to 3 months.