



SEE PLAN  
TP337101

4m Shared Cycle / Pedestrian Path

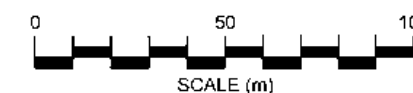
Christchurch Netball  
Centre Entrance/  
Exit

Hagley Avenue -  
Selwyn Street to St Asaph Street  
Existing Layout remains except  
for removal of North Side Cycle lane

Sheet 4

Sheet 2

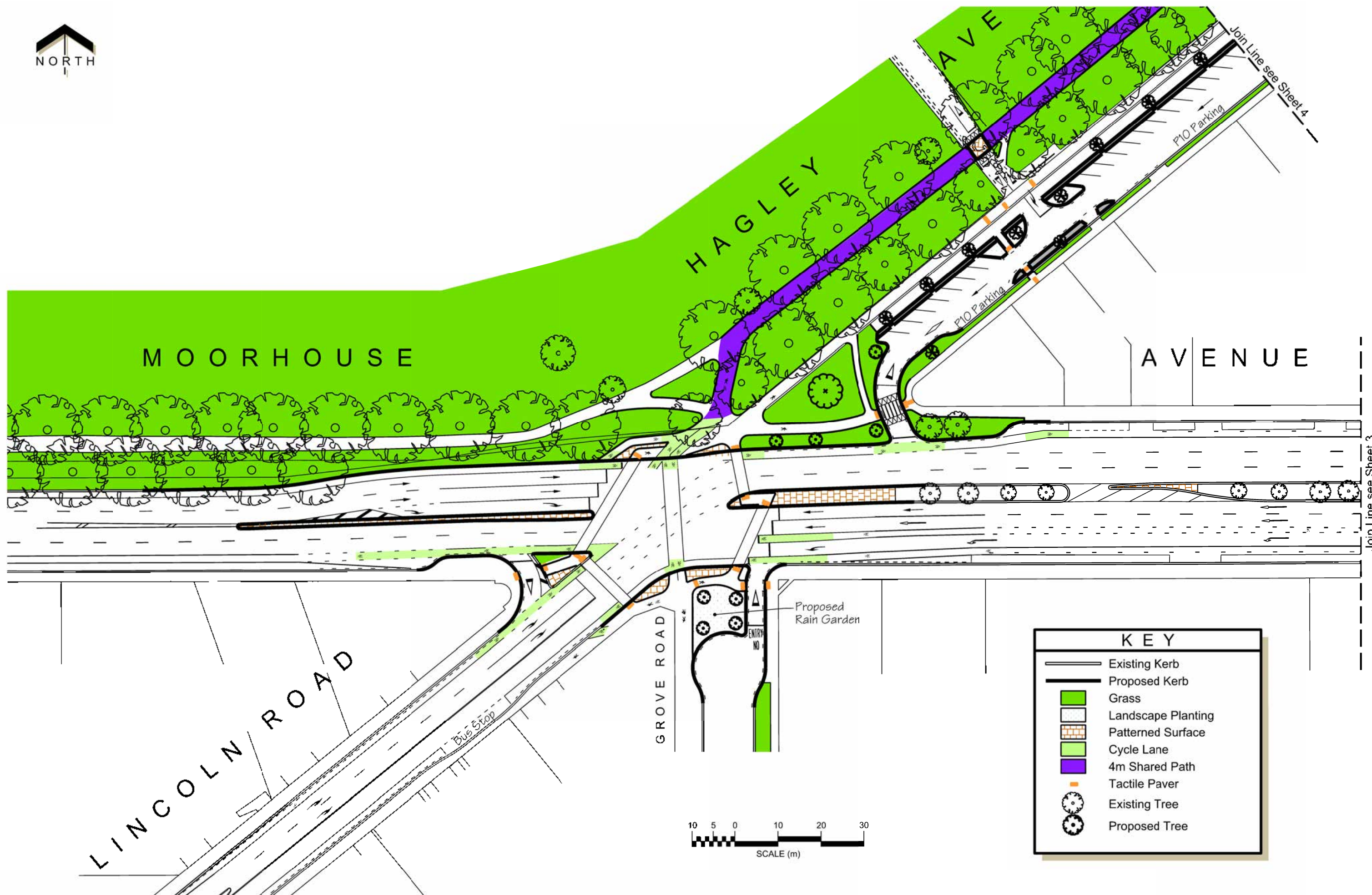
Sheet 3



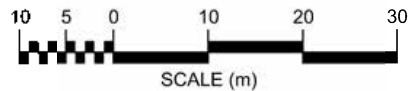




Original size mm  
100  
50  
30  
10  
0  
© Copyright Christchurch City Council © Aerial Photography Copyright Terralink International Ltd



KEY	
	Existing Kerb
	Proposed Kerb
	Grass
	Landscape Planting
	Patterned Surface
	Cycle Lane
	4m Shared Path
	Tactile Paver
	Existing Tree
	Proposed Tree





Join Line see Sheet 4

S T R E E T

M O O R H O U S E

A V E N U E

Join Line see Sheet 2

**KEY**

- Existing Kerb
- Proposed Kerb
- Landscape Planting
- Patterned Surface
- Cycle Lane
- Tactile Pavers
- Existing Tree

10 5 0 10 20 30  
SCALE (m)

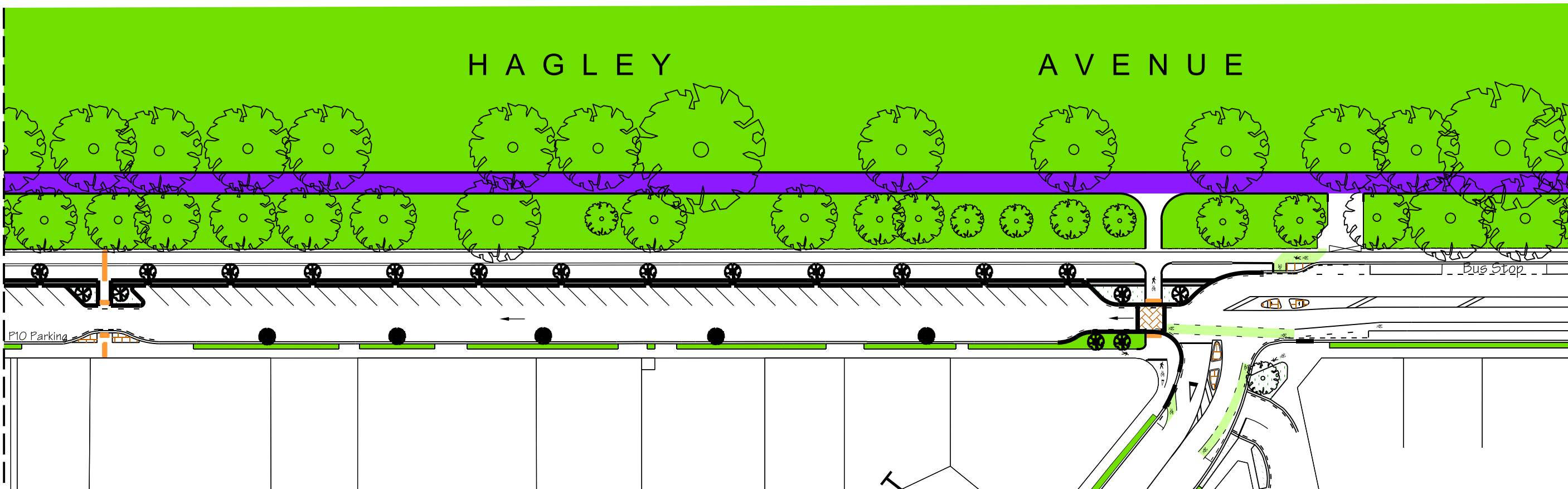




HAGLEY

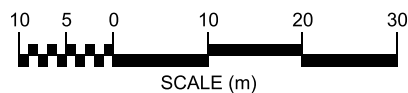
AVENUE

Join Line see Sheet 2



KEY

- Existing Kerb
- Proposed Kerb
- Landscape Planting
- Patterned Surface
- Grass
- 4m Shared Path
- Cycle Lane
- Tactile Pavers
- Existing Tree
- Proposed Tree

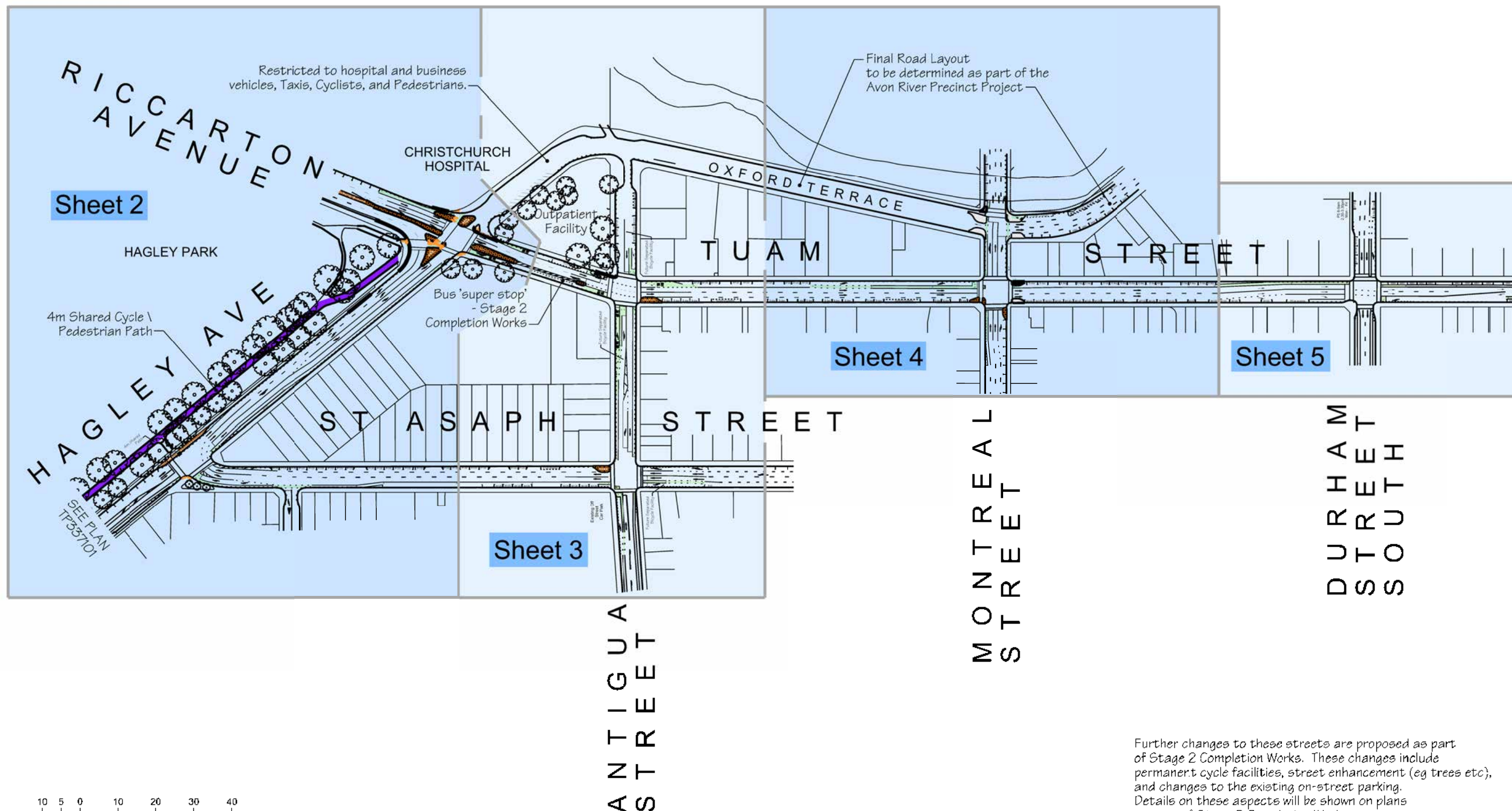


SELWYN STREET

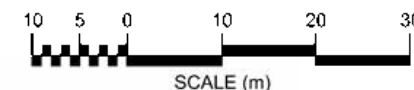
Join Line see Sheet 3



Original size mm  
100  
50  
30  
10  
0  
© Copyright Christchurch City Council © Aerial Photography Copyright Terralink International Ltd









© Copyright Christchurch City Council © Aerial Photography Copyright Terralink International Ltd



ST ASAPH STREET

ANTIGUA ST

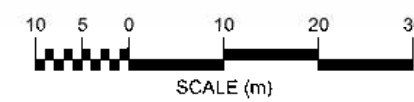
TUAM STREET

OXFORD TERRACE

OXFORD TERRACE

**KEY**

- Existing Kerb
- Proposed Kerb
- No Stopping
- Patterned Surface
- Cycle Lane
- Temporary Barrier
- M120 Metered 120 Minute Parking
- P120 Restricted 120 Minute Parking
- P30 Restricted 30 Minute Parking
- \$ day Daily Charge Parking
- Existing Tree



Further changes to these streets are proposed as part of Stage 2 Completion Works. These changes include permanent cycle facilities, street enhancement (eg trees etc), and changes to the existing on-street parking. Details on these aspects will be shown on plans as part of Stage 2 Completion Works.

Existing Off Street Car Park

Future Separated Bicycle Facility

Future Separated Bicycle Facility

Future Separated Bicycle Facility

Bus 'super stop' - Stage 2 Completion Works. Refer to page 21 for Indicative layout.

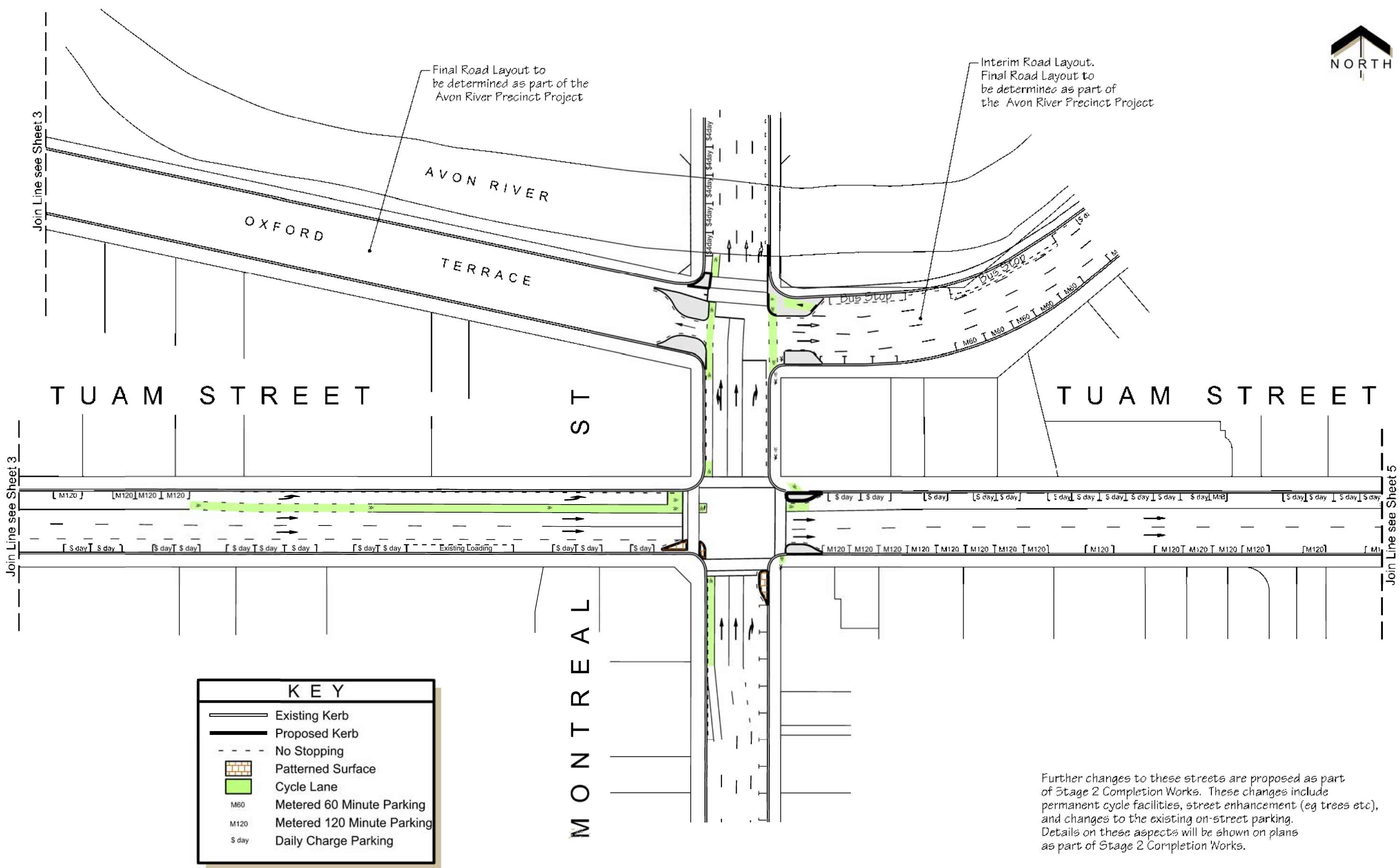
OUTPATIENT FACILITY

Restricted to Hospital and business vehicles, Taxis, Cyclists and Pedestrians.

Final Road Layout to be determined as part of the Avon River Precinct Project

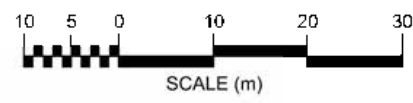


Original size mm  
100  
50  
30  
10  
0  
Join Line see Sheet 3  
Join Line see Sheet 5



KEY	
	Existing Kerb
	Proposed Kerb
	No Stopping
	Patterned Surface
	Cycle Lane
M60	Metered 60 Minute Parking
M120	Metered 120 Minute Parking
\$ day	Daily Charge Parking

Further changes to these streets are proposed as part of Stage 2 Completion Works. These changes include permanent cycle facilities, street enhancement (eg trees etc), and changes to the existing on-street parking. Details on these aspects will be shown on plans as part of Stage 2 Completion Works.







SOUTH

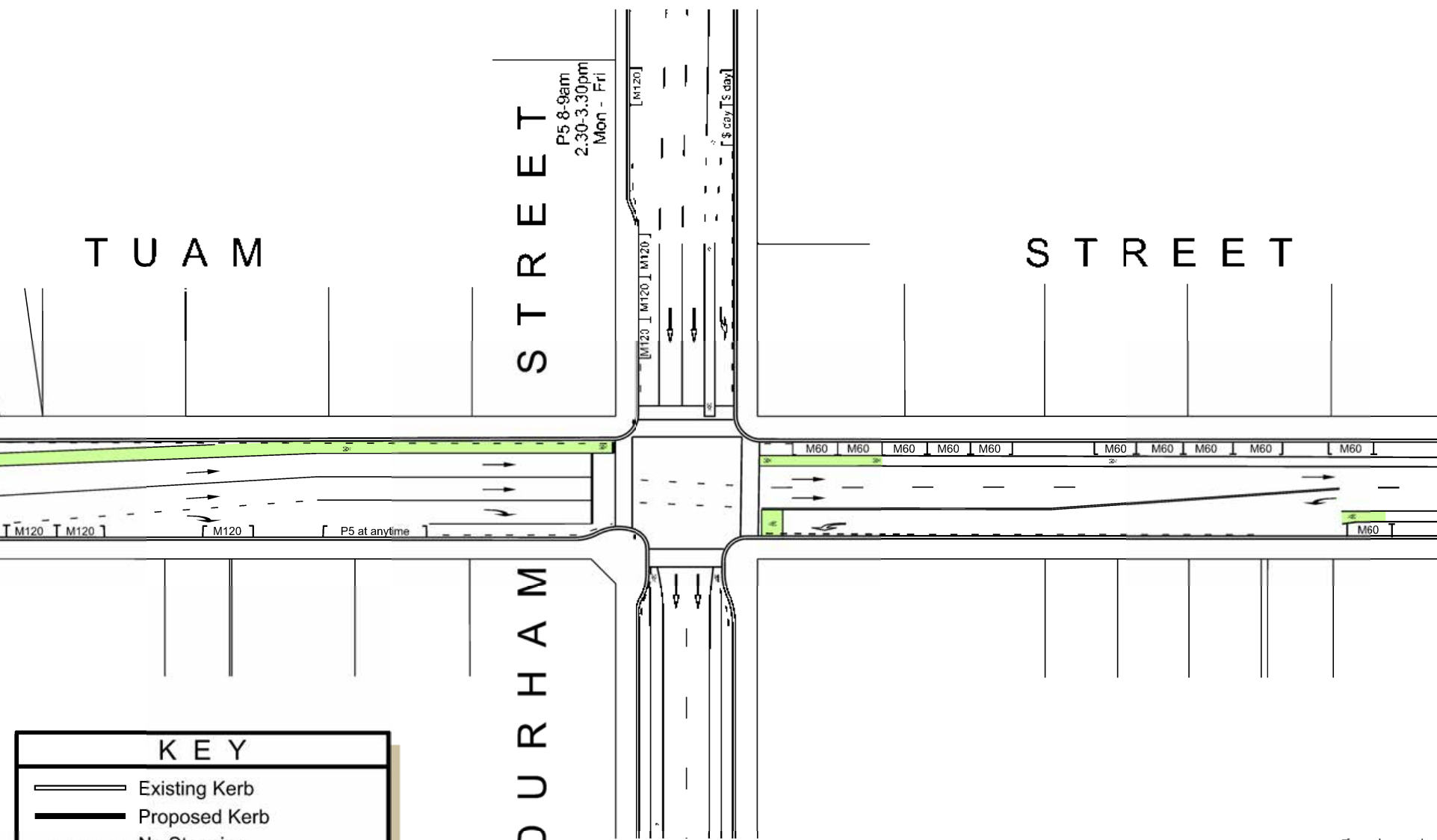
STREET

DURHAM

TUAM

STREET

Join Line see Sheet 4



KEY	
	Existing Kerb
	Proposed Kerb
	No Stopping
	Cycle Lane
M60	Metered 60 Minute Parking
M120	Metered 120 Minute Parking
P5 at anytime	Restricted 5 minute Parking

Further changes to these streets are proposed as part of Stage 2 Completion Works. These changes include permanent cycle facilities, street enhancement (eg trees etc), and changes to the existing on-street parking. Details on these aspects will be shown on plans as part of Stage 2 Completion Works.

