

Rebuilding the Lyttelton community

Facilities Rebuild Programme

September 2015 Update

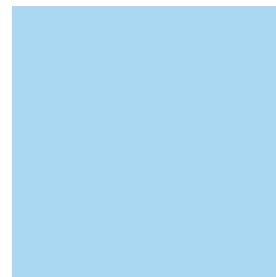


Photo courtesy of HEB Construction

Lyttelton community buildings



Left: Norman Kirk Memorial Pool, 54 Oxford Street, reopened in February 2015.



Above: Grubb Cottage, 62 London Street, one of Canterbury's historic buildings, reopened in August 2013.

There is a lot going on in Lyttelton.

Staff from Christchurch City Council's Facilities Rebuild programme are busy in Lyttelton repairing or rebuilding your community buildings.



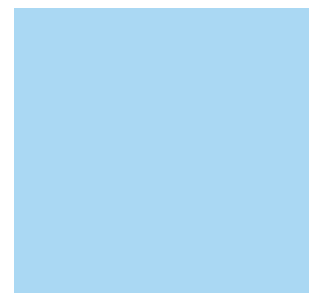
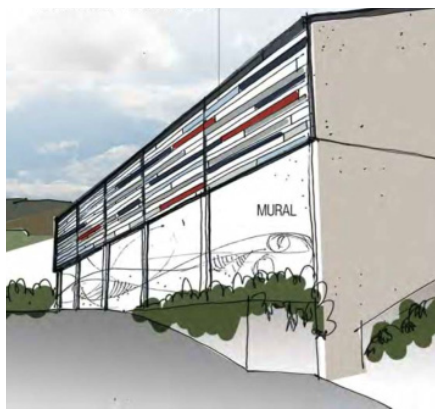
Above: Lyttelton Visitor and Information Centre, 20 Oxford Street, reopened in April 2013.



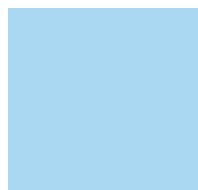
We are about to get started on the Library (and Service Centre) and the Community Board Boardroom.

The Recreation Centre and Trinity Hall are also currently being repaired and strengthened. Work is progressing well and the Centre is expected to be open by the end of 2015. To book this facility call (03) 941 8999.

Along with the Information Centre, Norman Kirk Memorial Pool, Grubb Cottage and Albion Square, we look forward to getting more community spaces back into community use.



Left: Lyttelton Recreation Centre, 25 Winchester Street, is reopening by the end of 2015.



Right: Albion Square, including the War Memorial, carved entranceway, a stage, terraces and play equipment opened in November 2014.



Lyttelton Library

The Lyttelton Library building is being repaired, strengthened and refurbished. In the Lyttelton Master Plan you told us you wanted a combined library and service centre and we've listened.

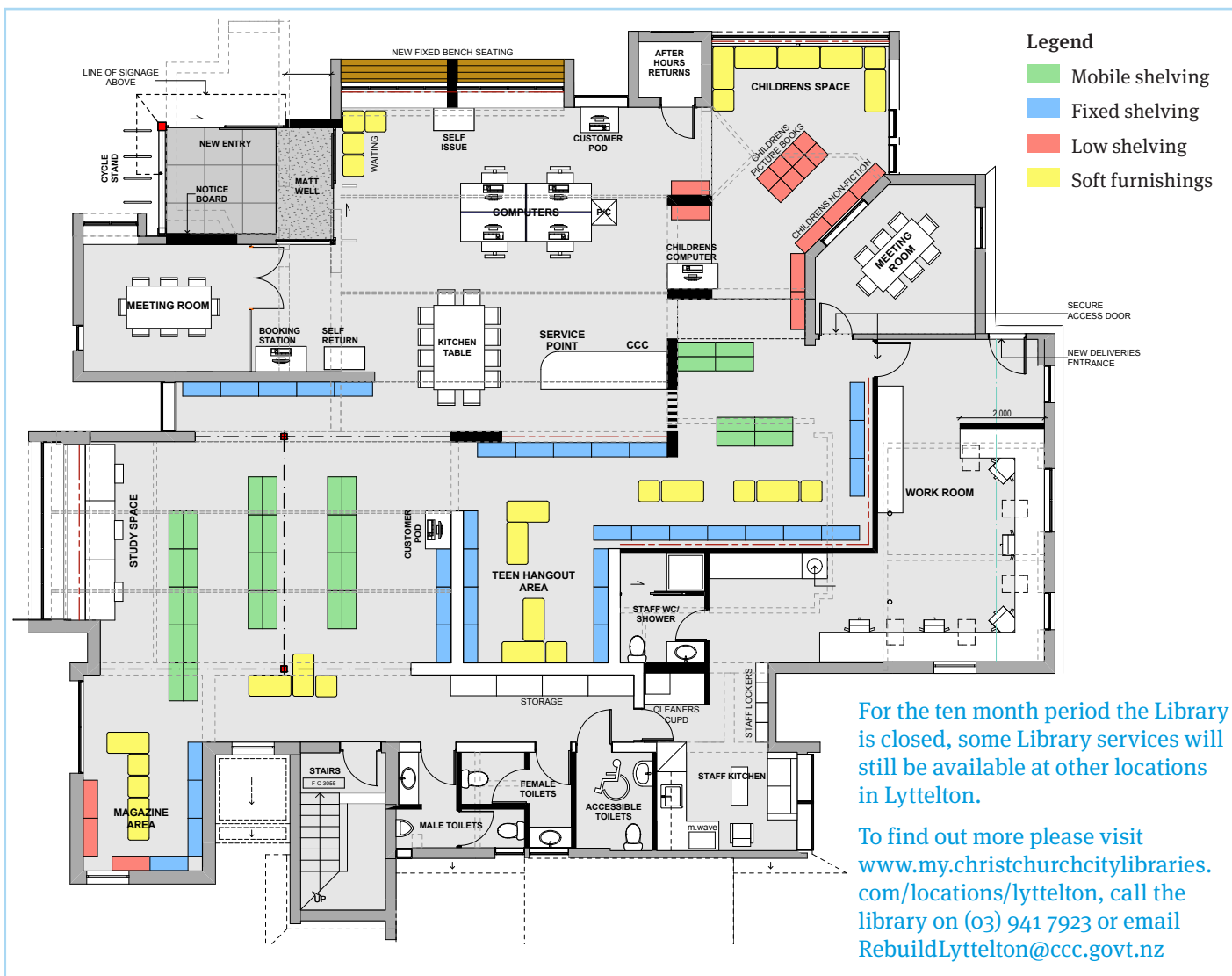


Features include:

- A repainted exterior, a new entrance, and other minor exterior upgrades
- A new layout for the interior including flexible space and bookable meeting rooms
- A layout that will make the most of the sun and natural light
- An improved magazine area, children's area and youth area
- A Council service desk for community inquiries, paying rates, dog registrations, etc

Build timeframe: February to November 2016

Reopening: December 2016



For the ten month period the Library is closed, some Library services will still be available at other locations in Lyttelton.

To find out more please visit www.my.christchurchcitylibraries.com/locations/lyttelton, call the library on (03) 941 7923 or email RebuildLyttelton@ccc.govt.nz

*This drawing shows the confirmed structural floor plan.
The final arrangement of furniture and shelving may change.*

Lyttelton/Mt Herbert Community Board Boardroom

The Council-owned building at 25 Canterbury Street is being converted into the new Community Board Boardroom.

Taking the best of the old, we are keeping the old board table, oak sideboard and Māori carving, and placing it in a renovated boardroom that can fit up to 30 people.

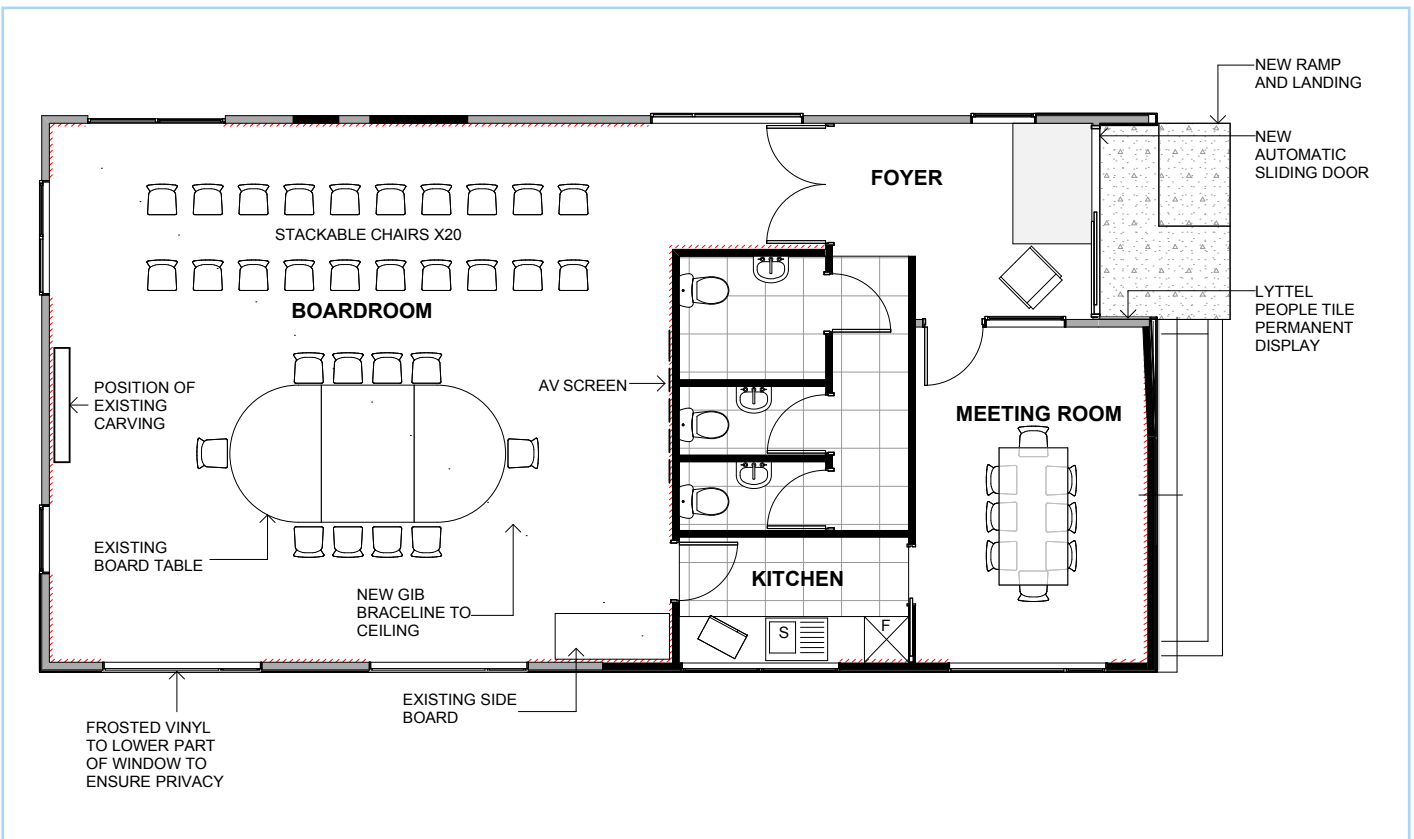
Other features include:

- An additional smaller meeting room
- Improved site appeal and street frontage
- Bookable meeting spaces

Build timeframe: February to July 2016

Reopening: August 2016

Council is working with the current tenants to help them find alternative premises.



*This drawing shows the confirmed structural floor plan.
The final arrangement of furniture and shelving may change.*