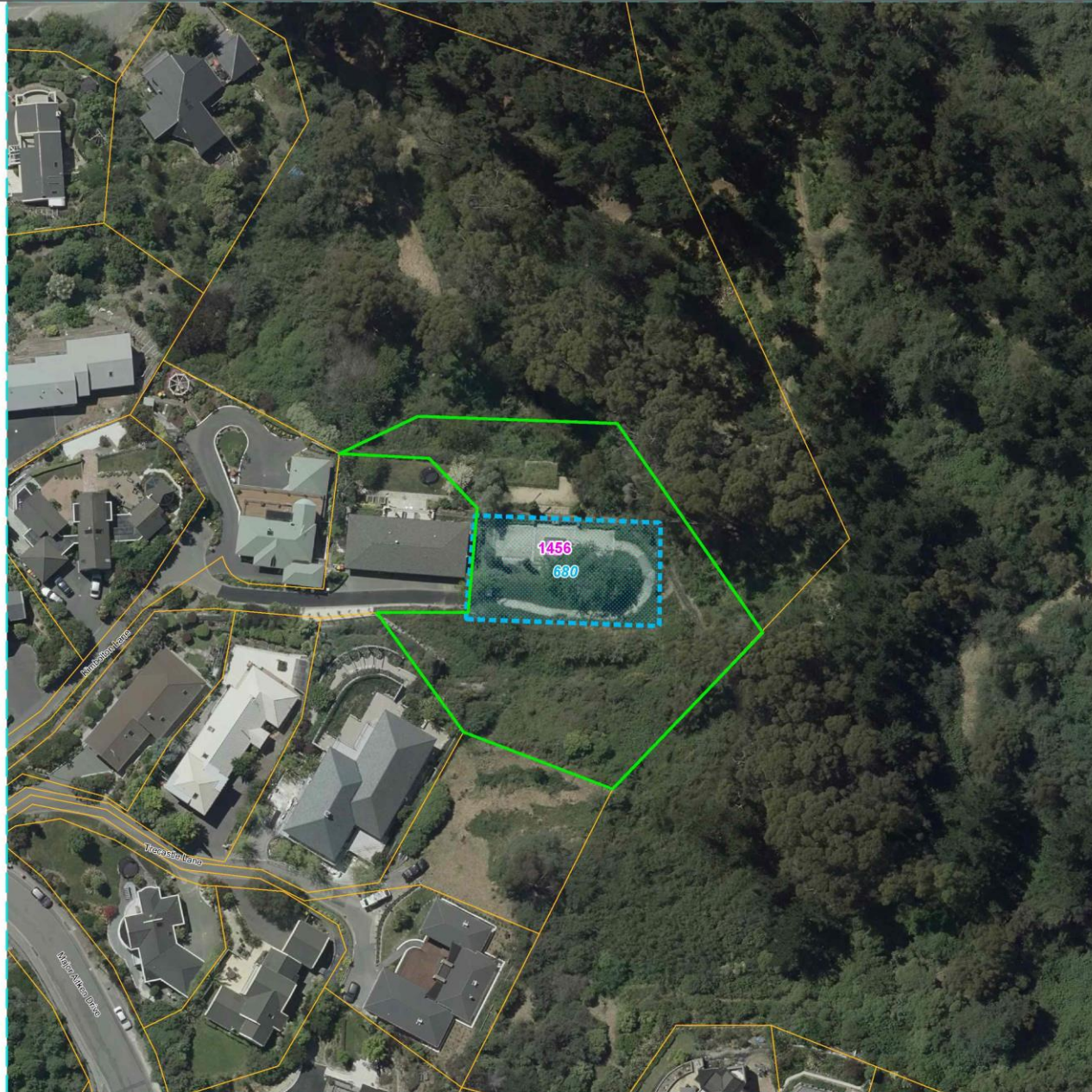


**Appendix 1, Attachment 15 – 29 Major Aitken Drive HAM image**

Council Submission on PC14

# CCC Submission on PC 13 Heritage Items and Settings

Aerial Map Reference: 858  
 Heritage Item Number: 1456  
 HeritageSetting Number: 680



Heritage Item and Setting boundaries are a visual reference only as they have been captured against specific sets of aerial photography.

The outer boundary of the setting is deemed to follow:

- a) the specific measurement(s) or description of the setting boundary where they are included on the aerial map; or if not specified, then;
- b) the cadastral boundary at the nearest point to the setting boundary shown on the aerial maps

The boundaries should only be referred to in relation to these specific photos, not survey information or building plans. There may be a visual distortion due to the angle of the aerial photography.

District Plan rules do not apply for overlays extending into the Coastal Marine Area. The Coastal Marine Area is as defined in the Resource Management Act.

	Proposed Heritage Item		Existing Heritage Item
	Proposed Heritage Setting		Existing Heritage Setting
	Heritage Item PC13 Submission		Heritage Setting PC 13 Submission

Scale 1 : 799  
 Aerial photography captured in: 2018  
 Published On: 6/04/2023