

Attachment 1

Community Facilities and Heritage Programme

NOTE: For reporting purposes, the status of a project will no longer be reported once the public opening has occurred. Completion of projects can take up to a year depending on the Defect Notification period.

- [Opened to Public - Community Facilities and Heritage](#)
- [Demolitions Completed - Community Facilities](#)
- [Active Projects - Community Facilities](#)
- [Active Projects - Heritage](#)
- [Projects On Hold or Removed from Programme - Community Facilities and Heritage](#)
- [Assets from Tranche 2 awaiting long term decision- Community Facilities](#)

Opened to Public - Community Facilities and Heritage

Opened to Public 2018



Langois-Eteveneaux Cottage - Heritage
Banks Peninsula CB / May 2018



Lyttelton Skate Park
Banks Peninsula CB / May 2018



Lyttelton Skate Park – Retaining Wall
Banks Peninsula CB / May 2018



South Brighton Camping Ground
Coastal- Burwood CB / March 2018



Addington Water Station - Heritage
Halswell/Hornby CB / 23 March 2018



Allandale Community Centre Repair
Banks Peninsula CB / Mid-Feb 2018



Community Centre – Cracroft (Old Stone House)
Spreydon-Cashmere CB / 7 February 2018

Opened to Public 2017



Spencer Park Campground Phase 2 new amenities buildings
Coastal- Burwood CB / 22 December 2017



Mona Vale Gatehouse
Fendalton-Waimairi-Harewood CB / 9 November 2017



Edmonds phone cabinet/telephone kiosk
Linwood-Central-Heathcote CB / 19 August 2017



Halswell Quarry – Crusher Building
Halswell-Hornby-Riccarton CB / 4 October 2017



Halswell Quarry – Old Stone House
Halswell-Hornby-Riccarton CB / 4 October 2017



Halswell Quarry – Singlemen's Quarters
Halswell-Hornby-Riccarton CB / 4 October 2017



Sumner Library, Community Centre & Museum
Linwood-Central-Heathcote CB / 19 August 2017



Bishopdale Library and Community Centre
Fendalton-Waimairi-Harewood CB / 22 July 2017



Hagley Park North - Bandsman Memorial Rotunda
Linwood-Central-Heathcote CB / 5 July 2017



Governors Bay Old School House
Banks Peninsula CB / 30 June 2017



Coronation Library (Akaroa)
Banks Peninsula CB / 16 June 2017



Akaroa Court House
Banks Peninsula CB / 16 June 2017



Wharenui Pool Building Strengthening
Halswell-Hornby-Riccarton CB / 13 June 2017



Lyttelton (Upham) Clock Tower
Banks Peninsula CB / 7 June 2017



Hagley Park North - RSA Bowling-Petangue Club
Linwood-Central-Heathcote CB / 5 June 2017



Sign of the Takahe
Spreydon-Cashmere CB / 22 May 2017



Custom House, Akaroa
Banks Peninsula CB / 8 April 2017



Parklands Library- Landscaping
Coastal- Burwood CB / 21 April 2017



Lyttelton Library, Service Centre and Integration with Library EQ Repairs
Banks Peninsula CB / 13 March 2017



Stoddart Cottage - Earthquake repairs
Banks Peninsula CB / March 2017



New Brighton Library EQ Repair
Coastal- Burwood CB / 13 Feb 2017



Kapuatohe Museum – Repair & Strengthen.
Fendalton-Waimairi-Harewood CB / February 2017



Pioneer Womens Shelter
Linwood-Central-Heathcote CB / February 2017

Opened to Public 2016



Governors Bay community centre
Banks Peninsula CB/ 14 December 2016



Heathcote Combined Community Facility
Linwood-Central-Heathcote CB/
14 December 2016



Memorial Cemetery Toilets – New Exeloo
Linwood-Central-Heathcote CB / 12 December
2016



Waimairi Cemetery Toilets- Strengthened
Fendalton-Waimairi-Harewood CB/12 December 2016



Woodham paddling pool
Linwood-Central-Heathcote CB /8 December 2016



Redcliffs Library
Linwood-Central-Heathcote CB / 2 December 2016



**Mona Vale Homestead – EQ Repair, Strengthening
and Maintenance**
Halswell-Hornby-Riccarton CB/ 25 November 2016



Avebury paddling pool
Linwood-Central-Heathcote CB / 23 November 2016



**St Martins Community Facility (Former St
Martins Public Library)**
Spreydon-Cashmere CB/ 21 November 2016



Edgar Macintosh paddling pool
Papanui-Innes CB / 20 November 2016



Abberley paddling pool
Fendalton-Waimairi-Harewood CB/17 November 2016



Spencer Park paddling pool
Coastal- Burwood CB/ 5 November 2016



Cave Rock Signal Box – EQ Repairs
Linwood-Central-Heathcote CB / November 2016



Sign of the Kiwi – EQ Repairs and Strengthening
Spreydon-Cashmere CB/ November 2016



Kaianga Hall toilets
Papanui-Innes CB / 21 October 2016



English Park- EQ Repairs
Papanui-Innes CB / 21 October 2016



Mona Vale Fernery – EQ Repairs and Strengthening
Halswell-Hornby-Riccarton CB / October 2016



Denton Oval - Grandstand & Amenities
Halswell-Hornby-Riccarton CB/ 28 September 2016



Lytelton Mt Herbert Board Room Replacement (25 Canterbury Street)
Banks Peninsula CB / 7 September 2016



Pigeon Bay Campground Toilet -
Banks Peninsula CB / 3 August 2016



Somerfield Community Centre
Spreydon-Cashmere CB / 15 July 2016



Governors Bay Headmasters House – EQ Repair, Strengthening and Maintenance
Banks Peninsula CB / 14 July 2016



Wharenui Rec Centre
Halswell-Hornby-Riccarton CB / 1 July 2016



Lytelton Plunket Rooms & Toy Library
Demolished & 15 year lease at Lyttelton Rec Centre
Banks Peninsula CB/ July 2016



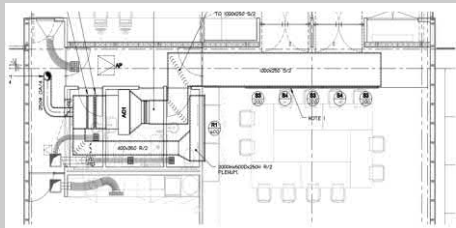
180 Smith Street - Library Archive Building
Linwood-Central-Heathcote CB / 30 June 2016



Rawhiti Domain - Golf Club Buildings
Coastal- Burwood CB / 23 June 2016



Spencer Park Campground Phase 2 new amenities buildings
Coastal- Burwood CB / 10 June 2016



Upper Riccarton Library
Halswell-Hornby-Riccarton CB
Phase 2 Completed 31st May 2016



Fendalton Community Centre
Fendalton-Waimairi-Harewood CB / 20 May 2016



Aranui Community Centre Rebuild- New Build
Coastal- Burwood CB / 19 May 2016



Halswell Domain toilet
Halswell-Hornby-Riccarton CB / 13 May 2016



Horseshoe Lake toilets
Coastal- Burwood CB / 13 May 2016



Parklands Library- Phase 1 Stormwater & Sanitary Services Repair
Coastal- Burwood CB / 13 May 2016



Mona Vale Lode – EQ Repair, Strengthening & Maintenance
Halswell-Hornby-Riccarton CB / 6th May 2016



Heathcote Domain - Former Tennis Club Shed
Linwood-Central-Heathcote CB / 26 April 2016



Barrington Park - Cricket Club / Community Building
Spreydon-Cashmere CB / 22 April 2016



Barnett Park - Sumner/Redcliffs Crèche
Linwood-Central-Heathcote CB / 9 January 2016
(Decorative wall repairs completed 12 April 2016)



The Gaiety Hall – EQ Repair, Strengthening & Maintenance
Banks Peninsula CB / 1st April 2016



New Brighton Crèche
Coastal- Burwood CB / 28 March 2016



St Martins Opawa Toy Library
Spreydon-Cashmere CB / 14 March 2016



Tram Barn - Tramway Lane
Linwood-Central-Heathcote CB
Completed 11th November 2015- Roof repairs in March 2016



Lyttelton Recreation Centre and Trinity Hall Repair
Banks Peninsula CB / Completed 18th December 2015- Official Opening 20th February 2016



Lyttelton Recreation Ground – Pavilion and Shed #2
Banks Peninsula CB / 05 February 2016



Grubb Cottage – EQ Repair and Maintenance
Banks Peninsula CB / 2nd February 2016



Upper Riccarton Library
Halswell-Hornby-Riccarton CB
Phase 1 Completed 1st February 2016



North New Brighton Community Centre
Coastal- Burwood CB / 29 January 2016



Opened to Public 2015



Sumner Surf Club Toilets Rebuild
Linwood-Central-Heathcote CB / 11th December 2015



Victoria Park Information Centre – EQ Repair & Strengthening
Spreydon-Heathcote CB/ 15th December 2015



South Hagley netball toilets
Linwood-Central-Heathcote CB / 20th November 2015



Heathcote Domain Exeloo Toilet
Linwood-Central-Heathcote CB / 30th October 2015



Cashmere Valley Exeloo Toilets
Spreydon-Cashmere CB / 30th October 2015



Bexley Park Exeloo Toilet
Coastal- Burwood CB / 23rd October 2015



Linwood Resource Centre
Linwood-Central-Heathcote CB / 20th October 2015



Shirley Library EQ Repairs
Coastal- Burwood CB / 16 October 2015



Avebury Workshed & Toilets – EQ Repair and Strengthening
Linwood-Central-Heathcote CB / 13 October 2015



Akaroa Museum – EQ Repairs, Strengthening and Re-roof
Banks Peninsula CB / 13 October 2015



Papanui Library EQ Repairs
Papanui-Innes CB / 13 October 2015



Botanic Gardens Tea Kiosk - Strengthening & Repair Project
Linwood-Central-Heathcote CB / 02 October 2015



Le Bons Bay Exeloo Toilet
Banks Peninsula CB / 25th September 2015



Awa-iti Reserve Exeloo Toilet
Banks Peninsula CB / 20th September 2015



Dog Pound - Dog Shelter and Dwelling Portacom
Linwood-Central-Heathcote CB / 20th August 2015



Avon Park Exeloo Toilet
Linwood-Central-Heathcote CB / 17th August 2015



Duvuachelle Show Grounds Exeloo Toilet
Banks Peninsula CB / 12th August 2015



Sockburn Recreation Centre Strengthening and Repair
Halswell-Hornby-Riccarton CB / 7th August 2015



Bottle Lake Forest Information Centre
Coastal- Burwood CB / 31st July 2015



Duvauchelle Reserve and Campground - All Buildings
Banks Peninsula CB / 30th July 2015



Scarborough Beach - Jet Boat Shed
Linwood-Central-Heathcote CB / 21st July 2015



South New Brighton Park Exeloo Toilet
Coastal- Burwood CB / 10th July 2015



Middleton Park Public Toilet
Halswell-Hornby-Riccarton CB / 20th June 2015



Spreydon Library
Spreydon-Cashmere CB / 4th May 2015



Woolston Park Memorial to Fallen Soldiers and Pavilion Rebuild

Linwood-Central-Heathcote CB / Sports changing facilities- 8th June 2015, War Memorial Facility- 25th April 2015



Port Levy Pool Changing Shed

Banks Peninsula CB / 2nd April 2015



Cuthberts Green Softball Complex and Grandstand

Linwood-Central-Heathcote CB / 2nd April 2015



Withells Island Boat Sheds

Coastal- Burwood CB / 2nd April 2015



Edmonds Clock Tower – EQ Repairs & Strengthening- Heritage

Linwood-Central-Heathcote CB/ April 2015



Clare Park Pavilion and Changing sheds

Coastal- Burwood CB / 30th March 2015



Norman Kirk Pool Rebuild

Banks Peninsula CB / 12th February 2015



Hei Hei Community Centre – Repair & Strengthening

Halswell-Hornby-Riccarton CB / 28th January 2015



Cuthberts Green Pavilion EQ Repairs

Linwood-Central-Heathcote CB / 24th January 2015



Waltham Pool Rebuild

Linwood-Central-Heathcote CB / 17th January 2015



Cuthberts Green Softball Groundsmans Shed

Linwood-Central-Heathcote CB / 12th January 2015



Opened to Public 2014



Godley House – Foundation Remediation- Heritage

Banks Peninsula CB / December 2014



Scarborough Paddling Pool Rebuild

Linwood-Central-Heathcote CB / 20th December 2014



Yaldhurst Domain Toilet block strengthening

Fendalton-Waimairi-Harewood CB / November 2014



Waltham Park Pavilion Earthquake repair and Strengthening

Linwood-Central-Heathcote CB / October 2014



Avonhead Pavilion Earthquake repair and Strengthening

Fendalton-Waimairi-Harewood CB / October 2014



Victoria Clock (Jubilee) – EQ Repairs and Strengthening- Heritage

Linwood-Central-Heathcote CB / October 2014



Denton Oval - Amenities Below Grandstand
Halswell-Hornby-Riccarton CB / 22nd July 2014



Riccarton House – EQ Repairs and Strengthening-Heritage
Halswell-Hornby-Riccarton CB / May 2014



Jellie Park Recreation & Sports Centre - Main Plant Room Strengthening
Fendalton-Waimairi-Harewood CB / 31st January 2014

Opened to public before 2014



South Brighton Community Centre Transitional Facility
Coastal- Burwood CB / 8th November 2013



Linwood Community Arts Centre – EQ Repairs and Strengthening- Heritage
Linwood-Central-Heathcote CB / October 2013



Avebury House – EQ Repairs and Strengthening-Heritage
Linwood-Central-Heathcote CB / September 2013



Curators House – EQ Repairs and Strengthening
Linwood-Central-Heathcote CB / November 2012



YHA Rolleston House – EQ Repairs and Strengthening
Linwood-Central-Heathcote CB / November 2012



Beachcomber Restaurant – EQ Repairs
Linwood-Central-Heathcote CB / November 2012



Cowles Stadium Earthquake repair and Strengthening
Linwood-Central-Heathcote CB / October 2012

Demolitions Completed - Community Facilities



Sumner Carpark
Demolished Sep - 2017



Bishopdale Community Centre
Demolished Aug - 2017



South Brighton Motor Camp Coastal CB
Demolished Dec - 2016



Robbie's Bar & Bistro Riccarton
Halswell-Hornby-Riccarton CB
Demolished September 2016



QE2 sports house
Coastal- Burwood CB
Demolished March 2016



Porritt park, the main stadium
Coastal- Burwood CB
Demolished March 2016



Cathedral Square Toilets
Linwood-Central-Heathcote CB



Ex-Model Railway Site - Andrews Crescent
Spreydon-Cashmere CB
Demolished December - 2015



Hagley Park North - RSA Bowling-Petanque Club
Linwood-Central-Heathcote CB
Demolished December - 2015



Before



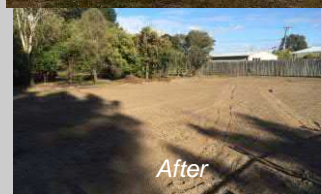
After

Linwood Nursery (Garage, Lunchroom, Potting Shed, Storage Shed, Soil Shelter, Glasshouses (x6), Cold Frames, Shrubbery Frame (x3), Shade House (x3), Portacom Office,

Linwood-Central-Heathcote CB
Demolished November - 2015



Before



After

Sea field park "the Lodge"

Coastal- Burwood CB
Demolished July - 2015



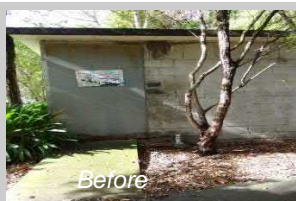
Before



After

North Beach Community Crèche

Coastal- Burwood CB
Demolished July - 2015



Before



After

Ferrymead reserve old toilets

Linwood-Central-Heathcote CB
Demolished June - 2015



Before



After

Styx River reserve shed number two

Fendalton-Waimairi-Harewood CB
Demolished June - 2015



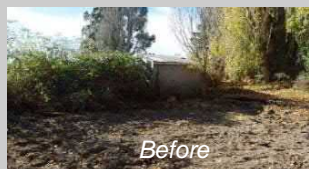
Before



After

Cashmere Reserve Toilet

Spreydon-Cashmere CB
Demolished May - 2015



Before



After

Styx River reserve living laboratory / dwelling and buildings

Fendalton-Waimairi-Harewood CB
Demolished May - 2015

No 'Before' photograph



After

Parklands Library Garage

Coastal- Burwood CB
Demolished May - 2015



Before



After

Westminster park buildings x 2

Papanui-Innes CB
Demolished April - 2015



Before



Before



Before



Avon park pavilion
Linwood-Central-Heathcote CB
Demolished April - 2015



Avon park toilet block
Linwood-Central-Heathcote CB
Demolished April - 2015



Birdsey Reserve Shed
Linwood-Central-Heathcote CB
Demolished March - 2015



Bexley Park Toilet block
Coastal- Burwood CB
Demolished March - 2015



Scott Park
Linwood-Central-Heathcote CB
Demolished Dec - 2014



Bromley Cemetery - Shed
Linwood-Central-Heathcote CB
Demolished Dec - 2014

Active Projects- Community Facilities

Jellie Park Recreation and Sports Centre

Fendalton-Waimairi-Harewood Community Board

Tranche 2

Workstream Rec & Sport

Opening	EQ repair works and enhancements to be delivered in Stages over the next 3 years with Stage 2 almost complete and Stage 3 underway	Current Phase /Sub-Phase	Executing Construction
Delegated Authority for concept Approval	Christchurch City Council - Recreation & Sport Unit Internal staff building custodian		

Description of Work

Jellie Park and Pioneer Recreation & Sport Centres have been combined into one project in order to allow for project cost and operational efficiencies. In addition, combining the two projects will enable Council to maximise the opening hours for both sites during repairs and construction.

Both Jellie and Pioneer have experienced significant earthquake damage that may begin to affect the operation and longevity of the facility if not repaired over the next 2-3 years. A scope for repairs includes earthquake repairs, energy efficiency renewals, building system renewals and accessibility improvements for the facility. A phased shutdown of these facilities is underway in coordination with the work at Pioneer in order to minimise disruption to the levels of service, i.e. work on indoor pools is likely to be carried out while the outdoor pools are open (where possible).

Current Status

Stage 2 is almost concluded with the successful opening of the spa, sauna and steam rooms for public use on 13/04/2018.

The dismantling of the indoor hydroslide and placement of new foundations is complete. A base slab for the indoor hydroslide run out has been poured and work is progressing in the surrounding sump area. Structural steel to plant room is complete and panel installation is progressing.

Stage 3 deliveries include: Installation of the new indoor hydroslide, strengthening of the outdoor hydroslide, enhancement and upgrade to the outdoor pool/area, reception foyer, change rooms and fitness centre.

Delivery of indoor hydroslide parts from Canada are expected on 17/05/2018 and the steel structure will follow around the second week of June. Investigative works for Stage 3 outdoor scope has started.

Communication for the works are located at: <https://www.ccc.govt.nz/rec-and-sport/rec-and-sport-centres/recandsportrepairs/>



New foundations for the indoor hydroslide



Spa, sauna and steam room open to public

Opawa Public Library Earthquake Repairs

Linwood-Central-Heathcote Community Board

Tranche 2

Community Facilities

Opening	Q3 2019	Current Phase / Sub-Phase	Initiate Scoping
Delegated Authority for concept Approval	Christchurch City Council – Community Support Unit Internal staff building custodian & Linwood-Central-Heathcote Community Board		

Description of Work

This building was closed after the 2011 earthquakes and is classified as an EQ prone building with heritage values. The project originally aimed to repair and strengthen the building to its previous use. The cost to do this was significantly above the budget available. In consultation with stakeholders, it was decided to change the scope to demolish and rebuild the Opawa Library instead of repairing the earthquake damaged structure and that the new building support the functions of both the volunteer library and the children's library onto one site at 151 Opawa Road within (or as close to) the available budget.

Current Status

A Joint Working Group comprised of members of the Opawa Volunteer Library, Opawa Children's Library, Community Board members, and Council staff are working to develop a Design Brief that will become the basis for a Request for Proposal going out to the market seeking Design/ Build contractors to deliver the new building.



Existing front entrance

Pioneer Stadium & Pools Complex - Pools, Squash, Sports Hall

Spreydon-Cashmere Community Board

Tranche 2

Workstream Rec & Sport

Opening	EQ repair works and enhancements to be delivered in Stages over the next 3 years with Stage 2 almost complete and Stage 3 underway	Current Phase / Sub-Phase	Executing Construction
Delegated Authority for concept Approval	Christchurch City Council - Recreation & Sport Unit Internal staff building custodian		

Description of Work

Pioneer and Jellie Park Recreation & Sport Centres have been combined into one project in order to allow for project cost and operational efficiencies. In addition, combining the two projects will enable Council to maximise the opening hours for both sites during repairs and construction.

Pioneer Recreation & Sport Centre has earthquake damage throughout the building which needs to be addressed. Earthquake repairs will be combined with planned maintenance work & renewals and completed within the project. The phasing of work is being coordinated with Jellie Park Sport & Recreation Centre to ensure activities can be transferred to other facilities where possible. Due to the limited stock of gymnasium space in the City, Pioneer Stadium works (with the exception of urgent maintenance upgrades) will be deferred until after the opening of Metro Sports.

Current Status

Stage 2 included repairing, upgrading and enhancement to the pool hall, 25m pool, leisure pool, spa, steam room, sauna, change rooms and toilets and these were successfully completed and opened for public use on 09/05/2018.

Stage 3 (which is about to start) will comprise upgrading and enhancement works for the Learn to Swim Pool and Spin Studio and will also include roof leaks repair works (involving roof overlay, replacing parapet capping and wall flashing).

Communication for the works are located at: <https://www.ccc.govt.nz/rec-and-sport/rec-and-sport-centres/recandsportrepairs/>



Pool hall ready for opening on 08/05/2018

Riccarton Community Centre- New Build

Halswell-Hornby-Riccarton Community Board

Tranche 1

Community Facilities

Opening	Q4 2019	Current Phase /Sub-Phase	Executing Detailed design
Delegated Authority for concept Approval	Christchurch City Council – Community Support Unit Internal staff building custodian		

Description of Work

This project will build a new community facility to replace the Riccarton Community House. The facility will be built in the Northern portion of land owned by Council with the sale of land to the South providing the majority of project funding. A revised schematic was signed off by the Community Board in September 2017.

Current Status

The project team has now completed Developed Design and an internal stakeholder review session will be held on 14 May to provide feedback to be incorporated into the Detailed Design as appropriate.

Some of the key improvements in the Developed Design include an increased ceiling height in the Hall, additional storage areas and wider toilets for improved accessibility.

An application for Resource Consent was lodged early May and is currently being processed.



Artists render of the working design

St Albans Creche
Papanui-Innes Community Board
Workstream Community Facilities

Opening	Q3 2018	Current Phase / Sub-Phase	Executing Construction
Delegated Authority for concept Approval	Christchurch City Council – Community Support Unit Internal staff building custodian		

Description of Work

This project is the completion of work to re-level the building and repair earthquake damage that commenced in December 2014. The initial work was stopped when major structural rotting was discovered in the walls and floors. The cost to carry out repairs was deemed to be too much for the budget at the time. A building consent is required to carry out the repairs. This would invoke a fire and accessibility report which again work require more funding.

In September 2015 the project was re-started and funding allocated. The concept for the repair is to remove the outside cladding up to 1.5m up the walls and replace studs and floor joists that require it. A fire and Accessibility report will be produced and any required work resulting from the reports will be carried out.

Current Status

The outside new plastering is complete as is the floor levelling and wall reconstruction inside. All rotten timber has been replaced and lathe & plaster walls replaced with standard gib. All external walls and under floor have been insulated. Decorating is under way and a new kitchen is partially installed.



Exterior cladding



Partially-fitted kitchen

St Albans Park - Pavilion/Toilets

Papanui-Innes Community Board

Workstream Parks

Opening	August 2018	Current Phase / Sub-Phase	Executing Construction
Delegated Authority for concept Approval	Christchurch City Council – Parks Unit Internal staff building custodian and St Albans/ Pap-Inn Community Board		

Description of Work

St Albans Park Pavilion / Toilet is a 1 storey reinforced concrete block building which has suffered earthquake damage that makes necessary foundation relevening to repair. Repairing the building is not a viable option financially or functionally. Demolition/Re-Build has been determined the best course of action. Funding has been made available for the FY18.

Current Status

The building is progressing well. Framing is in place with the roof planned for 18th May. Delayed slightly at the beginning by consenting issues but the contractor is confident of making that time up to allow completion as per the original program.



St Albans Pavilion/Toilets – 10th May 2018

Spencer Park Campground - All Buildings

Coastal- Burwood Community Board

Tranche 2

Workstream Rec & Sports

Opening	Q3 2018	Current Phase / Sub-Phase	Executing Construction
Delegated Authority for concept Approval	Christchurch City Council – Recreation & Sport Unit Internal staff building custodian		

Description of Work

Phase 1 - completed on 10th June 2016 and included repairs to driveways, paving, ramps and parking areas.
Phase 2 - new amenities buildings: Code Compliance for the buildings were received 22 December 2017.
Phase 3 – All existing building on site are to be scoped and priced for upgrades. The focus is to update the whole complex.

Current Status

Phase 3 is under way with a contract being awarded at the end of April. The work to repair 7 different building blocks has been split into 3 stages:

- Stage 1 - main office, workshops and lodge
- Stage 2 - Amenities strengthening and cabins repair
- Stage 3 - Tourist Flats and Octagon repairs

Health & Safety plans and consents are being produced by the contractor. Work has started on the removal of trees to erect a new vehicle shed.



Spencer Park Main Office (before refurbishment)

Woolston Community Facility- New Build

Linwood-Central-Heathcote Community Board

Tranche 2

Community Facilities

Opening	July 2018	Current Phase / Sub-Phase	Executing Construction
Delegated Authority for concept Approval	Linwood-Central-Heathcote Community Board		

Description of Work

Replace the Woolston Community Library facility which was destroyed in the earthquakes – on the existing site 689 Ferry Road. The new building not only contains space for the volunteer library but also a public toilet, a (hireable) small meeting room, a (hireable) community hall, a small kitchen with servery into the hall, a parents room, two toilets, one of which has an accessible shower.

Current Status

The brickwork has been completed and the scaffolding has been removed.

All external doors and windows have been installed.

The first fix of services is well under way; some of which are completed.

The drainage was started week beginning 7th May, and the following week the roof flashings will be completed and the interior lining started. The landscaping will begin once the drainage is completed.

The Building Consent Amendment for the car park and laneway upgrade has been approved and work will start on the laneway when the landscaping of the courtyard is underway.

The project is on track to complete the building in July.



View from the other side of Ferry Road on 08/05/2018 when the scaffolding was being removed

Active Projects- Heritage

Akaroa Service Centre

Banks Peninsula Community Board

Tranche 1

Heritage

Opening	June 2018	Current Phase / Sub-Phase	Executing Construction
Delegated Authority for concept Approval	Christchurch City Council – Internal staff building custodian		

Description of Work

The Akaroa Service Centre currently has a 67%NBS but remains closed. This is as a result of earthquake damage and a desire to undertake alterations. Proposed works involve a new layout to the ground floor, upgrading data and heating, re-opening the balcony on the north east corner of the first floor and any upgrades necessary to comply with the building code including the installation of a new accessible toilet and ramp.

Current Status

Stage 1 - Exterior. All works have been completed with only minor touch ups still required and the painting of the picket fence.



The contractor has commenced on site as at the 28th of August 2017. All structural, HVAC, fire, data, and lighting upgrades are complete. Building is in final phases of fit-off and decorating prior to lodging for code of compliance.

Edmonds Poplar Crescent Pavilion

Linwood-Central-Heathcote Community Board

Tranche 2

Heritage

Opening	Q3 2018	Current Phase / Sub-Phase	Executing Construction
Delegated Authority for concept Approval	Christchurch City Council –Internal staff building custodian		

Description of Work

Edmonds Poplar Crescent Pavilion currently has a 19% NBS and will be strengthened to 67%.

The works will predominantly focus around the foundation, entrance steps and at window sill level as these are areas of critical weakness to this structure.

Current Status

Works have commenced and items from the Edmonds Band Rotunda which have been stored on site since the earthquakes have now been removed. The original steps have been removed and new strengthened foundation works have been completed to all elevations. The internal piers and drag tie beams have been completed. The repair to the wrought iron work to the window grilles, exterior concrete wall, roof membrane and electrical rough-in have all been completed.

The location and cutting out of rusted reinforcing to the concrete windows is currently underway.



Nurses Memorial Chapel

Linwood-Central-Heathcote Community Board

Tranche 2

Heritage

Opening	August 2018	Current Phase / Sub-Phase	Executing Construction
Delegated Authority for concept Approval	Christchurch City Council –Internal staff building custodian		

Description of Work

Undertake EQ damage repairs and strengthen the building within the range of 50 to 67% NBS. This strengthening scheme is based around the need to conserve the interior features and fabric.

Current Status

The work to the basement area is now completed. All deconstruction to the Chapel has been completed and the new structural elements, buttress columns ring beam dormer beams have been completed with the installation of reinforced concrete. New block work walls have been installed to the Vestry and both the Chancel and Nave arches are approximately 50% finished. The new slab to the Nave has received the reinforcing and is about to be poured.

On the completion of the Nave and Chancel arches, the sarking to the roof is to be installed together with the ply diaphragm roof ready for the slate tiles to be installed. The exterior and interior of the arches will then be re-clad. Interior works will start on the reinstatement of the timber paneling.



Installation of the reinforcing to the Buttress columns and the perimeter ring beam.



Chancel arch ready to receive the second pour of concrete.

Penfolds Cob Cottage
Linwood-Central-Heathcote Community Board
Tranche 2
Heritage

Opening	TBA	Current Phase / Sub-Phase	Planning Investigation
Delegated Authority for concept Approval	Asset Owner		

Description of Work

Undertake Option 1 to stabilise and repair in current damaged state, and interpretation works to James Penfold's c 1870 cottage near Ferrymead Bridge. The road frontage wall will be strengthened with interior steel frame supporting roof and walls. The rear of the cottage will have toughened glass panels outside of the line of the original walls, glass will be secured with steel columns allowing visitors to view construction, repairs and how the building was affected by the earthquakes.

Current Status

In April Council resolved to take the project off hold, with funding made available in FY18/19. The detailed design and consenting process will commence late June 2018.



Option 1 Glass Interpretation



Previous condition



Current worksite

Risingholme Community Centre & Homestead

Linwood-Central-Heathcote Community Board

Tranche 1

Heritage

Opening	Q1 2019	Current Phase / Sub-Phase	Executing Construction
Delegated Authority for concept Approval	Christchurch City Council –Internal staff building custodian		

Description of Work

Works to remediate the asset include the removal of all lathe and plaster ceilings as well as designated lathe and plaster walls, reconstruction of the chimneys as brick veneers around steel frames, the installation of roof and wall diaphragms, introduction of ceiling diaphragms on both the ground & first floor and the repair of the remaining lathe & plaster walls. Foundation works may also be required.

Current Status

Work has now started on the Homestead with the removal of the remaining burnt timber elements. The new framing to the first floor internal and external walls has been completed and the first Trusses are being installed onto the roof. The Gable and Dormer ends are currently being rebuilt and will be installed when the trusses have been completed.

Work to the new foundations for the chimneys has been completed with the installation of the new concrete. All timber framing for the ground floor interior has been completed. A pre-wire for the electrical works is underway and the initial installation of the main sprinkler pipes has been completed. Some of the original building fabric is in need of remediation due to rot within the timber, this is currently being assessed prior to replacement of these areas.



First floor framing



New replacement floor joists to the Ground Floor



New Trusses being install

Risingholme Hall
Linwood-Central-Heathcote Community Board
Tranche 1
Heritage

Opening	Q4 2018	Current Phase / Sub-Phase	Executing Procurement
Delegated Authority for concept Approval	Christchurch City Council –Internal staff building custodian		

Description of Work

The Risingholme Hall currently has a 13%NBS and is closed.

Works to remediate this asset will include removal of the external weatherboards in order to gain access to the damaged foundations. The damaged portions of the foundations will be removed and new foundation material used to replace and support the existing building, reinstate timber framed wall and weatherboards including painting. A palisade wall to assist with the land remediation between the building and stream is required and has been designed.

Current Status

The construction contract has now been approved and has been issued to the Main Contractor for signing. Establishment of the contractor on site will be the end of May with the installation of fencing and the H&S briefing for the project. Alternative options are now being considered for the installation of the land remediation piers due to the positioning of the tree to the rear of the site.



Risingholme Hall

Rose Historic Chapel
Linwood-Central-Heathcote Community Board
Tranche 1
Heritage

Opening	2018-Q3	Current Phase / Sub-Phase	Closing
Delegated Authority for concept Approval	Christchurch City Council –Internal staff building custodian		

Description of Work

Works to remediate the asset include strengthening of the walls and inner ties, improvement of the foundations and tying of the roof structure.

Current Status

All construction work to the Chapel has now been completed and a practical completion inspection was undertaken with the main contractor. Minor remedial items are now being completed and this will be finished by the end of May. All producer statements have now been received and an application has been made for a Code of Compliance Certificate. The defect liability period of twelve months has now started.

Planning is underway with Rose Chapel Trust, for the proposed opening celebrations in late July.





Rose Historic Chapel

Projects On Hold or Removed from Programme

Asset Name	Status	Community Board	Target Start Date
Parklands Library - Community Facilities Completed Stage 1 Repair of storm & sanitary services and Stage 2 Landscaping. Stage 3: Earthquake repairs to start in 2019 due to the need to fit this work in with the whole Christchurch City Libraries Programme. Consequently, the project will not be reported upon further until the project recommences in July 2018.	On Hold	Coastal- Burwood	1 July -2018
Centennial Hall - Spreydon Community Centre - Community Facilities On hold while community consultation takes place on future-use of the facility.	On Hold	Spreydon-Cashmere	TBC
Cathedral Square Toilets – Community Facilities This budget is being held in future years for the following reasons: There is too much uncertainty around what the Cathedral Square Anchor Project will be and where/how many public toilets will be required.	On Hold	Central-Heathcote-Linwood	1 July 2019
St Albans Community Centre – Community Facilities Project On Hold awaiting LTP submission outcome with regard to funding for the purchase of property at 130 Caledonian Rd.	On Hold	Papanui-Innes	01 Jul 2018
Shirley Community Centre- Community Facilities The capital budget for this project was removed from the Long Term Plan and the project will not proceed unless the LTP public consultation process deems differently.	Removed from Programme	Papanui-Innes	N/A
Cracroft Caverns Reserve - Cashmere Caverns- Community Facilities The capital budget for this project was removed from the Long Term Plan and the project will not proceed unless the LTP public consultation process deems differently.	Removed from Programme	Spreydon-Cashmere	N/A
Linwood Library – Community Facilities The capital funding has been removed from the Long Term Plan. The Linwood Library continues to operate out of Eastgate Mall while services for the area previously occupied by Linwood Library continue to be reviewed.	Removed from Programme	Central-Heathcote-Linwood	N/A
Former Council Stables – Donald St- Heritage Awaiting Asset Owner direction. Budget has been moved out to FY20/21.	On Hold	Banks Peninsula	01 July 2019
Kukupu Hostel - Heritage CCC are currently looking into the future use of the building as this will determine the design process for the repair and strengthening of the property. This asset is currently on hold awaiting a decision on future use. Budget has been moved out to FY19/20.	On Hold	Banks Peninsula	01 Jul 2018
Little River (Coronation) Library- Heritage The area traditionally suffers from flooding and as this building is affected, we are currently looking at potential solutions for this facility. A report has been completed and issued to Council for review and comment. The flooding report has several different options for the protection of the property and this is currently being expanded and initial budget estimate figures completed for further review. Budget has been moved out to FY21/22	On Hold	Banks Peninsula	01 July 2020
Kapuatohe Dwelling- Heritage This project has been re-phased, as part of the Annual Plan, meaning funding will be available 19 / 20. Consequently, the project will not be reported upon further until the project recommences.	On Hold	Fendalton-Waimairi-Harewood	1 July 2018
Chokebore Lodge – Heritage Council approved on 5 October 2017 - Asset repair be put on hold until future use is determined.	On Hold	Halswell-Hornby-Riccarton	TBC
Mona Vale Bathhouse – Heritage Council approved on 5 October 2017 - Asset repair be put on hold until future use is determined	On Hold	Halswell-Hornby-Riccarton CB	TBC

Assets from Tranche 2 requiring no further action or awaiting long term decision- Community Facilities

Milton St Depot - #3 Shed- demolition Linwood-Central-Heathcote CB		<p>Asset Owner does not wish to proceed with any demolition work while they consider the future use of this site. There are a number of issues i.e. the lease, ownership transfer/redevelopment or not, and therefore the built assets. The strategies for this are currently a topic of discussion, but at this stage it is too early to anticipate what that outcome may be.</p>
Pages Road Depot - Buildings Linwood-Central-Heathcote CB		<p>Project has been cancelled as it has been discovered that the property is owned by Water and Waste who no longer have a need for it. Presently used for the storage of Heritage items which will define when the facility will be demolished.</p>