

Waikura/Linwood-Central-Heathcote

# Community Board Plan 2020–22

---







# Contents

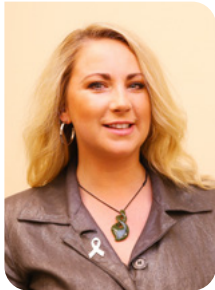
---

From the chair	1
About local community boards and our plans	1
Christchurch City Council's Strategic Framework	2
Waikura/Linwood-Central-Heathcote Board area	3
What our community has told us	5
Our vision	6
Our priorities	7
Community board funding	13
Your local community board members	15



# From the Chair

---



## Tēnā koutou katoa,

On behalf of the Waikura/Linwood-Central-Heathcote Community Board, I am proud to present our 2020–2022 Community Board Plan.

Community board plans are an important document that provide boards a focus for work in the community board area over the next

few years. The community board will naturally continue to deal with issues that come to their attention, but the board plan helps the board to prioritise key outcomes they wish to see included in the council work programme and go further, faster or achieve a greater impact.

The board is fully cognisant of the magnitude and complexities around the economic and social implications that lie ahead for our city arising from the COVID-19 global pandemic, and the priorities listed in this plan, reflect the issues that residents, community groups and Christchurch City Council staff have brought to our attention.

The community board plan will also guide:

- Advocacy on matters of importance to our community board area
- Board decisions on local activities, projects, facilities and funding
- our input into development of policies and strategies
- how we work with other agencies that play a key role in our area, including community groups, central government agencies and other council units

I would like to thank everyone who gave feedback to inform this plan. As your elected representatives, it is vital that we engage with our local residents, community groups and businesses to ensure we are advocating for the things that are important to you.

Your community board members are available as your first point of contact for any issues you feel require council attention.

**Alexandra Davids, Chair**

---

## About local community boards and our plans

Community boards were created by the local government reforms in 1989.

Approximately 110 community boards now operate in both urban and rural areas within local authorities throughout New Zealand. They carry out functions and exercise powers delegated to them by their councils.

There are seven community boards within the Christchurch City Council area.

Local body elections for community board members and councillors are held every three years.

### The community board's main role is to:

- Represent and advocate for the interests of its community.
- Consider and report on all matters referred to it by the council, or any matter of interest to the board.
- Maintain an overview of council services in the community.
- Prepare an annual submission to the council for expenditure within the community.
- Communicate with community organisations and special interest groups within the community.

### Community board plans

Community board plans are developed every three years and outline the board's key priorities for their elected term. They also indicate how the board will work in partnership with the local community to achieve the council's community outcomes.

A key part of the development of the plan is engagement with the local community and key stakeholders to ensure that the board's priorities reflect the needs and desires of local residents, community groups and businesses in our board area.

# Developing Resilience in the 21st Century

Strategic Framework



Whiria ngā whenu o ngā papa,  
honoa ki te maurua tāukiuki

Bind together the strands of each mat and join  
together with the seams of respect and reciprocity

## Ōtautahi–Christchurch is a city of opportunity for all

Open to new ideas, new people and new ways of doing things – a city where anything is possible

### Principles

Being open,  
transparent and  
democratically  
accountable

Promoting  
equity, valuing  
diversity and  
fostering inclusion

Taking an inter-generational approach  
to sustainable development,  
prioritising the social, economic  
and cultural wellbeing of  
people and communities  
and the quality of the  
environment, now  
and into the  
future

Building on the  
relationship with  
Te Rūnanga o Ngāi Tahu  
and the Te Hononga–Council  
Papatipu Rūnanga partnership,  
reflecting mutual understanding  
and respect

Actively collaborating and  
co-operating with other  
local, regional  
and national  
organisations

Ensuring  
the diversity  
and interests of  
our communities  
across the city and the  
district are reflected in  
decision-making

### Community Outcomes

#### Resilient communities

Strong sense of community  
Active participation in civic life  
Safe and healthy communities  
Celebration of our identity  
through arts, culture, heritage,  
sport and recreation  
Valuing the voices of all cultures  
and ages (including children)

#### Liveable city

Vibrant and thriving city centre  
Sustainable suburban and  
rural centres  
A well connected and accessible  
city promoting active and  
public transport  
Sufficient supply of, and  
access to, a range of housing  
21st century garden city  
we are proud to live in

#### Healthy environment

Healthy water bodies  
High quality drinking water  
Unique landscapes and  
indigenous biodiversity are  
valued and stewardship  
exercised  
Sustainable use of resources  
and minimising waste

#### Prosperous economy

Great place for people, business  
and investment  
An inclusive, equitable economy  
with broad-based prosperity  
for all  
A productive, adaptive and  
resilient economic base  
Modern and robust city  
infrastructure and community  
facilities

### Strategic Priorities

Enabling active  
and connected  
communities  
to own their future

Meeting the challenge  
of climate change  
through every means  
available

Ensuring a high quality  
drinking water supply  
that is safe and  
sustainable

Accelerating the  
momentum  
the city needs

Ensuring rates are  
affordable and  
sustainable

### Ensuring we get core business done while delivering on our Strategic Priorities and achieving our Community Outcomes

Engagement with  
the community and  
partners

Strategies, Plans and  
Partnerships

Long Term Plan  
and Annual Plan

Our service delivery  
approach

Monitoring and  
reporting on our  
progress

# Waikura/Linwood-Central-Heathcote Board area

The geographic boundaries for the Waikura/Linwood-Central-Heathcote Community Board are:

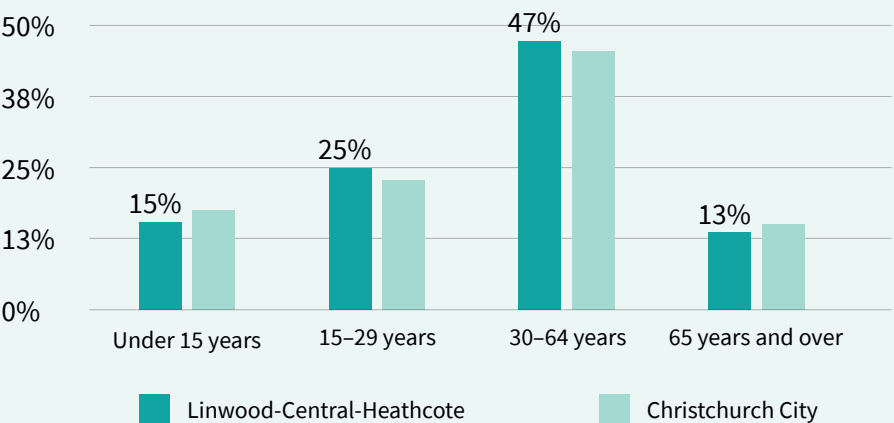
- **North** - the Avon River up to Bealey Avenue, along Papanui Road up to Holly Road that becomes Canon Street, at Geraldine Street it goes up to Edgeware Road and then down onto Hills Road, along North Avon Road, up to North Parade and then Dudley Creek, the Avon River onto Avonside Drive, Bickerton Street down to Shuttle Drive;
- **East** - the Estuary of the Heathcote and Avon Rivers and the Pacific Ocean;
- **South** - Lyttelton Harbour, Gollans Bay and the Port Hills; and
- **West** - Rapaki Road, the Heathcote River, Tennyson Street and Strickland Street.

## Demographic summary (2018 census data)

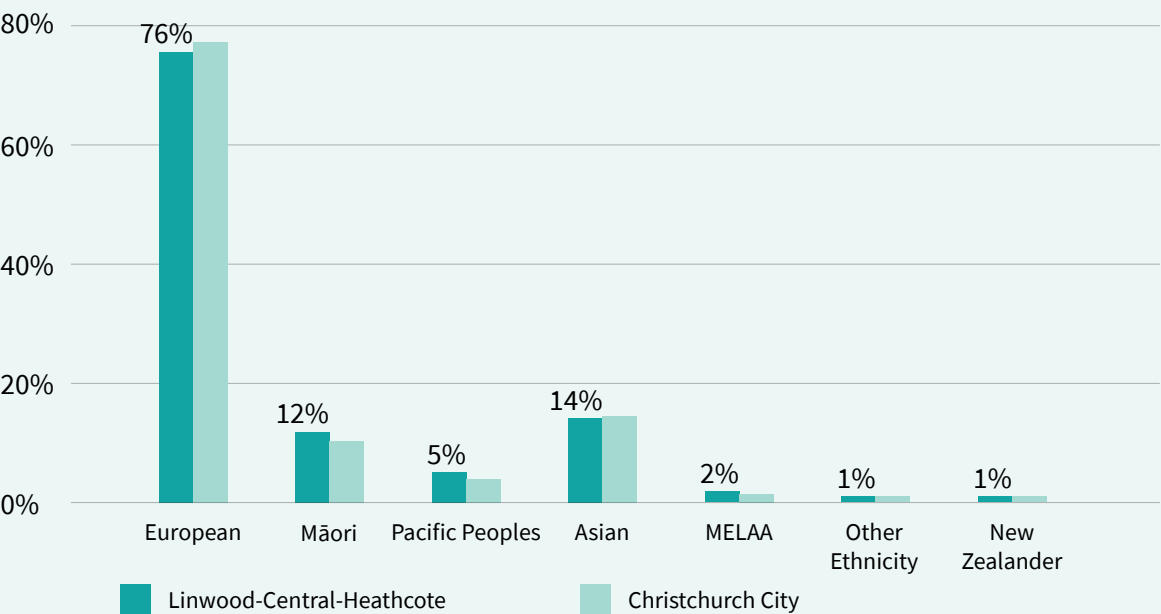
### Population

The population within the geographic boundary is:  
**73,443**

### Age

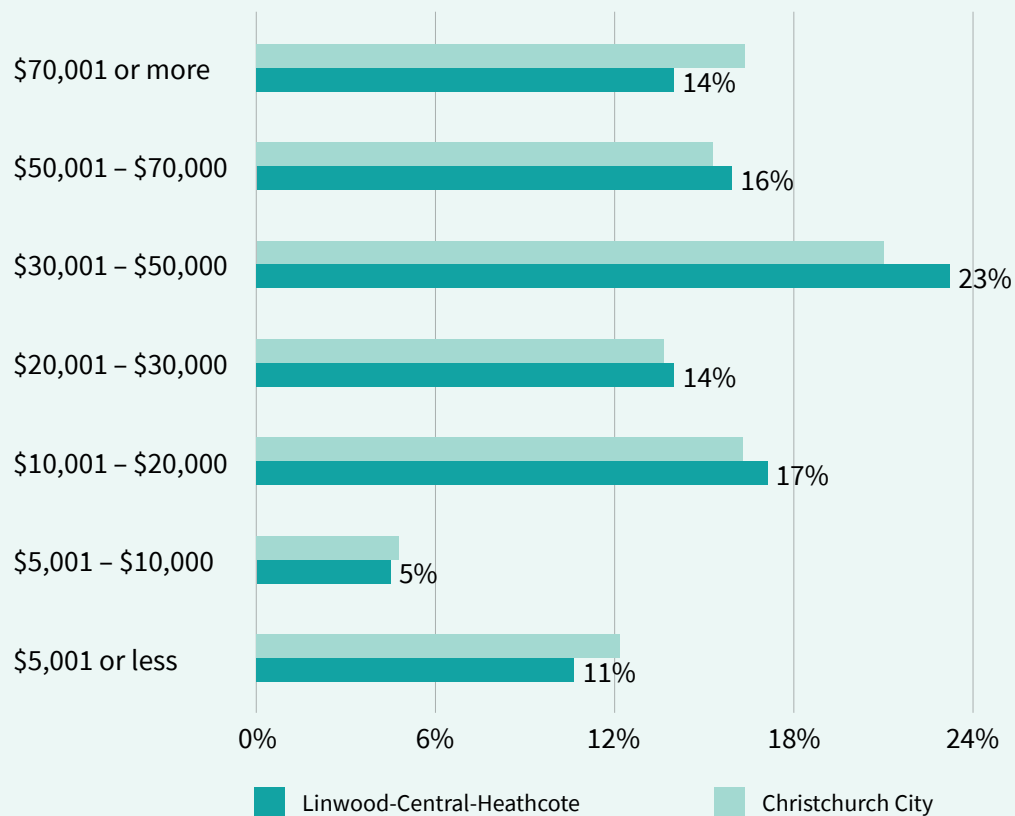


### Ethnicity





## Personal Income



## Facilities and Amenities

- Three council libraries: Linwood, Tūranga and Matuku Takotako – Sumner Library.
- Two marae: Rehua Marae on Springfield Road and Nga Hau e Whā on the border with Coastal-Burwood Board.
- Two council service centres: Civic Offices in Central Christchurch and Linwood at Eastgate Mall.
- Seven major shopping centres: Central City shopping precinct, South City Mall, The Colombo, Eastgate Shopping Centre, The Tannery, Ferrymead shops, Sumner shops.
- 34 schools: 21 primary, 7 secondary, 3 composite year 1–13, 2 special, 1 teen parent
- Two public hospitals: Christchurch and Christchurch Women's Hospitals.

- Multiple major sport and recreation amenities: Hagley Park and Oval, Botanic Gardens, Victoria Square, Cathedral Square, Margaret Mahy Family Playground, Washington Way Skate Park, Godley Head, The Gondola, Cowles Stadium, Waltham Summer Pool, Southern Beaches.

## Dwellings

- Unoccupied private dwellings - 3,495
- Occupied dwellings - 30,507
- Dwellings under construction - 528
- Non-private dwellings - 177

# What our community has told us

---

The Waikura/Linwood-Central-Heathcote Community Board regularly engages with residents and community groups to maintain understanding of local aspirations and community activities. It does this by encouraging Forum and Deputation participation at community board meetings, liaison with resident and interest groups, and attendance at community events. These engagements have informed the development of the community board plan priorities.

Feedback on the Waikura/Linwood-Central-Heathcote proposed priorities was gathered from face to face and online Have Your Say submissions. Whilst only one of the submission did not support the priorities, over half had some concerns, and a range of additions to priorities were also offered for consideration: many of these comments were about applying priorities to more locations, or suggesting specific alternatives.

Some common themes in the feedback commentary included:

- Attention to the protection and maintenance of the biodiversity and recreational opportunities the Port Hills, Ōtākaro Avon and Ōpāwaho Heathcote River corridors offer
- The importance of community wellbeing
- The ongoing need to improve local infrastructure such as roads and footpaths



*Specific comment included:*

---



**It's great to see that community engagement is important to the board and that community satisfaction is a measure of success.**

**Repairing roads and footpaths in this area should be a priority.**

**Green spaces provide places for people dwelling in housing with little or no outside space to go and interact with their whanau and their community.**

**Reunite the people and the river.**





# Our vision

The Waikura/Linwood-Central-Heathcote Community Board has identified a number of priorities for the 2019-2022 term. We welcome the opportunity to work in partnership with council to progress these priorities to benefit the Linwood-Central-Heathcote communities



# Our priorities

---

## Community wellbeing is supported and improved

### Why this matters:

- Well-connected neighbourhoods and communities improve wellbeing.
- The local environment, such as general tidiness, trees and green spaces strongly impacts our wellbeing.
- Bumping places, both formal and informal, increase wellbeing.
- Connected communities are more resilient.

### What the board will do:

- Listen and respond to local concerns about community wellbeing.
- Directly sponsor collaborative local projects that improve the wellbeing of specific locations or groups in the board area.
- Support funding applications that maximise outcomes and reduce duplication.
- Provide strengthening communities funding to local groups whose work achieves wellbeing outcomes.
- Support capacity building within communities wishing to grow community wellbeing.
- Continue to advocate for 'community wellbeing' appropriate to urban design and planning – including housing (kāinga ora and social housing).
- Advocate for the continuation of a Phillipstown Community Hub.

### We will measure our success by:

- Lancaster Park is developed alongside the community.
- Social and recreational activities are provided in the board area that reflect the diversity of local residents and build community wellbeing.
- Strengthening Communities funding supports a diversity of community wellbeing initiatives.
- Residents feel safer and have pride in their neighbourhoods.
- An increase in youth and diverse communities' engagement with council and community board.
- Action is taken to support the continuation of the Phillipstown Hub.

### Community Outcomes:

Resilient Communities ✓

## Resolving the flooding problem at Moa Reserve

### Why this matters:

- Small parks/green spaces are important in higher density residential areas.
- The reserve is well used by residents, students and workers from surrounding businesses and institutions.
- Much of Moa Park is unusable due to the emergence of springs following the quakes, which is exacerbated following rain when it floods.
- There is no budget to resolve the issue in the current 2018–2028 Long Term Plan, so it needs to be sought from the 2021–2031 Budget.

### What the board will do:

- Advocate this matter to become a priority issue for council.
- Advocate for the funding to resolve the issues from the annual plan or next 2021–2031 Long Term Plan.
- Advocate for development contributions to assist pay for this work.

### We will measure our success by:

- Moa Park no longer floods following wet weather events.

### Community Outcomes:

Resilient Communities ✓ Liveable City ✓

---

## Raising the priority of footpath provision, maintenance and renewal

### Why this matters:

- Broken and damaged footpaths exclude from their use those with mobility issues, such as older or younger people unsteady on their feet, wheelchairs and pushchairs.
- To encourage people to walk, both for health and to reduce reliance on motor vehicles.
- Community safety is affected by a lack of accessible pathways.
- Safe pathways connect communities.

### What the board will do:

- Develop an understanding of the priorities for footpath provision, maintenance and renewal in the community board area.





- Advocate for the use of development contributions for provision, maintenance and renewal of footpaths in brown-fields development areas.
- Advocate for the provision, maintenance and renewal of footpaths in response to community concern.
- Seek a discretionary amount of footpath provision, maintenance and renewal funding for response to the community.
- Advocate for bringing forward the completion of the Coastal Pathway.

#### We will measure our success by:

- Footpath access in the community board area is improved.
- Synergies between footpath and roading projects are achieved.
- Pathways close by to higher need residential areas are well maintained and accessible.
- The remainder of the Coastal Pathway is completed.
- More school children walk, bike or scooter to school or their activities.

#### Community Outcomes:

Resilient Communities ✓ Liveable City ✓

### Greening the inner city east – Greening the concrete jungle

#### Why this matters:

- Trees and green space enhance wellbeing.
- Street tree canopy within the city is decreasing and this pilot project offers the opportunity of increasing the tree canopy in an area that is strongly affected.
- The Inner City East is a high density low socio-economic area and public greenspaces provide space for tree planting and social connection.
- The area is a brown-fields development area and is currently experiencing significant re-building and intensification of housing; thus, reducing private greenspace. There may be opportunity for land purchase before the re-build is complete.

#### What the board will do:

- Work with staff and the community to identify suitable locations and carry out street planting on berms and traffic islands.
- Activate the Greening the East Working Party to develop a spatial plan for the area, ensuring it builds on previous work done by Council.

- Advocate for funds from the 2021–2031 Long Term Plan for this to be a pilot project. Funds would be used for development of the spatial plan, capital and operational work and land purchase.
- Provide seed funding for plan development from the Waikura/Linwood-Central-Heathcote Discretionary Response Fund.
- Create better corridors for better access to parks and greenspace.
- Advocate for council land purchase where relevant.
- Advocate for the use of development contributions for work on this project.

#### We will measure our success by:

- Street planting occurs quickly where possible.
- The street tree canopy is increased in the Inner City East.
- Funds are secured in the 2021 – 2031 Long Term Plan.
- The spatial plan is developed.
- The community is involved in planting, and activation of green space.
- Land is purchased where necessary.

#### Community Outcomes:

Resilient Communities ✓ Liveable City ✓

---

### Improving Bromley's Roads, parks and infrastructure

#### Why this matters:

- Light industry has increased in the Bromley area, leading to an increase in heavy transport and buses using the residential streets as through ways; further impacting on the amenity of the area and wellbeing of local residents.
- Traffic speed creates irritation and hazards for local residents.
- Bromley was badly affected by the earthquakes, the land is fragile, which creates greater impacts from heavy and speeding traffic on surrounding residences.
- Parks and roads maintenance levels of service were lowered during the recovery phase and this has exacerbated the impact of damage in Bromley.
- Residents have met with the board and shared their concerns about the issues.

#### What the board will do:

- Advocate for the development of an implementation plan for the Bromley area, including speed reduction, enhanced monitoring and quality control, street planting and visual appeal.
- Advocate for an increase in maintenance to pre-quake levels.
- Encourage citizen participation in decision making and practical projects.
- Advocate for changes to the District Plan in alignment with the project.

#### We will measure our success by:

- The Local Area Traffic Management Plan - 2002 is reviewed and outstanding items incorporated into an implementation plan that deals with current issues.
- Traffic speed in Bromley reduces.
- Traffic analysis indicates heavy traffic has been diverted to non-residential roads.
- Resident surveys indicate that local wellbeing and happiness have improved.
- Better visual appeal in Bromley.
- Increased collaboration with New Zealand Transport Authority, ECAN and other agencies.

#### Community Outcomes:

Resilient Communities ✓ Liveable City ✓

---

### Progress suburban centres master plans projects

#### Why this matters:

- Some years have passed since the initial development of the Suburban Centres Programme Masterplans for Linwood Village, Sumner Village, Ferry Road, and Main Road.
- There are still some aspects of the master plans to be delivered and the board is keen that council updates these to meet the current needs of affected communities.
- Better street amenity will help encourage private investment in Linwood Village.



### What the board will do:

- Engage with the community to gauge interest in updating the Linwood Village, Sumner Village, Ferry Road or Main Road Master Plans.
- Advocate for the updating of the Master Plans, where communities are keen to see this occur.
- Continue work towards the Sumner Masterplan including the Village Green and implement funding swaps as identified in the Sumner Skate Park engagement.
- Advocate for bringing funding forward for the Linwood Village Streetscape Enhancement.

### We will measure our success by:

- The community is engaged with the Master Plan process.
- Delivery of Master Plans meet community needs.
- More private investment in Linwood Village.
- Improved streetscape in Linwood Village.
- Survey results indicate improved residents' satisfaction in Linwood Village improves; specifically happiness and feeling of safety.
- Sumner Village Green is developed.

### Community Outcomes:

Resilient Communities ✓ Liveable City ✓  
Prosperous Economy ✓

---

## Development of Linwood Park and Linwood pool: Te Pou Toetoe are aligned

### Why this matters:

- Communities in the southeast have been without a swimming pool facility since the closing of the Woolston Pool in 2009. The community board has championed the provision of Te Pou Toetoe, as a much needed aquatic facility in the area.
- Linwood Park is one of the oldest parks in the city and a key asset in the community board area.
- It is important to the board that these assets are developed as a coherent whole, especially with regards to parking for both facilities.

### What the board will do:

- Prioritise the development of an integrated plan for the park.
- Continue to monitor the progress of both pool and park development.
- Advocate for good community engagement in the process.
- Advocate for a better connection along the pathway from Linwood Park to Linwood College.

### We will measure our success by:

- The pool will open in December 2021.
- Park development will be aligned with the Pool, and community needs.
- The board signs off an integrated plan.

### Community Outcomes:

Resilient Communities ✓ Liveable City ✓

---

## Ōpāwaho to Ihutai – a spatial plan for the Lower Ōpāwaho Heathcote river

### Why this matters:

- The amenity and ecology of the Ōpāwaho Heathcote River needs to improve.
- The Ōpāwaho Heathcote River has significant pollution issues
- Significant council funding goes into a range of projects along the Ōpāwaho Heathcote River in the Waikura/Linwood-Central-Heathcote area. At times these projects appear uncoordinated and this project seeks to address this so projects are aligned according to a coherent holistic plan.
- The complexity of activity along the river requires a more coordinated approach to community engagement

### What the board will do:

- Progress the Ōpāwaho to Ihutai Working Party to develop a spatial plan for the area, building on previous work done by Council
- Advocate for funds from the 2021–2031 Long Term Plan for implementation of the plan
- Provide seed funding for plan development from the Waikura/Linwood-Central-Heathcote Discretionary Response Fund.
- Provide funding for community projects along the river corridor

### We will measure our success by:

- Resident surveys indicate improved satisfaction with the state of the river.
- The river is able to be accessed by the community.
- Health and the ecology of the river is improved.
- Activity along the river is coordinated and involves a wide range of interested stakeholders.
- Children will be able to fish and swim safely in the river.
- Greater alignment between projects according to a coherent holistic plan.
- The community will be well informed about activity taking place on and around the river.
- A reduction in maintenance issues.

### Community Outcomes:

Resilient Communities ✓ Liveable City ✓  
Healthy Environment ✓

## Improve community resilience and preparedness for the impact of climate change

### Why this matters:

- Whilst Climate Change is a matter of global and citywide importance, the Linwood-Central-Heathcote area will be particularly affected by sea level rise and coastal inundation.
- The community board wishes to support and enhance community and council activity in this area of endeavour.
- The impacts of climate change will exacerbate the resilience, social, cultural and economic issues already being experienced by people in poverty in our board area.

### What the board will do:

- A sustainability plan/charter will be developed for the Linwood-Central-Heathcote area that outlines the board's commitments and priorities for action and encourages citizen participation.
- Provide Strengthening Communities Funding to local projects.
- Advocate where necessary to support local residents.
- Support active recreation and transport, to reduce dependence of fossil fuels.

- Advocate for appropriate changes to rules regulations and infrastructure.
- Support local markets that encourage food resilience and shopping locally.
- Submitting on the council's climate change strategy and implementation plan.
- Encourage community involvement in climate change activities.

### We will measure our success by:

- A Waikura/Linwood-Central-Heathcote Community Board sustainability plan is developed and implemented.
- Local projects are supported.

### Community Outcomes:

Resilient Communities ✓ Liveable City ✓  
Healthy Environment ✓ Prosperous Economy ✓









# Community board funding

---

In Christchurch, community board funding is allocated to each board based on population and equity. The NZ Deprivation Index is the tool used to measure the equity portion of the allocation. The council uses the formula of 60% population and 40% equity when determining the allocations to each board.

The Linwood-Central-Heathcote Community Board has a total funding pool of **\$758,109** available for disbursement each year. The funding pool is allocated to two core funds: the Strengthening Communities Fund (SCF), and the Discretionary Response Fund (DRF).

## Strengthening Communities Fund

Grants from the Strengthening Communities Fund (SCF) are decided through an annual contestable round that is open for community group applications in March/April, and provides funding for the following period of 1 September to 30 August. The purpose of this fund is to support community sector organisations whose projects contribute to the strengthening of community wellbeing in the Waikura/Linwood-Central-Heathcote area.

## Discretionary Response Fund

The Discretionary Response Fund (DRF) is open for applications from 1 July until 30 June each year, unless expended earlier. The core purpose of this fund is to assist community groups where their projects and funding request falls outside other council funding criteria and/or closing dates. The DRF is also accessed for urgent funding in unforeseen situations, and community board projects.

## Waikura/Linwood-Central-Heathcote Community Board Projects

### Youth Development Scheme

Open for applications from 1 July to 30 June, the purpose of the Youth Development Scheme is to support and recognise excellence of achievement and effort by young people living in the Linwood-Central-Heathcote area with financial assistance for their further development. Applicants may qualify for assistance in the areas of sport and recreation, cultural activity, career development, leadership, and extra-curricular education, including representation in competitions at regional, national, and international levels.

## Off the Ground Fund

Open for applications from 1 July to 30 June, the Light Bulb Moments Fund provides fast access, one-off financial assistance of up to \$500 to residents and groups in the Linwood-Central-Heathcote area who wish to launch, promote, or celebrate a community project that enhances wellbeing, or results in positive social participation and community connectivity.

## Community Awards

**Community Pride Garden Awards** are presented in partnership with the Christchurch Beautification Society to residents and organisations with high quality gardens that enhance local streets.

**Edible and Sustainable Garden Awards** are presented in partnership with the Canterbury Horticultural Society to residents and organisations with gardens that yield food produce and/or contribute to environmental sustainability. Community Service and Youth Service Awards are awarded from nominations of people who have donated significant time and often critical skills to beneficial community projects and people in need of support in the local area.

## Community Events

The Waikura/Linwood-Central-Heathcote Community Board sets aside funds to support some existing and new community event initiatives, such as:

**Summer with Your Neighbours** provides subsidies for small neighbourhood gatherings over the summer months.

**Other** community events are allocated funding annually and delivered in partnership with the community, for example the Big Chill and LYFE.







# Your Local Community Board Members

---



## Alexandra Davids

(Chairperson)

Linwood Ward

**Mobile:** 021 308 440

**Email:** alexandra.davids@ccc.govt.nz



## Jake McLellan

(City Councillor)

Central Ward

**Mobile:** 027 844 029

**Email:** jake.mcLellan@ccc.govt.nz



## Yani Johanson

(City Councillor)

Linwood Ward

**Mobile:** 021 799 32

**Email:** yani.johanson@ccc.govt.nz



## Sara Templeton

(City Councillor)

Heathcote Ward

**Mobile:** 021 036 7672

**Email:** sara.templeton@ccc.govt.nz



## Jackie Simons

Linwood Ward

**Mobile:** 027 473 2795

**Email:** jackie.simons@ccc.govt.nz



## Michelle Lomax

Central Ward

**Mobile:** 027 586 7029

**Email:** michelle.lomax@ccc.govt.nz



## Tim Lindley

Heathcote Ward

**Mobile:** 021 707 198

**Email:** tim.lindley@ccc.govt.nz



## Darrell Latham

Heathcote Ward

**Mobile:** 021 190 2645

**Email:** darrell.latham@ccc.govt.nz

---

*This plan was developed with the invaluable wisdom of former board member Sally Buck, who is now retired.*

---

The Waikura/Linwood-Central-Heathcote Community Board generally meets in the Linwood-Central-Heathcote Community Boardroom at 180 Smith Street, on the first Monday and third Wednesday of each month at 3.30pm and 9.00am respectively. These meetings are open to the public. Agendas and minutes for each meeting can be found on the council's website at [ccc.govt.nz](http://ccc.govt.nz).

If you would like to speak at a board meeting, please contact the Community Board Advisor on 03 941 6601



