

# Land Drainage Recovery Programme

Reducing the risk of flooding throughout Christchurch City

## Dudley Creek Work Notice

### Chancellor Street Creek Works

7 July 2016

- From 12 July we will be working near the Chancellor Street footbridge. So we can keep the Chancellor Street footbridge open we will do this work in **three stages**. Each stage will take about **two weeks** subject to favourable weather and on-site conditions.

#### Stage 1: Outside 60 Chancellor Street (see Map 1)

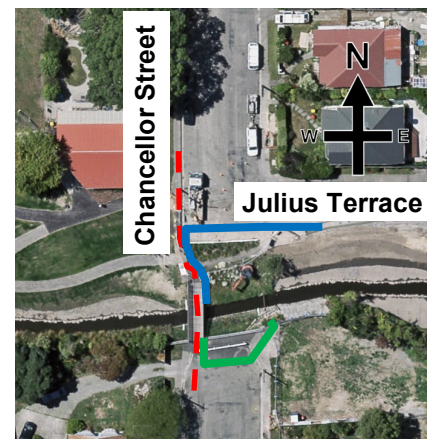
- Pedestrians can use the footpath during all stages.**
- Please supervise children and pets around the fencing.

#### Stage 2: North of Dudley Creek (see Map 1)

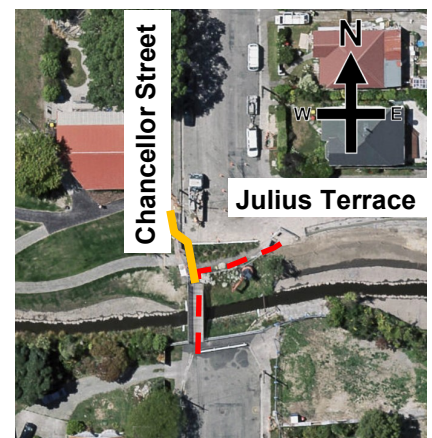
- Fencing will move to the north side of Dudley Creek.
- Please follow the signs for walking routes around the worksite.

#### Stage 3: Final stage (see Map 2)

- Footbridge access from creek-side footpath.
- Please follow the signs and don't walk across the newly landscaped area.



Map 1: Stages 1 & 2



Map 2 : Stage 3

#### Impacts:

There are **no traffic impacts** for this work, but please drive to the conditions and be aware of pedestrians and cyclists.

Please expect a moderate level of construction noise.

Our work hours are 7am-6pm Monday to Friday and Saturday mornings.

KEY	
Stage 1 fence	
Stage 2 fence	
Stage 3 fence	
Pedestrian access to footbridge	

**Downer**  
Relationships creating success

Need more information? Contact Downer on 0800 033747 or [Dudleyinfo@downer.co.nz](mailto:Dudleyinfo@downer.co.nz). For previous work notices you can also visit [www.ccc.govt.nz/dudleycreek](http://www.ccc.govt.nz/dudleycreek)