

# Land Drainage Recovery Programme

Reducing the risk of flooding throughout Christchurch City

## Dudley Creek drone fly over

August 2018

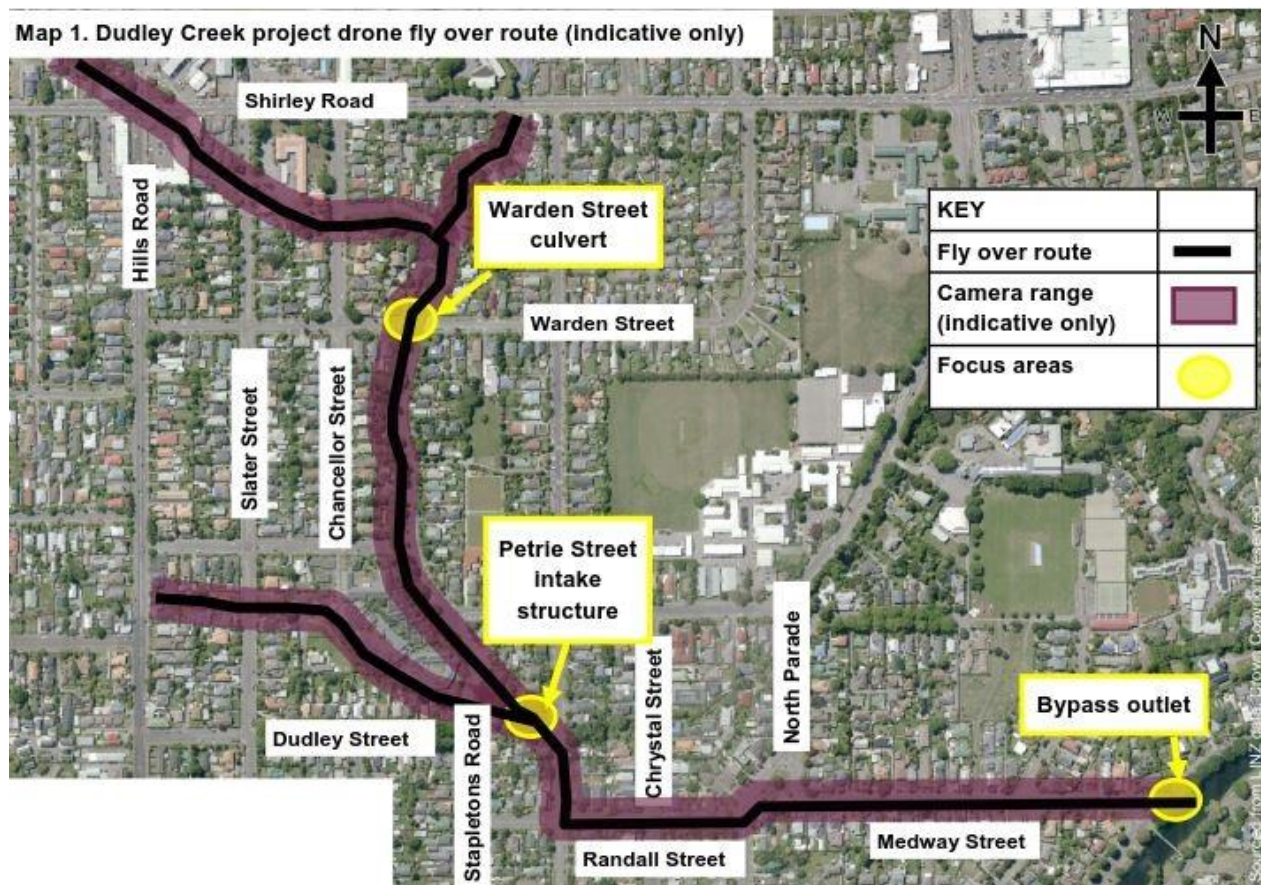
We are flying a drone along Dudley Creek to capture the works and environmental enhancements along the creek.

We often use drones (or Un-manned Aerial Vehicles) as an innovative tool to inspect, survey, map and analyse infrastructure and the environment.

The drone fly over path will closely follow the waterway, shown in the map below, with limited camera range each side of the waterway. Your privacy is important to us, and will be respected during the flyover.

The drone flyover is scheduled for 16 or 17 August, subject to favourable weather conditions.

Map 1. Dudley Creek project drone fly over route (Indicative only)



If you have any questions or concerns, please contact us using the details below.