

# Land Drainage Recovery Programme

*Reducing the risk of flooding throughout Christchurch City*

## St Albans Creek Work Notice

### 40 Guild Street extension of consent

14 May 2018

#### What we are doing

You have received an update last week from Christchurch City Council about the works near your house. As you live near the Anglican Living site we are writing to you with some further information about our application to extend our consent to Friday 31 August 2018.

#### Why do we need an extension?

Higher than normal rain over the last few months have meant we could not work in the creek as many days as planned.

#### Why are we using this site?

Using the empty site at Anglican Living has allowed us to work on private properties without driving excavators through gardens. Storing large items on the Anglican Living site has minimised the size of sites on the roads, allowing more residents to access their driveways throughout the works.

#### What can I expect?

There is a plan over the page showing the proposed use of the site. With the work on Stapletons Road and Slater Street culvert now largely completed you can expect the number of truck movements to reduce. As the work further progresses the stockpiles will reduce and any left over will be removed. Trees will be planted on the banks and the rest of the site polymer sprayed to suppress dust.

#### Have your say.

We appreciate that living next to our work area and stores at 40 Guild Street has been very challenging. Over the last few months we have received many questions and suggestions about how we could reduce the impact for nearby residents. We welcome your feedback and questions about how this extension of time could affect you.



**Need more information on the works? Contact Downer on  
0800 033 747 or email [dudleyinfo@downer.co.nz](mailto:dudleyinfo@downer.co.nz)**

**For more information and works notices please visit  
[www.ccc.govt.nz/dudleycreek](http://www.ccc.govt.nz/dudleycreek)**

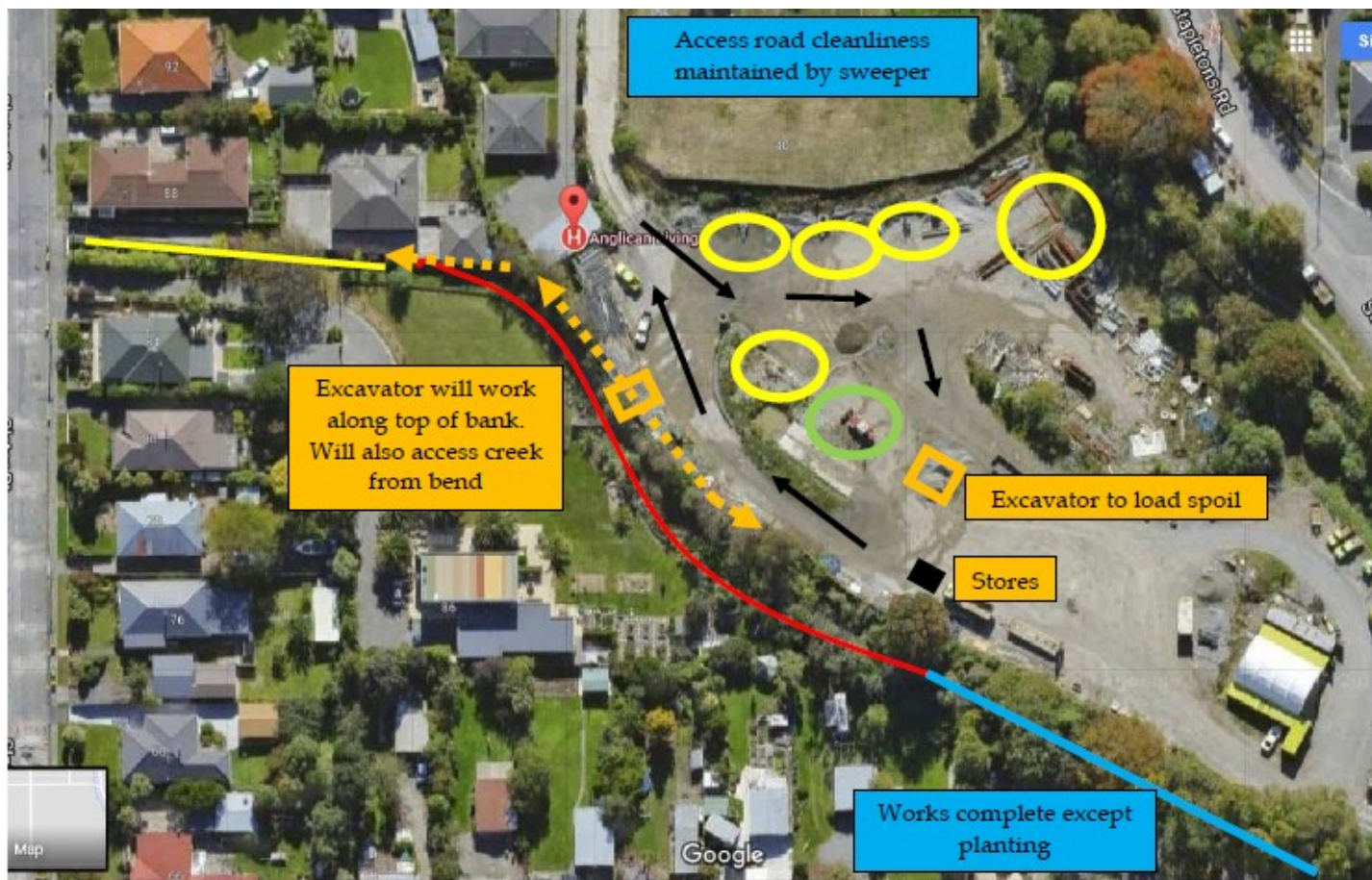


[www.ccc.govt.nz/floodmitigation](http://www.ccc.govt.nz/floodmitigation)



To contact the Christchurch City Council call  
941 8999 or 0800 800 169

**Christchurch  
City Council** 



**Map 1: Proposed use of 40 Guild Street**

### Dust reduction

Sprinkler System set up on a timer to assist in keeping dust down.

Spraying of polymer is available as required to also keep dust down.

A sweeper truck visits regularly to remove dirt and dust from the roads.

### What happens after August 31 2018?

There may still be some planting on the banks of 40 Guild Street and also in private properties on Slater Street and Dudley Street.

Some fencing will be installed on private properties.

This is quiet work involving a small crew.

Key	Description
	Separate section of work starting mid-May
	Trees already cut down to suit access for the in-stream works
	Stock pile area: basalt rock, ballast, topsoil, AP65 metal
	Spoil area from the creek stockpiled – to load onto trucks
	Direction of trucks - in and out via Guild St

