



KidsFest

He hīkoi
rama tiro tiro
koiora o
te pō

Hei te hekenga o te rā, hei te pōuri o te pō, ka rerekē katoa te aotūroa.
Rerekē te rongo, te kakara, rerekē te āhua, he rerekē hoki ngā tangi.

**Hei te hekenga o te rā, hei te pōuri o te pō, ka rerekē katoa te aotūroa.
Rerekē te rongu, te kakara, rerekē te āhua, he rerekē hoki ngā tangi.**

He tini anō ngā koiora whakamīharo o Aotearoa puta ai i te pō anake. Waihoki ētahi o ā tātou kīrearea!

Kāore tātou e tino kitekite i ētahi o ā tatou kararehe māori nā te mea, he rerekē ngā hāora oho i ō tātou. Koinā te take o te kī a te tangata, me whakahoahoa atu ki aua kararehe nei!

**Possum
Paihamu**

He tino nanakia rāwaho tēnei, ā, rite tonu ki ngā nanakia katoa ka haere te paihamu i raro i te ko rowai o te pō.



**Tarata / Lemonwood flowers
He puāwai tarata / lemonwood**

Ka kitea ngā tino puāwaitanga ātaahua o ētahi tupu taketake nō Aotearoa i te pō, he mea tēnei e poapoina ai te aitanga rere pō. Āe, he iti noa ngā puāwai o te tarata / lemonwood, engari ka puta te tino kakara i ngā mea nei i te pō.



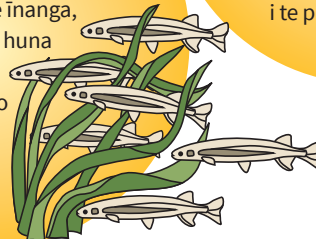
**Pūkeko
Pūkeko**

E mōhio ana te nuinga o tātou ki te pūkeko, engari i mōhio koe, nō ēnei manu tētahi tangi rerekē o ngā pō? He kaha te pūkeko ki te tangitangi i a ia e rere ana, ahakoa i te awatea, i te pō rānei.



**Īnanga
Īnanga**

He haere whakamōtoro te haere o te nuinga o ngā ika māori o Aotearoa pēnei me te īnanga, he haere pō hoki – ka huna i raro i ngā toka, i ngā tupu, i ngā poro rākau i te rā, ka puta mai i te pō ki te kai.



**Tree wētā
Wētā**

Kia tino pōuri kerekere te pō ka oho ngā wētā i ō rātou kōhao i ngā manga rākau, ka ngōki atu ki ngā rau hou me ngā putiputi ki te kai i te weheruatanga pō.



**Kererū / wood pigeon
Kererū**

Ko ētahi manu Māori tae atu ki te kererū, he tino pukukori, i te atatū me te ahiahi pō. Tētahi huarahi tiaki i ngā manu māori, he pupuru i tō ngeru i roto i te whare i ngā pō.



**Kiwi
Kiwi**

Ka totitoti te kiwi i te pōuri, ko tana ihu koi me tana whāwhā haere ki te ārahi i a ia. Mā ōna kumikumi tonu hei ārahi i tōna whāwhā i tōna ara, ā, ko te kiwi anake te manu whai pongaihu i te pito o tōna ngutu.



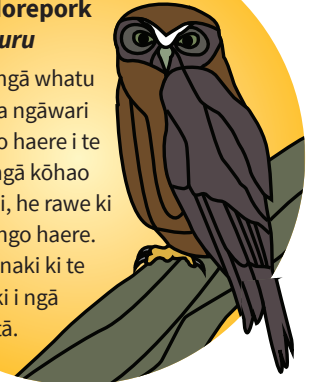
**Lyre moths
Ngā pūrerehua lyre**

Kua mīharo koe ki te tini o ngā putiputi mā o ngā rākau o Aotearoa? Te take i pērā ai, hei tō mai i ngā kaikawe hae mō ngā putiputi o Aotearoa e rere pō nei - pēnei tonu i ngā pūrerehua lyre nei.



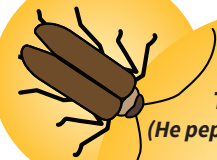
**Ruru / Morepork
Ruru**

Nā te nui o ngā whatu o ngā ruru ka ngāwari noa te tiro tiro haere i te pō, waihoki ngā kōhao taringa nunui, he rawe ki te whakarongo haere. Ka rere rōnaki ki te kāwhaki i ngā wētā.



**Huhu beetle
Te tunga rere
(He pepe te muimui ki ētahi)**

Hei ngā pō makariki, ka huna ngā pāpapa i roto i te pōuri me te haukū, kia kore ai e kitea e ngā kaikonihī, nā reira te tini a Tāne e ngoki haere nei i te papa o te ngahere i te pō.



**Tuna / Long-finned eels
Ngā tuna**

Putā mai ai tēnei mea te tuna i tōna rua i ngā pō ki te kimi i ngā ika ririki, i ngā pepe pepeke, mā te whai i tā te ihu e hongī ana.

