

Terms & Conditions

General conditions

- The organisers shall absolve the Council from any liability whatsoever relating to the booking of the above area.
- All park bylaws must be complied with.
- Please carry your booking confirmation with you in case other visitors are using the space. If there is any confusion with other visitors please ring the 24 hour call centre to be directed towards the duty ranger.
- A Park Ranger can be contacted through the CCC Call Centre, Ph (03) 941 8999 should you need their services.

To ensure everyone's safety and enjoyment:

- The hirer is to accept responsibility for leaving the above area in a clean and tidy condition after use and for any damage resulting from the use of the above areas. Any damage is to be repaired to the satisfaction of the Christchurch City Council.

As our parks are public spaces:

- Public access must be maintained at all times. Please do not park in the middle of the park on the grass. Be aware that other non-related activities may be occurring in close proximity to the booked area during your period of use.

Conditions and information specific to Hagley Park Banner Sites

- Frames can only advertise events that are being held in Hagley Park or the Christchurch Botanic Gardens.
- Frames can only be erected for a maximum of 2 weeks prior to the booking and must be removed within 1 working day following completion of the event.
- Banner sites can only be booked up to 2 weeks prior to their event. They can only be booked for a minimum of 1 week and a maximum of 2 weeks.
- Christchurch City Council is only responsible for providing and maintaining banner frames. All other equipment will need to be provided by the event organisers.
- Christchurch City Council takes no responsibility for any damage caused to temporary signs for duration of the booking.
- The Christchurch City Council will be responsible for obtaining repairs to any damage to the frames only.
- Failure to pay the booking fee before the rental date may result in your booking being cancelled.

Frame dimensions (specifications for artwork):

- Single frame - 845mm (84.5cm) Wide x 1650mm (1.65m) High
- Double frame - 2900mm (2.9m) Wide x 1700mm (1.7m) High

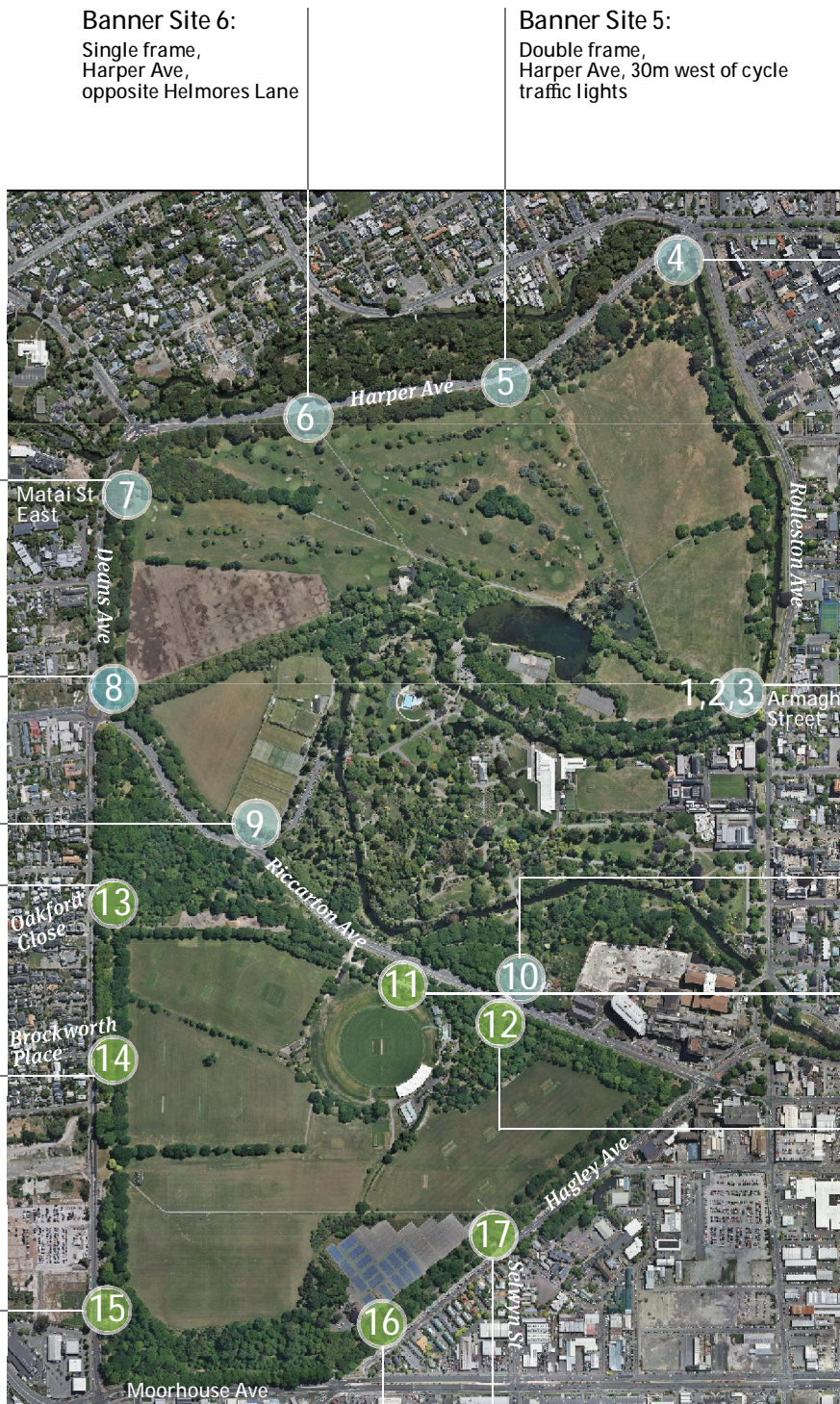
Hagley Park Banner Sites

Bookable Locations

17 bookable sites available
North Hagley Park and South Hagley Park

● North Hagley sites

● South Hagley sites



Banner Site 6:
Single frame,
Harper Ave,
opposite Helmores Lane

Banner Site 5:
Double frame,
Harper Ave, 30m west of cycle
traffic lights

Banner Site 4:
Double frame,
Harper Ave, opposite 3rd
power pole from bridge

Banner Site 7:
Single frame,
Deans Ave,
opposite Matai St East

Banner Sites 1, 2, 3:
1 - Double frame, closest to
Armagh St bridge
2 - Double frame, furthest from
Armagh St bridge
3 - Double frame, beyond
roundabout at Armagh gates

Banner Site 8:
Double frame,
Deans Ave/Riccarton Ave
intersection

Banner Site 9:
Double frame,
Riccarton Ave,
Botanic Gardens entrance

Banner Site 10:
Double frame,
Riccarton Ave,
Band Rotunda entrance

Banner Site 13:
Single frame,
Deans Ave,
opposite Oakford Close

Banner Site 11:
Double frame,
Riccarton Ave, CHS entrance

Banner Site 14:
Single frame,
Deans Ave,
opposite Brockworth Place

Banner Site 12:
Double frame,
Riccarton Ave,
between Hagley Oval entrances

Banner Site 15:
Double frame,
Deans Ave/Moorhouse Ave
intersection

Banner Site 16:
Double frame,
Hagley Ave,
Netball Centre entrance

Banner Site 17:
Single frame,
Harper Ave,
opposite Selwyn Street