

CFPE Approved Packaging

Coffee Vendor Manual

Christchurch City Council
Events Production Team

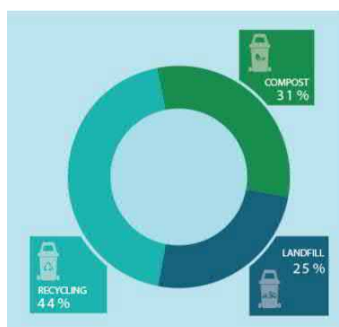
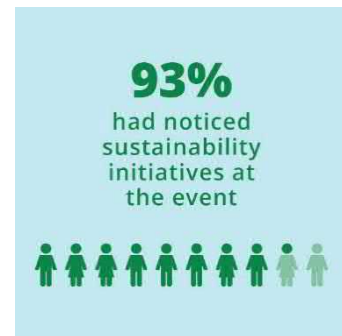
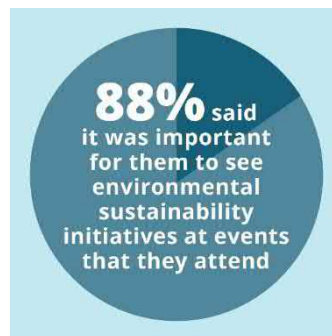
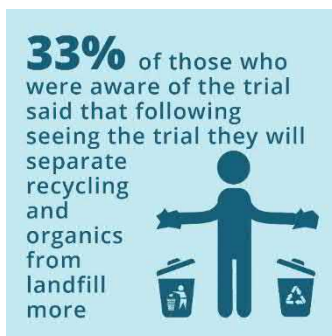
Composting Food Packaging at Events – Trial 2.0

Results to Date

At an event the majority of event waste is made up of food and disposable packaging. The Council aspired that such waste could be diverted away from landfill and instead into the composting waste stream. The Council then chose 3 events in 2017 as part of the Compostable Food Packaging at Events (CFPE) Trial 1.0 in 2017 where a small selected range of compostable packaging was used by the food vendors involved with the participating events. After a successful CFPE Trial 1.0 diverted 12 tonnes of waste the Council then extended the range of compostable food packaging to be used at 41 internally and externally produced events over 2018 and 2019, which was called CFPE trial 2.0. All of the organic compostable food packaging products at these events are hand sorted and sent to the Living Earth composting facility. The only products in Christchurch that can currently be commercially composted are organic non-lined bioplastic-free products.

Trial 2.0 continues to be a huge success as outlined in the below statistics and key findings:

- 49 tonnes of waste has been diverted from landfill - that's 75% of the total event waste
- Overall, 61 tonnes of waste has been diverted from both Trial 1.0 and Trial 2.0
- We're moving closer towards our goal of 80% diversion from landfill
- So far there has been 29 participating events
- There has been positive support from general public for the compostable initiative
- The trial has opened up communication between food vendors, small local businesses, suppliers and composting facilities



Composting Food Packaging at Events – Trial 2.0

What is PLA?

Most disposable food packaging in the market which is labelled as “compostable” often has a thin lining, which acts as a waterproof coating and is made of a material known as “bioplastic”. One particular bioplastic commonly used and made from corn starch is called PLA (poly-lactide acid). Although PLA bioplastics are certified as commercially compostable to multiple international standards, there are still issues with composting them in facilities which produce certified organic compost in New Zealand. PLA bioplastics currently lack the ability to attain the local certification that is required by the commercial composting facility in Christchurch, Living Earth.

Unfortunately, it is not possible to use paper- or cardboard-only materials for some products, namely coffee cups. Currently there is a need for some sort of lining for certain types of food & beverage such as hot coffee, in order to comply with food service safety standards.

We recommend PLA-lined products because they come from more sustainable sources than typical plastic products and provide a significantly lower carbon footprint than the manufacturing process of typical plastic.

Key points to note about PLA:

- Contaminates normal recycling
- Requires a special environment to compost
- Not accepted in organic compost facilities in Christchurch
- Must be disposed of in general waste bins

However, in the near future we hope to either find a viable way to compost PLA products in Christchurch or to find a more sustainable alternative to PLA altogether.

PLA products can be purchased from any supplier (not just the four approved food packaging suppliers). Please ensure the product has the PLA symbol or specifically says it is made from plant-based materials.

You must have approval from the CFPE representative to use PLA products, as there may be a non-PLA option that we can compost instead.

It is always great to encourage and reward your customers that bring their own reusable cups!



Composting Food Packaging at Events – Trial 2.0

Guidelines for Coffee and Food Vendors

As a condition to your approval as a Coffee / Food Vendor for the Event you have agreed to participate in the Composting Food Packaging at Events – Trial 2.0 which is being run by the Christchurch City Council.

Guidelines for you to follow are outlined below:

- For this Event you can use any plant-based coffee cups and lids (look for the PLA symbol). There are no restrictions on which supplier you get these products from.
- Please use a sugar pourer / jar rather than individual sugar sachets to dispense sugar.
- You can use any wooden/bamboo stirrers, cutlery or chopsticks (no plastic wrapping and no bioplastic cutlery is permitted).
- If serving any food, you must only purchase and use approved compostable food packaging available from approved suppliers for Trial 2.0. The **ONLY** suppliers with approved food packaging products are:
 - Ecoware
 - Innocent Packaging
 - Biopak
 - Detpak

Please note you may be required to cease trading at the request of Event staff if you fail to use approved compostable food packaging products. A complete list of approved food packaging products is included in this manual.

- You can buy these products from many selected distributors in the city but please ensure they are the correct approved products.
- You can use any serviettes.
- You can use any paper bags (non-waxed / non-water resistant).
- You can only use cardboard straws (no PLA / plastic).
- Other PLA products are limited on a case-by-case basis. Please discuss with us before purchasing.
- Please ensure you bring product boxes and your receipt with you onsite for auditing.

If you have any queries please contact us by emailing eventvendors@ccc.govt.nz. We are more than happy to talk you through the process and help you find the approved products that are right for you.

We're excited to have you involved with the initiative!

Composting Food Packaging at Events – Trial 2.0

Terms and Conditions

As a condition to your approval as a Coffee/Food Vendor for the Event, you have agreed to participate in the Composting Food Packaging at Events – Trial 2.0 which is being run by the Christchurch City Council (“**Trial 2.0**”).

The Terms & Conditions are outlined below.

Please

- (a) Read this document carefully, taking note of the complete list of approved food packaging products.
 - (b) Retain a copy for your own reference.
-

1. Vendor Meeting:

- 1.1. You must attend the Food Vendor Meeting for Trial 2.0 (if you haven’t already attended training) or make other arrangements with Shanti Campbell Shanti.Campbell@ccc.govt.nz

2. Approved Products and Suppliers:

- 2.1. For this Event you must only purchase and use approved compostable food packaging available from approved suppliers for Trial 2.0 (a complete list of suppliers and products is included in this manual).

3. Audits:

- 3.1. You must cooperate with Event staff carrying out any on-site compostable food packaging audits (“**Audit**”).

4. Failure to Comply with Trial 2.0 Requirements.

- 4.1. You may be required to cease trading at the request of Event staff if you fail to meet any of the Trial 2.0 requirements.
-

These Terms & Conditions can be found online:

<https://eptccc.wufoo.com/forms/qqws8it0nblchv/>

You are required to follow the link to complete the online Terms & Conditions if you have not already done so.

Thank you for your cooperation and support in diverting more event waste away from landfill.

CFPE Approved Food Product Complete List

Ecoware - www.ecoware.co.nz

	Kraft Tray	Small (17x14x5 cm) Medium (21x18x5 cm) Large (26x20x5 cm)	EBB-T1 EBB-T3 EBB-T4
	Kraft Snack Box	Regular (22x12x8 cm) Large (25x14x8 cm)	EBB-SB-R EBB-SB-L
	Kraft Burger Box	(15x13x8 cm)	EBB-BB
	Kraft Chip Cup	(11x8x8 cm)	EBB-CC
	Kraft Long Box/Tray – Dividable	(25x10x8 cm)	EBB-HBD-D
	Bamboo Food Box	(850 ml) (1100 ml)	LB-850 LB-1100
	Bamboo Food Box – Partitioned	(850 ml) (1100 ml)	LB-850-2P LB-1100-2P
	Bamboo Food Box – Lid		LBL-B
	Bamboo Plates	(7 inch) (9 inch)	BP-7 BP-9
	Bamboo Bowls	(500 ml)	BB-500-B

CFPE Approved Food Product Complete List

Innocent Packaging - www.innocentpackaging.co.nz

	Clamshell	(1000 ml)	SWHC10
	Large Square Clamshell	(22x22 cm)	WHCLS
	Two Compartment Clamshell	(22x15 cm)	WH2C
	Burger Box Clamshell	(15x15 cm)	WHBC
	Flat Container & Lid (wheat straw)	Small (16 oz) Medium (24 oz) Large (32 oz) Uni-Lid	WHTC-SM WHTC-MED WHTC-LRG TCUL-WS
	Straw Plate	(7 inch) (9 inch)	WHP7 WHP9
	Straw Bowl	(350 ml)	WHBOLI12
	Tiny As Tub	(63x31mm)	BT-TINY

CFPE Approved Food Product Complete List

BioPak - www.biopak.co.nz

	Round Plate (White)	(6 inch) (7 inch) (9 inch) (10 inch)	B-PL-06 B-PL-07 B-PL-09 B-PL-10
	3 Compartment Round Plate (White)	(9 inch) (10 inch)	B-PL-93 B-PL-11
	Oval Plate (White)	(10.25x7.75 inch) (12.5x10 inch)	B-PL-16-1 B-PL-16-2
	Bowls (White)	(12 oz) (16 oz)	B-BL-12 B-BL-16
	Bowls with Lid (White / Natural)	(24 oz) (32 oz) (40 oz) Lid (fits all)	B-BL-24 B-BL-32 B-BL-40 B-BLL
	Square Tub with Lid (White / Natural)	(280 ml) (480 ml) (630 ml) Lid (fits all)	B-SLB-280 B-SLB-480 B-SLB-630 B-SLBL
	Tray (Natural)	(750 ml) (1000 ml)	B-LB-750T B-LB-1000T
	Tray with Lid (White / Natural)	(750 ml) (1000 ml) Lid (fits both)	B-LB-750 B-LB-1000 B-LBL
	5 Compartment Tray (White)	(260x209x25 mm) (320x215x25 mm)	B-TL-15 B-TL-16
	Clamshell (White)	(6x6x3 inch) (9x6x3 inch) (7.8x8x3 inch) (9x9x3 inch)	B-HL-66 B-HL-96 B-DHL-81 B-HL-91
	2 Compartment Clamshell (White)	(9x6x3 inch) (11.6x6x3 inch)	B-HL-96-2 B-HL-1156-2

	3 Compartment Clamshell (White)	(7.8x8x3 inch) (9x9x3 inch)	B-DHL-83 B-HL-93
	Pizza Slice Clamshell (Natural)	(9 inch diameter)	B-HLP-N
	Chip Box	(70x45x90 mm)	BB-CHIP BOX
	Burger Box	(105x105x85 mm)	BB-BURGER BOX
	Dinner Box	(178x160x80 mm)	BB-DINNER BOX
	Family Box	(290x170x85 mm)	BB-FAMILY BOX
	Snack Box	Regular (175x90x84 mm) Large (204x109x84 mm)	BB-SNACK BOX
	Tray	(131x91x50 mm) (178x178x45 mm) (180x134x45 mm) (228x152x45 mm) (255x179x58mm)	BB-TRAY1 BB-TRAY2 BB-TRAY3 BB-TRAY4 BB-TRAY5

CFPE Approved Food Product Complete List

Detpak - www.detpak.com

	Snack Box	Regular (175x90x85 mm) Large (205x107x78 mm)	M274S0010 M275S0010
	Dinner Box	Regular (178x160x75 mm) Family (290x170x75 mm)	M420S0010 M304S0010
	Burger Clam	(105x102x83 mm)	M458S0010
	Hot Dog Clam	(210x70x77 mm)	M479S0010
	Food Tray	(131x91x50 mm) (178x178x45 mm) (180x134x45 mm) (152x228x45 mm) (255x179x58 mm)	M393S0010 M384S0010 M279S0010 M437S0010 M467S0010
	Chip Cup		M429S0010

NOTE: Prices are not shown on these lists. Prices may differ between different suppliers and distributors.