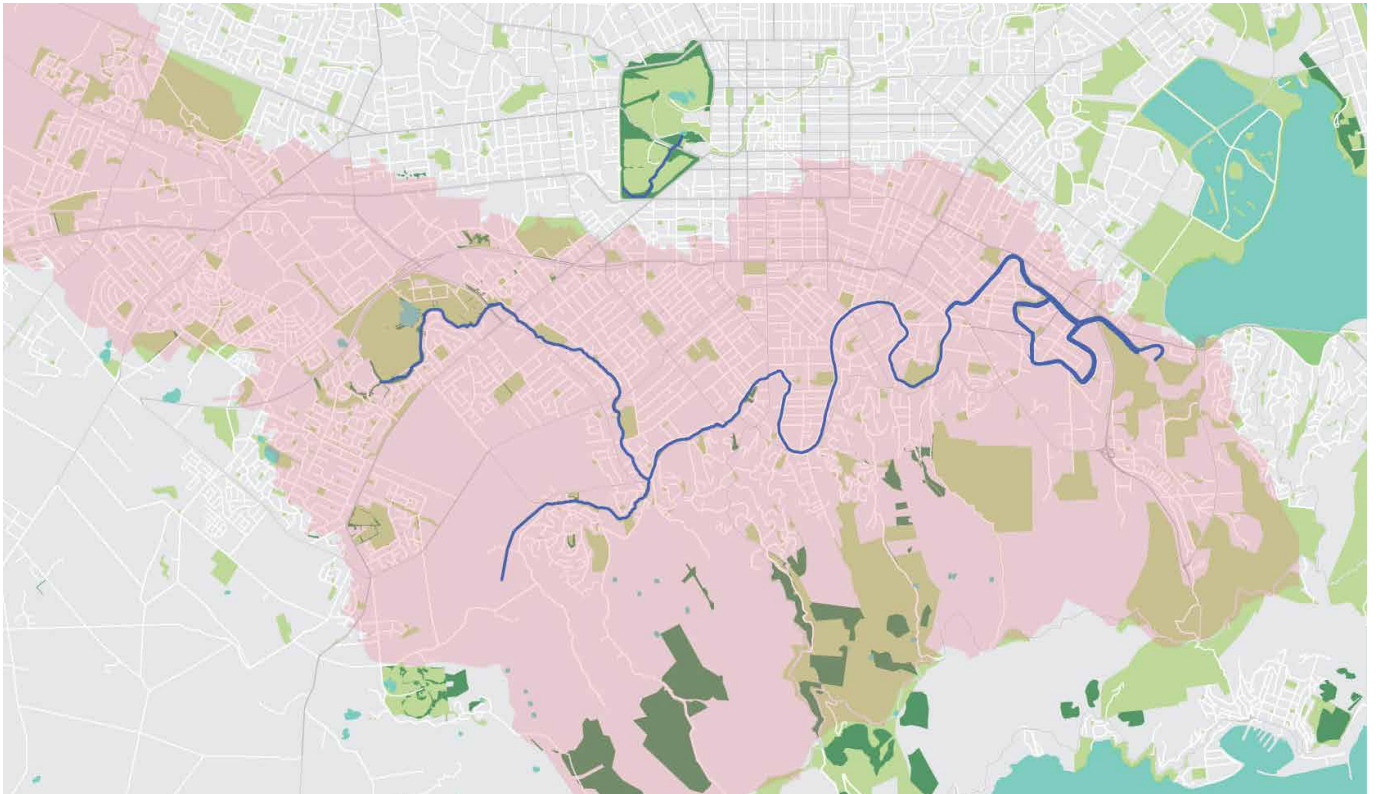


Waterway Health Report Card 2018

Ōpāwaho/Heathcote River catchment

Christchurch city has more than 200 kilometres of waterways within five main river catchments – Ōtākaro/Avon, Ōtūkaikino, Pūharakekenui/Styx, Ōpāwaho/Heathcote and Huritini/Halswell. We assess the health of each catchment, testing water and sediment quality and monitoring habitat, algae, plants, insects and fish.



Source

Wigram/Port Hills

Report score

D

Elevation

0-10 metres above
sea level

Land use

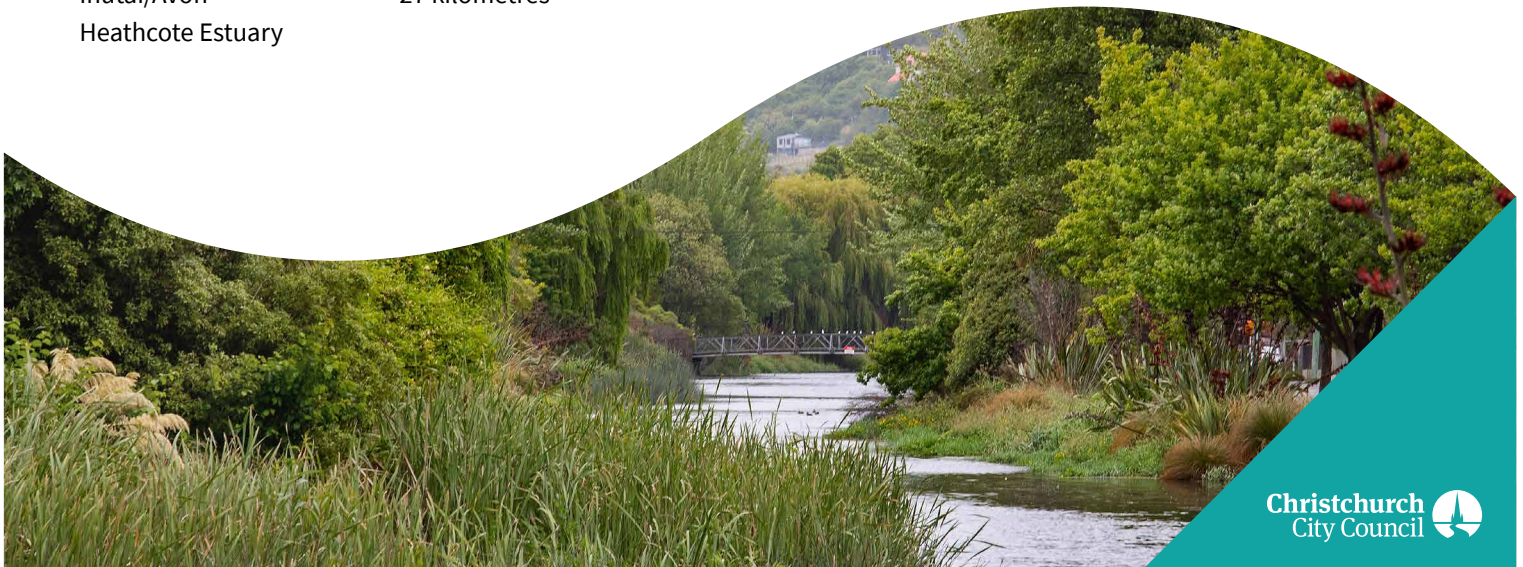
Urban (residential,
commercial and industrial)
and rural

Mouth

Ihutai/Avon-
Heathcote Estuary

Length

27 kilometres



Assessing waterway health

We measure the health of each waterway using a Water Quality Index (WQI), a Sediment Quality Index (SQI) and the Quantitative Macroinvertebrate Community Index (QMCI).

See more at ccc.govt.nz/environment/water/waterways/waterway-monitoring

Water Quality Index (WQI) Score

We use a WQI specific to Christchurch waterways. Each monitoring site is scored against guideline levels for copper, zinc, pH, suspended solids, dissolved oxygen, temperature, ammonia, nitrogen, phosphorous, biochemical oxygen demand and *Escherichia coli*. The median across the catchment is graded:

A = 90 – 100 (very good)

B = 80 – 89.9 (good)

C = 70 – 79.9 (fair)

D = 40 – 69.99 (poor)

E = < 39.9 (very poor)

Ōpāwaho/Heathcote catchment WQI score: **D**

Sediment Quality Index (SQI) Score

We use a SQI specific to instream sediment of Christchurch waterways. This index is scored against guideline levels for copper, lead, zinc and polycyclic aromatic hydrocarbons. The median across the catchment is graded:

A = 90 – 100 (very good)

B = 80 – 89.9 (good)

C = 70 – 79.9 (fair)

D = 40 – 69.99 (poor)

E = < 39.9 (very poor)

Ōpāwaho/Heathcote catchment SQI score: **C**



Tuna/Eels



Redfin Bully

Credit: Aquatic Ecology Limited

Quantitative Macroinvertebrate Community Index (QMCI) Score

The QMCI assesses the macroinvertebrate species (organisms with no spine) present and their tolerance to pollution, to determine a waterway's likely water quality. The index values are converted to scores for grading the catchment:

A = > 5.99 (excellent; clean water)

B = 5.00 – 5.99 (good; likely mild pollution)


C = 4.00 – 4.99 (fair; likely moderate pollution)


D = < 4.00 (poor; likely severe pollution)


Ōpāwaho/Heathcote catchment QMCI score: **D**

The Ōpāwaho/Heathcote catchment overall score is **D**

Contact us

 Katie Noakes, Waterways Ecologist

 03 941 6279

 Katie.Noakes@ccc.govt.nz