

LEGEND

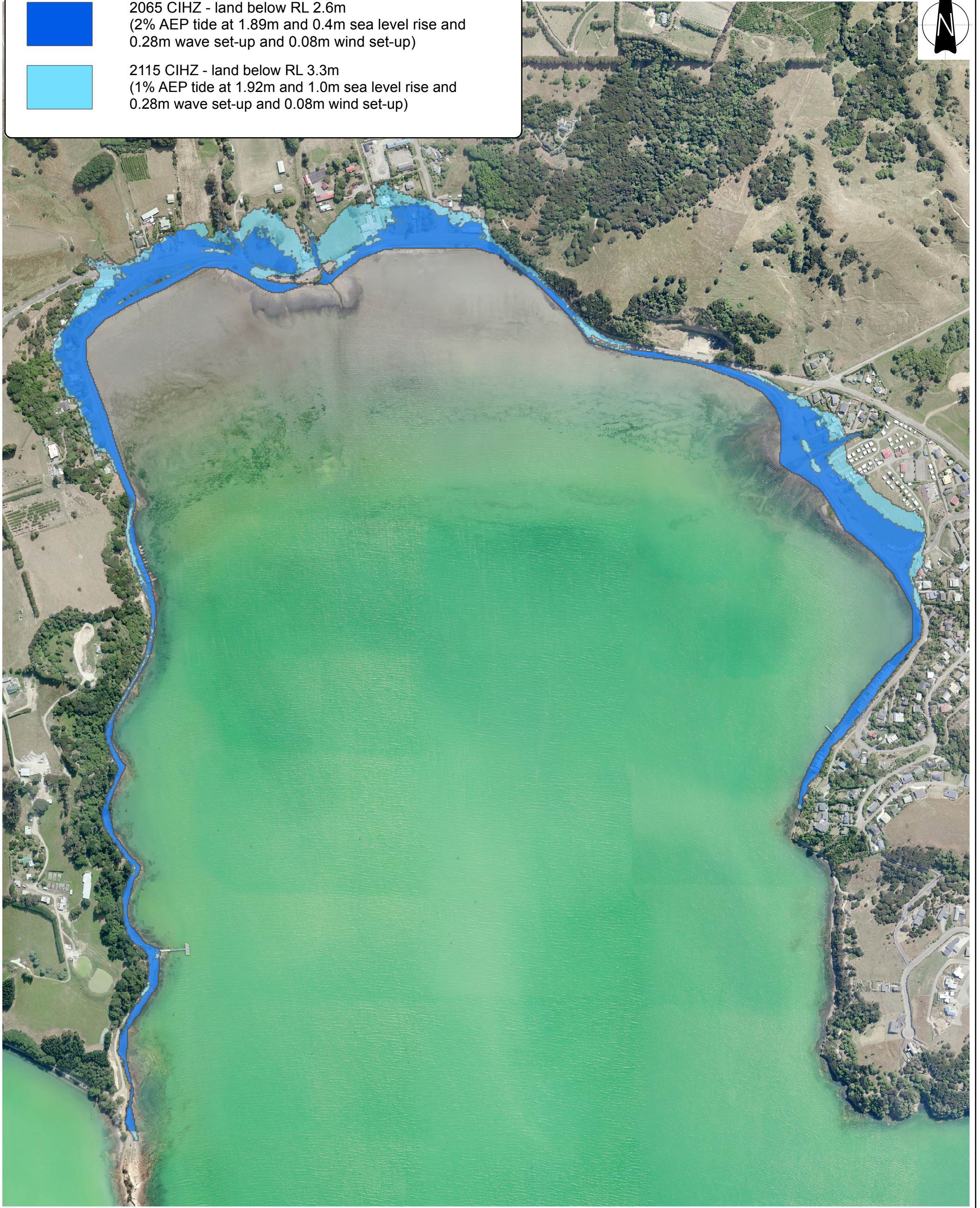
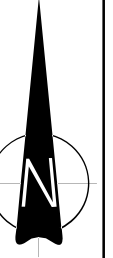
Coastal Inundation Hazard Zone (CIHZ)



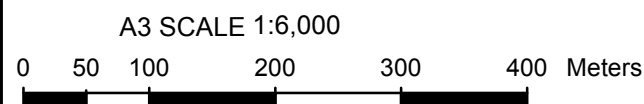
2065 CIHZ - land below RL 2.6m
(2% AEP tide at 1.89m and 0.4m sea level rise and 0.28m wave set-up and 0.08m wind set-up)



2115 CIHZ - land below RL 3.3m
(1% AEP tide at 1.92m and 1.0m sea level rise and 0.28m wave set-up and 0.08m wind set-up)



Notes: Aerial photograph supplied by LINZ and Eagle Technology



TT
Tonkin & Taylor
Environmental and Engineering Consultants
Level 1, 525 Cameron Road, Tauranga
www.tonkin.co.nz

DRAWN	MCI	Apr.15
CHECKED		
APPROVED		
ARCFILE Duvauchelle_CIHZ_R2.mxd		
SCALE (AT A3 SIZE) 1:6,000		
PROJECT No.	851857.001	

CHRISTCHURCH CITY COUNCIL
COASTAL HAZARD ASSESSMENT
DUVAUCHELLE
Coastal Inundation Hazard Zone

FIGURE No. Appendix E 8.

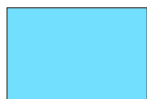
Rev. 2

LEGEND

Coastal Inundation Hazard Zone (CIHZ)



2065 CIHZ - land below RL 2.4m
(2% AEP tide at 1.89m and 0.4m sea level rise and 0.15m wave set-up)



2115 CIHZ - land below RL 3.1m
(1% AEP tide at 1.92m and 1.0m sea level rise and 0.15m wave set-up)



Notes: Aerial photograph supplied by LINZ and Eagle Technology

A3 SCALE 1:3,000



Tonkin & Taylor
Environmental and Engineering Consultants
Level 1, 525 Cameron Road, Tauranga
www.tonkin.co.nz

DRAWN	MCI	Apr.15
CHECKED		
APPROVED		
ARCFILE	Takamatua_CIHZ_R2.mxd	
SCALE (AT A3 SIZE)	1:3,000	
PROJECT No.	851857.001	

CHRISTCHURCH CITY COUNCIL
COASTAL HAZARD ASSESSMENT
TAKAMATUA
Coastal Inundation Hazard Zone

FIGURE No.
Appendix E 9

Rev. 2