

LEGEND

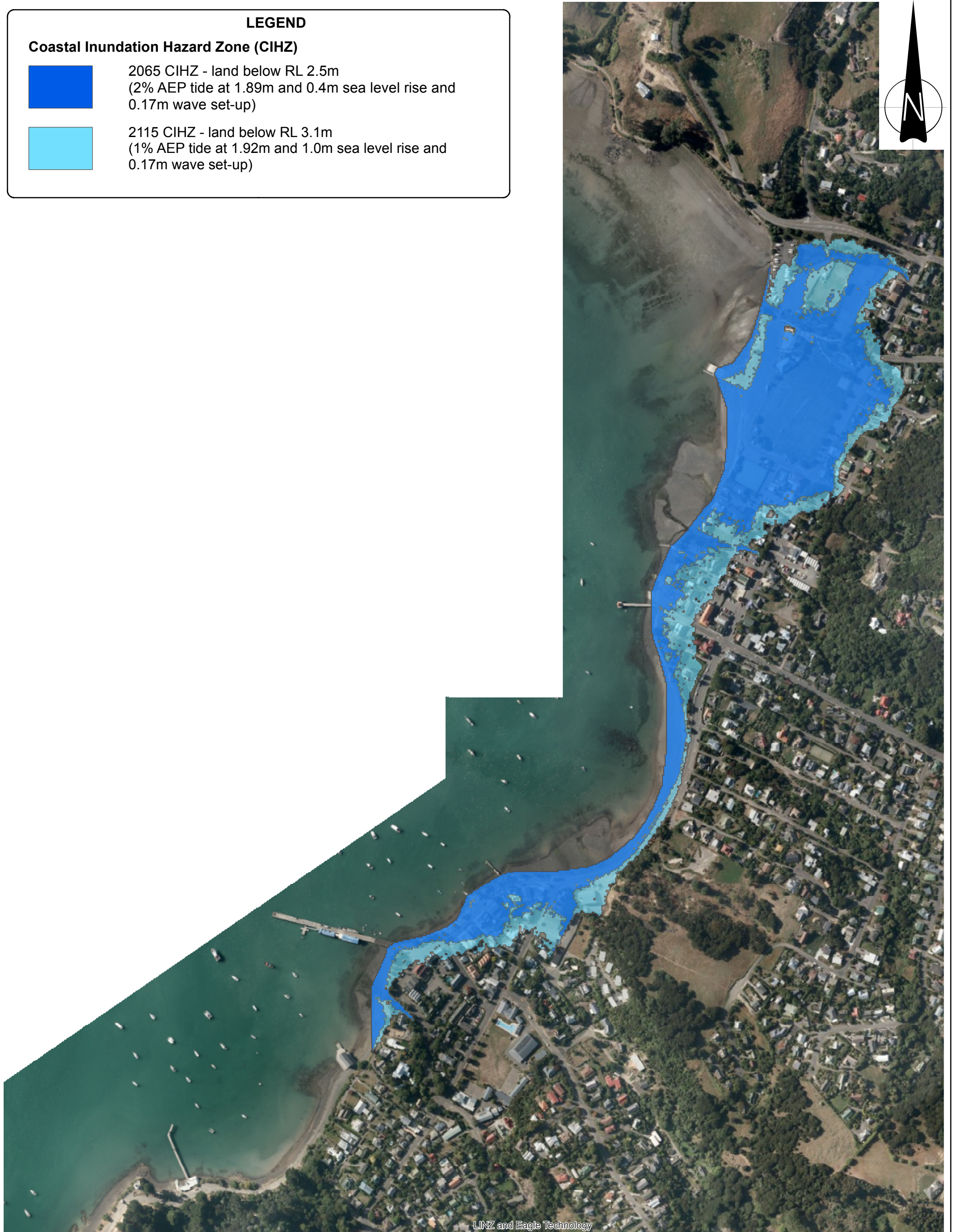
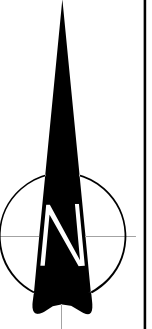
Coastal Inundation Hazard Zone (CIHZ)



2065 CIHZ - land below RL 2.5m
(2% AEP tide at 1.89m and 0.4m sea level rise and 0.17m wave set-up)

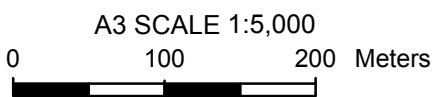


2115 CIHZ - land below RL 3.1m
(1% AEP tide at 1.92m and 1.0m sea level rise and 0.17m wave set-up)



LINZ and Eagle Technology

Notes: Aerial photograph supplied by LINZ and Eagle Technology



Tonkin & Taylor
Environmental and Engineering Consultants
Level 1, 525 Cameron Road, Tauranga
www.tonkin.co.nz

DRAWN	MCI	Apr.15
CHECKED		
APPROVED		
ARCFILE Akaroa_CIHZ_R2.mxd		
SCALE (AT A3 SIZE) 1:5,000		
PROJECT No. 851857.001		

**CHRISTCHURCH CITY COUNCIL
COASTAL HAZARD ASSESSMENT
AKAROA
Coastal Inundation Hazard Zone**

FIGURE No. Appendix E 6.

Rev. 2

LEGEND

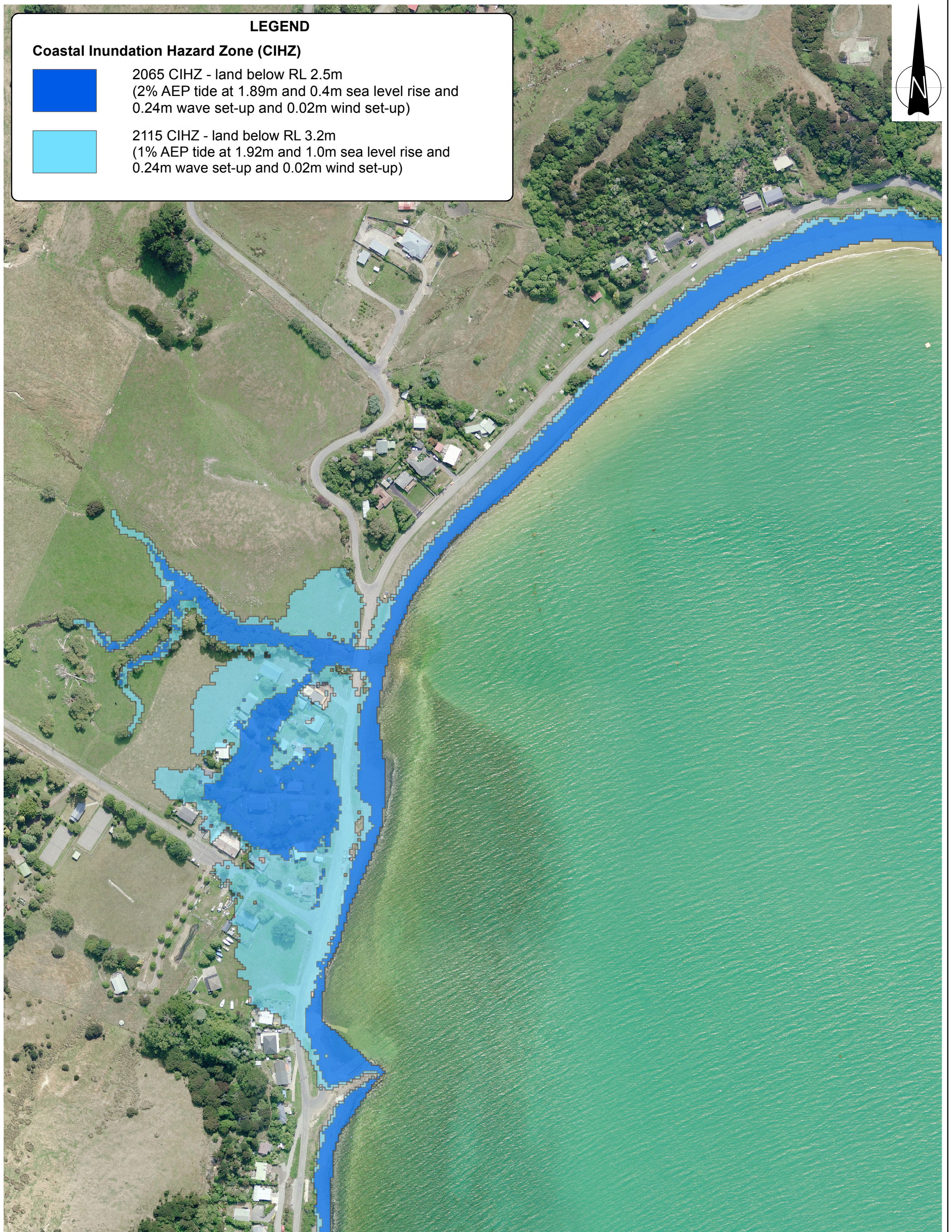
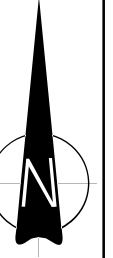
Coastal Inundation Hazard Zone (CIHZ)



2065 CIHZ - land below RL 2.5m
(2% AEP tide at 1.89m and 0.4m sea level rise and 0.24m wave set-up and 0.02m wind set-up)

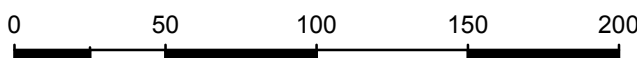


2115 CIHZ - land below RL 3.2m
(1% AEP tide at 1.92m and 1.0m sea level rise and 0.24m wave set-up and 0.02m wind set-up)



Notes: Aerial photograph supplied by LINZ and Eagle Technology

A3 SCALE 1:2,500



Tonkin & Taylor
Environmental and Engineering Consultants
Level 1, 525 Cameron Road, Tauranga
www.tonkin.co.nz

DRAWN	MCI	Apr.15
CHECKED		
APPROVED		
ARCFILE Wainui_CIHZ_R2.mxd		
SCALE (AT A3 SIZE) 1:2,500		
PROJECT No. 851857.001		

CHRISTCHURCH CITY COUNCIL
COASTAL HAZARD ASSESSMENT
WAINUI
Coastal Inundation Hazard Zone

FIGURE No.
Appendix E 7.

Rev.
2