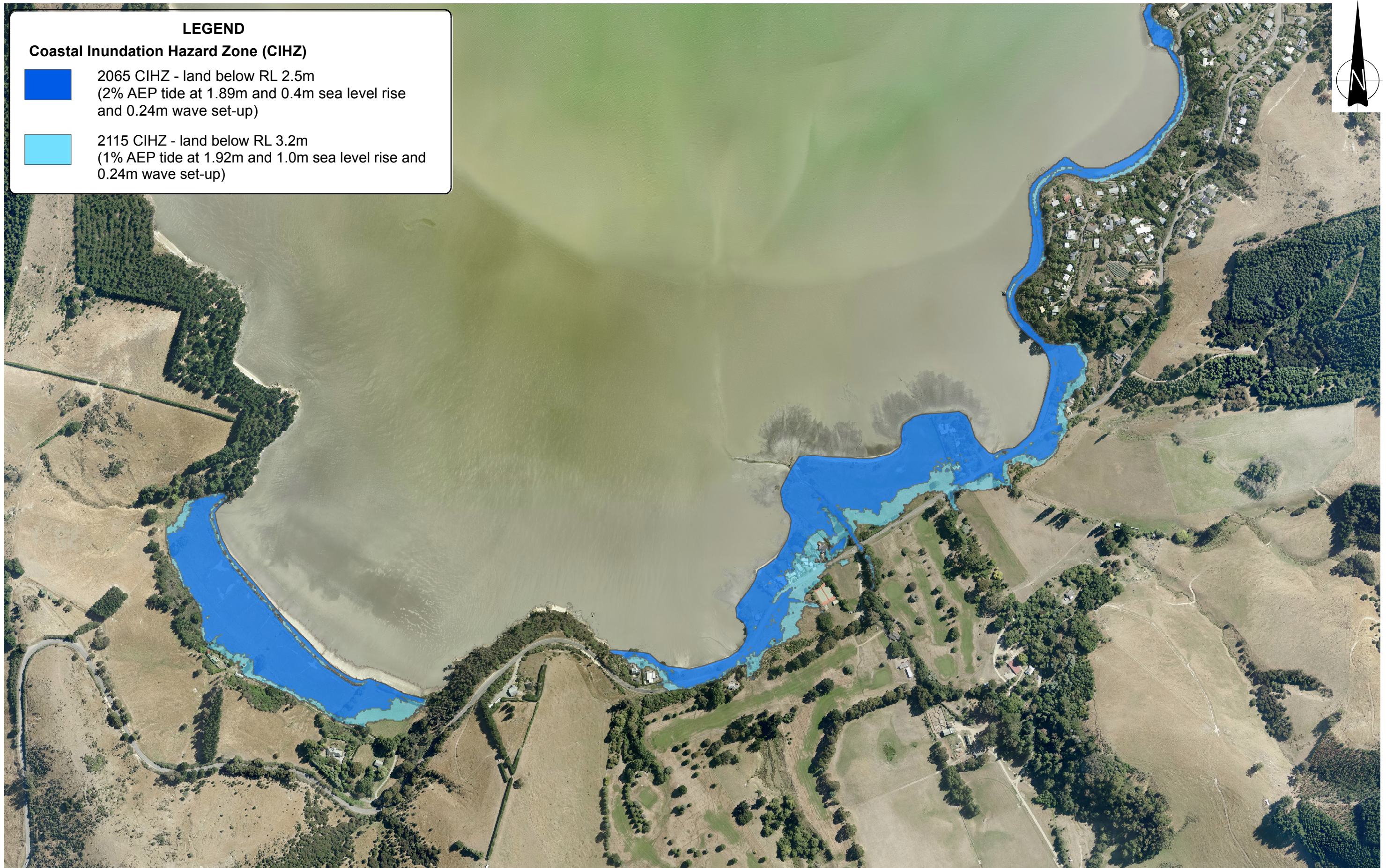


**LEGEND**

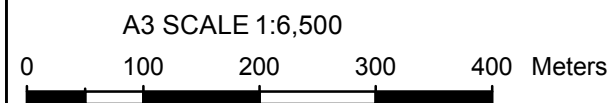
**Coastal Inundation Hazard Zone (CIHZ)**

- 2065 CIHZ - land below RL 2.5m  
(2% AEP tide at 1.89m and 0.4m sea level rise and 0.24m wave set-up)
  
- 2115 CIHZ - land below RL 3.2m  
(1% AEP tide at 1.92m and 1.0m sea level rise and 0.24m wave set-up)



Path: T:\Tauranga\Projects\851857\001\WorkingMaterial\GIS\MapDocuments\CIHZ\150422\_Revision2\Charteris\_CIHZ\_R2.mxd Date: 23/04/2015 Time: 9:52:38 a.m.

Notes: Aerial photograph supplied by LINZ and Eagle Technology




**Tonkin & Taylor**  
Environmental and Engineering Consultants  
Level 1, 525 Cameron Road, Tauranga  
www.tonkin.co.nz

DRAWN	MCI	Apr.15
CHECKED		
APPROVED		
ARCFILE Charteris.CIHZ_R2.mxd		
SCALE (AT A3 SIZE) 1:6,500		
PROJECT No.	851857.001	

**CHRISTCHURCH CITY COUNCIL**  
**COASTAL HAZARD ASSESSMENT**  
Charteris Bay  
Coastal Inundation Hazard Zone

FIGURE No.  
Appendix E 4.

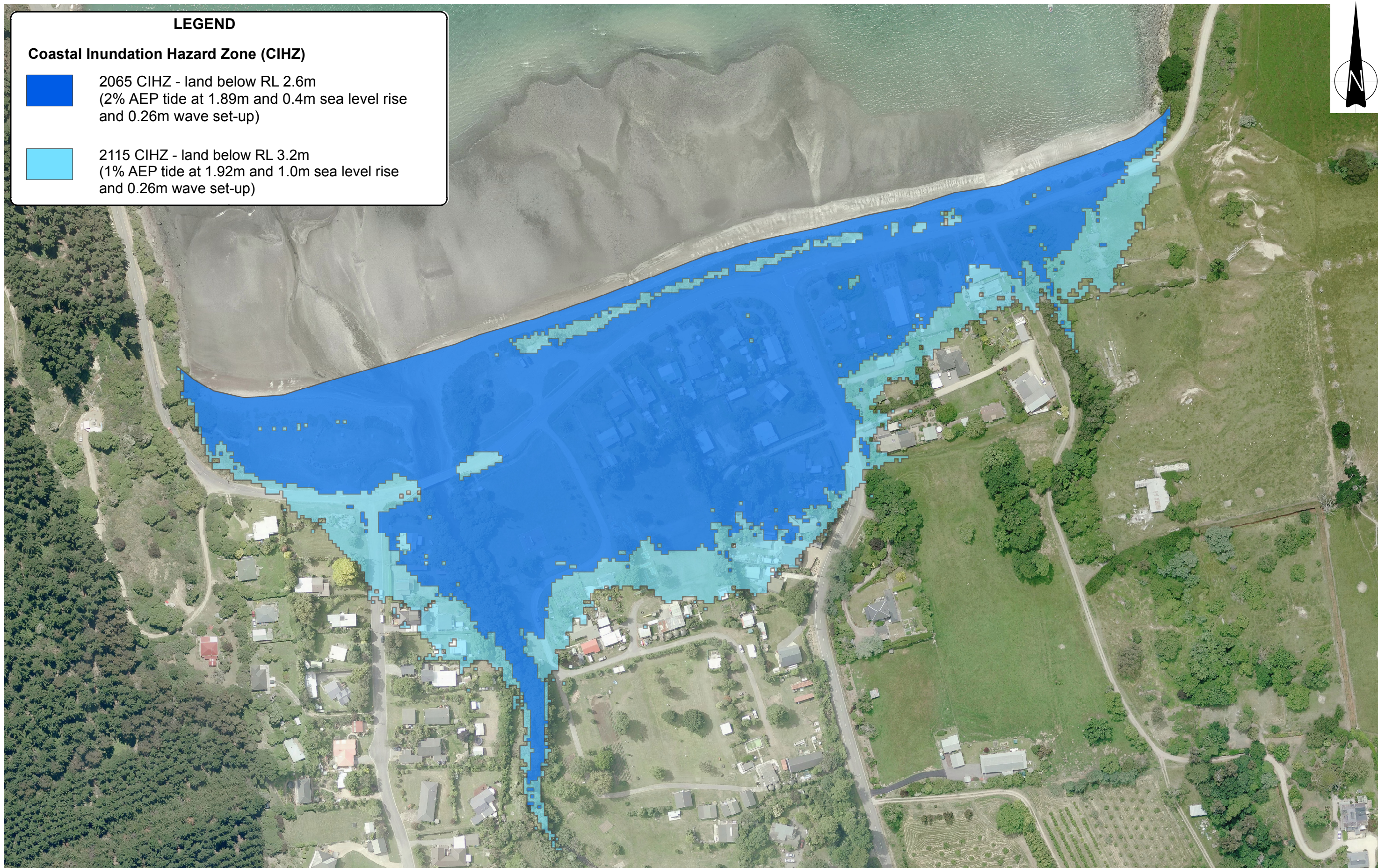
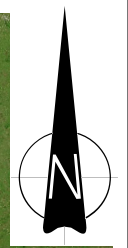
Rev. 2



**LEGEND**

**Coastal Inundation Hazard Zone (CIHZ)**

- 2065 CIHZ - land below RL 2.6m  
(2% AEP tide at 1.89m and 0.4m sea level rise and 0.26m wave set-up)
  
- 2115 CIHZ - land below RL 3.2m  
(1% AEP tide at 1.92m and 1.0m sea level rise and 0.26m wave set-up)



Notes: Aerial photograph supplied by LINZ and Eagle Technology

A3 SCALE 1:2,000



  
**Tonkin & Taylor**  
 Environmental and Engineering Consultants  
 Level 1, 525 Cameron Road, Tauranga  
[www.tonkin.co.nz](http://www.tonkin.co.nz)

DRAWN	MCI	Apr.15
CHECKED		
APPROVED		
ARCFILE Purau.CIHZ_R2.mxd		
SCALE (AT A3 SIZE) 1:2,000		
PROJECT No.	851857.001	

**CHRISTCHURCH CITY COUNCIL**  
**COASTAL HAZARD ASSESSMENT**  
 Purau  
 Coastal Inundation Hazard Zone

FIGURE No.  
Appendix E 5.

Path: T:\Tauranga\Projects\851857\851857\_001\WorkingMaterial\GIS\MapDocuments\CIHZ\150422\_Revision2\Purau.CIHZ\_R2.mxd Date: 23/04/2015 Time: 9:56:38 a.m.