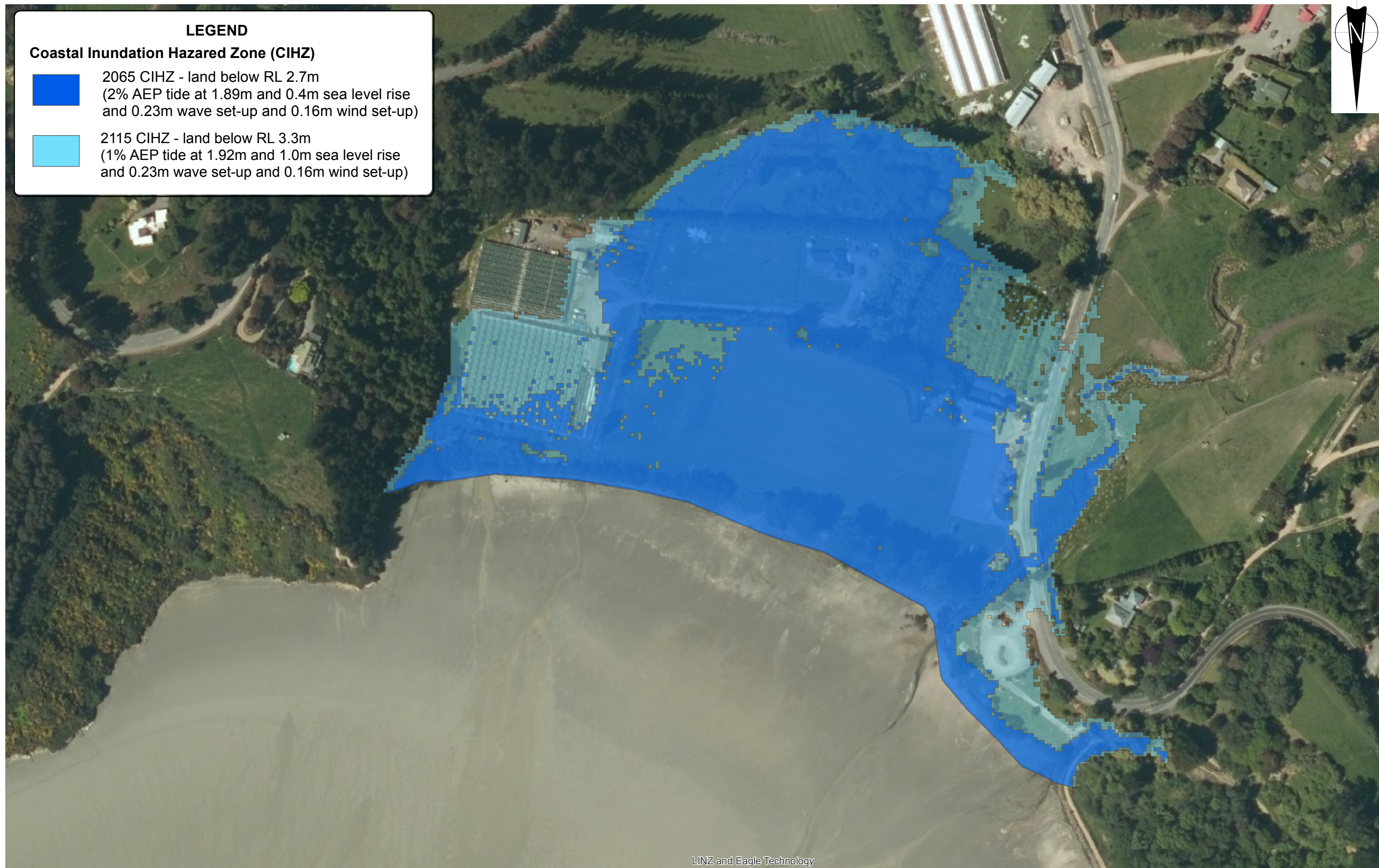




LEGEND

Coastal Inundation Hazared Zone (CIHZ)

- 2065 CIHZ - land below RL 2.7m
(2% AEP tide at 1.89m and 0.4m sea level rise and 0.23m wave set-up and 0.16m wind set-up)
- 2115 CIHZ - land below RL 3.3m
(1% AEP tide at 1.92m and 1.0m sea level rise and 0.23m wave set-up and 0.16m wind set-up)



LINZ and Eagle Technology

Notes: Aerial photograph supplied by LINZ and Eagle Technology

A3 SCALE 1:2,000



TT
Tonkin & Taylor
 Environmental and Engineering Consultants
 Level 1, 525 Cameron Road, Tauranga
 www.tonkin.co.nz

DRAWN	MCI	Apr.15
CHECKED		
APPROVED		
ARCFILE	Alandale.CIHZ_R2.mxd	
SCALE (AT A3 SIZE)	1:2,000	
PROJECT No.	851857.001	

CHRISTCHURCH CITY COUNCIL
COASTAL HAZARD ASSESSMENT
 Alandale
 Coastal Inundation Hazard Zone

FIGURE No. Appendix E 2.

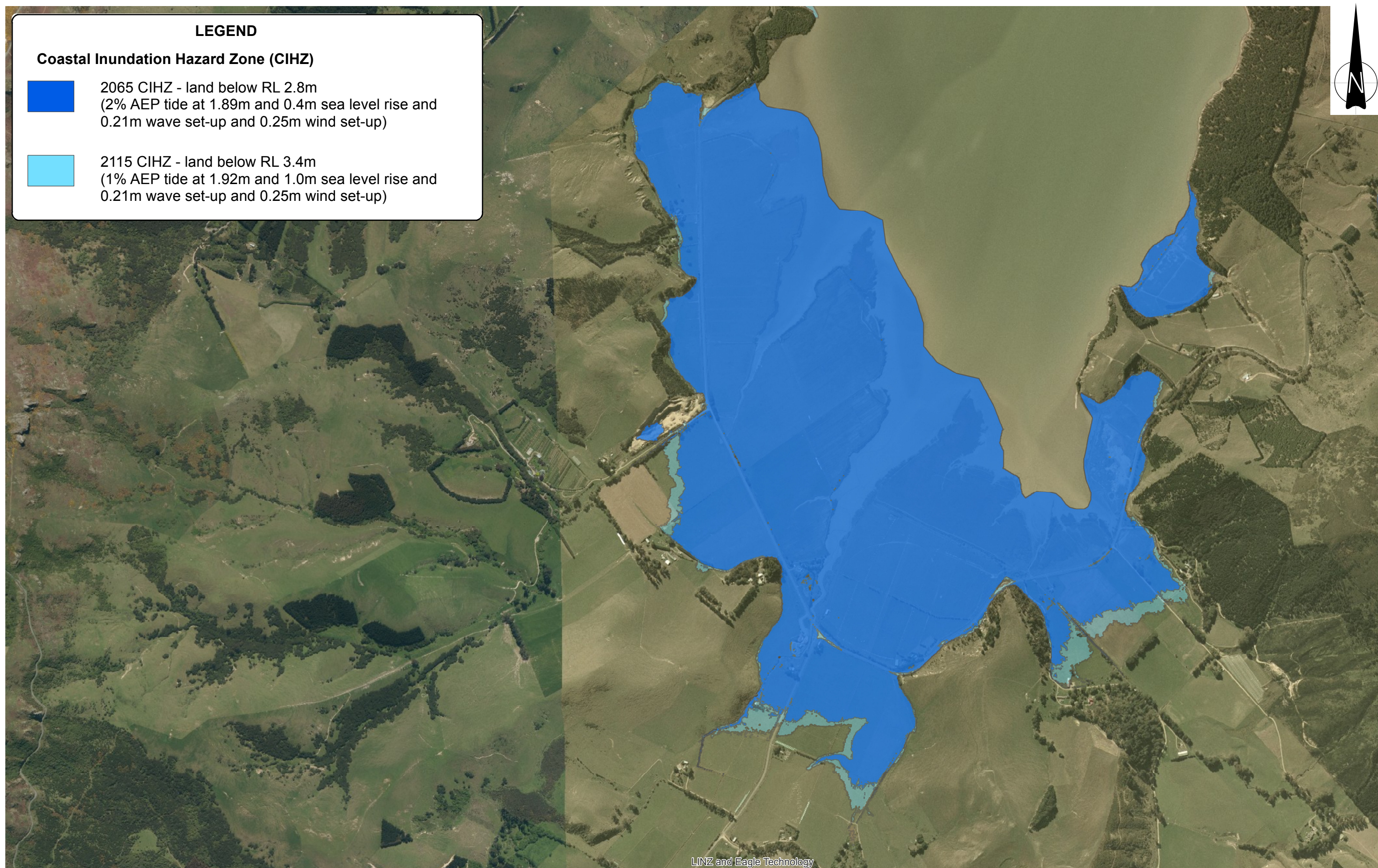
Rev. 2

LEGEND

Coastal Inundation Hazard Zone (CIHZ)

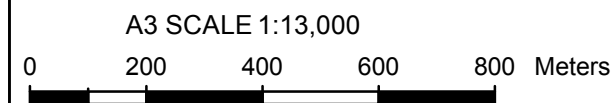
- 2065 CIHZ - land below RL 2.8m
(2% AEP tide at 1.89m and 0.4m sea level rise and 0.21m wave set-up and 0.25m wind set-up)

- 2115 CIHZ - land below RL 3.4m
(1% AEP tide at 1.92m and 1.0m sea level rise and 0.21m wave set-up and 0.25m wind set-up)



LINZ and Eagle Technology

Notes: Aerial photograph supplied by LINZ and Eagle Technology



Tonkin & Taylor
Environmental and Engineering Consultants
Level 1, 525 Cameron Road, Tauranga
www.tonkin.co.nz

DRAWN	MCI	Apr.15
CHECKED		
APPROVED		
ARCFILE Teddington.CIHZ_R2.mxd SCALE (AT A3 SIZE)		
1:13,000		
PROJECT No.	851857.001	

CHRISTCHURCH CITY COUNCIL
COASTAL HAZARD ASSESSMENT
Teddington
Coastal Inundation Hazard Zone

FIGURE No. Appendix E 3. Rev. 2