

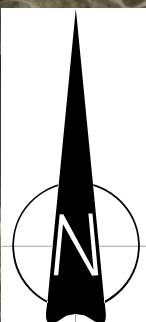


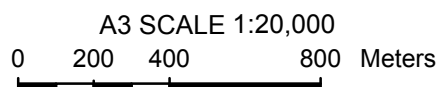
LEGEND

Coastal Inundation Hazard Zone (CIHZ)

	2065 CIHZ - land below RL 2.6m maximum (2% AEP tide at 1.8m and 0.4m sea level rise with 0.4m freeboard)
	2115 CIHZ - land below RL 3.3m maximum (1% AEP tide at 1.85m and 1.0m sea level rise with 0.4m freeboard)



Notes: Aerial photograph supplied by LINZ.
Levels in legend are a maximum and reduce inland based on TUFLOW model results.

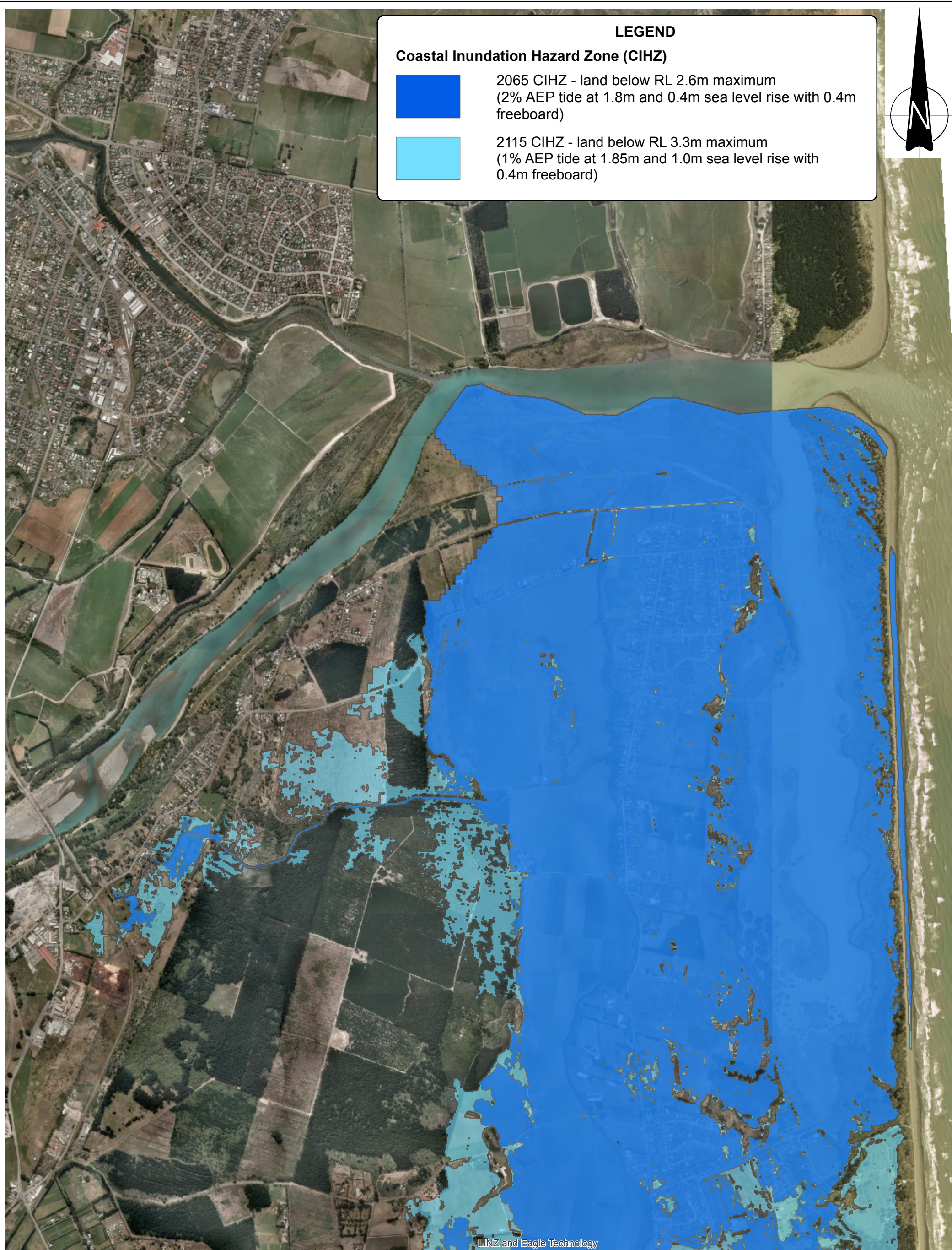


TT
Tonkin & Taylor
Environmental and Engineering Consultants
Level 1, 525 Cameron Road, Tauranga
www.tonkin.co.nz

DRAWN	MCI	Apr.15
CHECKED		
APPROVED		
ARCFILE Brooklands1_CIHZ_R2.mxd		
SCALE (AT A3 SIZE) 1:20,000		
PROJECT No.	851857.001	

CHRISTCHURCH CITY COUNCIL
COASTAL HAZARD ASSESSMENT
Brooklands (Section 1)
Coastal Inundation Hazard Zone

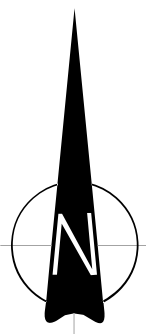
FIGURE No. Appendix E 13.



LEGEND

Coastal Inundation Hazard Zone (CIHZ)

- 2065 CIHZ - land below RL 2.6m maximum (2% AEP tide at 1.8m and 0.4m sea level rise with 0.4m freeboard)
- 2115 CIHZ - land below RL 3.3m maximum (1% AEP tide at 1.85m and 1.0m sea level rise with 0.4m freeboard)



LINZ and Eagle Technology

Notes: Aerial photograph supplied by LINZ.
Levels in legend are a maximum and reduce inland based on TUFLOW model results.

A3 SCALE 1:20,000
0 200 400 800 Meters

TT
Tonkin & Taylor
Environmental and Engineering Consultants
Level 1, 525 Cameron Road, Tauranga
www.tonkin.co.nz

DRAWN	MCI	Apr.15
CHECKED		
APPROVED		
ARCFILE Brooklands2_CIHZ_R2.mxd		
SCALE (AT A3 SIZE) 1:20,000		
PROJECT No.	851857.001	

CHRISTCHURCH CITY COUNCIL
COASTAL HAZARD ASSESSMENT
Brooklands (Section 2)
Coastal Inundation Hazard Zone

FIGURE No.
Appendix E 14.

Rev. 2