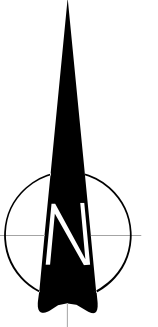


**LEGEND**

**Coastal Inundation Hazard Zone (CIHZ)**

	2065 CIHZ - land below RL 2.6m maximum (2% AEP tide at 1.8m and 0.4m sea level rise with 0.4m freeboard)
	2115 CIHZ - land below RL 3.3m maximum (1% AEP tide at 1.85m and 1.0m sea level rise with 0.4m freeboard)



Notes: Aerial photograph supplied by LINZ.  
Levels in legend are a maximum and reduce inland based on TUFLOW model results.

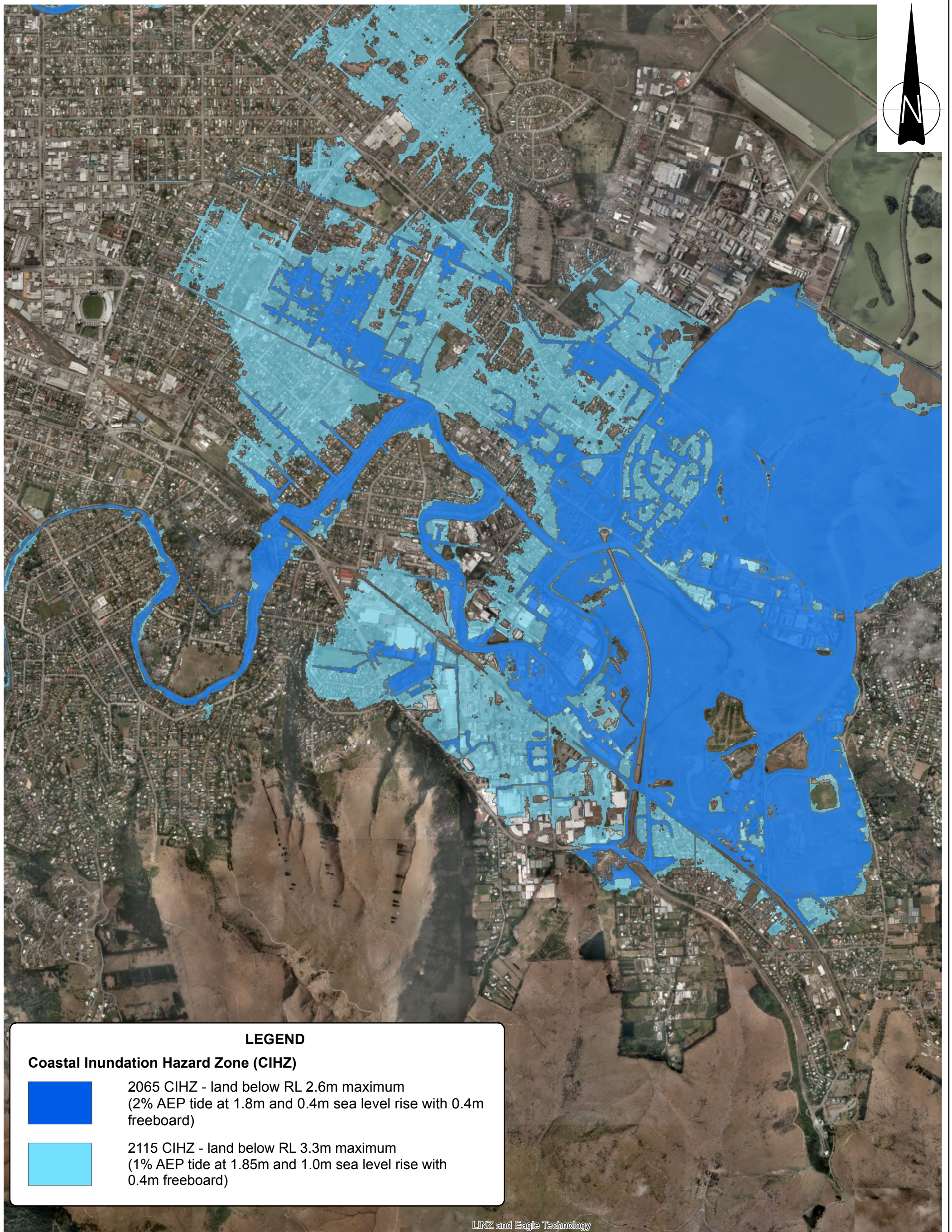
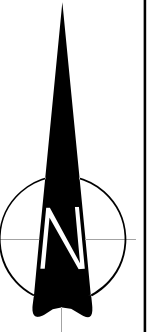
A3 SCALE 1:20,000

0 200 400 800 Meters

  
**Tonkin & Taylor**  
 Environmental and Engineering Consultants  
 Level 1, 525 Cameron Road, Tauranga  
[www.tonkin.co.nz](http://www.tonkin.co.nz)



DRAWN	MCI	Apr.15
CHECKED		
APPROVED		
ARCFILE		
AH1_CIHZ_R2.mxd		
SCALE (AT A3 SIZE)		
1:20,000		
PROJECT No.		
851857.001		

**CHRISTCHURCH CITY COUNCIL**  
**COASTAL HAZARD ASSESSMENT**  
**Avon - Heathcote Estuary (Section 1)**  
**Coastal Inundation Hazard Zone**



**LEGEND**

**Coastal Inundation Hazard Zone (CIHZ)**

-  2065 CIHZ - land below RL 2.6m maximum (2% AEP tide at 1.8m and 0.4m sea level rise with 0.4m freeboard)
-  2115 CIHZ - land below RL 3.3m maximum (1% AEP tide at 1.85m and 1.0m sea level rise with 0.4m freeboard)

LINZ and Eagle Technology

Notes: Aerial photograph supplied by LINZ.  
Levels in legend are a maximum and reduce inland based on TUFLOW model results.

A3 SCALE 1:20,000

0 200 400 800 Meters




**Tonkin & Taylor**  
Environmental and Engineering Consultants  
Level 1, 525 Cameron Road, Tauranga  
www.tonkin.co.nz

DRAWN	MCI	Apr.15
CHECKED		
APPROVED		
ARCFILE AH2_CIHZ_R2.mxd		
SCALE (AT A3 SIZE) 1:20,000		
PROJECT No. 851857.001		


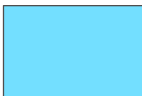
**CHRISTCHURCH CITY COUNCIL  
COASTAL HAZARD ASSESSMENT  
Avon - Heathcote Estuary (Section 2)  
Coastal Inundation Hazard Zone**

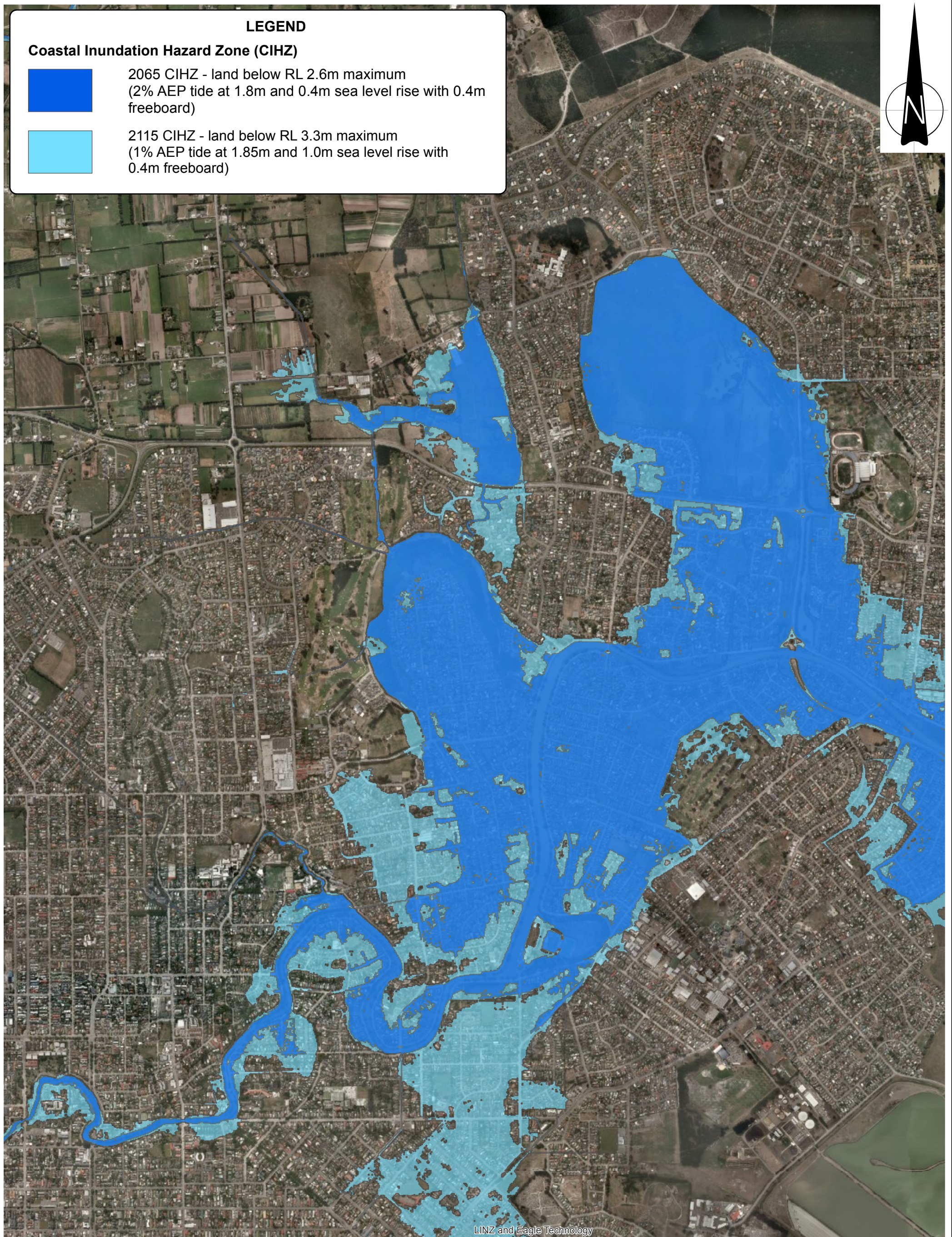
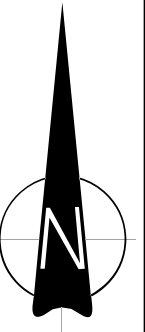
FIGURE No.  
Appendix E 11.

Rev. 2

**LEGEND**

**Coastal Inundation Hazard Zone (CIHZ)**

-  2065 CIHZ - land below RL 2.6m maximum  
(2% AEP tide at 1.8m and 0.4m sea level rise with 0.4m freeboard)
-  2115 CIHZ - land below RL 3.3m maximum  
(1% AEP tide at 1.85m and 1.0m sea level rise with 0.4m freeboard)



Notes: Aerial photograph supplied by LINZ.  
Levels in legend are a maximum and reduce inland based on TUFLOW model results.

A3 SCALE 1:20,000

0 200 400 800 Meters




**Tonkin & Taylor**  
Environmental and Engineering Consultants  
Level 1, 525 Cameron Road, Tauranga  
www.tonkin.co.nz

DRAWN	MCI	Apr.15
CHECKED		
APPROVED		
ARCFILE AH3_CIHZ_R2.mxd		
SCALE (AT A3 SIZE) 1:20,000		
PROJECT No.	851857.001	

**CHRISTCHURCH CITY COUNCIL  
COASTAL HAZARD ASSESSMENT  
Avon - Heathcote Estuary (Section 3)  
Coastal Inundation Hazard Zone**

FIGURE No.  
Appendix E 12.

Rev. 2