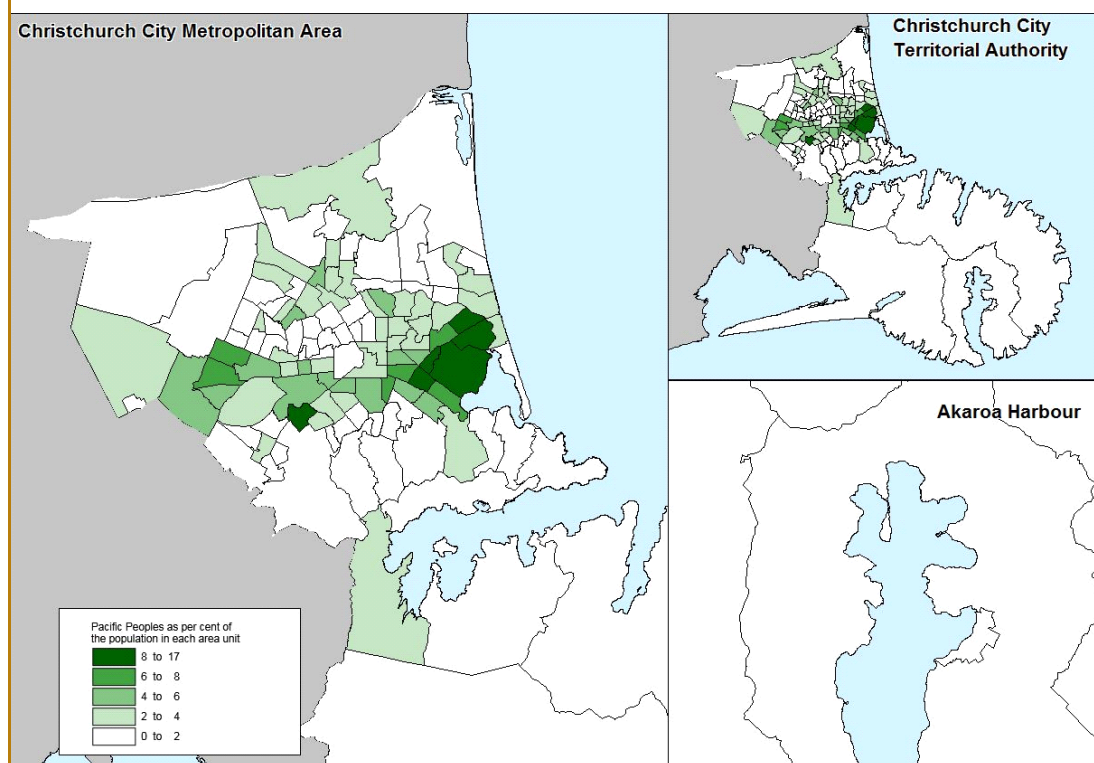


## Ethnic Groups

## Population Belonging to the Pacific Peoples Ethnic Group by Area Unit, 2013



Source: Statistics New Zealand: Census of Population and Dwellings.

## Key Points:

- Christchurch has a small but increasing Pacific Peoples community. In 2013, the Pacific Peoples ethnic group comprised 3.1 per cent of the population (10,104) compared with 1.7 per cent (5,292) in 1991.
- Areas in the City with the highest proportions of Pacific Peoples are mainly in the east of the City and include: Aranui, Bromley, East Linwood, Woolston West and Bexley.
- In addition, Hillmorton to the south west of the City has a high concentration of Pacific Peoples.
- Areas with the lowest proportions of Pacific Peoples tend to be located to the south of the City, particularly in and around the Port Hills and Banks Peninsula. Areas to the north-west and north-east of the City also have lower proportions.

## What is this about?

This map shows the locations of people who identify with the Pacific Peoples ethnic group by area unit (suburbs) in Christchurch City. The Pacific Peoples ethnic group includes those who identify as being Samoan, Tongan, Cook Islander, Fijian and Niuean.

Factors such as age, sex and ethnicity are key components of the population that may be relevant to a wide range of issues. This information may be useful in helping decision makers develop an understanding of the changing needs of the community and anticipate potential pressures on the wider environment.

## Data limitations:

Percentages are calculated as a percentage of those people who responded to the ethnicity question in the Census (total people stated). This will be a smaller number than the total usually resident population.

People can identify with more than one ethnicity therefore the percentages in a particular geographic area for all ethnic groups may add up to over 100 per cent. This map shows the proportion of the Pacific Peoples ethnic group in each area unit as a percentage of the total people stated. It does not show the total number of people of the Pacific Peoples ethnic group, rather it shows the areas of the City that have higher or lower proportions of this ethnic group.

"Ethnicity is the ethnic group or groups a person identifies with or has a sense of belonging to. It is a measure of cultural affiliation (in contrast to race, ancestry, nationality, or citizenship). Ethnicity is self-perceived and a person can belong to more than one ethnic group.", (Statistics New Zealand, 'Definitions and Forms', 2013).

## Related topics:

- Quality of Life
- Social Cohesion
- Council decision making
- Population structure