

# Harewood Ward

## Community Profile

April 2025



*Lake Roto Kohatu*



# Contents

Ward Area Overview.....	3
Facts and Figures.....	4
Community Infrastructure.....	5
*Socio-economic Deprivation Index.....	6
Strengthening Communities Together Strategy	
○ People.....	7
○ Place.....	8
○ Participation.....	9
○ Preparedness.....	10
Key Community Issues.....	11



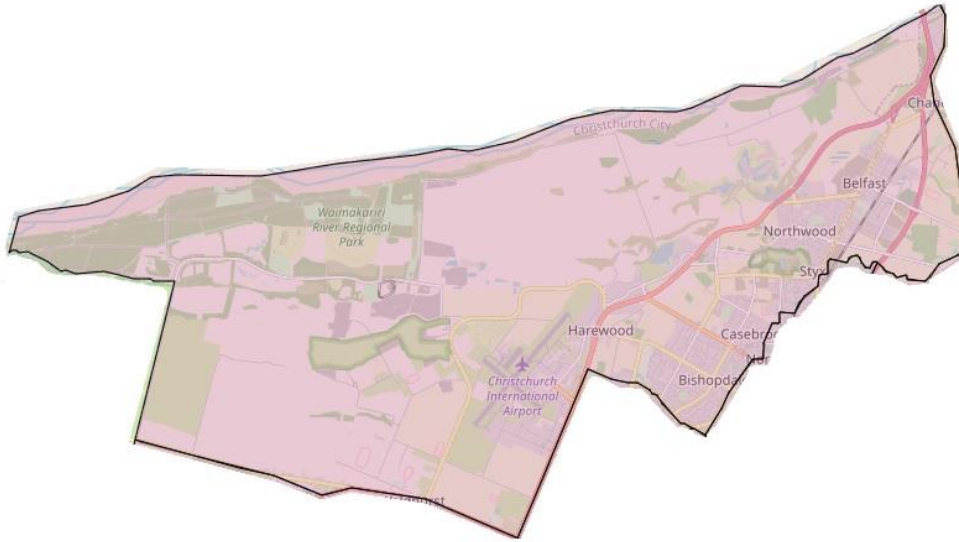
*Elephant slide, Bishopdale Park*

*Profiles compiled by the Community Support and Partnerships Unit, Christchurch City Council*

**\*New Zealand Index of Deprivation (NZDep)**

The NZDep is an area-based measure of socioeconomic deprivation in Aotearoa New Zealand created by Otago University. It measures the level of deprivation for people in each small area. It is based on nine Census variables. To read more about the variables used and view maps in more detail, visit <http://www.ehinz.ac.nz/indicators/population-vulnerability/socioeconomic-deprivation-profile/>

# Ward Area Overview



Ōrauwhata Bishopdale Library and Community Centre

The Harewood Ward includes the suburbs of Bishopdale, Harewood, Northwood, Belfast and portions of both Casebrook and Yaldhurst.

Geographically the Harewood ward is one of the largest wards and has around 25,470 people in it with the main ethnicity being European (80 per cent). This is an increase of approximately 6,500 people from the last census. Belfast is one of the fastest growing areas with many housing development projects underway.

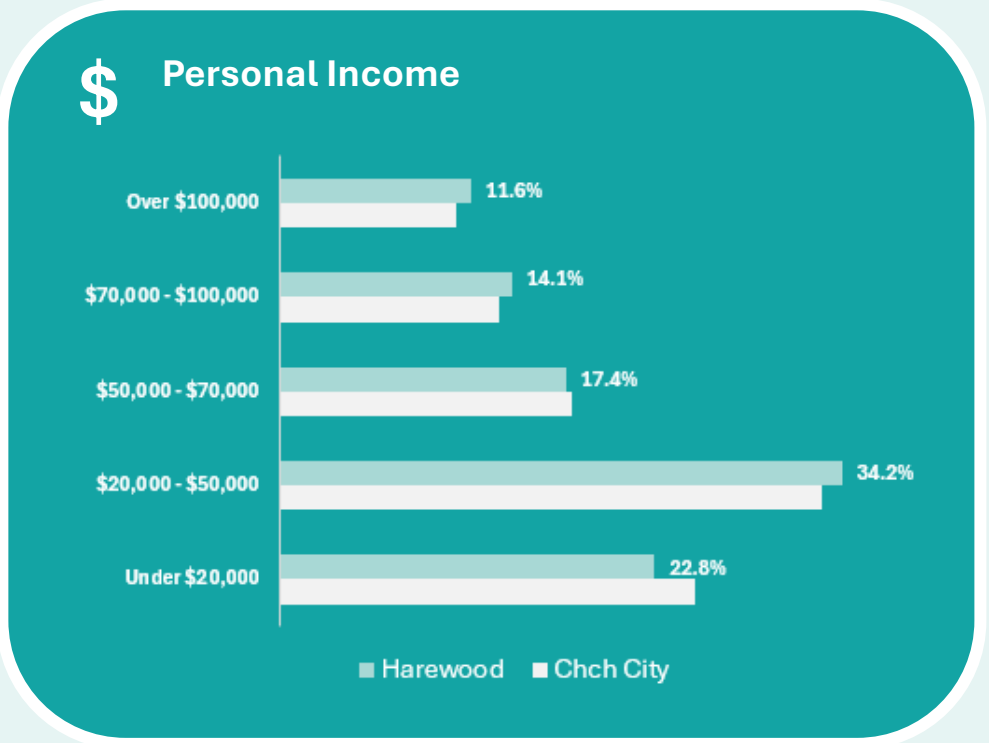
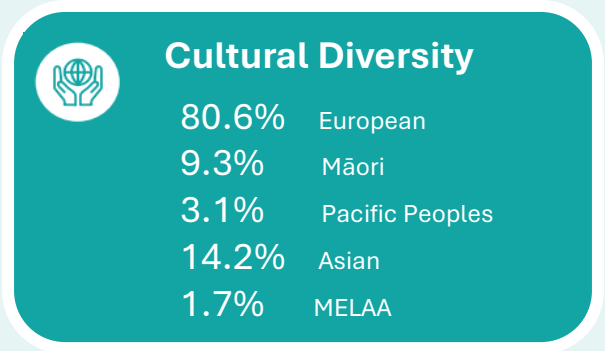
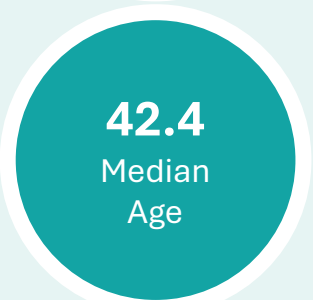
Harewood is a major transport hub for Christchurch and the South Island. State Highway One runs through the middle of the ward and the Christchurch International Airport is located in it. Because of the close proximity to the airport and State Highway One, the Harewood Ward is also home to many freight and other industrial businesses and tourist attractions such as Willowbank Wildlife Reserve (Wildlife Park and nature reserve), Orana Park (New Zealand's only open range zoo) and The International Antarctic Centre.

It also has many natural features with Wetlands and native vegetation, including the Waimakariri River Regional Park, The Groyne, Styx Mill Conservation Reserve and Lake Roto Kohatu. Lake Roto Kohatu is the only freshwater lake area in Christchurch and is well utilised by businesses and community alike. McLeans Island is another key place in the ward providing a large number of recreational spaces and activities. Many people also know Bishopdale Park but often call it the Elephant Park because of the elephant slide at the playground.

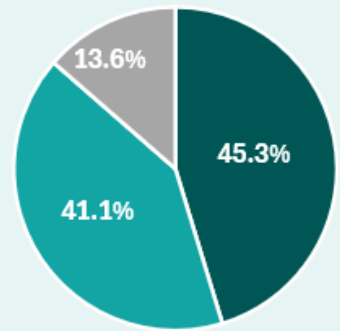
The Harewood Ward is a unique combination of industry, residences and lots of natural space and parks throughout.

# Facts and Figures

Harewood Ward 2023 Census



## Family Type



- Couple without Children
- Couple with Child(ren)
- One Parent with Child(ren)

## Businesses

Approximately  
**3,111** businesses  
employing  
**18,354** people  
(Feb 2024)

# Community Infrastructure



3

Community development/support organisations

66

Sport/recreation groups

8

Faith-based organisations

10

Schools

25

Community-owned facilities

2

Council-owned facilities

3

Residents' Associations

1

Council library

## Facilities and Amenities

- 1 Council library: Ōrauwhata Bishopdale Library
- 1 Council Community Centre: Bishopdale
- 3 shopping centres: Bishopdale Mall, Spitfire Square (airport), Northwood Supa Centre
- 10 schools: 6 Primary - Belfast, Bishopdale (has two sites), Cotswold, Harewood, Isleworth, Yaldhurst Model ; 2 Intermediate - Breens, Casebrook; 1 Primary/Middle school (Year 1-10) - Emmanuel Christian
- 1 charity hospital: Canterbury Charity Hospital
- Approximately 3,111 businesses employing 18,354 people (Feb 2023)
- Major sports and recreation amenities include: McLeans Island, Christchurch Football Academy, The Groynes, Lake Roto Kohatu, Nunweek Park, Bishopdale Park

With an industrial area and the airport, the Harewood Ward has 3,111 businesses. It has a higher number of employees associated with each business, approximately six employees per business (18,354 in total). This is the fourth highest number across the wards (excluding Central City).

There has been an increase of around 2,000 more people employed in the area than in the last census. But there has been no change in the percentage of people employed fulltime since 2018, still sitting at 50 per cent. There were 33.5 per cent not in the workforce and around 21 per cent of the population are over the age of 65.

There are three shopping malls, Spitfire Square (Christchurch Airport's own retail precinct), Bishopdale Mall and Northwood Supa Centre. There are smaller shopping centres dotted around the ward.

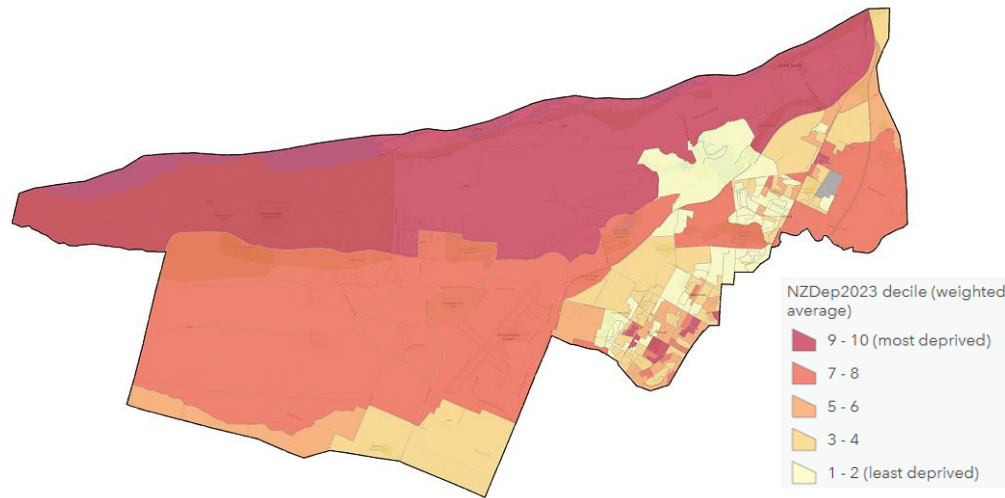
There are a good range of housing options across the area from social housing to private and investment properties. Belfast is continuing to see ongoing developments with an additional school site and many housing projects underway.

The Library is very community focused hosting groups and activities. The community centre is well utilised being a large hall with separate kitchen. It is bookable through the Council.

Ouruhia Hall is a Council owned facility on the outskirts of the ward but managed by the community. It is popular for 21<sup>st</sup> birthdays and weddings and has outdoor appeal backing onto Ouruhia Domain.



# Socio-economic Deprivation Index



The scale of deprivation ranges from 1 to 10:

- 1 represents the areas with the least deprived scores.
- 10 represents the areas with the most deprived scores.

Relative to the rest of Christchurch City, Harewood Ward residents were living in less deprived areas overall.

In the Harewood Ward, around 6 per cent of the population lived in the 'most deprived' areas (i.e. deciles 9 and 10), compared with 16 per cent of all of Christchurch City's population.

Around 30 per cent of this ward's population lived in the 'least deprived' areas (i.e. deciles 1 and 2), compared with 22 per cent of all of Christchurch City's population.

The map above shows large areas of deprivation but by in large these areas do not have people living in them. The percentage breakdown is a more accurate representation.

Average incomes across the suburbs of the ward range from \$35,800 to \$45,300 which is around \$5,000 either side of the Christchurch City average of \$40,400. More higher income earners tended to live in Northwood, but they also had high numbers of lower income earners as well, which levelled the average out. This is possibly due to the larger number of over 65's who live in the area (20.9 per cent compared to Christchurch City 16.30 per cent).

There are 97 social housing units managed by the Ōtautahi Community Housing Trust and 648 Kāinga Ora (formerly Housing New Zealand) owned properties in this area.

In February 2025, according to the Tenancy Services Website, the average market price of rental property in the suburbs of Harewood rose from \$585 in 2023 to \$600 in 2025. In Bishopdale (the highest deprivation area) the average market rental went from \$520 per week in February 2023 to \$590 per week in February 2025.

Many homes have some form of ownership in part or are fully owned privately. The four main suburb house prices, for the 12-month period of February 2024 to February 2025, averaged at : Bishopdale - \$685,000, Belfast - \$707,000, Northwood - \$866,000, Harewood - \$867,500, again reflecting the deprivation index. ([realestate.co.nz](https://www.realestate.co.nz))

# Strengthening Communities Together Strategy

This section of the Community Profile provides a narrative of the ward in relation to the four Pillars of the strategy. You can view the full strategy document on the Council's website by clicking [here](#).



## Te Pou Tua Tahi: Te Tāngata

### Pillar 1: People

The city actively promotes a culture of equity by valuing diversity and fostering inclusion across communities and generations.



*Bishopdale Community Trust stall at Celebrate Bishopdale event*

There are a number of community organisations providing a range of support in the ward area.

The Belfast Community Network connects and supports organisations and delivers a range of activities for youth and older adults.

The Bishopdale Community Trust operate a drop-in centre on Farrington Avenue. They maintain the online Bishopdale directory and produce the Bishopdale bulletin, community newsletter. New projects include a parent support group, Parenting Neuro Diverse Children (POND), and a weekly computer and phone technical support session.

St Margaret's Presbyterian Church host community activities and groups and are looking to get more involved in the community and with schools.

Belfast School has seen the completion of its second site, catering to the older primary school students, and have hit the ground running from the two sites. They are involved in the wider community and developments and lease the Belfast Community Pool for school and community use.

Wai-Ora Trust was established in 1981 and is dedicated to the restoration of people and the environment. They operate a social enterprise, Wai-Ora Group, employing staff and offering

opportunities to marginalised members of the community.

Profits from the social enterprise go into their social programmes. These include: work-skills, health and social service programmes for individuals, family and community groups, community vegetable plots, landscaping city parks and reserves, a Fitness Centre, a ground maintenance team, community education for environmental, cultural, and spiritual advancement, weekly community lunches, mentoring and men's camps.

The Norwest Sport and Community Hub Incorporated is a new sport, recreation, and community focused organisation wanting, "To give residents of North-West Christchurch access to quality shared and multi-user facilities, recreation, community and social activities and services." Founding members are six sporting clubs covering football, rugby, netball, and bowls, and includes The Kind Foundation (YMCA) as a partner organisation. In 2025 their membership base was approximately 2,000 people.

The Kind Foundation at Bishopdale Mall is well utilised providing recreational opportunities for all ages including afterschool activities for youth and an early learning centre.



## Te Pou Tua Rua: Te Whenua

### Pillar 2: Place

We support and help build connections between communities and their places and spaces to foster a sense of local identity, shared experience and stewardship.



Walkway at the Groyne

The Pillars of People and Place are often intertwined, and the Styx Living Laboratory Trust (SLLT) is another good example of this. They are a local river care group, running since 2001 with the purpose of developing learning and research in the Pūharakekenui (Styx) River catchment. The group advocate for maintaining water quality, drainage, ecology, landscape, culture, heritage, and recreation, in the river. Along with community planting days and research, in partnership with the Kahukura Rongoā Māori Trust, the Styx Living Laboratory Trust offer free wildlife and cultural education days and school programmes.

There are many reserves and parks in the Harewood Ward that link people to the land and community.

Tulett Park is home to the Nomads Football Club. Northwood Park hosts Belfast rugby games.

Bishopdale Park (known as the elephant park) for the elephant slide there, has a flying fox, climbing spaces and Skate Park.

Grant Armstrong Park has junior rugby fields.

Nunweek Park is a large (20 Hectare) sports park with hockey, rugby, soccer and cricket fields. It is the home of Canterbury Hockey, has a playground, toilet and off-street parking.

Sheldon Park is home to Rugby, Touch, Bowls and the Belfast Community Network. It is next to the Belfast School junior campus, and they share the space with the community. It is a main point of community connection and gathering.

The United Sport Centre sits near Yaldhurst and is home to Christchurch United Football club. They have a turf fields and grass and often host competitions there.

The Styx Mill Conservation Reserve follows the natural river corridor. It has a dog walking park and wetland walk with light gravel accessible paths that take you around a lake with picnic tables for stopping to take in the view.

Part of the Waimakariri River Regional Park is in the Harewood ward. The park covers 15,000 hectares of river and river's edge land and is broken into several park areas including McLeans Island. It caters for mountain biking, picnicking, horse riding, walking, gamebird hunting, fishing, golf, paintball, vintage cars, steam and machinery clubs, tank rides and Orana Wildlife Park. Many of the recreation and interest groups based at McLeans Island bring people from across the city into the area.

The Groynes has lots of walking tracks, fishing spots, picnic areas and a large dog exercise park.

The Groynes gets its name from concrete filled wool sack blocks called Groynes, that were placed in the Ōtukaikino Creek during the 1930s for flood protection. Since the early 2000s there have been efforts made to restore the Ōtukaikino River that runs through the Groynes, remove the pest plants from the lakes and increase native plantings.





## Te Pou Tua Toru: Te Mahi

### Pillar 3: Participation

Residents and groups in the wider community are socially and actively engaged and able to initiate and influence decisions affecting their lives.



*Working bee at Northwood*



*Meeting with residents at Englefield Reserve*

The Belfast Area Residents Association (BARA) came out of recess and have been engaging with the Community Board on reactivating community projects and assets and looking into infrastructure and development. This is in response to meeting the needs of the ever-increasing population in Belfast. They have presented to the Community Board by way of public forums and connected with Council Staff on many occasions.

The Northwood Residents Association is well supported by the community and progresses its communities' needs and issues with great results including partnership projects with the Council to clean up the concrete features and Northwood Sculpture Roundabout area.

Roto Kohatu Reserve is made up of two freshwater lakes Tahī and Rua. It is popular for walking, swimming and kayaking. It is one of the region's top freshwater sites. In February 2022, due to the increasing demand for space in, around and on the lake, input was sought from the community on draft plans to help manage and plan the development of the reserve while protecting it. The Management Plan and Development Plan were completed in September 2022.

Celebrate Bishopdale is an annual community event established by the Fendalton/Waimairi Community Board in 2013 after local residents wanted to see a fun, family event held. The aim is to celebrate living in Bishopdale and come together as a community. The event is held at Bishopdale Park on Harewood Road and has large attendance numbers each year. Evaluations and community input continue to see the community direct the event.

Englefield Reserve was identified by the community as being in need of some TLC. A Nature Play Community Advisory group was established and the group have engaged with local children and youth to design a concept plan that will go to the wider community for feedback, to then deliver the project.

The Harewood Ward has 2,235 people - around 12 per cent (aged over 15 years) of the population in the ward volunteering in the community and community organisations.

The Waimāero Fendalton-Waimairi-Harewood Community Board continues to provide funding to help many of these community organisations to deliver their programmes and undertake their work in the ward area.



## Te Pou Tua Rua: Te Whenua

### Pillar 4: Preparedness

People feel safe in their communities and neighbourhoods and work together to understand, adapt and thrive in the context of change and disruption.

## Climate Change Resilience

Climate change is the biggest challenge of our time. It is already affecting our weather, health and wellbeing, natural environment, taonga species, mahinga kai, food production, biosecurity, infrastructure, and the economy.

The Christchurch City Council is responding to climate change in Ōtautahi Christchurch by working towards targets for reducing emissions, and by helping our communities prepare for and adapt to our changing climate.

Key risks identified include hot weather and drought, strong winds, wildfires, heavy rain and flooding, and rising sea level, coastal and ocean changes.

Inland communities of Christchurch faces key risks from increasing temperatures, drought, and more intense rainfall, which threaten terrestrial and aquatic ecosystems, while flash flooding from extreme rainfall and river flooding impacts built assets and infrastructure.

In terms of other emergencies to prepare for some of the Northwood area is on reticulated gas and there was a gas explosion in the area in 2019. Other emergencies could be terror attacks, bombs, pandemics and obviously for many in Christchurch Earthquakes which we have already experienced in 2010/2011.

Many in the Harewood ward see their role more as supporting others, as other areas of Christchurch are deemed to be more vulnerable to natural disasters. Being a coastal city, tsunamis are high on the list for response preparations.

The local Community Governance staff organised a Community Organisations Emergency Response Hui in May 2025. This hui will helped local groups understand what their potential roles during an emergency could look like and covered:

- The spectrum or responses to an emergency and different types of emergencies. How their organisation is placed with regards to resources to respond.

- An example of a Community Response Plan - Belfast Emergency Response Plan (BERP)
- Developing a Community Response Plan
- The role of a Community Hub

This event supported shared understanding and paved the way for future partnerships and preparedness initiatives across the ward.

Being safe can mean many different things to people and for some its about feeling safe to walk and live in your own community and home. To this end, the local Community Governance Team developed a Safety Brochure in collaboration with the NZ Police, Neighbourhood Support and Christchurch North Community Patrol. The generic version of this document was most recently delivered to the Belfast and Northwood areas in 2024 along with the Belfast Emergency Response Plan Foldout. This was part of a partnership project with the Belfast Community Network.

The Belfast Area Residents Association has also held meetings about security cameras and dangerous driving in the area and with the support of the local Council staff printed cards reminding car owners how to keep their cars and contents safe.

# Key Community Issues

Issue	Actions being taken
<b>Airport Noise and Air Pollution</b>	<p>Residents raised concerns about noise and air pollution from Christchurch Airport. In response, a committee was formed, and the Community Board appointed a representative to address arising issues. The committee continues to work on finding ways to reduce the impact of noise and air pollution on nearby residents.</p>
<b>Increasing Crime and Safety Concerns</b>  Theft, racism, public antisocial behaviour. There is anecdotal and social media reports of increased crime in Harewood, particularly in the Bishopdale area.	<p>Distribution of the local Community Governance Team safety brochure and staff are working with communities on responding to their particular concerns particularly in Belfast and Bishopdale with the local development groups and Residents Association.</p>
<b>Mental Health Issues increasing</b>  More people presenting with higher need and multiple issues.	<p>Community groups, schools and businesses alike are finding more people presenting with mental health issues and in the case of children, presenting as behavioural issues.</p> <p>Organisations have responded by volunteers and staff taking courses in wellbeing, identifying someone with an issue and how to support them. They are also working more collaboratively with schools to provide additional support, options for energy and mentors.</p> <p>The Community Board continue to support organisations with grant funding to enable them to provide these services, meet the increased need and undertake training.</p> <p>Local Council Staff have offered sessions on alternative and structured support avenues and look to provide training and support as the need arises.</p>
<b>Climate Change Concerns</b>	<p>Christchurch City Council is responding to climate change in Ōtautahi Christchurch by working towards targets for reducing emissions, and by helping our communities prepare for and adapt to our changing climate.</p> <p>Communities are being supported to be prepared for emergencies and natural disasters of all kinds.</p>



Issue	Actions being taken
<b>Social Isolation, particularly of the elderly</b>	<p>With funding support from the Community Board, organisations can provide older adult exercises, social and support classes and information sessions across the ward to increase community connections e.g. Bishopdale Community Trust and Belfast Community Network.</p> <p>The Bishopdale Connection Group are also looking into service provisions in response to community needs.</p> <p>There is a plan to undertake research in 2025 to confirm community priorities and needs and how to address these.</p>
<b>Bishopdale Village Mall and surrounding area regeneration</b>	<p>This project is ongoing in Bishopdale. Changes in community representatives have occurred and the Bishopdale Connection group may have a role to play.</p> <p>In May 2025, the Community Board considered the installation of an outdoor table tennis table on the Village Green. A public forum requesting the table was made to the Community Board in February 2025.</p> <p>A local community business owner has taken the Community Market on board as a project and a review and possible support of the project will be discussed with them and Council staff. Looking to bring more community together and share what's on offer.</p>
<b>Rapid Increase in housing developments and perceived reduced levels of services relative to rates and growth</b>	<p>Belfast has seen a large increase in housing and the support and social infrastructure to meet this needs to be considered. Research in the area is decades old and new research will identify consistent and changing needs of the community to assist in identifying their priorities to focus energy and resources.</p>
<b>Increase in pressure on finances, job loss and associated stress (newly in need)</b>	<p>Organisations are reporting more people are presenting with stress, much coming from rising financial pressures. People formerly able to meet household needs are finding they may need some support to get by. Some are losing their jobs.</p> <p>Organisations are responding to this increased demand and are stretching their resources so more can be supported in the community. The community Board are supporting organisations through funding and staff are looking at more collaborative projects to share the load across the community and resources.</p>