

Proposed Heritage Items and Settings Aerial Map

Aerial Map Reference: 7  
Heritage Item Number: 1306  
HeritageSetting Number: 677



Heritage Item and Setting boundaries are a visual reference only as they have been captured against specific sets of aerial photography.  
The outer boundary of the setting is deemed to follow:  
a) the specific measurement(s) or description of the setting boundary where they are included on the aerial map; or if not specified, then;  
b) the cadastral boundary at the nearest point to the setting boundary shown on the aerial maps  
The boundaries should only be referred to in relation to these specific photos, not survey information or building plans. There may be a visual distortion due to the angle of the aerial photography.  
District Plan rules do not apply for overlays extending into the Coastal Marine Area. The Coastal Marine Area is as defined in the Resource Management Act.

	Proposed Heritage Item		Existing Heritage Item
	Proposed Heritage Setting		Existing Heritage Setting

Scale 1 : 1,032  
Aerial photography  
captured in: 2018  
Published On: 9/05/2022



# Proposed Heritage Items and Settings Aerial Map

Aerial Map Reference: 8  
Heritage Item Number: 629  
HeritageSetting Number: 677



Heritage Item and Setting boundaries are a visual reference only as they have been captured against specific sets of aerial photography. The outer boundary of the setting is deemed to follow:  
a) the specific measurement(s) or description of the setting boundary where they are included on the aerial map; or if not specified, then;  
b) the cadastral boundary at the nearest point to the setting boundary shown on the aerial maps  
The boundaries should only be referred to in relation to these specific photos, not survey information or building plans. There may be a visual distortion due to the angle of the aerial photography.  
District Plan rules do not apply for overlays extending into the Coastal Marine Area. The Coastal Marine Area is as defined in the Resource Management Act.

	Proposed Heritage Item		Existing Heritage Item
	Proposed Heritage Setting		Existing Heritage Setting

Scale 1:1500  
Aerial photography  
captured in: 2018  
Published On: 10/01/2022



# Proposed Heritage Items and Settings Aerial Map

Aerial Map Reference: 10  
Heritage Item Number: 628  
HeritageSetting Number: 677



Heritage Item and Setting boundaries are a visual reference only as they have been captured against specific sets of aerial photography. The outer boundary of the setting is deemed to follow:  
a) the specific measurement(s) or description of the setting boundary where they are included on the aerial map; or if not specified, then;  
b) the cadastral boundary at the nearest point to the setting boundary shown on the aerial maps  
The boundaries should only be referred to in relation to these specific photos, not survey information or building plans. There may be a visual distortion due to the angle of the aerial photography.  
District Plan rules do not apply for overlays extending into the Coastal Marine Area. The Coastal Marine Area is as defined in the Resource Management Act.

- |   |                           |   |                           |
|---|---------------------------|---|---------------------------|
|  | Proposed Heritage Item    |  | Existing Heritage Item    |
|  | Proposed Heritage Setting |  | Existing Heritage Setting |

Scale 1:1500  
Aerial photography  
captured in: 2018  
Published On: 10/01/2022



Proposed Heritage Items and Settings Aerial Map

Aerial Map Reference: 24  
Heritage Item Number: 234  
HeritageSetting Number: 655



Heritage Item and Setting boundaries are a visual reference only as they have been captured against specific sets of aerial photography.  
The outer boundary of the setting is deemed to follow:  
a) the specific measurement(s) or description of the setting boundary where they are included on the aerial map; or if not specified, then;  
b) the cadastral boundary at the nearest point to the setting boundary shown on the aerial maps  
The boundaries should only be referred to in relation to these specific photos, not survey information or building plans. There may be a visual distortion due to the angle of the aerial photography.  
District Plan rules do not apply for overlays extending into the Coastal Marine Area. The Coastal Marine Area is as defined in the Resource Management Act.

- |  |                           |  |                           |
|--|---------------------------|--|---------------------------|
|  | Proposed Heritage Item    |  | Existing Heritage Item    |
|  | Proposed Heritage Setting |  | Existing Heritage Setting |

Scale 1 : 846  
Aerial photography  
captured in: 2018  
Published On:28/06/2022



# Proposed Heritage Items and Settings Aerial Map

Aerial Map Reference: 35  
Heritage Item Number: 127  
HeritageSetting Number: 676



Heritage Item and Setting boundaries are a visual reference only as they have been captured against specific sets of aerial photography.  
The outer boundary of the setting is deemed to follow:  
a) the specific measurement(s) or description of the setting boundary where they are included on the aerial map; or if not specified, then;  
b) the cadastral boundary at the nearest point to the setting boundary shown on the aerial maps  
The boundaries should only be referred to in relation to these specific photos, not survey information or building plans. There may be a visual distortion due to the angle of the aerial photography.  
District Plan rules do not apply for overlays extending into the Coastal Marine Area. The Coastal Marine Area is as defined in the Resource Management Act.

	Proposed Heritage Item		Existing Heritage Item
	Proposed Heritage Setting		Existing Heritage Setting

Scale 1 : 884  
Aerial photography  
captured in: 2018  
Published On: 5/05/2022



# Proposed Heritage Items and Settings Aerial Map

Aerial Map Reference: 68  
Heritage Item Number: 1410  
HeritageSetting Number: 661



Heritage Item and Setting boundaries are a visual reference only as they have been captured against specific sets of aerial photography.

The outer boundary of the setting is deemed to follow:

- a) the specific measurement(s) or description of the setting boundary where they are included on the aerial map; or if not specified, then;
- b) the cadastral boundary at the nearest point to the setting boundary shown on the aerial maps

The boundaries should only be referred to in relation to these specific photos, not survey information or building plans. There may be a visual distortion due to the angle of the aerial photography.  
District Plan rules do not apply for overlays extending into the Coastal Marine Area. The Coastal Marine Area is as defined in the Resource Management Act.

	Proposed Heritage Item		Existing Heritage Item
	Proposed Heritage Setting		Existing Heritage Setting

Scale 1 : 1,021  
Aerial photography  
captured in: 2018  
Published On: 5/05/2022



# Proposed Heritage Items and Settings Aerial Map

Aerial Map Reference: 92  
Heritage Item Number: 323  
HeritageSetting Number: 669



Heritage Item and Setting boundaries are a visual reference only as they have been captured against specific sets of aerial photography.  
The outer boundary of the setting is deemed to follow:  
a) the specific measurement(s) or description of the setting boundary where they are included on the aerial map; or if not specified, then;  
b) the cadastral boundary at the nearest point to the setting boundary shown on the aerial maps  
The boundaries should only be referred to in relation to these specific photos, not survey information or building plans. There may be a visual distortion due to the angle of the aerial photography.  
District Plan rules do not apply for overlays extending into the Coastal Marine Area. The Coastal Marine Area is as defined in the Resource Management Act.

	Proposed Heritage Item		Existing Heritage Item
	Proposed Heritage Setting		Existing Heritage Setting

Scale 1 : 868  
Aerial photography  
captured in: 2018  
Published On: 5/05/2022



# Proposed Heritage Items and Settings Aerial Map

Aerial Map Reference: 112  
Heritage Item Number: 423  
HeritageSetting Number: 450



Heritage Item and Setting boundaries are a visual reference only as they have been captured against specific sets of aerial photography.  
The outer boundary of the setting is deemed to follow:  
a) the specific measurement(s) or description of the setting boundary where they are included on the aerial map; or if not specified, then;  
b) the cadastral boundary at the nearest point to the setting boundary shown on the aerial maps  
The boundaries should only be referred to in relation to these specific photos, not survey information or building plans. There may be a visual distortion due to the angle of the aerial photography.  
District Plan rules do not apply for overlays extending into the Coastal Marine Area. The Coastal Marine Area is as defined in the Resource Management Act.

	Proposed Heritage Item		Existing Heritage Item
	Proposed Heritage Setting		Existing Heritage Setting

Scale 1 : 890  
Aerial photography  
captured in: 2018  
Published On: 5/05/2022



# Proposed Heritage Items and Settings Aerial Map

Aerial Map Reference: 113  
Heritage Item Number: 422  
HeritageSetting Number: 451



Heritage Item and Setting boundaries are a visual reference only as they have been captured against specific sets of aerial photography.  
The outer boundary of the setting is deemed to follow:  
a) the specific measurement(s) or description of the setting boundary where they are included on the aerial map; or if not specified, then;  
b) the cadastral boundary at the nearest point to the setting boundary shown on the aerial maps  
The boundaries should only be referred to in relation to these specific photos, not survey information or building plans. There may be a visual distortion due to the angle of the aerial photography.  
District Plan rules do not apply for overlays extending into the Coastal Marine Area. The Coastal Marine Area is as defined in the Resource Management Act.

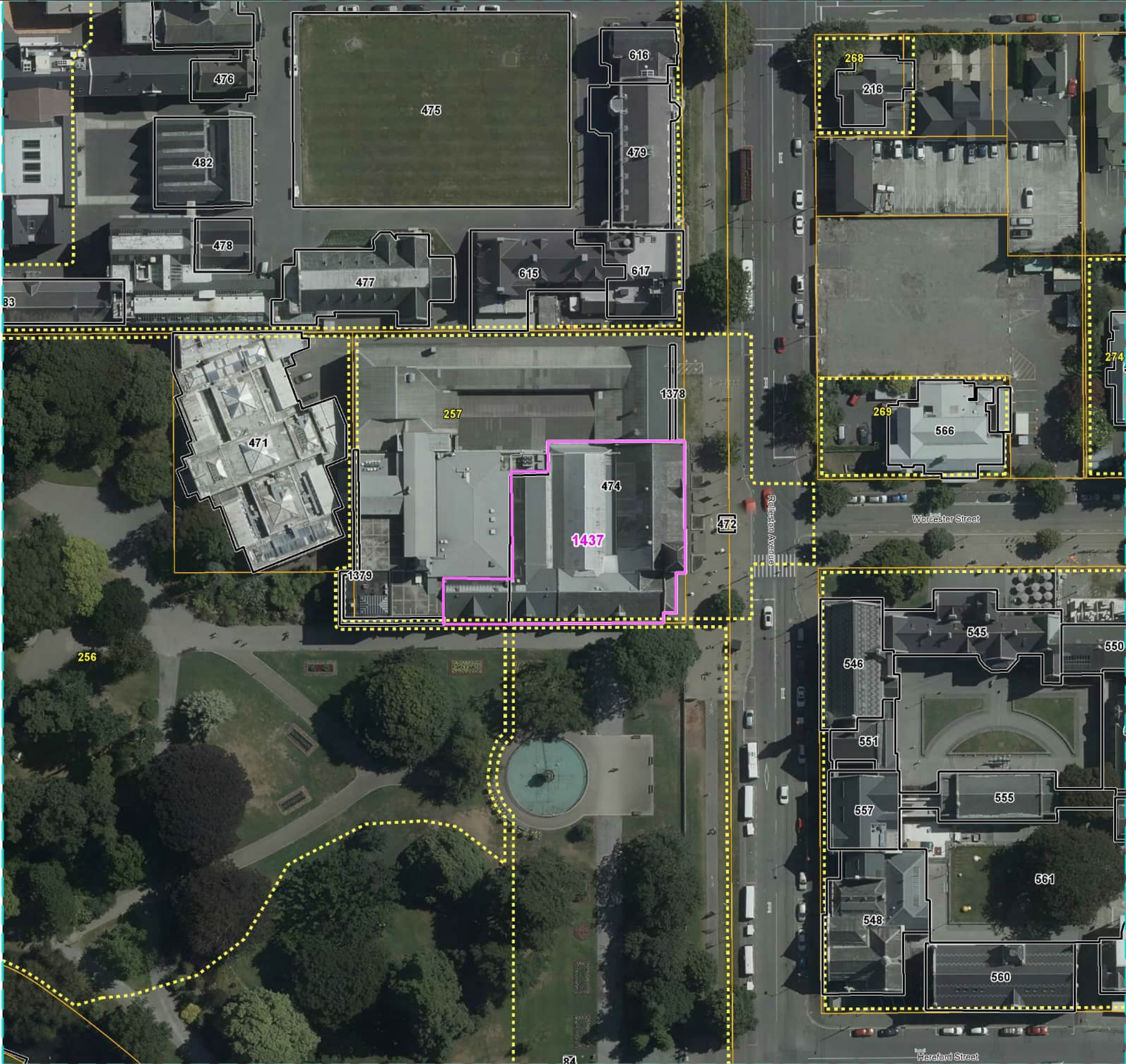
	Proposed Heritage Item		Existing Heritage Item
	Proposed Heritage Setting		Existing Heritage Setting

Scale 1 : 843  
Aerial photography  
captured in: 2018  
Published On: 5/05/2022



Proposed Heritage Items and Settings Aerial Map

Aerial Map Reference: 124  
Heritage Item Number: 1437  
HeritageSetting Number: 257



Heritage Item and Setting boundaries are a visual reference only as they have been captured against specific sets of aerial photography.  
The outer boundary of the setting is deemed to follow:  
a) the specific measurement(s) or description of the setting boundary where they are included on the aerial map; or if not specified, then;  
b) the cadastral boundary at the nearest point to the setting boundary shown on the aerial maps  
The boundaries should only be referred to in relation to these specific photos, not survey information or building plans. There may be a visual distortion due to the angle of the aerial photography.  
District Plan rules do not apply for overlays extending into the Coastal Marine Area. The Coastal Marine Area is as defined in the Resource Management Act.

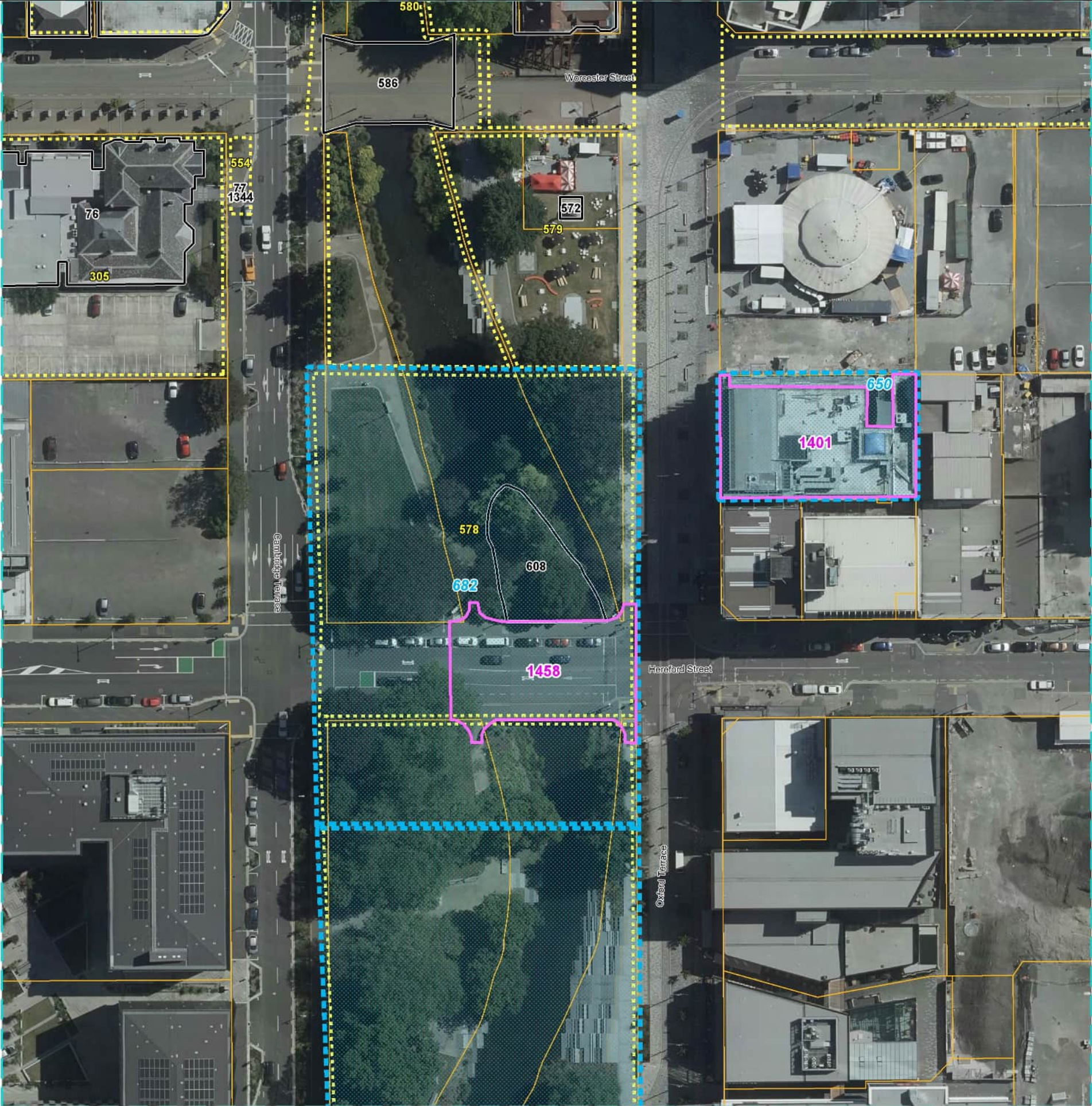
 Proposed Heritage Item	 Existing Heritage Item
 Proposed Heritage Setting	 Existing Heritage Setting

Scale 1 : 947  
Aerial photography  
captured in: 2018  
Published On:10/05/2022



Proposed Heritage Items and Settings Aerial Map

Aerial Map Reference: 224  
Heritage Item Number: 608  
HeritageSetting Number: 682



Heritage Item and Setting boundaries are a visual reference only as they have been captured against specific sets of aerial photography.  
The outer boundary of the setting is deemed to follow:  
a) the specific measurement(s) or description of the setting boundary where they are included on the aerial map; or if not specified, then;  
b) the cadastral boundary at the nearest point to the setting boundary shown on the aerial maps  
The boundaries should only be referred to in relation to these specific photos, not survey information or building plans. There may be a visual distortion due to the angle of the aerial photography.  
District Plan rules do not apply for overlays extending into the Coastal Marine Area. The Coastal Marine Area is as defined in the Resource Management Act.

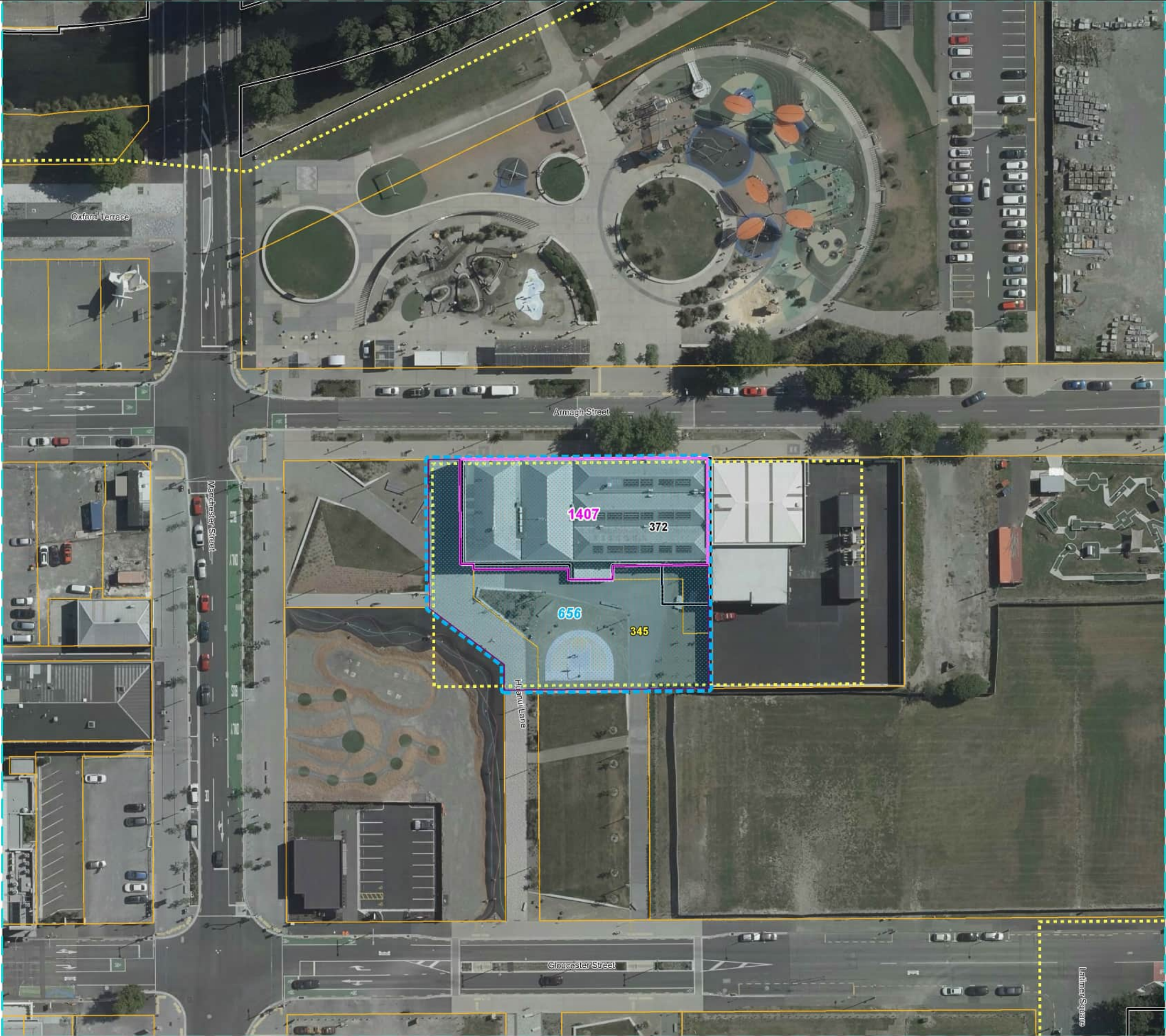
Proposed Heritage Item  
Proposed Heritage Setting  
Existing Heritage Item  
Existing Heritage Setting

Scale 1 : 893  
Aerial photography  
captured in: 2018  
Published On: 7/07/2022



Proposed Heritage Items and Settings Aerial Map

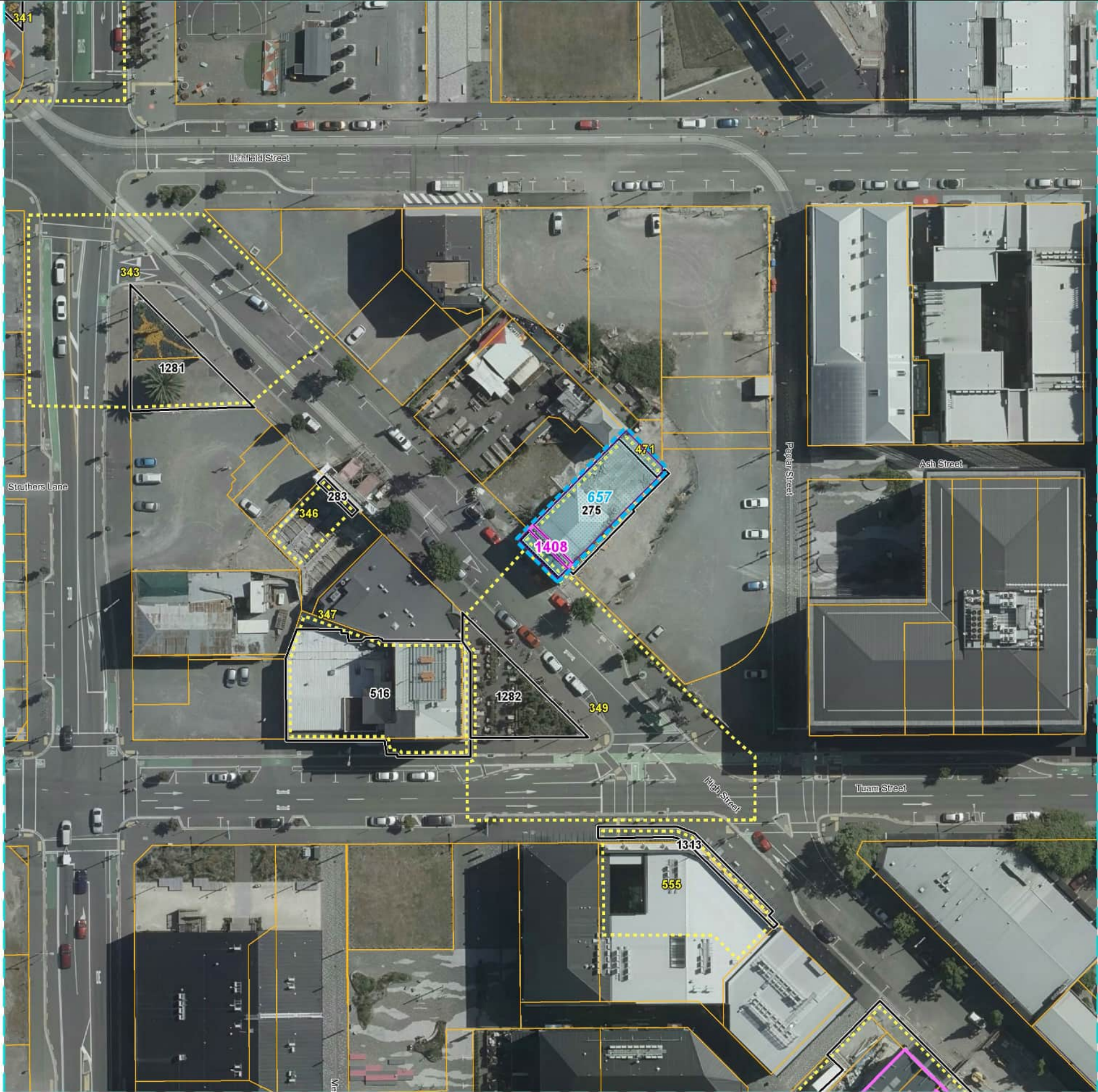
Aerial Map Reference: 276  
Heritage Item Number: 1407  
HeritageSetting Number: 656





Proposed Heritage Items and Settings Aerial Map

Aerial Map Reference: 280  
Heritage Item Number: 1408  
HeritageSetting Number: 657





# Proposed Heritage Items and Settings Aerial Map

Aerial Map Reference: 446

Heritage Item Number: 602

HeritageSetting Number: 670



Heritage Item and Setting boundaries are a visual reference only as they have been captured against specific sets of aerial photography. The outer boundary of the setting is deemed to follow:  
a) the specific measurement(s) or description of the setting boundary where they are included on the aerial map; or if not specified, then;  
b) the cadastral boundary at the nearest point to the setting boundary shown on the aerial maps  
The boundaries should only be referred to in relation to these specific photos, not survey information or building plans. There may be a visual distortion due to the angle of the aerial photography.  
District Plan rules do not apply for overlays extending into the Coastal Marine Area. The Coastal Marine Area is as defined in the Resource Management Act.

- |  |                           |  |                           |
|--|---------------------------|--|---------------------------|
|  | Proposed Heritage Item    |  | Existing Heritage Item    |
|  | Proposed Heritage Setting |  | Existing Heritage Setting |

Scale 1:2004  
Aerial photography  
captured in: 2018  
Published On:10/01/2022



Proposed Heritage Items and Settings Aerial Map

Aerial Map Reference: 477  
Heritage Item Number: 1454  
HeritageSetting Number: 678





Proposed Heritage Items and Settings Aerial Map

Aerial Map Reference: 610  
Heritage Item Number: 1193  
HeritageSetting Number: 660



Heritage Item and Setting boundaries are a visual reference only as they have been captured against specific sets of aerial photography.  
The outer boundary of the setting is deemed to follow:  
a) the specific measurement(s) or description of the setting boundary where they are included on the aerial map; or if not specified, then;  
b) the cadastral boundary at the nearest point to the setting boundary shown on the aerial maps  
The boundaries should only be referred to in relation to these specific photos, not survey information or building plans. There may be a visual distortion due to the angle of the aerial photography.  
District Plan rules do not apply for overlays extending into the Coastal Marine Area. The Coastal Marine Area is as defined in the Resource Management Act.

	Proposed Heritage Item		Existing Heritage Item
	Proposed Heritage Setting		Existing Heritage Setting

Scale 1 : 831  
Aerial photography  
captured in: 2016  
Published On: 5/05/2022

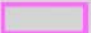


Proposed Heritage Items and Settings Aerial Map

Aerial Map Reference: 616  
Heritage Item Number: 1170  
HeritageSetting Number: 658



Heritage Item and Setting boundaries are a visual reference only as they have been captured against specific sets of aerial photography.  
The outer boundary of the setting is deemed to follow:  
a) the specific measurement(s) or description of the setting boundary where they are included on the aerial map; or if not specified, then;  
b) the cadastral boundary at the nearest point to the setting boundary shown on the aerial maps  
The boundaries should only be referred to in relation to these specific photos, not survey information or building plans. There may be a visual distortion due to the angle of the aerial photography.  
District Plan rules do not apply for overlays extending into the Coastal Marine Area. The Coastal Marine Area is as defined in the Resource Management Act.

 Proposed Heritage Item	 Existing Heritage Item
 Proposed Heritage Setting	 Existing Heritage Setting

Scale 1:881  
Aerial photography  
captured in: 2018  
Published On:10/01/2022



Proposed Heritage Items and Settings Aerial Map

Aerial Map Reference: 626  
Heritage Item Number: 719  
HeritageSetting Number: 662





# Proposed Heritage Items and Settings Aerial Map

Aerial Map Reference: 646  
Heritage Item Number: 1436  
HeritageSetting Number: 364



Heritage Item and Setting boundaries are a visual reference only as they have been captured against specific sets of aerial photography.  
The outer boundary of the setting is deemed to follow:  
a) the specific measurement(s) or description of the setting boundary where they are included on the aerial map; or if not specified, then;  
b) the cadastral boundary at the nearest point to the setting boundary shown on the aerial maps  
The boundaries should only be referred to in relation to these specific photos, not survey information or building plans. There may be a visual distortion due to the angle of the aerial photography.  
District Plan rules do not apply for overlays extending into the Coastal Marine Area. The Coastal Marine Area is as defined in the Resource Management Act.

 Proposed Heritage Item	 Existing Heritage Item
 Proposed Heritage Setting	 Existing Heritage Setting

Scale 1 : 903  
Aerial photography  
captured in: 2018  
Published On: 12/05/2022



Proposed Heritage Items and Settings Aerial Map

Aerial Map Reference: 672  
Heritage Item Number: 243  
HeritageSetting Number:



Heritage Item and Setting boundaries are a visual reference only as they have been captured against specific sets of aerial photography.  
The outer boundary of the setting is deemed to follow:  
a) the specific measurement(s) or description of the setting boundary where they are included on the aerial map; or if not specified, then;  
b) the cadastral boundary at the nearest point to the setting boundary shown on the aerial maps  
The boundaries should only be referred to in relation to these specific photos, not survey information or building plans. There may be a visual distortion due to the angle of the aerial photography.  
District Plan rules do not apply for overlays extending into the Coastal Marine Area. The Coastal Marine Area is as defined in the Resource Management Act.

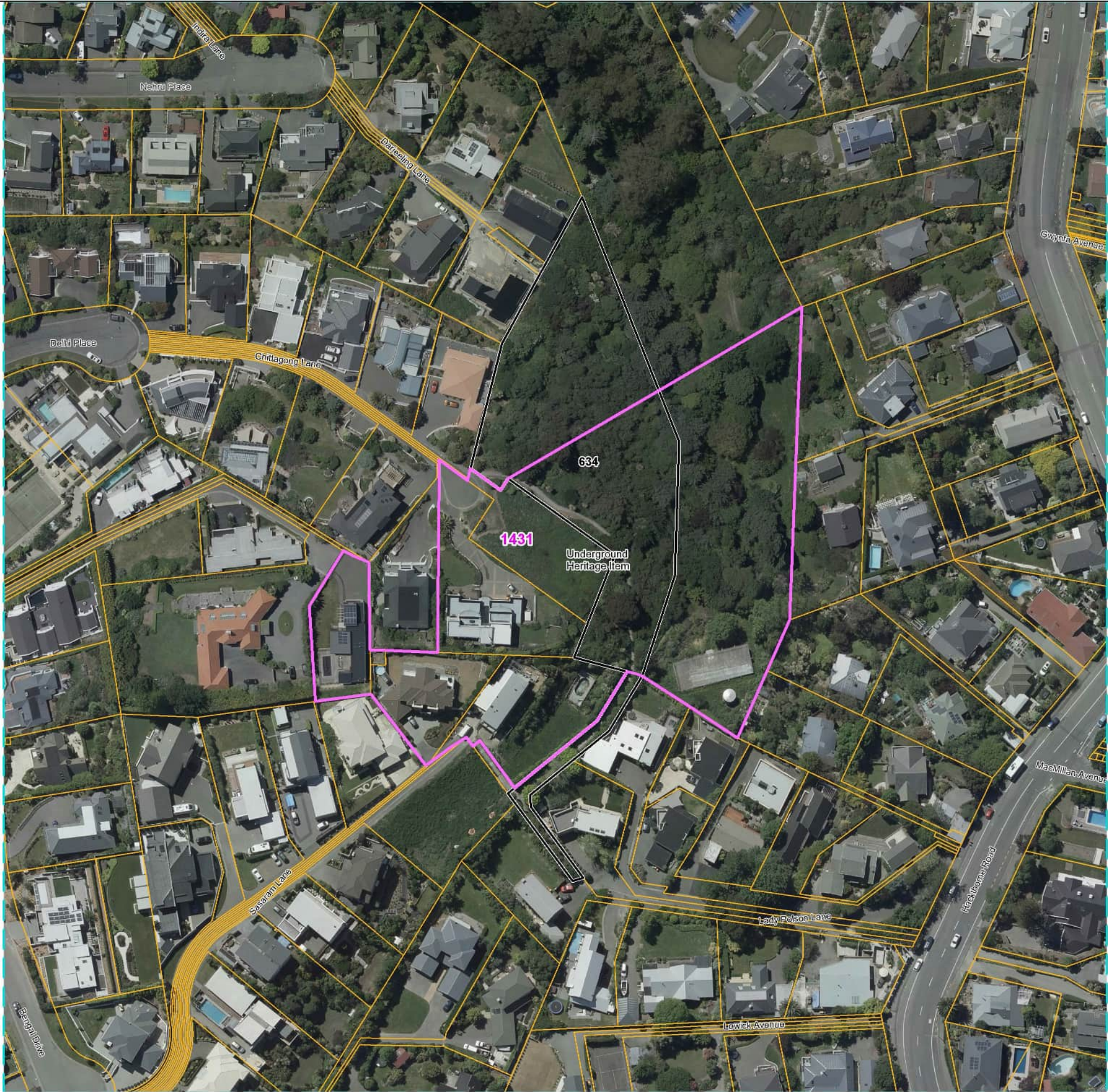
- |  |                           |  |                           |
|--|---------------------------|--|---------------------------|
|  | Proposed Heritage Item    |  | Existing Heritage Item    |
|  | Proposed Heritage Setting |  | Existing Heritage Setting |

Scale 1 : 2,037  
Aerial photography  
captured in: 2018  
Published On: 7/07/2022



# Proposed Heritage Items and Settings Aerial Map

Aerial Map Reference: 674  
Heritage Item Number: 1431  
HeritageSetting Number:



Heritage Item and Setting boundaries are a visual reference only as they have been captured against specific sets of aerial photography.  
The outer boundary of the setting is deemed to follow:  
a) the specific measurement(s) or description of the setting boundary where they are included on the aerial map; or if not specified, then;  
b) the cadastral boundary at the nearest point to the setting boundary shown on the aerial maps  
The boundaries should only be referred to in relation to these specific photos, not survey information or building plans. There may be a visual distortion due to the angle of the aerial photography.  
District Plan rules do not apply for overlays extending into the Coastal Marine Area. The Coastal Marine Area is as defined in the Resource Management Act.

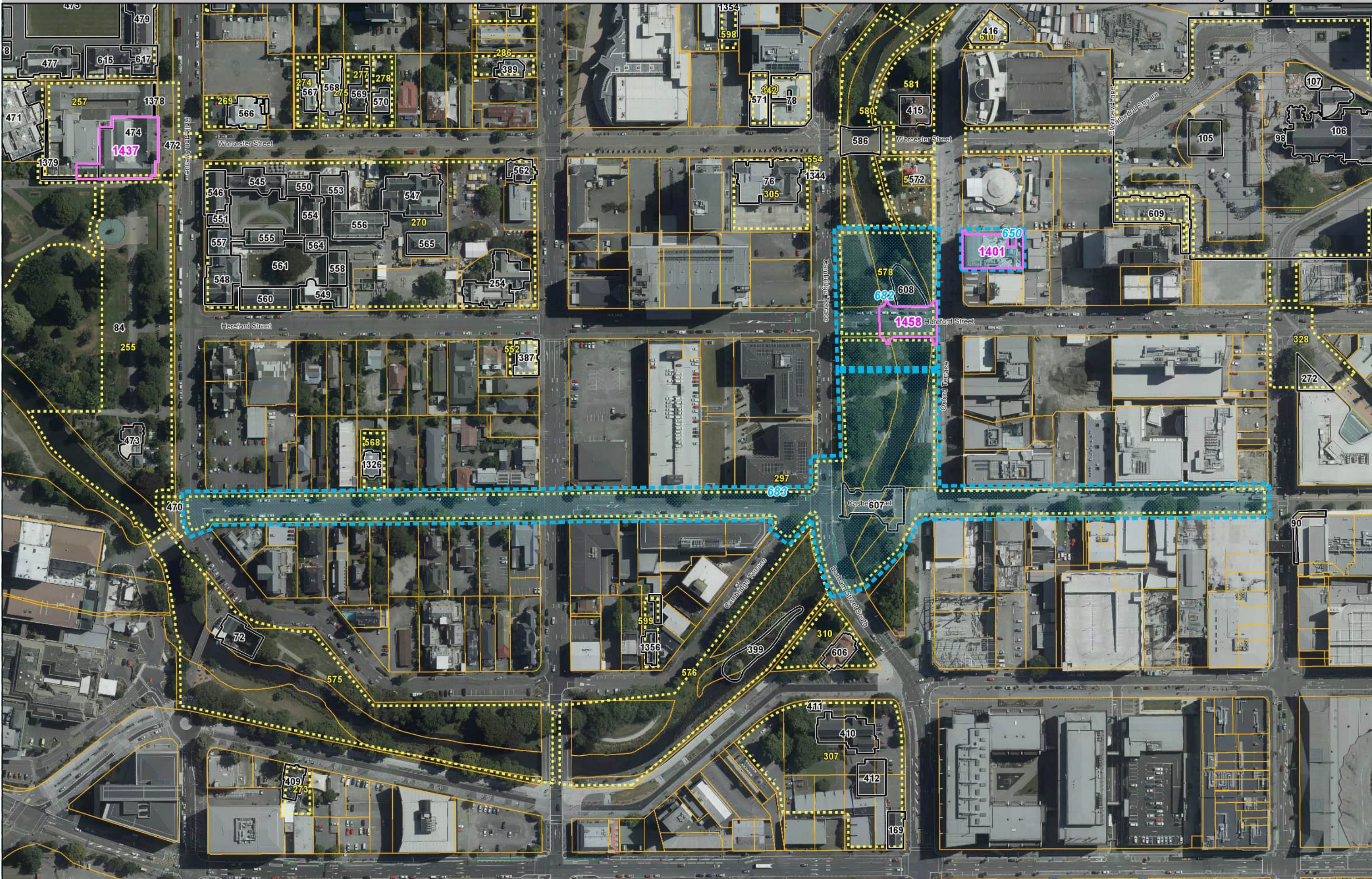
 Proposed Heritage Item	 Existing Heritage Item
 Proposed Heritage Setting	 Existing Heritage Setting

Scale 1 : 1,401  
Aerial photography  
captured in: 2018  
Published On: 5/05/2022



# Proposed Heritage Items and Settings Aerial Map

Aerial Map Reference: 680  
Heritage Item Number: 607  
HeritageSetting Number: 683



Heritage Item and Setting boundaries are a visual reference only as they have been captured against specific sets of aerial photography. The outer boundary of the setting is deemed to follow:  
a) the specific measurement(s) or description of the setting boundary where they are included on the aerial map; or if not specified, then;  
b) the cadastral boundary at the nearest point to the setting boundary shown on the aerial maps  
The boundaries should only be referred to in relation to these specific photos, not survey information or building plans. There may be a visual distortion due to the angle of the aerial photography.  
District Plan rules do not apply for overlays extending into the Coastal Marine Area. The Coastal Marine Area is as defined in the Resource Management Act.

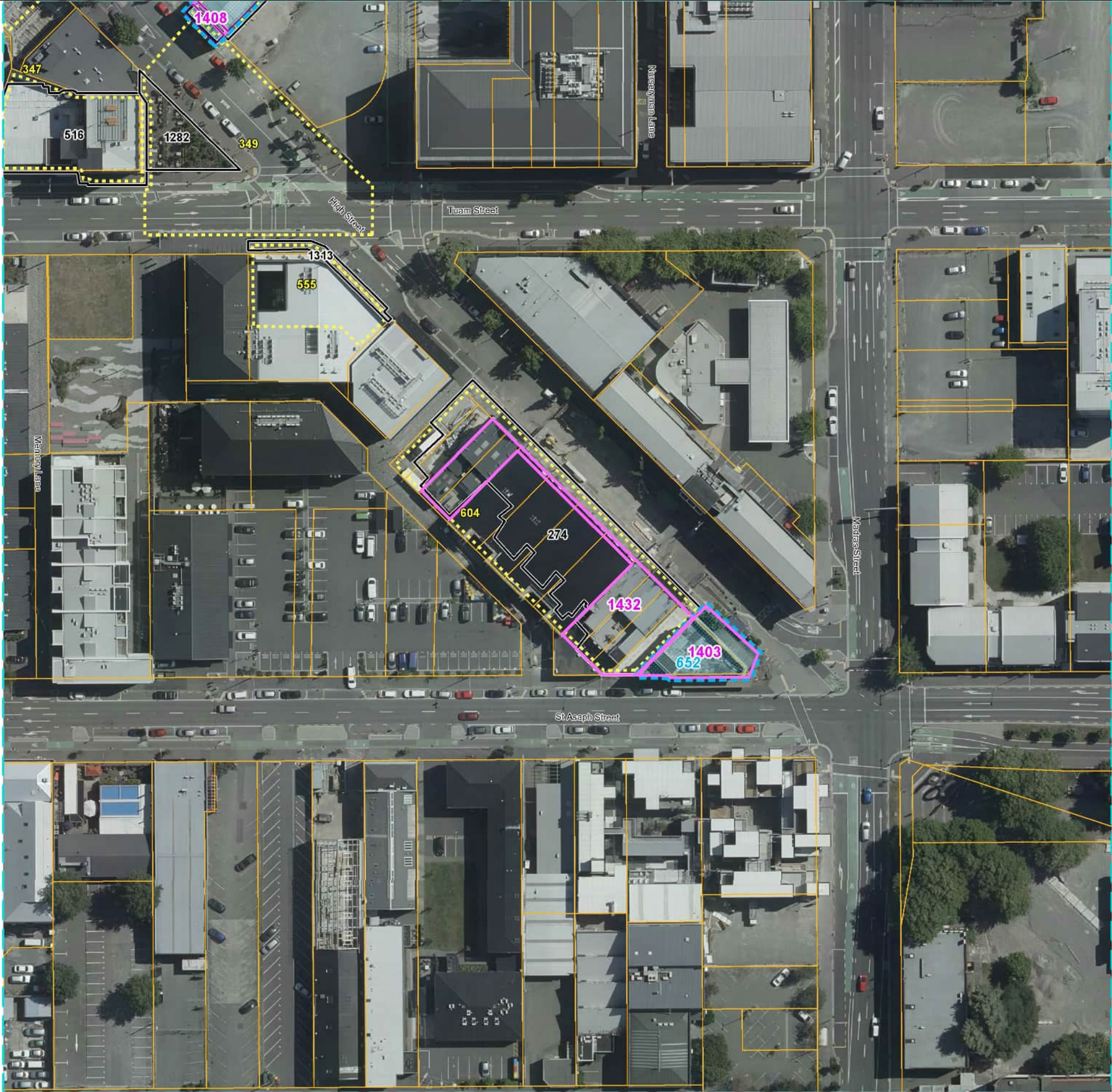
- |  |                           |  |                           |
|--|---------------------------|--|---------------------------|
|  | Proposed Heritage Item    |  | Existing Heritage Item    |
|  | Proposed Heritage Setting |  | Existing Heritage Setting |

Scale 1:2300  
Aerial photography captured in: 2018  
Published On: 07/07/2022



Proposed Heritage Items and Settings Aerial Map

Aerial Map Reference: 693  
Heritage Item Number: 1432  
HeritageSetting Number: 604





Proposed Heritage Items and Settings Aerial Map

Aerial Map Reference: 794  
Heritage Item Number: 1380  
HeritageSetting Number: 675



Heritage Item and Setting boundaries are a visual reference only as they have been captured against specific sets of aerial photography.  
The outer boundary of the setting is deemed to follow:  
a) the specific measurement(s) or description of the setting boundary where they are included on the aerial map; or if not specified, then;  
b) the cadastral boundary at the nearest point to the setting boundary shown on the aerial maps  
The boundaries should only be referred to in relation to these specific photos, not survey information or building plans. There may be a visual distortion due to the angle of the aerial photography.  
District Plan rules do not apply for overlays extending into the Coastal Marine Area. The Coastal Marine Area is as defined in the Resource Management Act.

- |   |   |
|---|---|
|  Proposed Heritage Item    |  Existing Heritage Item    |
|  Proposed Heritage Setting |  Existing Heritage Setting |

Scale 1 : 819  
Aerial photography  
captured in: 2018  
Published On: 5/05/2022



Proposed Heritage Items and Settings Aerial Map

Aerial Map Reference: 795  
Heritage Item Number: 1381  
HeritageSetting Number: 675



Heritage Item and Setting boundaries are a visual reference only as they have been captured against specific sets of aerial photography.  
The outer boundary of the setting is deemed to follow:  
a) the specific measurement(s) or description of the setting boundary where they are included on the aerial map; or if not specified, then;  
b) the cadastral boundary at the nearest point to the setting boundary shown on the aerial maps  
The boundaries should only be referred to in relation to these specific photos, not survey information or building plans. There may be a visual distortion due to the angle of the aerial photography.  
District Plan rules do not apply for overlays extending into the Coastal Marine Area. The Coastal Marine Area is as defined in the Resource Management Act.

- |   |                           |   |                           |
|---|---------------------------|---|---------------------------|
|  | Proposed Heritage Item    |  | Existing Heritage Item    |
|  | Proposed Heritage Setting |  | Existing Heritage Setting |

Scale 1 : 807  
Aerial photography  
captured in: 2018  
Published On:13/05/2022



Proposed Heritage Items and Settings Aerial Map

Aerial Map Reference: 796  
Heritage Item Number: 1382  
HeritageSetting Number: 675



Heritage Item and Setting boundaries are a visual reference only as they have been captured against specific sets of aerial photography.  
The outer boundary of the setting is deemed to follow:  
a) the specific measurement(s) or description of the setting boundary where they are included on the aerial map; or if not specified, then;  
b) the cadastral boundary at the nearest point to the setting boundary shown on the aerial maps  
The boundaries should only be referred to in relation to these specific photos, not survey information or building plans. There may be a visual distortion due to the angle of the aerial photography.  
District Plan rules do not apply for overlays extending into the Coastal Marine Area. The Coastal Marine Area is as defined in the Resource Management Act.

- |  |                           |  |                           |
|--|---------------------------|--|---------------------------|
|  | Proposed Heritage Item    |  | Existing Heritage Item    |
|  | Proposed Heritage Setting |  | Existing Heritage Setting |

Scale 1 : 813  
Aerial photography  
captured in: 2018  
Published On:13/05/2022



Proposed Heritage Items and Settings Aerial Map

Aerial Map Reference: 797  
Heritage Item Number: 1383  
HeritageSetting Number: 675



Heritage Item and Setting boundaries are a visual reference only as they have been captured against specific sets of aerial photography.  
The outer boundary of the setting is deemed to follow:  
a) the specific measurement(s) or description of the setting boundary where they are included on the aerial map; or if not specified, then;  
b) the cadastral boundary at the nearest point to the setting boundary shown on the aerial maps  
The boundaries should only be referred to in relation to these specific photos, not survey information or building plans. There may be a visual distortion due to the angle of the aerial photography.  
District Plan rules do not apply for overlays extending into the Coastal Marine Area. The Coastal Marine Area is as defined in the Resource Management Act.

- |   |   |
|---|---|
|  Proposed Heritage Item    |  Existing Heritage Item    |
|  Proposed Heritage Setting |  Existing Heritage Setting |

Scale 1 : 819  
Aerial photography  
captured in: 2018  
Published On:13/05/2022



Proposed Heritage Items and Settings Aerial Map

Aerial Map Reference: 798  
Heritage Item Number: 1384  
HeritageSetting Number: 675



Heritage Item and Setting boundaries are a visual reference only as they have been captured against specific sets of aerial photography.  
The outer boundary of the setting is deemed to follow:  
a) the specific measurement(s) or description of the setting boundary where they are included on the aerial map; or if not specified, then;  
b) the cadastral boundary at the nearest point to the setting boundary shown on the aerial maps  
The boundaries should only be referred to in relation to these specific photos, not survey information or building plans. There may be a visual distortion due to the angle of the aerial photography.  
District Plan rules do not apply for overlays extending into the Coastal Marine Area. The Coastal Marine Area is as defined in the Resource Management Act.

- |   |                           |   |                           |
|---|---------------------------|---|---------------------------|
|  | Proposed Heritage Item    |  | Existing Heritage Item    |
|  | Proposed Heritage Setting |  | Existing Heritage Setting |

Scale 1 : 833  
Aerial photography  
captured in: 2018  
Published On:13/05/2022



Proposed Heritage Items and Settings Aerial Map

Aerial Map Reference: 799  
Heritage Item Number: 1385  
HeritageSetting Number: 644



Heritage Item and Setting boundaries are a visual reference only as they have been captured against specific sets of aerial photography.  
The outer boundary of the setting is deemed to follow:  
a) the specific measurement(s) or description of the setting boundary where they are included on the aerial map; or if not specified, then;  
b) the cadastral boundary at the nearest point to the setting boundary shown on the aerial maps  
The boundaries should only be referred to in relation to these specific photos, not survey information or building plans. There may be a visual distortion due to the angle of the aerial photography.  
District Plan rules do not apply for overlays extending into the Coastal Marine Area. The Coastal Marine Area is as defined in the Resource Management Act.

- |   |                           |   |                           |
|---|---------------------------|---|---------------------------|
|  | Proposed Heritage Item    |  | Existing Heritage Item    |
|  | Proposed Heritage Setting |  | Existing Heritage Setting |

Scale 1 : 814  
Aerial photography  
captured in: 2018  
Published On: 5/05/2022