

Proposed Heritage Items and Settings Aerial Map

Aerial Map Reference: 158
Heritage Item Number: 1409
HeritageSetting Number: 659



Heritage Item and Setting boundaries are a visual reference only as they have been captured against specific sets of aerial photography.
The outer boundary of the setting is deemed to follow:
a) the specific measurement(s) or description of the setting boundary where they are included on the aerial map; or if not specified, then;
b) the cadastral boundary at the nearest point to the setting boundary shown on the aerial maps
The boundaries should only be referred to in relation to these specific photos, not survey information or building plans. There may be a visual distortion due to the angle of the aerial photography.
District Plan rules do not apply for overlays extending into the Coastal Marine Area. The Coastal Marine Area is as defined in the Resource Management Act.

 Proposed Heritage Item	 Existing Heritage Item
 Proposed Heritage Setting	 Existing Heritage Setting

Scale 1 : 872
Aerial photography
captured in: 2018
Published On: 5/05/2022

Proposed Heritage Items and Settings Aerial Map

Aerial Map Reference: 811
Heritage Item Number: 1400
HeritageSetting Number:



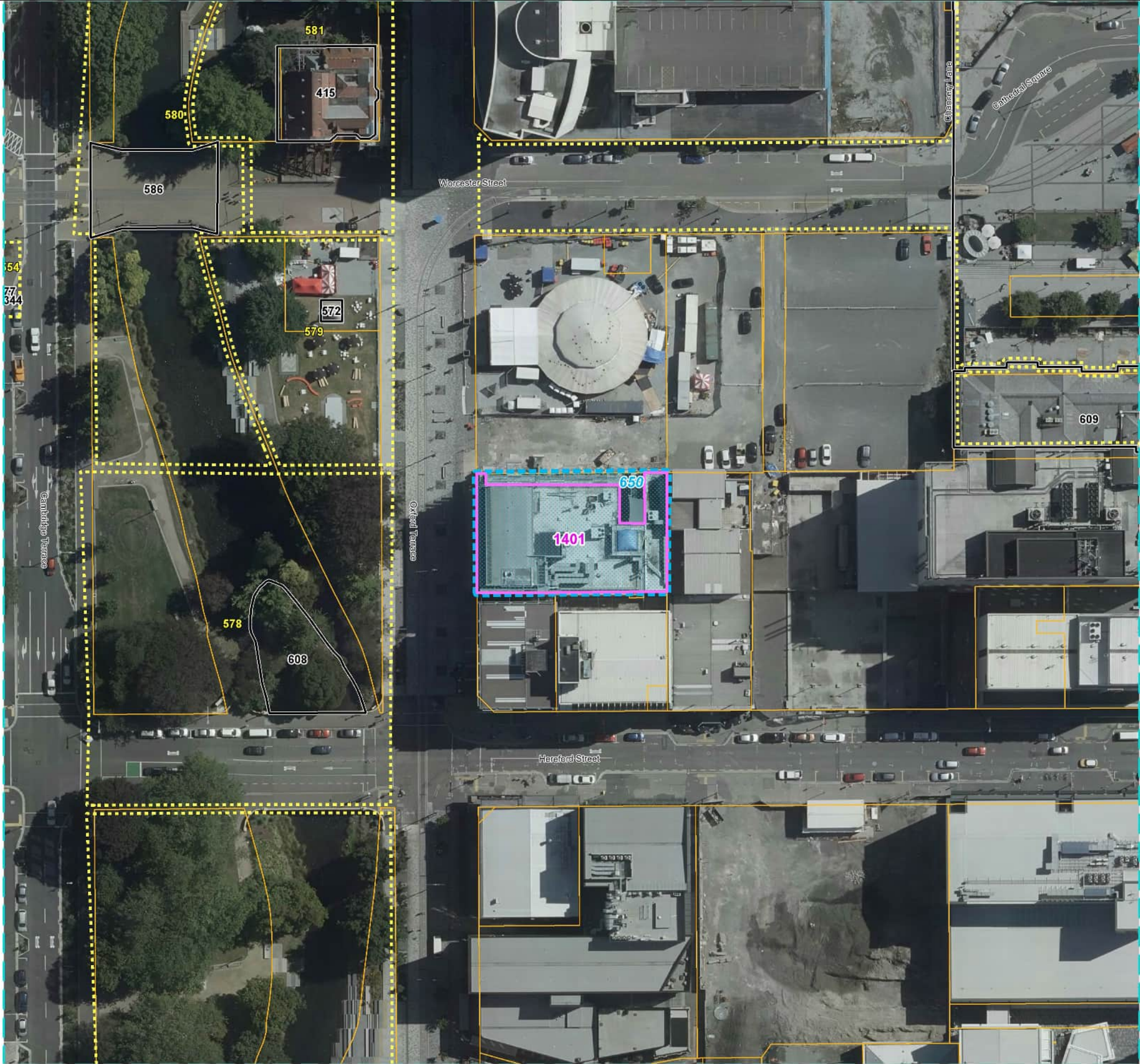
Heritage Item and Setting boundaries are a visual reference only as they have been captured against specific sets of aerial photography.
The outer boundary of the setting is deemed to follow:
a) the specific measurement(s) or description of the setting boundary where they are included on the aerial map; or if not specified, then;
b) the cadastral boundary at the nearest point to the setting boundary shown on the aerial maps
The boundaries should only be referred to in relation to these specific photos, not survey information or building plans. There may be a visual distortion due to the angle of the aerial photography.
District Plan rules do not apply for overlays extending into the Coastal Marine Area. The Coastal Marine Area is as defined in the Resource Management Act.

 Proposed Heritage Item	 Existing Heritage Item
 Proposed Heritage Setting	 Existing Heritage Setting

Scale 1 : 948
Aerial photography
captured in: 2016
Published On: 5/05/2022

Proposed Heritage Items and Settings Aerial Map

Aerial Map Reference: 812
Heritage Item Number: 1401
HeritageSetting Number: 650



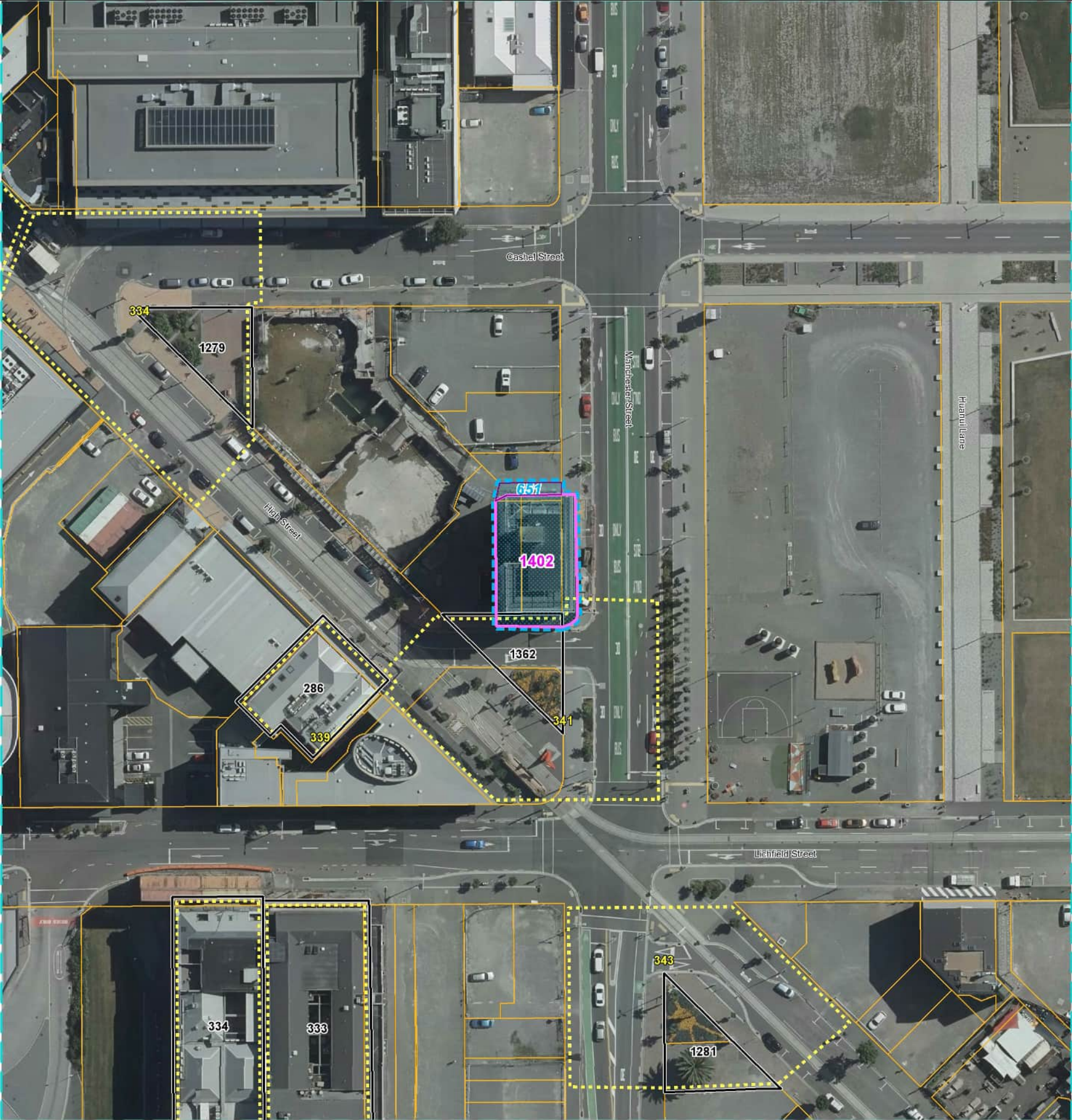
Heritage Item and Setting boundaries are a visual reference only as they have been captured against specific sets of aerial photography.
The outer boundary of the setting is deemed to follow:
a) the specific measurement(s) or description of the setting boundary where they are included on the aerial map; or if not specified, then;
b) the cadastral boundary at the nearest point to the setting boundary shown on the aerial maps
The boundaries should only be referred to in relation to these specific photos, not survey information or building plans. There may be a visual distortion due to the angle of the aerial photography.
District Plan rules do not apply for overlays extending into the Coastal Marine Area. The Coastal Marine Area is as defined in the Resource Management Act.

	Proposed Heritage Item		Existing Heritage Item
	Proposed Heritage Setting		Existing Heritage Setting

Scale 1 : 883
Aerial photography
captured in: 2018
Published On: 5/05/2022

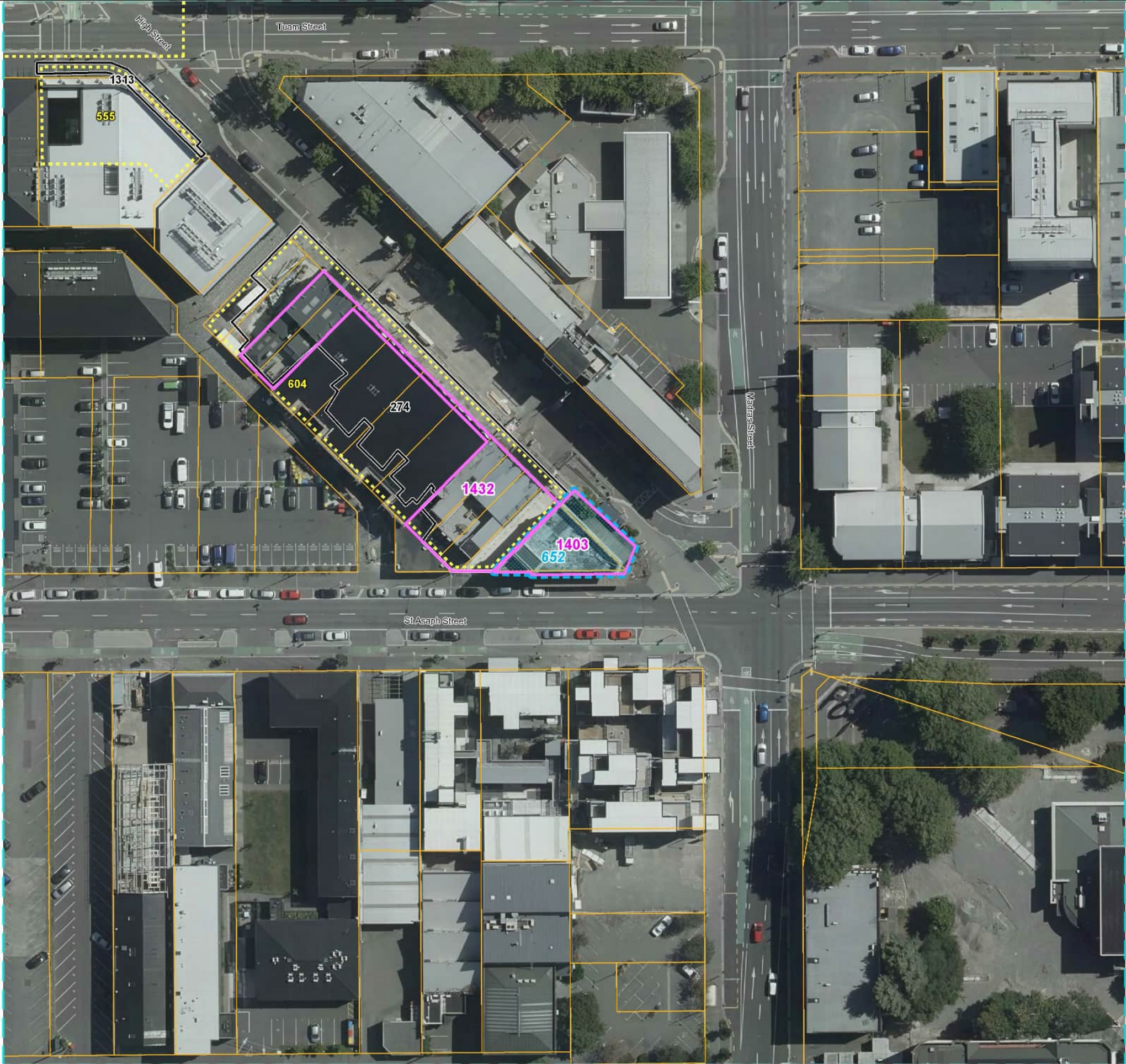
Proposed Heritage Items and Settings Aerial Map

Aerial Map Reference: 813
Heritage Item Number: 1402
HeritageSetting Number: 651



Proposed Heritage Items and Settings Aerial Map

Aerial Map Reference: 814
Heritage Item Number: 1403
HeritageSetting Number: 652



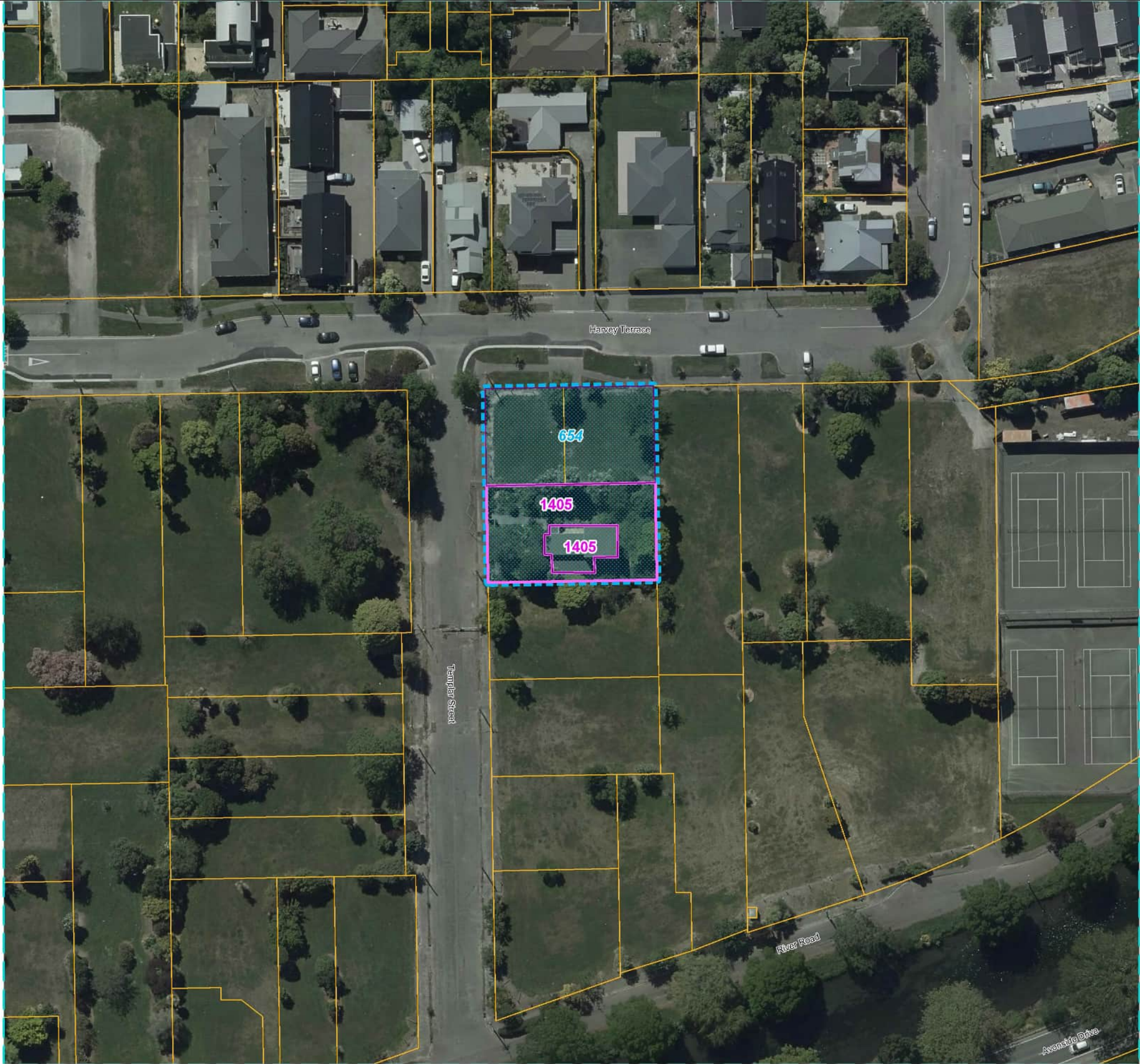
Heritage Item and Setting boundaries are a visual reference only as they have been captured against specific sets of aerial photography.
The outer boundary of the setting is deemed to follow:
a) the specific measurement(s) or description of the setting boundary where they are included on the aerial map; or if not specified, then;
b) the cadastral boundary at the nearest point to the setting boundary shown on the aerial maps
The boundaries should only be referred to in relation to these specific photos, not survey information or building plans. There may be a visual distortion due to the angle of the aerial photography.
District Plan rules do not apply for overlays extending into the Coastal Marine Area. The Coastal Marine Area is as defined in the Resource Management Act.

- | | | | |
|---|---------------------------|---|---------------------------|
|  | Proposed Heritage Item |  | Existing Heritage Item |
|  | Proposed Heritage Setting |  | Existing Heritage Setting |

Scale 1 : 851
Aerial photography
captured in: 2018
Published On: 5/05/2022

Proposed Heritage Items and Settings Aerial Map

Aerial Map Reference: 816
Heritage Item Number: 1405
HeritageSetting Number: 654



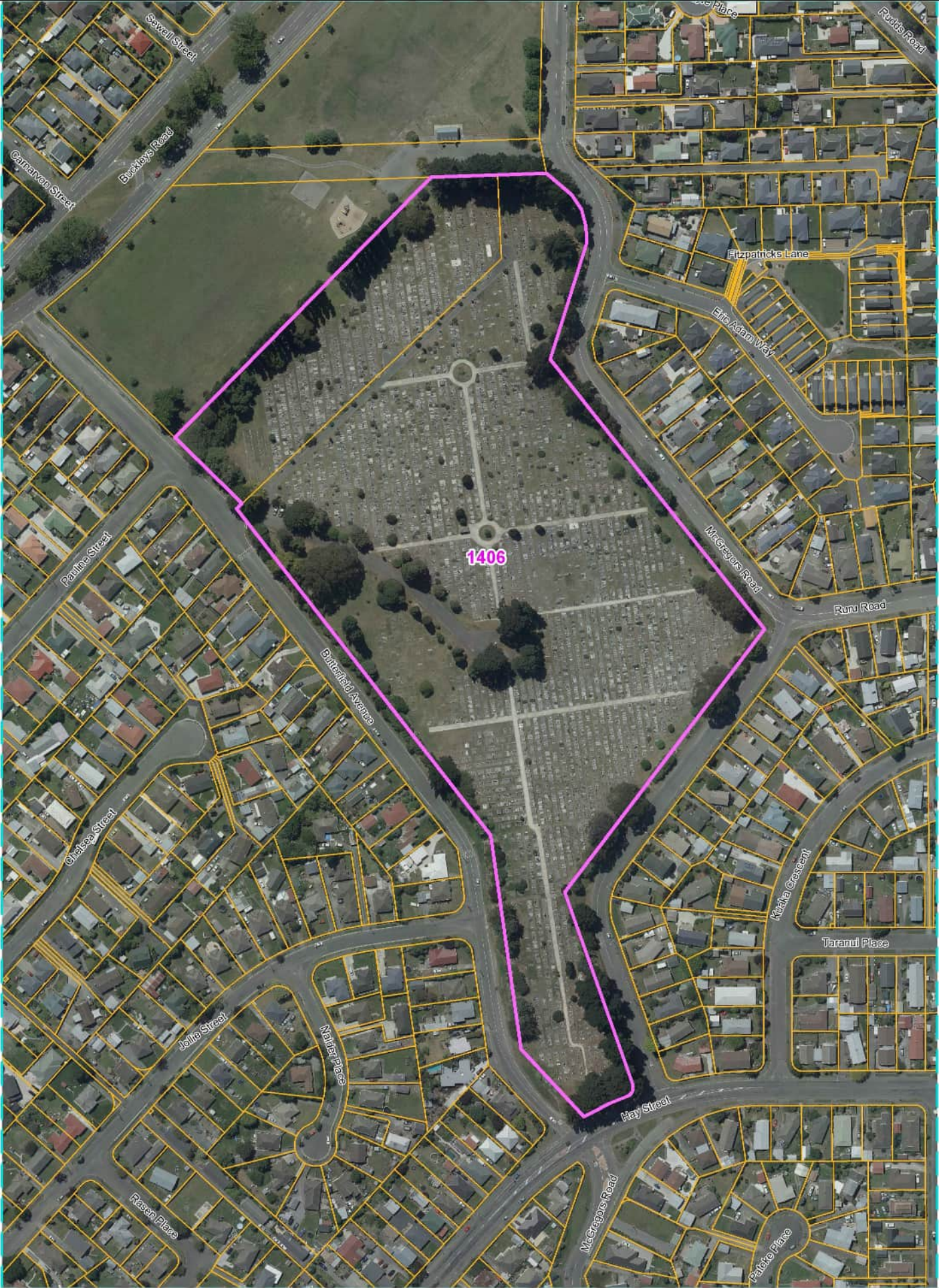
Heritage Item and Setting boundaries are a visual reference only as they have been captured against specific sets of aerial photography.
The outer boundary of the setting is deemed to follow:
a) the specific measurement(s) or description of the setting boundary where they are included on the aerial map; or if not specified, then;
b) the cadastral boundary at the nearest point to the setting boundary shown on the aerial maps
The boundaries should only be referred to in relation to these specific photos, not survey information or building plans. There may be a visual distortion due to the angle of the aerial photography.
District Plan rules do not apply for overlays extending into the Coastal Marine Area. The Coastal Marine Area is as defined in the Resource Management Act.

- Proposed Heritage Item
- Existing Heritage Item
- Proposed Heritage Setting
- Existing Heritage Setting

Scale 1 : 865
Aerial photography
captured in: 2018
Published On: 5/05/2022

Proposed Heritage Items and Settings Aerial Map

Aerial Map Reference: 817
Heritage Item Number: 1406
HeritageSetting Number:



Proposed Heritage Items and Settings Aerial Map

Aerial Map Reference: 818
Heritage Item Number: 1411
HeritageSetting Number: 644



Proposed Heritage Items and Settings Aerial Map

Aerial Map Reference: 819
Heritage Item Number: 1412
HeritageSetting Number: 644



Heritage Item and Setting boundaries are a visual reference only as they have been captured against specific sets of aerial photography.
The outer boundary of the setting is deemed to follow:
a) the specific measurement(s) or description of the setting boundary where they are included on the aerial map; or if not specified, then;
b) the cadastral boundary at the nearest point to the setting boundary shown on the aerial maps
The boundaries should only be referred to in relation to these specific photos, not survey information or building plans. There may be a visual distortion due to the angle of the aerial photography.
District Plan rules do not apply for overlays extending into the Coastal Marine Area. The Coastal Marine Area is as defined in the Resource Management Act.

- | | | | |
|---|---------------------------|---|---------------------------|
|  | Proposed Heritage Item |  | Existing Heritage Item |
|  | Proposed Heritage Setting |  | Existing Heritage Setting |

Scale 1 : 812
Aerial photography
captured in: 2018
Published On: 5/05/2022

Proposed Heritage Items and Settings Aerial Map

Aerial Map Reference: 820
Heritage Item Number: 1413
HeritageSetting Number: 644



Proposed Heritage Items and Settings Aerial Map

Aerial Map Reference: 821
Heritage Item Number: 1414
HeritageSetting Number: 644



Proposed Heritage Items and Settings Aerial Map

Aerial Map Reference: 822
Heritage Item Number: 1415
HeritageSetting Number: 644



Proposed Heritage Items and Settings Aerial Map

Aerial Map Reference: 823
Heritage Item Number: 1416
HeritageSetting Number: 644



Heritage Item and Setting boundaries are a visual reference only as they have been captured against specific sets of aerial photography.
The outer boundary of the setting is deemed to follow:
a) the specific measurement(s) or description of the setting boundary where they are included on the aerial map; or if not specified, then;
b) the cadastral boundary at the nearest point to the setting boundary shown on the aerial maps
The boundaries should only be referred to in relation to these specific photos, not survey information or building plans. There may be a visual distortion due to the angle of the aerial photography.
District Plan rules do not apply for overlays extending into the Coastal Marine Area. The Coastal Marine Area is as defined in the Resource Management Act.

	Proposed Heritage Item		Existing Heritage Item
	Proposed Heritage Setting		Existing Heritage Setting

Scale 1 : 812
Aerial photography
captured in: 2018
Published On: 5/05/2022

Proposed Heritage Items and Settings Aerial Map

Aerial Map Reference: 824
Heritage Item Number: 1417
HeritageSetting Number: 644



Heritage Item and Setting boundaries are a visual reference only as they have been captured against specific sets of aerial photography.
The outer boundary of the setting is deemed to follow:
a) the specific measurement(s) or description of the setting boundary where they are included on the aerial map; or if not specified, then;
b) the cadastral boundary at the nearest point to the setting boundary shown on the aerial maps
The boundaries should only be referred to in relation to these specific photos, not survey information or building plans. There may be a visual distortion due to the angle of the aerial photography.
District Plan rules do not apply for overlays extending into the Coastal Marine Area. The Coastal Marine Area is as defined in the Resource Management Act.

- | | |
|---|---|
|  Proposed Heritage Item |  Existing Heritage Item |
|  Proposed Heritage Setting |  Existing Heritage Setting |

Scale 1 : 823
Aerial photography
captured in: 2018
Published On: 5/05/2022

Proposed Heritage Items and Settings Aerial Map

Aerial Map Reference: 825
Heritage Item Number: 1418
HeritageSetting Number: 644



Proposed Heritage Items and Settings Aerial Map

Aerial Map Reference: 826
Heritage Item Number: 1419
HeritageSetting Number: 644



Proposed Heritage Items and Settings Aerial Map

Aerial Map Reference: 827
Heritage Item Number: 1420
HeritageSetting Number: 644



Proposed Heritage Items and Settings Aerial Map

Aerial Map Reference: 828
Heritage Item Number: 1421
HeritageSetting Number: 644



Proposed Heritage Items and Settings Aerial Map

Aerial Map Reference: 829
Heritage Item Number: 1422
HeritageSetting Number: 644



Proposed Heritage Items and Settings Aerial Map

Aerial Map Reference: 831
Heritage Item Number: 1424
HeritageSetting Number: 643



Proposed Heritage Items and Settings Aerial Map

Aerial Map Reference: 832
Heritage Item Number: 1425
HeritageSetting Number: 643



Proposed Heritage Items and Settings Aerial Map

Aerial Map Reference: 833
Heritage Item Number: 1426
HeritageSetting Number: 643



Proposed Heritage Items and Settings Aerial Map

Aerial Map Reference: 834
Heritage Item Number: 1427
HeritageSetting Number: 643



Heritage Item and Setting boundaries are a visual reference only as they have been captured against specific sets of aerial photography.

The outer boundary of the setting is deemed to follow:

- a) the specific measurement(s) or description of the setting boundary where they are included on the aerial map; or if not specified, then;
- b) the cadastral boundary at the nearest point to the setting boundary shown on the aerial maps

The boundaries should only be referred to in relation to these specific photos, not survey information or building plans. There may be a visual distortion due to the angle of the aerial photography. District Plan rules do not apply for overlays extending into the Coastal Marine Area. The Coastal Marine Area is as defined in the Resource Management Act.



Proposed Heritage Item



Proposed Heritage Setting



Existing Heritage Item



Existing Heritage Setting

Scale 1 : 825

Aerial photography
captured in: 2018

Published On: 5/05/2022

Proposed Heritage Items and Settings Aerial Map

Aerial Map Reference: 836
Heritage Item Number: 1429
HeritageSetting Number: 663



Heritage Item and Setting boundaries are a visual reference only as they have been captured against specific sets of aerial photography.
The outer boundary of the setting is deemed to follow:
a) the specific measurement(s) or description of the setting boundary where they are included on the aerial map; or if not specified, then;
b) the cadastral boundary at the nearest point to the setting boundary shown on the aerial maps
The boundaries should only be referred to in relation to these specific photos, not survey information or building plans. There may be a visual distortion due to the angle of the aerial photography.
District Plan rules do not apply for overlays extending into the Coastal Marine Area. The Coastal Marine Area is as defined in the Resource Management Act.

- | | | | |
|---|---------------------------|---|---------------------------|
|  | Proposed Heritage Item |  | Existing Heritage Item |
|  | Proposed Heritage Setting |  | Existing Heritage Setting |

Scale 1 : 937
Aerial photography
captured in: 2018
Published On: 5/05/2022

Proposed Heritage Items and Settings Aerial Map

Aerial Map Reference: 838
Heritage Item Number: 1433
HeritageSetting Number: 666



Heritage Item and Setting boundaries are a visual reference only as they have been captured against specific sets of aerial photography.
The outer boundary of the setting is deemed to follow:
a) the specific measurement(s) or description of the setting boundary where they are included on the aerial map; or if not specified, then;
b) the cadastral boundary at the nearest point to the setting boundary shown on the aerial maps
The boundaries should only be referred to in relation to these specific photos, not survey information or building plans. There may be a visual distortion due to the angle of the aerial photography.
District Plan rules do not apply for overlays extending into the Coastal Marine Area. The Coastal Marine Area is as defined in the Resource Management Act.

 Proposed Heritage Item	 Existing Heritage Item
 Proposed Heritage Setting	 Existing Heritage Setting

Scale 1 : 870
Aerial photography
captured in: 2018
Published On: 5/05/2022

Proposed Heritage Items and Settings Aerial Map

Aerial Map Reference: 840
Heritage Item Number: 1435
HeritageSetting Number: 668



Heritage Item and Setting boundaries are a visual reference only as they have been captured against specific sets of aerial photography.
The outer boundary of the setting is deemed to follow:
a) the specific measurement(s) or description of the setting boundary where they are included on the aerial map; or if not specified, then;
b) the cadastral boundary at the nearest point to the setting boundary shown on the aerial maps
The boundaries should only be referred to in relation to these specific photos, not survey information or building plans. There may be a visual distortion due to the angle of the aerial photography.
District Plan rules do not apply for overlays extending into the Coastal Marine Area. The Coastal Marine Area is as defined in the Resource Management Act.

- | | |
|---|---|
|  Proposed Heritage Item |  Existing Heritage Item |
|  Proposed Heritage Setting |  Existing Heritage Setting |

Scale 1 : 837
Aerial photography
captured in: 2018
Published On: 5/05/2022

Proposed Heritage Items and Settings Aerial Map

Aerial Map Reference: 841
Heritage Item Number: 1438
HeritageSetting Number: 670



Heritage Item and Setting boundaries are a visual reference only as they have been captured against specific sets of aerial photography. The outer boundary of the setting is deemed to follow:
a) the specific measurement(s) or description of the setting boundary where they are included on the aerial map; or if not specified, then;
b) the cadastral boundary at the nearest point to the setting boundary shown on the aerial maps
The boundaries should only be referred to in relation to these specific photos, not survey information or building plans. There may be a visual distortion due to the angle of the aerial photography.
District Plan rules do not apply for overlays extending into the Coastal Marine Area. The Coastal Marine Area is as defined in the Resource Management Act.

 Proposed Heritage Item	 Existing Heritage Item
 Proposed Heritage Setting	 Existing Heritage Setting

Scale 1:2004
Aerial photography
captured in: 2018
Published On:10/01/2022

Proposed Heritage Items and Settings Aerial Map

Aerial Map Reference: 842
Heritage Item Number: 1439
HeritageSetting Number: 671



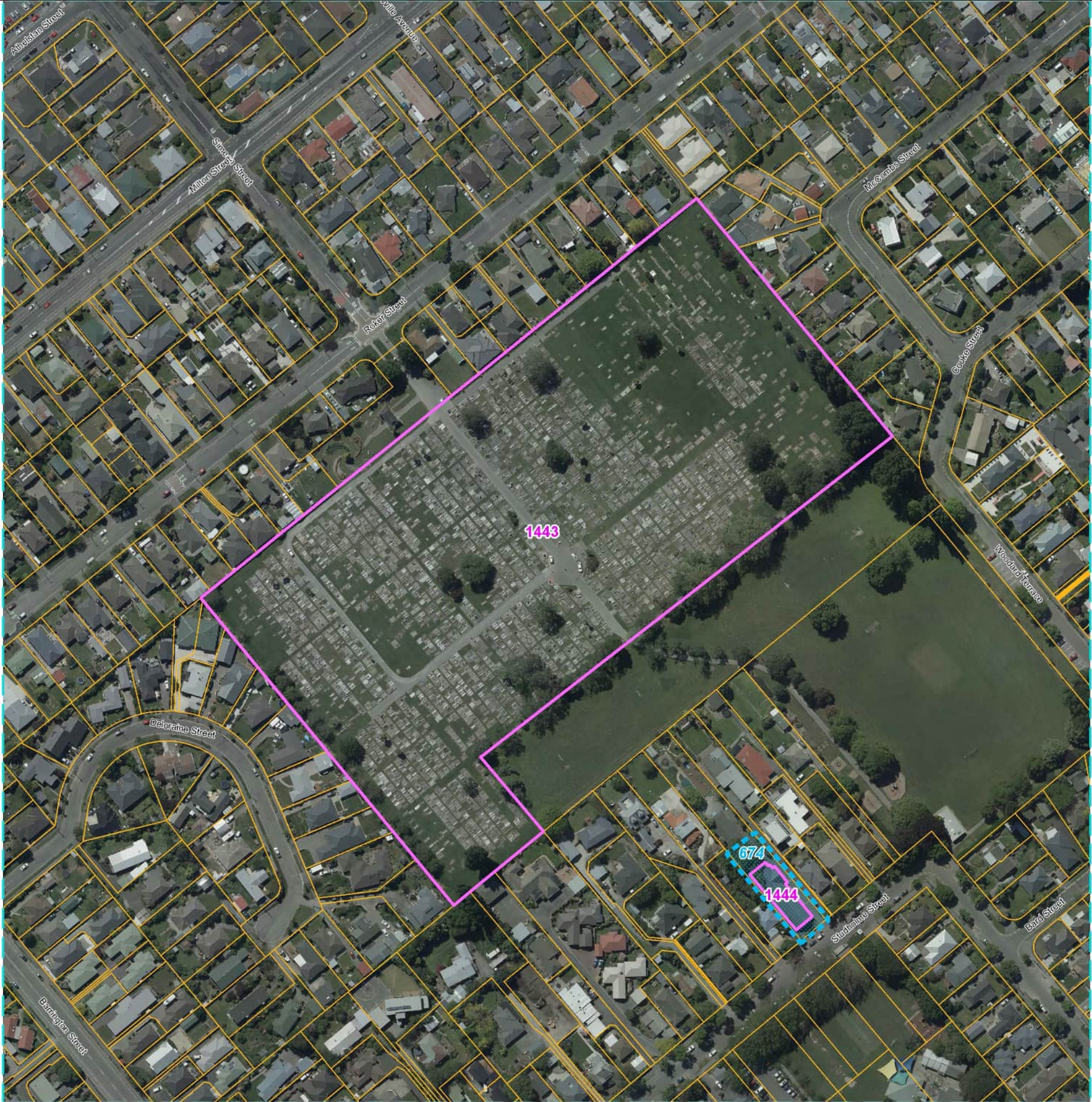
Heritage Item and Setting boundaries are a visual reference only as they have been captured against specific sets of aerial photography. The outer boundary of the setting is deemed to follow:
a) the specific measurement(s) or description of the setting boundary where they are included on the aerial map; or if not specified, then;
b) the cadastral boundary at the nearest point to the setting boundary shown on the aerial maps
The boundaries should only be referred to in relation to these specific photos, not survey information or building plans. There may be a visual distortion due to the angle of the aerial photography.
District Plan rules do not apply for overlays extending into the Coastal Marine Area. The Coastal Marine Area is as defined in the Resource Management Act.

 Proposed Heritage Item	 Existing Heritage Setting
 Proposed Heritage Setting	 Existing Heritage Item

Scale 1 : 852
Aerial photography
captured in: 2018
Published On: 5/05/2022

Proposed Heritage Items and Settings Aerial Map

Aerial Map Reference: 846
Heritage Item Number: 1443
HeritageSetting Number:



Heritage Item and Setting boundaries are a visual reference only as they have been captured against specific sets of aerial photography.
The outer boundary of the setting is deemed to follow:
a) the specific measurement(s) or description of the setting boundary where they are included on the aerial map; or if not specified, then;
b) the cadastral boundary at the nearest point to the setting boundary shown on the aerial maps
The boundaries should only be referred to in relation to these specific photos, not survey information or building plans. There may be a visual distortion due to the angle of the aerial photography.
District Plan rules do not apply for overlays extending into the Coastal Marine Area. The Coastal Marine Area is as defined in the Resource Management Act.

	Proposed Heritage Item		Existing Heritage Item
	Proposed Heritage Setting		Existing Heritage Setting

Scale 1 : 2,184
Aerial photography
captured in: 2018
Published On: 5/05/2022

Proposed Heritage Items and Settings Aerial Map

Aerial Map Reference: 847
Heritage Item Number: 1445
HeritageSetting Number: 644



Heritage Item and Setting boundaries are a visual reference only as they have been captured against specific sets of aerial photography.
The outer boundary of the setting is deemed to follow:
a) the specific measurement(s) or description of the setting boundary where they are included on the aerial map; or if not specified, then;
b) the cadastral boundary at the nearest point to the setting boundary shown on the aerial maps
The boundaries should only be referred to in relation to these specific photos, not survey information or building plans. There may be a visual distortion due to the angle of the aerial photography.
District Plan rules do not apply for overlays extending into the Coastal Marine Area. The Coastal Marine Area is as defined in the Resource Management Act.

- | | | | |
|---|---------------------------|---|---------------------------|
|  | Proposed Heritage Item |  | Existing Heritage Item |
|  | Proposed Heritage Setting |  | Existing Heritage Setting |

Scale 1 : 804
Aerial photography
captured in: 2018
Published On: 5/05/2022

Proposed Heritage Items and Settings Aerial Map

Aerial Map Reference: 848
Heritage Item Number: 1446
HeritageSetting Number: 675



Proposed Heritage Items and Settings Aerial Map

Aerial Map Reference: 849
Heritage Item Number: 1447
HeritageSetting Number: 675



Proposed Heritage Items and Settings Aerial Map

Aerial Map Reference: 850
Heritage Item Number: 1448
HeritageSetting Number: 675



Proposed Heritage Items and Settings Aerial Map

Aerial Map Reference: 851
Heritage Item Number: 1449
HeritageSetting Number: 675



Heritage Item and Setting boundaries are a visual reference only as they have been captured against specific sets of aerial photography.
The outer boundary of the setting is deemed to follow:
a) the specific measurement(s) or description of the setting boundary where they are included on the aerial map; or if not specified, then;
b) the cadastral boundary at the nearest point to the setting boundary shown on the aerial maps
The boundaries should only be referred to in relation to these specific photos, not survey information or building plans. There may be a visual distortion due to the angle of the aerial photography.
District Plan rules do not apply for overlays extending into the Coastal Marine Area. The Coastal Marine Area is as defined in the Resource Management Act.

- | | | | |
|---|---------------------------|---|---------------------------|
|  | Proposed Heritage Item |  | Existing Heritage Item |
|  | Proposed Heritage Setting |  | Existing Heritage Setting |

Scale 1 : 832
Aerial photography
captured in: 2018
Published On:12/05/2022

Proposed Heritage Items and Settings Aerial Map

Aerial Map Reference: 852
Heritage Item Number: 1450
HeritageSetting Number: 675



Heritage Item and Setting boundaries are a visual reference only as they have been captured against specific sets of aerial photography.

The outer boundary of the setting is deemed to follow:

- a) the specific measurement(s) or description of the setting boundary where they are included on the aerial map; or if not specified, then;
- b) the cadastral boundary at the nearest point to the setting boundary shown on the aerial maps

The boundaries should only be referred to in relation to these specific photos, not survey information or building plans. There may be a visual distortion due to the angle of the aerial photography. District Plan rules do not apply for overlays extending into the Coastal Marine Area. The Coastal Marine Area is as defined in the Resource Management Act.

Proposed Heritage Item
Proposed Heritage Setting

Existing Heritage Item
Existing Heritage Setting

Scale 1 : 829
Aerial photography
captured in: 2018
Published On: 13/05/2022

Proposed Heritage Items and Settings Aerial Map

Aerial Map Reference: 853
Heritage Item Number: 1451
HeritageSetting Number: 675



Heritage Item and Setting boundaries are a visual reference only as they have been captured against specific sets of aerial photography.
The outer boundary of the setting is deemed to follow:
a) the specific measurement(s) or description of the setting boundary where they are included on the aerial map; or if not specified, then;
b) the cadastral boundary at the nearest point to the setting boundary shown on the aerial maps
The boundaries should only be referred to in relation to these specific photos, not survey information or building plans. There may be a visual distortion due to the angle of the aerial photography.
District Plan rules do not apply for overlays extending into the Coastal Marine Area. The Coastal Marine Area is as defined in the Resource Management Act.

 Proposed Heritage Item	 Existing Heritage Item
 Proposed Heritage Setting	 Existing Heritage Setting

Scale 1 : 809
Aerial photography
captured in: 2018
Published On:13/05/2022

Proposed Heritage Items and Settings Aerial Map

Aerial Map Reference: 854
Heritage Item Number: 1452
HeritageSetting Number: 675



Heritage Item and Setting boundaries are a visual reference only as they have been captured against specific sets of aerial photography.
The outer boundary of the setting is deemed to follow:
a) the specific measurement(s) or description of the setting boundary where they are included on the aerial map; or if not specified, then;
b) the cadastral boundary at the nearest point to the setting boundary shown on the aerial maps
The boundaries should only be referred to in relation to these specific photos, not survey information or building plans. There may be a visual distortion due to the angle of the aerial photography.
District Plan rules do not apply for overlays extending into the Coastal Marine Area. The Coastal Marine Area is as defined in the Resource Management Act.

- | | | | |
|---|---------------------------|---|---------------------------|
|  | Proposed Heritage Item |  | Existing Heritage Item |
|  | Proposed Heritage Setting |  | Existing Heritage Setting |

Scale 1 : 834
Aerial photography
captured in: 2018
Published On: 5/05/2022

Proposed Heritage Items and Settings Aerial Map

Aerial Map Reference: 855
Heritage Item Number: 1453
HeritageSetting Number: 675



Proposed Heritage Items and Settings Aerial Map

Aerial Map Reference: 856
Heritage Item Number: 1444
HeritageSetting Number: 674

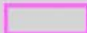



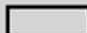

Heritage Item and Setting boundaries are a visual reference only as they have been captured against specific sets of aerial photography.

The outer boundary of the setting is deemed to follow:

- the specific measurement(s) or description of the setting boundary where they are included on the aerial map; or if not specified, then;
- the cadastral boundary at the nearest point to the setting boundary shown on the aerial maps

The boundaries should only be referred to in relation to these specific photos, not survey information or building plans. There may be a visual distortion due to the angle of the aerial photography. District Plan rules do not apply for overlays extending into the Coastal Marine Area. The Coastal Marine Area is as defined in the Resource Management Act.

 Proposed Heritage Item
 Proposed Heritage Setting

 Existing Heritage Item
 Existing Heritage Setting

Scale 1 : 917
Aerial photography
captured in: 2018
Published On: 5/05/2022

Proposed Heritage Items and Settings Aerial Map

Aerial Map Reference: 857
Heritage Item Number: 1455
HeritageSetting Number: 679



Heritage Item and Setting boundaries are a visual reference only as they have been captured against specific sets of aerial photography.
The outer boundary of the setting is deemed to follow:
a) the specific measurement(s) or description of the setting boundary where they are included on the aerial map; or if not specified, then;
b) the cadastral boundary at the nearest point to the setting boundary shown on the aerial maps
The boundaries should only be referred to in relation to these specific photos, not survey information or building plans. There may be a visual distortion due to the angle of the aerial photography.
District Plan rules do not apply for overlays extending into the Coastal Marine Area. The Coastal Marine Area is as defined in the Resource Management Act.

	Proposed Heritage Item		Existing Heritage Item
	Proposed Heritage Setting		Existing Heritage Setting

Scale 1 : 829
Aerial photography
captured in: 2018
Published On: 12/07/2022

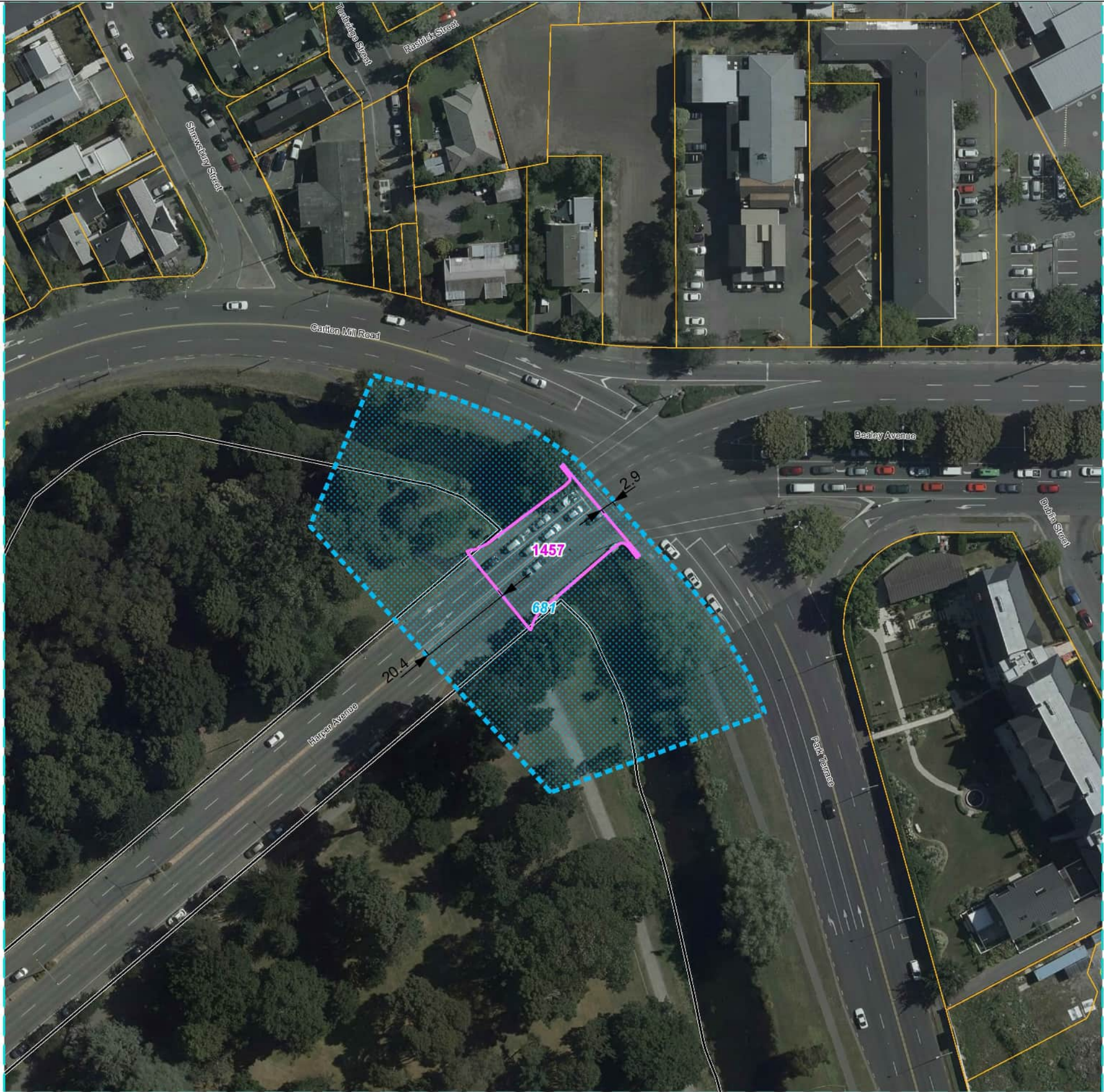
Proposed Heritage Items and Settings Aerial Map

Aerial Map Reference: 858
Heritage Item Number: 1456
HeritageSetting Number: 680



Proposed Heritage Items and Settings Aerial Map

Aerial Map Reference: 859
Heritage Item Number: 1457
HeritageSetting Number: 681



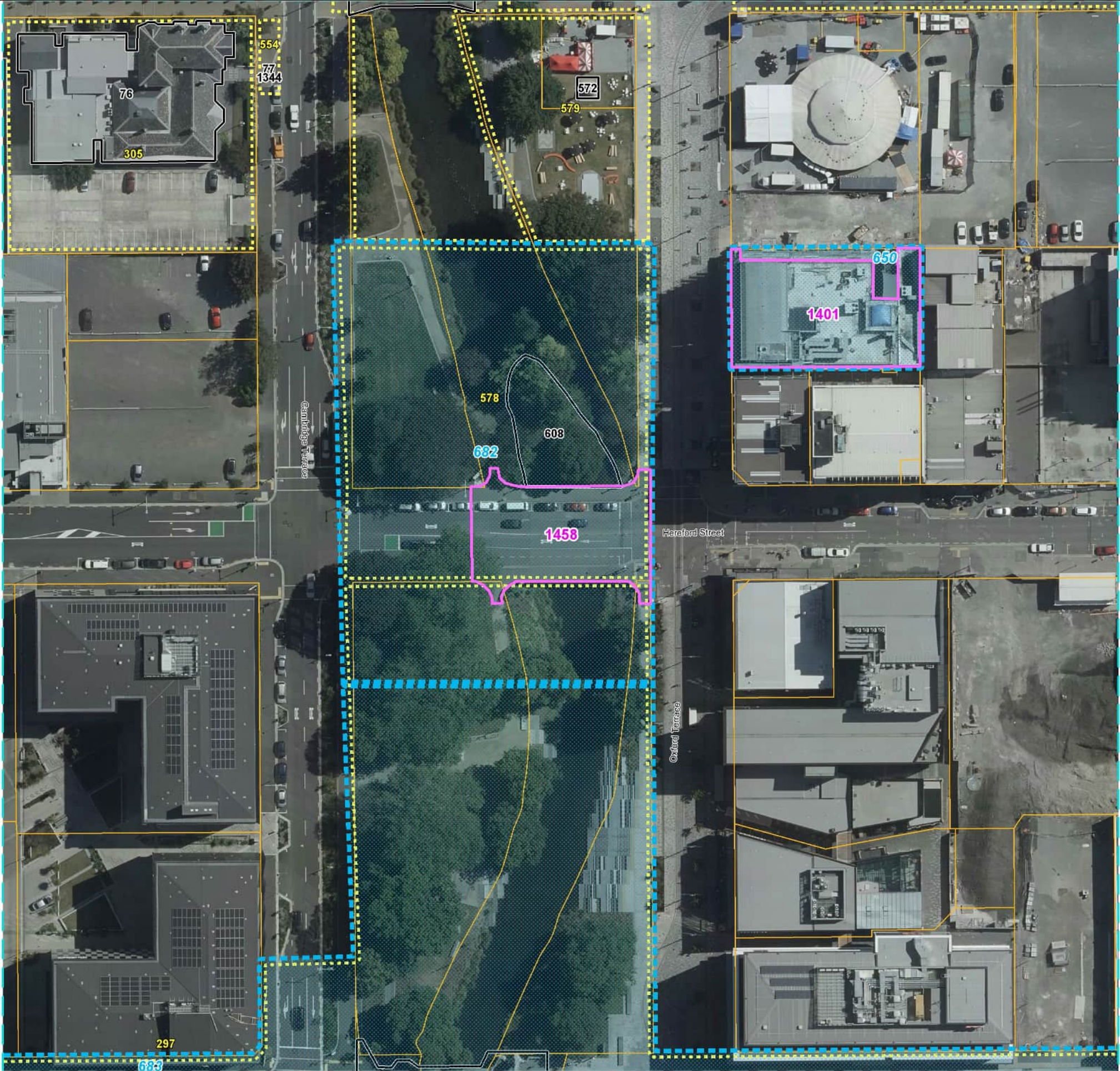
Heritage Item and Setting boundaries are a visual reference only as they have been captured against specific sets of aerial photography.
The outer boundary of the setting is deemed to follow:
a) the specific measurement(s) or description of the setting boundary where they are included on the aerial map; or if not specified, then;
b) the cadastral boundary at the nearest point to the setting boundary shown on the aerial maps
The boundaries should only be referred to in relation to these specific photos, not survey information or building plans. There may be a visual distortion due to the angle of the aerial photography.
District Plan rules do not apply for overlays extending into the Coastal Marine Area. The Coastal Marine Area is as defined in the Resource Management Act.

- | | |
|---|---|
|  Proposed Heritage Item |  Existing Heritage Item |
|  Proposed Heritage Setting |  Existing Heritage Setting |

Scale 1 : 923
Aerial photography
captured in: 2018
Published On: 12/07/2022

Proposed Heritage Items and Settings Aerial Map

Aerial Map Reference: 860
Heritage Item Number: 1458
HeritageSetting Number: 682



Heritage Item and Setting boundaries are a visual reference only as they have been captured against specific sets of aerial photography.
The outer boundary of the setting is deemed to follow:
a) the specific measurement(s) or description of the setting boundary where they are included on the aerial map; or if not specified, then;
b) the cadastral boundary at the nearest point to the setting boundary shown on the aerial maps
The boundaries should only be referred to in relation to these specific photos, not survey information or building plans. There may be a visual distortion due to the angle of the aerial photography.
District Plan rules do not apply for overlays extending into the Coastal Marine Area. The Coastal Marine Area is as defined in the Resource Management Act.

- | | | | |
|--|---------------------------|--|---------------------------|
| | Proposed Heritage Item | | Existing Heritage Item |
| | Proposed Heritage Setting | | Existing Heritage Setting |

Scale 1 : 897
Aerial photography
captured in: 2018
Published On: 7/07/2022

Proposed Heritage Items and Settings Aerial Map

Aerial Map Reference: 861
Heritage Item Number: 1459
HeritageSetting Number:

