

## Roto Kohatu Reserve Draft Management Plan – June 2022

ID	We welcome your submission to the Roto Kohatu Reserve Draft Management Plan	We welcome your comments on the Roto Kohatu Reserve Draft Development Plan	Yes, I would like to speak to the Hearings Panel about my submission to the management plan	Name - Organisation
44890	<p>Aoraki Dragons appreciates the lengths CCC have gone to, to "accommodate" our work in providing Dragon Boat training and racing to our rohe. In return we are committed to sharing the spaces with other groups and the public.</p> <p>As per our comment in the Development Plan, we see that we will use Lake Rua as a key site for our teams training, and also for many of our events. We have grown a "Secondary Schools Program" that runs from the start of the school year and gives about 15 teams from 8 or more schools training sessions. This lake is key to that program as it is safe, clean and accessible to the schools (especially for the likes of Kaiapoi, Rangiora, Oxford Area School, Christchurch Adventist, Papanui HS, Rangi Ruru and Villa Maria.</p> <p>Aoraki are running some Corporate "Give it a Go" days over the season as well, sometimes on a week day so that we make good use of the facility.</p> <p>Dragon Boating is particularly strong in North Canterbury (many of our permanent teams are in the North West city or neighbouring towns), but Lake Pegasus is closed (toxic algal bloom) for most of summer, so training and events are generally moved at short notice. Likewise Kaiapoi River is at risk of contaminations such as the oil runoff from the tragic fire at Sutton Tools factory last week. Some teams train in the Avon, but on a good day that is a health hazard, and after rainfall and flooding, we warm paddlers off the river. So Lake Rua is strategically key to us, and we see our use growing, Council willing.</p> <p>As such we accept our responsibility in the role of managing the area. For example, if a building were available, we would see us sharing in running costs for power and security. And Aoraki have been proactive in setting up booking systems for events on the lake.</p>	<p>As above, Aoraki Dragons have been able to grow the sport of Dragon Boating in Christchurch with the help of City Council and the Rangers. We particularly value their support in our use of "Management Area A" being Lake Rua and it's surrounds.</p> <p>Specifically in this plan, we appreciate the proposals to:</p> <p>provide a new vehicle entrance into the reserve off Outlook Place. Many of our paddlers already park on Outlook Place and walk in, which helps preserve the metal track (which, as you know, gets very rutted). The direct access to Lake Rua is a key enabler for us providing this sporting opportunity. Thanks for looking into additional sites for overflow car parking for events this can be a challenge on days that the public use the beach and foreshore while we have boats on the water.</p> <p>Remediate the northern edge of Lake Rua to remove rubble, create a beach to improve access. Our boats get badly damaged when we launch and retrieve them. Paddlers are at high risk of slips, trips and falls, especially after a hard training session or race.</p> <p>Unlike my friend Simon Rutherford from the Sailing School, Dragon Boaters prefer to have the tree plantings, to cut down the wind. But we understand sailors' needs for good steady wind on the lake. So we are agnostic to tree plantings and so on.</p> <p>Regarding the sanctuary area for nesting birds in the SE corner, we do try to keep clear. But on Racing days, we set up our start line in that corner. It looks like you are extending item 13 Sanctuary and changing items 11 fishing locations. We rely on them as a place for our race starter. I wonder if you might consider providing us a literal "platform"? For example, can item 9 "New Diving platform" be installed about half way along the causeway? You also mention jetty, which would be really helpful (to allow our 15m long boats to back up to the causeway). Our starter could stand on there, and we could tie the start line rope off it. Otherwise, we could use one of the reinstated Fishing Platforms along the causeway.</p> <p>Of course we love the proposal for a "shared-use sports facility building and / or other structure with an adjoining carpark is proposed at the northern end of Lake Rua to facilitate aquatic recreation activities". The container has served us well, but it would be great to have a building that would give better protection, particularly if it had mains power (we would be happy to cover metered consumption).</p>	No	Noel Anderton Aoraki Dragon Boat Association Inc
45409 & 45442	Please see attached submission	Please see attached submission	Yes	Amanda Dodd Cancer Society
45496	See attachment		Yes	Scotty Moore Canterbury Jet Sports Club

## Roto Kohatu Reserve Draft Management Plan – June 2022

ID	We welcome your submission to the Roto Kohatu Reserve Draft Management Plan	We welcome your comments on the Roto Kohatu Reserve Draft Development Plan	Yes, I would like to speak to the Hearings Panel about my submission to the management plan	Name - Organisation
45269	Please find submission attached.	Please find submission attached.	Yes	Felicity Blackmore Christchurch International Airport Limited
44804	<p>Christchurch Model Yacht Club (1898) Incorporated (CMYC) has an interest in continuing to have access to Lake Rua for the purpose of model yacht racing.</p> <p>This is in Management Area A.</p> <p>Model yacht racing is an appropriate activity in areas designated as Recreation Reserve.</p> <p>CMYC is a regular (but not frequent) user of Lake Rua, mainly during weekends in winter months.</p> <p>CMYC currently stores necessary equipment such as rescue dinghy and marker buoys in a container close to the edge of the lake.</p> <p>CMYC previously had a fixed building at The Groynes. Excessive weed and other activities at The Groynes resulted in CCC facilitating our relocation to Lake Rua, chiefly by supplying and locating a shipping container.</p> <p>CMYC wishes to continue free and unhindered access to Lake Rua for scheduled yacht racing events.</p> <p>CMYC would consider an agreement which gives us rights to continue our access and use of Lake Rua.</p> <p>CMYC seeks an agreement which delivers at least the equivalent of our current arrangement, primarily consisting of storage facilities and a right to sail at agreed times.</p> <p>CMYC notes that our use is infrequent, and during times of infrequent use by the public. Our activity presents close to zero risk to public activities such as swimming and boating, although these activities in fact can present a risk to our boats. For this reason we choose to organise events at times when there is little or no public activity, such as winter weekends.</p>	<p>CMYC notes that “the vision for Rota Kohatu is for the reserve to be “developed and managed as an aquatic playground for a wide range of organised and informal water-based recreation and sport activities while supporting the biodiversity and amenity values of the area.””</p> <p>Model Yacht Racing contributes to this vision by extending beyond the traditional uses of such public facilities and water sports, both in activity and time of year.</p> <p>Model yacht racing has a low environmental impact with regard to pollution, noise and water wake.</p> <p>CMYC strictly applies the MPI ‘Check/clean/dry’ protocols when moving between waterways.</p> <p>Model Yacht Racing participants are often elderly, and the sport gives them an opportunity to meet and compete that is not available from many other water sports. Accommodating model yacht racing enhances the diversity of the participating public.</p> <p>Management Area A is well suited to model yacht racing due to it’s easy access by car and foot, freedom from weed, and relatively minimal effects by wind-breaking trees. Appropriate beach access/slipway to allow easy and safe model yacht launching should be included in the developed shore access plan.</p> <p>CMYC looks forward to continued free enjoyment of Lake Rua under the proposed Management Plan.</p>	No	Al Ross Christchurch Model Yacht Club 1898 Inc

## Roto Kohatu Reserve Draft Management Plan – June 2022

ID	We welcome your submission to the Roto Kohatu Reserve Draft Management Plan	We welcome your comments on the Roto Kohatu Reserve Draft Development Plan	Yes, I would like to speak to the Hearings Panel about my submission to the management plan	Name - Organisation
	<p>CMYC currently has control of a shipping container (a removable structure) and requests continued access to the container, at its current location, unless alternative storage becomes available, on site.</p> <p>We note that the Management Plan proposes to establish a multi-use facility. If CCC requires the removal of the CMYC container, secure, accessible storage in the multi-use facility needs to be provided on the same basis as the container (i.e. free of charge). Accommodation for the inflatable dinghy, buoys and weights, etc is required.</p> <p>This would honour the spirit of our current arrangement where we have relocated from the permanent building at The Groynes with agreement and assistance from CCC.</p>			
45187	<p>The Roto Kohatu Reserve Management Plan</p> <p>To whom it may concern,</p> <p>The Outdoor Swimmers Club (OSC) appreciates the opportunity to make a submission regarding the draft Roto Kōhatu Reserve Management Plan which is currently being developed by Christchurch City Council (CCC).</p> <p>The OSC agree with the statement in the management plan that the Roto Kōhatu Reserve is one of region's top fresh water sites, popular with water sports user groups and the public.</p> <p>The OSC strongly supports the need for the development of the</p>	<p>The Roto Kohatu Reserve Development Plan</p> <p>To whom it may concern,</p> <p>The Outdoor Swimmers Club (OSC) appreciates the opportunity to make a submission regarding the draft Roto Kōhatu Reserve Development Plan which is currently being developed by Christchurch City Council (CCC).</p> <p>The OSC specifies the following as priorities for the development plan:</p> <p>Water Safety</p> <ul style="list-style-type: none"> <li>• 'Remediation works are proposed at the northern edge of Lake Rua to remove rubble, create a beach to improve access and construct a jetty and / or diving pontoon'. We would respectfully</li> </ul>	No	<p>David Brown Christchurch Outdoor Swimming Club</p>

## Roto Kohatu Reserve Draft Management Plan – June 2022

ID	We welcome your submission to the Roto Kohatu Reserve Draft Management Plan	We welcome your comments on the Roto Kohatu Reserve Draft Development Plan	Yes, I would like to speak to the Hearings Panel about my submission to the management plan	Name - Organisation
	<p>reserve management plan and believe that if the process is well handled, the plan will provide a valuable preparatory framework for the long-term future of the reserve, including:</p> <ul style="list-style-type: none"> <li>• establishing a coordinated and inclusive approach to the management of all current activities in the reserve, including water-based activities (such as outdoor swimming) in Lake Tahi and Lake Rua</li> <li>• enabling a coordinated and planned approach to the improvements being undertaken on the reserve, such as the new toilet facilities, car park, improved access to the reserve as well as carefully managed and co-ordinated event planning</li> <li>• providing a mechanism for the CCC to work collaboratively and on an ongoing basis with the OSC and other Roto Kōhatu Reserve user groups to ensure issues and concerns are considered and understood</li> </ul> <p>In addition to the above points, the OSC have also highlighted below, specific issues that need to be considered as part of the management plan.</p> <p>Water Quality</p> <ul style="list-style-type: none"> <li>• The OSC support the comments made during earlier engagement by CCC, regarding the need to protect the environment, especially water quality.</li> <li>• Specific issues for OSC include the need to preserve and enhance the water quality in both Lake Tahi and Lake Rua to a standard that it can continue to be used in the longterm for swimming.</li> <li>• The management plan should also be used to understand and establish the levels of use Lake Tahi and Lake Rua can support in the long-term and how these uses will be managed to ensure water quality is maintained (and improved).</li> </ul> <p>Safety</p> <ul style="list-style-type: none"> <li>• An important area of concern for the OSC relates to safety.</li> <li>• The OSC considers that the management plan is an important</li> </ul>	<p>suggest that remediation works should be prioritised over construction of new jetties / platforms.</p> <p>Maintenance and Management</p> <ul style="list-style-type: none"> <li>• ‘A new vehicle and pedestrian entrance into the reserve off Outlook Place is proposed to provide more direct access to Lake Rua. The current entrance off Sawyers Arms Road is to be stopped at the car park. The driveway over the landfill hill will be closed for public access.’ This is a high priority. The condition of the current road access has deteriorated significantly in recent months with excessive use, regular misuse and a lack of upkeep. As pointed out by council staff, the current road is abused by some users and costly remediation is quickly ruined. A new, shorter access route would alleviate some misuse and provide much safer access for reserve users.</li> <li>• Rubbish: As regular responsible users of the reserve, members of the OSC have been frustrated and annoyed with the considerable amount of rubbish that is regularly left around the shores of the lakes, in the car parks and in the water. The CCC’s current policy of expecting / encouraging reserve users to take their litter away with them may be practised by some but a significant number of people leave a substantial amount of litter at the reserve. Installing and regularly emptying rubbish bins may not be current CCC policy but in the case of Roto Kōhatu Reserve it is absolutely necessary to protect water quality as a great deal of the litter ends up in the lake.</li> <li>• Maintaining toilet facilities: Over the summer period, due to the high demand and use, it may be necessary to increase the number of times toilet blocks are serviced and cleaned. OSC members reported on numerous occasions that facilities were unclean and appeared to be not to be regularly serviced. It has been noted that the lights in the toilet blocks are left on permanently (24 hours a day, 7 days a week). This doesn’t fit well with energy efficiency requirements. It also attracts insects to inhabit the toilets blocks. It is suggested motion lights be installed.</li> <li>• ‘A shared-use sports facility building and / or other structure with an adjoining carpark is proposed at the northern end of Lake Rua to facilitate aquatic recreation activities’: We appreciate that this is an aspirational goal however, as the controlling body for the reserve, we would recommend and support this idea and look forward to being part of discussions aimed at bringing this goal to fruition.</li> </ul> <p>Anti-social Behaviour</p> <ul style="list-style-type: none"> <li>• Security cameras /surveillance: The installation and 24 hour monitoring of a CCTV system for the key areas is fundamental to the future operation and success of the reserve and the activities that take place there. The increased misuse and anti-social behaviour that has occurred regularly over the past summers have meant that many members of the general public and those holding organised activities have experienced issues. This situation is likely to become more pronounced as the reserve becomes better known and more popular. Along with monitored surveillance, some form of responsive manned security needs to be in place over the height of summer. While this would be a cost to CCC, the savings from alleviating acts of vandalism and reacting quickly to other forms of anti-social behaviour would offset the cost of repairs and consolidate the level of good will with the general public and regular reserve users.</li> </ul>		

## Roto Kohatu Reserve Draft Management Plan – June 2022

ID	We welcome your submission to the Roto Kohatu Reserve Draft Management Plan	We welcome your comments on the Roto Kohatu Reserve Draft Development Plan	Yes, I would like to speak to the Hearings Panel about my submission to the management plan	Name - Organisation
	<p>tool with which the CCC can work with all lake users to ensure relevant Health and Safety issues are understood and correct procedures are followed and clearly communicated.</p> <ul style="list-style-type: none"> <li>• There is specific concern that as the reserve, including Lake Tahī and Lake Rua, becomes increasingly popular, particularly during high season, the conflict between users and their specific needs with increase. The management plan must clearly articulate how those conflicts and competing demands will be managed in the long term.</li> <li>• The OSC would also like to understand the extent to which the management plan is to be used to manage/control the uses/activities on Lake Tahī and Lake Rua, given we understand that the lakes are currently managed by a Harbour Master on behalf of Environment Canterbury.</li> </ul> <p>Maintenance and Management</p> <ul style="list-style-type: none"> <li>• Current access to Lake Rua via the long, unsealed gravel driveway from Sawyer's Arms Road, extending across the site is proving increasingly hazardous as the road's condition deteriorates with excessive use, regular misuse and a lack of upkeep. Better access via a new road from Greywacke Road and / or Outlook Place should be a priority.</li> <li>• In the context of the conflicting uses and increased demand, the OSC would also like the management plan to clearly indicate how the use of Lake Rua would be better coordinated and communicated with a view to assuring long-term guaranteed access for clubs and user groups and to ensure fair and equitable use for all users.</li> <li>• The OSC would also like to see the management plan used to clearly establish appropriate management and maintenance regimes for the new facilities associated with the reserve eg. cleaning of the toilets and litter collection. There are recent and regular examples where these facilities have not been maintained to appropriate standards.</li> </ul> <p>Anti-social Behaviour</p> <ul style="list-style-type: none"> <li>• The OSC strongly support the comments made during earlier engagement by CCC regarding the need to protect and manage</li> </ul>	<ul style="list-style-type: none"> <li>• During recent discussion, it was confirmed that CCC do not appear to have a close liaison with the NZ Police and therefore only limited knowledge of the level or frequency of anti-social behaviour that occurs, especially during the summer months, at the reserve. It is strongly suggested that establishing closer links, sharing information and actively working together to reduce the incidents of anti-social behaviour at the reserve be a priority.</li> </ul> <p>Development of a Roto Kohatu Reserve Master Plan</p> <p>The OSC recommends that a masterplan be developed as part of the management and development plan process to consider future development of the reserve and provide the CCC and all users with a coordinated view of all projects connected with the reserve.</p> <p>Establishment of Roto Kohatu Reserve Users Forum</p> <ul style="list-style-type: none"> <li>• The OSC have initiated discussions with other key user groups of the reserve and will continue to progress the establishment of this forum over the next few months. Representation from the CCC at a user's forum would be mutually beneficial for staff involved with the operation of the reserve as well as user groups.</li> </ul>		

## Roto Kohatu Reserve Draft Management Plan – June 2022

ID	We welcome your submission to the Roto Kohatu Reserve Draft Management Plan	We welcome your comments on the Roto Kohatu Reserve Draft Development Plan	Yes, I would like to speak to the Hearings Panel about my submission to the management plan	Name - Organisation
	<p>access to the reserve.</p> <ul style="list-style-type: none"> <li>• The OSC strongly support the notion of the need to dissuade and manage anti-social behaviour that occurs on the reserve.</li> <li>• Of particular concern are the regular incidences involving alcohol consumption around water and vehicle nuisance on access ways, parking areas and green spaces. These forms of behaviour appear to have increased following the installation of the new car and other facilities. The OSC would like to understand to what extent the management plan would be able to ensure enforcement of a liquor ban and other bylaws available to the CCC to manage such anti-social behaviour.</li> <li>• In addition, we endorse all measures that would be taken for addressing Crime Prevention through Environmental Design (CPTED). We support the idea of carrying out an audit to understand the issues pertaining to the site and to inform the management plan development and other reserve related planning and design processes, such as the masterplan suggested below.</li> </ul> <p>Development of a Roto Kohatu Reserve Master Plan</p> <ul style="list-style-type: none"> <li>• We recommend that a masterplan be developed as part of the management plan process to consider future development of the reserve and provide the CCC and all users with a coordinated view of all projects, including new facilities. The masterplan will be a useful tool for the CCC to communicate the long-term vision for the reserve and its long-term management, development and use.</li> </ul> <p>Reserve Classification</p> <ul style="list-style-type: none"> <li>• As part of the current engagement process, we understand that the CCC is considering changing the status of the Roto Kōhatu Reserve, which is currently classified as Recreation Reserve under the Reserves Act 1977. The OSC is keen to understand the reasons behind this reclassification and how this may affect the user groups and the management plan.</li> <li>• We suggest that a meeting is held between the CCC, the OSC and other interested parties to further understand the intention and</li> </ul>			

## Roto Kohatu Reserve Draft Management Plan – June 2022

ID	We welcome your submission to the Roto Kohatu Reserve Draft Management Plan	We welcome your comments on the Roto Kohatu Reserve Draft Development Plan	Yes, I would like to speak to the Hearings Panel about my submission to the management plan	Name - Organisation
	implications of this reclassification.			
45443	Please see attached submission	Please see attached submission	Yes	Chris Ford Disabled Persons Assembly
45446 & 45448	See attached pdf	See attached pdf	Yes	Simon Rutherford KORE Limited
45426 45111 re-sent as one submission	<p>Kia ora koutou,</p> <p>I'm Jade Johnson, chair of the Mainland Canoe Polo Association (MCPA). MCPA has been present at the Roto Kohatu reserve since 2003, having been a major part of the sport Canoe Polo in the South Island since then. Hosting international tournaments (Oceania Championships 2013) and various grades of the yearly National League, Roto Kohatu is much more than just a local destination for our sport. In saying that, the local appetite for Canoe Polo continues to grow, during the height of the season being used 6 to 7 days a week for training and competitions for our local, national league players and international athletes.</p> <p>MANAGEMENT PLAN:</p> <p>2.4 Access, circulation and parking: Objective 2 CONDITIONAL SUPPORT Consideration to be given to parking for large events</p> <p>Policy 1 and 3 VERY STRONGLY SUPPORT No traffic past the canoe polo area will greatly enhance safety</p> <p>2.5 Buildings and structures: Policy 6 and 7 CONDITIONAL SUPPORT</p>	<p>DEVELOPMENT PLAN:</p> <p>Reserve entrance and entrance gate 15, 21 STRONGLY SUPPORT Traffic currently presents a significant hazard on busy days. With the need to cross the road to access equipment storage, removing the majority of vehicles from the road would make it much safer.</p> <p>Planting 3, 22 STRONGLY SUPPORT Mature trees act as a windbreak which leads to significant improvement to gameplay in windy conditions.</p> <p>Underpass and vehicle bay 25 CONDITIONAL SUPPORT It's likely with the continuing growth of the sport, the need for overflow parking during events will increase, so I suggest keeping the carpark at the top of the landfilled hill.</p> <p>Car parks and Storage facility Lake Tahī 5, 14 16, 18 STRONGLY SUPPORT Currently there are two containers of storage space needed for the gear MCPA owns and is used by a large number of groups throughout the year. With plans to increase the amount of equipment we own and with the court capacity soon to double, storage space is fast becoming an issue. There will also be a need for increased parking, particularly if we host larger regional/national/international events.</p> <p>Canoe Polo extension 17 VERY STRONGLY SUPPORT</p>	No	Jade Johnson Mainland Canoe Polo Association

## Roto Kohatu Reserve Draft Management Plan – June 2022

ID	We welcome your submission to the Roto Kohatu Reserve Draft Management Plan	We welcome your comments on the Roto Kohatu Reserve Draft Development Plan	Yes, I would like to speak to the Hearings Panel about my submission to the management plan	Name - Organisation
	<p>We support the use of removable structures on an ongoing basis. This facilitates modifications in the event of future growth, relocation in the event of future alterations within the park, or removal if needed. The use of shipping containers for equipment storage minimises our footprint within the park while maximising security. Absolutely happy to work with CCC to ensure any shipping containers will have the appropriate character and design for the surrounding reserve.</p>	<p>Player numbers are increasing locally and we are reaching the capacity of the two current courts. It's impossible to host international and the larger national events with just two courts. This is without any promotion of the sport to schools/School Sport Canterbury/ Primary School Sport Canterbury.</p> <p>With this being the only permanent venue for Canoe Polo in Christchurch and the best facility in the South Island, it is critical to future proof the venue for further development, including supporting facilities.</p> <p>Canoe Polo courts can be developed and maintained for a fraction of the cost of sports fields and can sustain much more intensive use.</p> <p>Consideration should also be given to the possibility of a camera tower (as some national/international events are being live-streamed) and access to power for scoreboards/lights etc.</p> <p>Additional reserve entrance 19,26 SUPPORT To provide easy access to the canoe polo area while still having most traffic not needing to drive into the canoe polo area. If pedestrian access is a priority, there should be thought of connecting it to the Christchurch public transport network.</p> <p>Sport facility Lake Tahi 24 CONDITIONAL SUPPORT We would like to minimise the distance between storage and the canoe polo area, given that a lot of the people carrying equipment will be children. There are also concerns regarding a shared facility with an increasing number of primary school children.</p> <p>Given security issues for stored equipment, we suggest the continued use of shipping containers, potentially with decoration/modification to make them more attractive.</p> <p>It would also be desirable to include changing facilities, the majority of school students travel to the lake in school uniform and presently take turns changing in the new toilet block, which is a slow process. This can be an issue on particularly cold/rainy days when children need to wait to get changed out of wet clothes after playing.</p>		
45472	See attachment		Yes	Lyndon Slater North Canterbury Fish and Game

## Roto Kohatu Reserve Draft Management Plan – June 2022

ID	We welcome your submission to the Roto Kohatu Reserve Draft Management Plan	We welcome your comments on the Roto Kohatu Reserve Draft Development Plan	Yes, I would like to speak to the Hearings Panel about my submission to the management plan	Name - Organisation
45350	I would like to build and operate an inflatable water park at Roto Kohatu reserve. Last year the Waimakariri council have approved a water park at Kaiapoi. This operation has been popular and I believe there is certainly room in Christchurch for a similar operation, closer to the central city. I have lived in Christchurch for 20 years and I have a strong business background, including owning the Silvermoon jewellery chain, Silverskies Ltd and several Pandora jewellery franchises.	My good friend and business colleague Peter Boyle, owns and operates Let's go Hydro, in Belfast (please visit this website to get an idea of what can be achieved), Northern Ireland. This operation is vast and includes outdoor cinemas, canoe water polo, accommodation, and a cafe. I would love to meet with CCC representatives and discuss, what facilities you would like to see at the site.	Yes	Simon Thwaites Silverskies Ltd
45438	Relocating the main entrance to number 15 would keep the canoe polo area less busy with through traffic and get the lake Rua swimmers to their location without going past the other sport lakes.  Having two more canoe polo courts would give the sport a higher standard for when larger tournaments are played.	Two more canoe polo courts.  Main entrance moved to number 15	No	fran johnson

## Roto Kohatu Reserve Draft Management Plan – June 2022

ID	We welcome your submission to the Roto Kohatu Reserve Draft Management Plan	We welcome your comments on the Roto Kohatu Reserve Draft Development Plan	Yes, I would like to speak to the Hearings Panel about my submission to the management plan	Name - Organisation
45433	<ul style="list-style-type: none"> <li>• Looks good!</li> <li>• I support to building of facilities to better support regular users e.g. dragon boating, canoe polo, etc.</li> <li>• I support the relocation of the main entrance to off Greywacke Rd/Outlook Place, and the closure of the existing “driveway” to motorised vehicles (will there be signage banning motorbikes?)</li> <li>• Under 2.4, policy 6, please ensure the signage on these shared paths is clear, and the paths are wide enough to enable cyclists to pass pedestrians (with dogs)</li> <li>• I support the biodiversity plan and hope to see greater respect from reserve users</li> <li>• Please provide bike stands for people who arrive by bicycle and wish to lock their bike while they swim/fish in Lake Rua or otherwise enjoy the reserve</li> <li>• Please consider whether a small pump track could be incorporated as an additional activity in the reserve</li> <li>• Please ensure there is good clear signage (or rock cairns perhaps, in the case of the landfill site) for those entering the reserve from Sawyers Arms Road and wanting to connect to the ōtukaikino track through to the groynes and beyond. Can the “driveway” around the NW edge be used by cyclists, or is this for jetboaters only?</li> <li>• An additional toilet at the Sawyers Arms Rd entrance would be helpful</li> <li>• I support the informal access “road” over the underpass being closed.</li> </ul>	<ul style="list-style-type: none"> <li>• I mostly agree with the priority of development. Here’s my high priority list: <ul style="list-style-type: none"> <li>o Reserve entrance and entrance gate</li> <li>o Wildlife development</li> <li>o Planting</li> <li>o Walking tracks</li> <li>o Swimming development and boat launch</li> <li>o Lizard habitat</li> </ul> </li> <li>• My medium priority list: <ul style="list-style-type: none"> <li>o Reserve furniture</li> <li>o Sport storage facility – Lake Rua</li> <li>o Sport facility – Lake Tahi</li> <li>o Canoe polo extension</li> <li>o Additional reserve entrance</li> <li>o Car parks and Storage facility – Lake Tahi</li> </ul> </li> <li>• My low priority list: <ul style="list-style-type: none"> <li>o Underpass and vehicle bay</li> <li>o Diving platform and/or Jetty or pontoon</li> <li>o Fishing</li> <li>o Recreation facility – radio control car track</li> </ul> </li> </ul> <p>Out of scope but please pass on to the appropriate people:</p> <ul style="list-style-type: none"> <li>• Please extend the shared path on Broughs Road down Sawyers Arms Road until it reaches the footpath outside #411 Sawyers Arms Rd to enable people to safely cycle or walk out to the reserve</li> </ul>	No	Fiona Bennetts

Roto Kohatu Reserve Draft Management Plan – June 2022

ID	We welcome your submission to the Roto Kohatu Reserve Draft Management Plan	We welcome your comments on the Roto Kohatu Reserve Draft Development Plan	Yes, I would like to speak to the Hearings Panel about my submission to the management plan	Name - Organisation
		<p>instead of feeling like they have to drive. Increasing access in this way also helps reduce carbon emissions from unnecessary vehicular traffic</p> <ul style="list-style-type: none"><li>• Please include a crossing from the shared path on Brouchs Road across to the reserve</li></ul>		

## Roto Kohatu Reserve Draft Management Plan – June 2022

ID	We welcome your submission to the Roto Kohatu Reserve Draft Management Plan	We welcome your comments on the Roto Kohatu Reserve Draft Development Plan	Yes, I would like to speak to the Hearings Panel about my submission to the management plan	Name - Organisation
45432		<p>I am a very regular user of the Reserve (at least 3 x weekly throughout the year) primarily as an area to exercise my dogs.</p> <p>I am supportive of the alternative main entrance as I have had ongoing concerns about the way some vehicle users have driven their vehicles on the gravel road (fast and without traction!) and the damage that continuously causes to the road. It is a very uncomfortable drive along the road at times.</p> <p>I am supportive of the improvements to the foreshore so swimmers can more easily enter the lake. A beach sounds amazing.</p> <p>I would hope that serviced rubbish bins will be an addition. The single skip on site at present appears not to be used by public accessing Lake Rua from the other side.</p> <p>I support diving platforms and pontoons to encourage specific areas for jumping and diving. Currently the northwest side of Lake Rua is used in a few places for ropes and jumping from trees the surrounding areas are often littered by rubbish and foliage is damaged.</p> <p>I hope that if any vendors are granted leases (ice cream, food, coffee carts etc), that they are required to use environmentally friendly packaging and are responsible for removal of any consequential litter.</p> <p>I understand that Dog bylaws prevent dogs from accessing the lakes it would be amazing if dogs were allowed to access the lake in off peak times (and away from habitat areas). I usually walk my dogs before 8am and am often one of only a handful of users at that time.</p>	No	Andrea Goodman

## Roto Kohatu Reserve Draft Management Plan – June 2022

ID	We welcome your submission to the Roto Kohatu Reserve Draft Management Plan	We welcome your comments on the Roto Kohatu Reserve Draft Development Plan	Yes, I would like to speak to the Hearings Panel about my submission to the management plan	Name - Organisation
45403	Thank you for the opportunity to provide comment on the reserve plan. I regularly walk there and along Otukaikino track. Accepting it's history I very much appreciate the naturalness of the area. With increasing urbanisation there is plenty of evidence supporting the positive mental health outcomes from connectivity with nature. To that end I strongly support the policies to keep built structures to a minimum. In fact I would perhaps go one step further and encourage the use of trees as against shade structures. I assume trees around Roto Rua are an option as I did note this was not possible on the capped landfill yet. Further to that any structures, even should a diving platform be constructed should be natural leave the concrete in the streets. At the moment the simple rope and ladder on the trees get lots of use and provides a great opportunity for risk taking. In a time when funding is always constrained I support money being spent on protecting biodiversity and ensuring water quality is maintained. The opportunity to swim in a natural fresh water environment is so rare in Canterbury now! So to reiterate. Please keep it very natural. Not full of built structures ( including rubbish bins) and not manicured. The community will get far more benefits from a natural environment.		No	Frances Sullivan
45381	We play canoe polo and would like more pitches. Also the access road needs to come from the other end please	Canoe polo is a great sport for young people as well as mature. It's a safe water sport, encourages water safety, teamwork, fun and exercise. The swimming areas are great too so diving platforms would be great	No	Catherine Ritchie

## Roto Kohatu Reserve Draft Management Plan – June 2022

ID	We welcome your submission to the Roto Kohatu Reserve Draft Management Plan	We welcome your comments on the Roto Kohatu Reserve Draft Development Plan	Yes, I would like to speak to the Hearings Panel about my submission to the management plan	Name - Organisation
45362	<p>There needs to be more parking/road design that allows for easy access to all during peak summer days. In particular around lake rua as often times you can drive in but find no park and then struggle to drive back out with the large amounts of incoming traffic. Designated and marked parking should be added. Perhaps a section of water (marked with bouys) that are easier swimming/shallower for children (have seen such designs at lake hood in ashburton)</p> <p>A nature scape playground</p> <p>A changing area (even just boards to move behind when needed rather than a lockable one)</p>		No	Ashleigh Durry
45361		Would be great to see bbqs available onsite, similar to those seen at other recreation sites in Chch.	No	Sharlene Teirney
45343	Would there be a dog fenced area?		No	Victoria Green
45328		<p>I enjoy the quiet walk around the reserve at times. And there are times when it would be nice to sit on a bench seat along the big lake where the jet skis are used.</p> <p>And if a new road access is made for the lake, I hope the present one stays too.</p> <p>Thank you for such a lovely natural setting.</p>	No	Diane Wilson
45315		You should make some new lakes in the red zone	No	Anna Thomson

## Roto Kohatu Reserve Draft Management Plan – June 2022

ID	We welcome your submission to the Roto Kohatu Reserve Draft Management Plan	We welcome your comments on the Roto Kohatu Reserve Draft Development Plan	Yes, I would like to speak to the Hearings Panel about my submission to the management plan	Name - Organisation
45278		<p>The road in needs to be sealed as too many potholes. Wider also so cars can ho both ways easily</p> <p>Permanent bbq's.</p> <p>Big floating playground for kids</p> <p>Council could arrange an icecream truck for hot days in summer</p> <p>More car parks</p> <p>More picnic tables</p> <p>Permanent shade eg build a few basic open bits of shelter</p>	No	Gareth Robb
45277	Management of the traffic flow in and out. Currently very congested and 1 way on the hill coming down to the lake. Definently a must to be managed. Potentially another entry and exit? Or 1 way in and another out? Health and safety of exit plans.	<p>To have easier access to the lake by having a more user friendly slant to the water. Currently the height from the grass area to the water is high and can be hard to get done the bank (especially elderly people or those with disabilities) . Have a little more area where young kids can move freely near the water edge. Picnic areas and shelters/huts like Spencer park. Kayak hire/water fun hire?</p> <p>Regular competitions such as a Manu annual event.</p>	No	Renee Davis

## Roto Kohatu Reserve Draft Management Plan – June 2022

ID	We welcome your submission to the Roto Kohatu Reserve Draft Management Plan	We welcome your comments on the Roto Kohatu Reserve Draft Development Plan	Yes, I would like to speak to the Hearings Panel about my submission to the management plan	Name - Organisation
45276	<p>Theses are artificial but highly important recreational amenities within easy access of many city people. Lake Rua offers safe swimming in water of good quality.</p> <p>I am disappointed that Lake Tahu has a long-term lease to the jet ski association, as I find this form of recreation noisy and intrusive, and incompatible with many other firms of aquatic recreation. However, jet skis do need somewhere they can go, and if access to the lake keeps them away from more ecologically sensitive areas like Brooklands Lagoon, Avon Estuary etc. then I guess it's the lesser of two evils. Given summertime pressure on Lake Rua, access to Lake Tahu would have been great also.</p> <p>Maintaining suitable water quality in both lakes is of great importance, especially given outbreaks of blue-green algae in nearby lakes of Styx Mill reserve. I recall the old Christchurch tip was in the vicinity of Roto Kahu reserve, but fortunately this should be "downstream" of water flow in the aquifer. The lakes have no surface flow, so increased flushing to dilute nutrients is not possible. Given the increased public use of the lakes over recent summers, and Canterbury's track record of high nitrate levels etc in groundwater, regular water quality monitoring is vital.</p> <p>Aside from the above comments about the virtual single-use commitment of Lake Tahu, I agree with CCC management proposals for the lakes. They would have some value as refugia for some native fish species (I note common bullies are abundant) but the presence of trout, tench and rudd would limit this option. People must be discouraged from feeding birds, especially blackbilled gulls which are becoming "pests" . Retention of small areas of important water fowl habitat is important, but , swans and geese should be discouraged as they foul the water and banks, and could interfere with airport activities.</p>		No	Don Jellyman
45275	Please leave it as is! Don't need anything else there!		No	Leanne Mora

## Roto Kohatu Reserve Draft Management Plan – June 2022

ID	We welcome your submission to the Roto Kohatu Reserve Draft Management Plan	We welcome your comments on the Roto Kohatu Reserve Draft Development Plan	Yes, I would like to speak to the Hearings Panel about my submission to the management plan	Name - Organisation
45274	<p>separate areas for kayaking and swimming. To many people mixing leads to injuries or potential injuries.</p> <p>LOTS of parking and monitored so people don't rip the no parking signs down and there are consequences for illegal parking.</p> <p>If the new entrance doesn't eventuate, the sharp did needs to be made one way or widened to allow for 2 vehicles.</p> <p>As this gets more popular, it needs to be monitored for bad behaviour, as some people are not able to self regulate and it makes it far less enjoyable for others. The popularity has exploded and it seems it is being encouraged. This is fine if it is monitored and car parking provided. It may come like the Groyne that there needs to eventually be a booking system.</p> <p>Make the bird reserves pretty watertight in its inability for idiots to vandalise.</p> <p>The new entrance will make it a lot easier to get to the lake. It will also mean a lot less maintenance of the entry road, meaning less problems with access. Large fence though to keep vandals out.</p> <p>Lock the new gates so people can't vandalise the area after dark.</p>	<p>The sheer increase in popularity is creating its own problems antisocial behaviour and parking anywhere a car can be squeezed.</p>	No	Marg O'Connell
45273	<p>I would just like to see a nice road in and out and not a rutted potholed 4wd track and maybe access to all areas of the lakes. Maybe some picnic areas with some permanent shelter.</p>		No	R. Wells
45272	<p>Please keep the area to the right (Old rubbish site) for dogs, hopefully off lead.</p>	<p>Please make sure dogs are allowed on lead around the lakes.</p>	No	Kay Weeks
45271		<p>Is there going to be any development on sealing the whole road?</p>	Yes	Rebecca Marshall

Roto Kohatu Reserve Draft Management Plan – June 2022

ID	We welcome your submission to the Roto Kohatu Reserve Draft Management Plan	We welcome your comments on the Roto Kohatu Reserve Draft Development Plan	Yes, I would like to speak to the Hearings Panel about my submission to the management plan	Name - Organisation
45256	<p>Major Points for development plan</p> <ul style="list-style-type: none"><li>• 4 pitches</li></ul> <p>This is the only venue in Christchurch and the best venue in the region, with additional courts it will also be an important national and international venue. It's impossible to host international and the larger national events with just two courts.</p> <p>The growth of the sport is currently limited by the capacity of only two courts and participant numbers will grow with the venue</p> <p>There are no alternative venues in Christchurch, so it is critical to future proof the venue and supporting facilities for future development</p> <ul style="list-style-type: none"><li>• Shared sport and storage facility, closer to Canoe Polo area</li></ul> <p>With double the amount of courts, there will be more storage space needed, the current amount of storage is just enough</p> <p>A lot of the people requiring equipment will be children, so having the storage facility closer to the Canoe Polo area is ideal</p> <ul style="list-style-type: none"><li>• Moving the road/gates</li></ul> <p>Traffic currently presents a significant hazard on busy days. With the need to cross the road to access our storage facilities, removing the majority of traffic would make it much safer</p> <p>Major point for management plan</p> <p>Policy 2.4: 1+3</p> <p>No traffic past the Canoe Polo area will greatly enhance the safety of all players and spectators</p>	<p>General support</p>	No	Zane Shadbolt

## Roto Kohatu Reserve Draft Management Plan – June 2022

ID	We welcome your submission to the Roto Kohatu Reserve Draft Management Plan	We welcome your comments on the Roto Kohatu Reserve Draft Development Plan	Yes, I would like to speak to the Hearings Panel about my submission to the management plan	Name - Organisation
45223	<p>I applaud the Council for providing this wonderful reserve.</p> <p>At present the draft management plan allows dogs to be walked in the wider reserve but not to swim in either of the lakes. We have around 40,000 dogs in Christchurch and most are family pets.</p> <p>On a recent visit to the reserve I noticed several families/people with dogs and the dogs were swimming which does not comply with the current Dog Control Bylaw.</p> <p>I am sure compliance would improve if there was an area where dogs are permitted to swim at the lakes. Anyone taking a dog to the park as part of a family outing will let the dog swim, regardless of the rules, so why not provide an area to allow this. There are few clean freshwater areas for dog swimming in Christchurch the Groyne is nearby and is a fabulous spot. Surely this could be too?</p>		No	Kathryn McNeil
45201	<p>I support the proposed management plan. I also encourage much more regular maintenance of the road ways so that those who don't have access to/can't afford a 4wd vehicle can still access the facility (which is currently required to reach Lake Rua).</p>	<p>I fully support the proposed developments under the development plan. Greater Christchurch is desperately short of natural/nature-based accessible aquatic and fresh water sport and leisure space. Such spaces provide, not only for sports participants, but also enable cost accessible opportunities for lower socioeconomic groups. It would also be great to see partnership with ECAN to enable easier public transport access to the Reserve, so that it might be used by people from across the city without the current transport and access barriers.</p>	No	Jill Borland
45186	<p>We would love this to be developed further.</p> <p>This is the only place my partner can get into the water from a wheelchair as he cannot go to the beach in his wheelchair</p>		No	Michelle Malone

## Roto Kohatu Reserve Draft Management Plan – June 2022

ID	We welcome your submission to the Roto Kohatu Reserve Draft Management Plan	We welcome your comments on the Roto Kohatu Reserve Draft Development Plan	Yes, I would like to speak to the Hearings Panel about my submission to the management plan	Name - Organisation
45140		<p>I am in favour of the development plans. I regularly swim at lake Rua as part of my open-water swim training and have noticed the erosion of the bank, especially in the last year. Moving the entry off Sawyers Arms Road is well overdue. My main concerns with the development, which will presumably make the reserve even more popular would be:</p> <ol style="list-style-type: none"> <li>1. The anti-social behavoiur that is already present will get worse. It is not a family friendly place to go, after early afternoons during summer. There is drinking, drug taking, drug dealing, and other antisocial behavoiur. There are piles of litter (usually glass bottles) left each day.</li> <li>2. The number of off-leash dogs. I am regularly avoiding dog poo on the grass as i walk to the lake. There are always numerous dogs off-leash and running into the water. Lake Rua is classed as an "on-leash" area, but this is constantly ignored. I have also witnessed dogs attacking other dogs... maybe it will be a child attacked next due to irresponsible owners??</li> <li>3. Waka Ama or Dragon Boat racing put up wire across the lake when they are using it. The lake is still available for swimmers, but how is this safe??</li> </ol>	No	Hannah Drury

## Roto Kohatu Reserve Draft Management Plan – June 2022

ID	We welcome your submission to the Roto Kohatu Reserve Draft Management Plan	We welcome your comments on the Roto Kohatu Reserve Draft Development Plan	Yes, I would like to speak to the Hearings Panel about my submission to the management plan	Name - Organisation
45116	Hello we (as a family) would fully support any enhancements to this facility.	<p>My son is heavily involved in Canoe Polo and we currently spend Tuesday nights / Wednesday afternoons and Sunday afternoons on the canoe polo lakes either playing in competitions or training. The current courts are stretched (only having two) so on a Tuesday night we don't leave there till after 8pm more courts and facilities would allow for more games. More courts would also allow for warming up and further practice sessions for whole Teams (like school teams on a Wednesday).Being big users of the Canoe Polo area and would dearly love more courts and facilities (The toilets are awesome by the way!!!)</p> <p>In addition to this, on a beautiful weekend day it is heavily trafficked with little space for people to park and safely move around with their families. Plus the road in has become more and more treacherous with the gigantic pot holes and it does encourage "boy racers". This is extremely dangerous on the crowded weekends so a shorter (less desirable racing track ) would be ideal.</p>	No	Angela Coley
45115		<p>Yes! please change the main entrance, people are always hooning on that gravel road and its dangerous.</p> <p>I played canoepolo here for 15 years and its the best place in the country (wind dependent). I biked from the CBD to play and it was excellent to have boat storage. A power supply would be good for tournaments too, though i guess mainland canoe polo and burnside canoe polo clubs would know more about this.</p>	No	THOMAS BOLTON

## Roto Kohatu Reserve Draft Management Plan – June 2022

ID	We welcome your submission to the Roto Kohatu Reserve Draft Management Plan	We welcome your comments on the Roto Kohatu Reserve Draft Development Plan	Yes, I would like to speak to the Hearings Panel about my submission to the management plan	Name - Organisation
45070	<p>Current access to reserve has a narrow gateway. The access road is rutted and too narrow for cars to pass. Not helped by large boulders to reduce the road to a single lane. It needs to be sealed and widened especially as it is used by trailers and buses. It needs better access to swim area off a separate entrance off the flat with additional parking installed to prevent people from parking all over the place including in the no parking areas creating traffic jams. Visited on the 6 March and it was chaos. Most people had no where to park and just left. If it had better access off some of the surrounding streets then could spread the parking over a larger area. No point providing more facilities if it can not cope with current demand especially as growing population of users.</p>		No	Yvonne Osborne
45031	<p>Need control over the drinking that occurs at the reserve. An enforced no alcohol policy is needed.</p> <p>The reserve is very busy so more security is needed to ensure everyone feels safe going there.</p> <p>Need to ensure that there is safe access to the reserve. Vehicle and pedestrian access off Outlook Way is a good option but the main issue is with pedestrians and cyclists who have a dangerous route getting to the reserve. There needs to be an underpass or safer crossing points at Sawyers Arms Road roundabout. It's extremely dangerous for the numerous users accessing the reserve to cross here but it's the only option if not accessing the reserve via vehicle.</p>	<p>Extra bases to jump off needed or just make easier/safer access to the trees (ie put in climbing wrungs).</p> <p>Definitely need access off Outlook Way.</p> <p>Some changing sheds that are not in a toilet would be good.</p> <p>Safer access to the Reserve with a safer crossing point at Sawyers Arms Road for cyclist/pedestrians</p>	No	TRACY HICKLING

## Roto Kohatu Reserve Draft Management Plan – June 2022

ID	We welcome your submission to the Roto Kohatu Reserve Draft Management Plan	We welcome your comments on the Roto Kohatu Reserve Draft Development Plan	Yes, I would like to speak to the Hearings Panel about my submission to the management plan	Name - Organisation
44934	roads and access for disability	<p>would be really nice if council would sealed this road as it is very dangerous the current way it is with all potholes bumps even to rough for 4wd</p> <p>also would be nice if there was access to the west side of the lake to park vehicles at the lake edge for disability folk , even if it was allowed via key access only , being pay for key to get thru a gate for seasonal pass same as enviromental council access to waimak river</p>	No	dave morgan
44918	<p>More security presence, and/or formalisation of this facility is needed to deter anti-social groups and behaviour. I.e. lifeguards? More security?</p> <p>It would be great to allow food trucks/coffee carts to park up somewhere out of the way. This would help make things a bit more social and discourage anti-social behaviour.</p>	Please expand the current parking facilities, there is not enough parking available for peak times, and there is plenty of space to increase this.	No	Duncan Henderson
44912		Provide recycling bins simular to the ones in Selwyn.	No	Reuben Gent
44911	The new plan needs to include a dedicated carpark, shutting off vehicle access to the lakes perimeter. Currently there is significant vehicle congestion and the summer dust is horrendous from the gravel road. Many of the vehicles are just "cruisers" who don't even use the lakes facilities. The lake needs to be more family friendly. Dogs need to be under "effective" control.		No	John Collings
44893	Are there anyway to get more carparking? Or a in-out flow like the end of the carpark? Maybe just maybe a bbq area or a few because alot of us just take a bbq down with us.		No	Kylie McGregor

## Roto Kohatu Reserve Draft Management Plan – June 2022

ID	We welcome your submission to the Roto Kohatu Reserve Draft Management Plan	We welcome your comments on the Roto Kohatu Reserve Draft Development Plan	Yes, I would like to speak to the Hearings Panel about my submission to the management plan	Name - Organisation
44882	I would like some input into the park plan, but could not make 15/02 date. A no dog zone it definitely requires please. And if you put in a off lease or dog area it need poo bags and disposable can. Also, more than one covered picnic or seat area.		Yes	Lana Mcleod
44754	I like the ideas. It will be great to upgrade the roads to the lakes as they have big port holes at the moment		No	Wei Ping Chew
44752	Great idea supported.	Support this. That road surface in particular needs to be improved!	No	Lisa McGonigle
44749	Thanks for the chance to submit. Please consider cycles ways as it might be really nice to cycle to this area and spend time at the lakes. I know it is a fair distance from town, but it could be a really nice cycle ride to go out there for a day and take a picnic.		No	Alex van den Broek
44748	<p>We came across this gem of a place while shopping for landscaping products and have returned several times, also using the link track to the groins.</p> <p>We were surprised at the diversity of native water birds using Lake Tahi despite the intense human presence.</p> <p>Improving the facilities for users is a welcome development but our only wish would be to protect and enhance the Crested Grebe habitat while deterring non native water fowl such as Canada Geese</p>		No	Martin Wheldon

## Roto Kohatu Reserve Draft Management Plan – June 2022

ID	We welcome your submission to the Roto Kohatu Reserve Draft Management Plan	We welcome your comments on the Roto Kohatu Reserve Draft Development Plan	Yes, I would like to speak to the Hearings Panel about my submission to the management plan	Name - Organisation
44744	Entrance road and parking improvements	<p>We love enjoying the lake, but it feels like we have to go off-roaring to get there. There are no avoiding the many, deep potholes and bumps.</p> <p>Also, on a busy day, on you're in you're in! As people take it upon them to park alongside the entrance road, this makes it extremely difficult for anyone to enter or leave. Increased parking and more no parking signs added along the road would be amazing.</p>	No	Lana Doublet
44742		<p>I support the plan. The new vehicle entrance to the Lake Rua needs to be done as soon as possible. The entrance needs to be cycle friendly for cyclist, as Lake Rua is used for triathlons.</p>	No	Grant Jeffreys

## Roto Kohatu Reserve Draft Management Plan – June 2022

ID	We welcome your submission to the Roto Kohatu Reserve Draft Management Plan	We welcome your comments on the Roto Kohatu Reserve Draft Development Plan	Yes, I would like to speak to the Hearings Panel about my submission to the management plan	Name - Organisation
44718	<p>Please DO NOT cut down or remove the Willow trees!!</p> <p>The existing trees are what make the Lakes so beautiful and pleasing to the eye they are a playground not what I would call a 'Travis style' wetland or swamp.</p> <p>I therefore take issue with Clause 2.7 of the Draft Plan in particular Para 8.</p> <p>"Exotic trees outside of habitat areas will be evaluated and considered for removal".</p> <p>Why does the CCC have an issue with broadleaf trees such as Willows and Poplars they are beautiful produce autumn colours and make the vista at the lake beautiful.?</p> <p>Please DON'T remove the Willow Trees from the northern side of Lake Rua or you will in my opinion be stepping in not to improve a now popular and relaxing spot but engineering it into another Travis wetland which it is not.</p> <p>Clause 2.7 also refers to "wilding or less desirable species" who says they are less desirable?? Again if you are referring to the Willows I love them!</p> <p>The access road is atrocious one of the bumpiest 'roads' I've ever driven on. Even if it must remain a gravel Road at least make it a safe drive please.</p> <p>I like the other improvements you have made in the past 2-3 years .</p>	<p>I discovered these Lakes 5 years ago before the road was extended and have loved spending time there every summer since. I grew up in Burnside/Avonhead and always enjoyed the similar setting in the Groynes.</p> <p>I welcome some improvements including possibly extending to allow swimming on Lake Tahi.</p> <p>But I think the shoreline the trees and the little access points between the Lakes where people can fish or sit are perfect AS THEY ARE.</p> <p>There can be a temptation to OVERDEVELOP!!</p> <p>Please don't OVERDEVELOP it's the throwback to the 70's and 80's that people enjoy about the place</p>	No	Craig Buchan

## Roto Kohatu Reserve Draft Management Plan – June 2022

ID	We welcome your submission to the Roto Kohatu Reserve Draft Management Plan	We welcome your comments on the Roto Kohatu Reserve Draft Development Plan	Yes, I would like to speak to the Hearings Panel about my submission to the management plan	Name - Organisation
44694		<p>It will be good having a closer access for lake rua for the public as the current road can get very busy and require a lot of maintenance due to high traffic volumes in the summer months. I have seen cars in a physical traffic jam as the current road is not very wide so gets blocked very easily if lots of people are going to that lake.</p> <p>Helping develop the courts and lake access for canoe polo is great to encourage the sport in the community. It is limited in its hosting capacities for competitions due to only having two courts etc.</p>	No	Lydia Nuttall
44690		The access road is in appalling condition and urgently needs resurfacing, preferably sealed	No	Derrick Nelson
44685		A playground would be a great asset	No	Laura Bishop
44683		Definitely more parking by the swim spot, on hot days it's nearly impossible to get a car park!	No	Maddie Thoresen
44682		Hi i have visited Roto Kōhatu Reserve once on a very busy day and unfortunately we had to reverse the whole way out from Lake rua as people had park all along one side which stated no parking so maybe a bigger parking spot at the entrance so you have to walk in and no parking around the lake could be a good idea? And then closer to the lake have little areas for picnic spots, BBQ maybe so that larger families are able to have kids birthday out there.	No	Renee Riley
44680	What about the crested grebes that nest on this lake, a critically endangered bird, how are they going to be protected.	As above, do we really need more people causing havoc with their jet skis, upsetting the bird life. As it is dogs are meant to be on lead and no-one hardly ever has them on a lead. When I was there a couple of days ago a dog came charging at me and jumped up at me and nearly knocked me over.	No	Ann Coates

## Roto Kohatu Reserve Draft Management Plan – June 2022

ID	We welcome your submission to the Roto Kohatu Reserve Draft Management Plan	We welcome your comments on the Roto Kohatu Reserve Draft Development Plan	Yes, I would like to speak to the Hearings Panel about my submission to the management plan	Name - Organisation
44679	<p>Please keep it a place for kayaks, paddle boards and swimming rather than boats as changes the entire dynamic of the place.</p> <p>Please also change the entrance or at least turn it into an actual road.</p> <p>Built in BBQs and an open air shower</p>		No	Nathan Jones
44678		If possible can you please allow for bikers around the lakes. And someday link up with the Waimak tracks.	No	Paul McFadden
44677	Would like to hear that the items in the middle of the lake are removed. When my friend swam across she saw what looked like a piece of old building material/ reinforcing metal there and sticking straight up.		No	Becky Wilson
44676		The road in is disgraceful. It has to be sealed urgently!	No	Wayne Thomsen
44675	If you could make allowances for biking when doing the track. It would be nice to have shared walk/cycle or 2 separate tracks around the circumference of the whole reserve. It's a very popular cycle track from Clearwater to the Jet Ski. Thanks		No	Debbie McFadden
44674	By removing the under path you may block accesses to the Otukaikino walkway which link the lake with the Groynts		No	Raviv Carasuk
44673	More car parking is needed, particularly at Lake Rua	I'm sorry, I have absolutely no idea how to make a submission but from my own experience the car parking at Lake Rua needs to be expanded. Perhaps a reserved area for boat launching near the waters edge. It can be very hard work carrying a kayak to the water when parking spots are scarce.	No	Kelly Brass

## Roto Kohatu Reserve Draft Management Plan – June 2022

ID	We welcome your submission to the Roto Kohatu Reserve Draft Management Plan	We welcome your comments on the Roto Kohatu Reserve Draft Development Plan	Yes, I would like to speak to the Hearings Panel about my submission to the management plan	Name - Organisation
44672	I think the plan looks great, a fabulous idea. I know lots of people enjoy walking their dogs here which you have acknowledged, but it would be amazing if we were allowed to swim our dogs too. Lots of other people do currently, but I know technically it is not allowed (though in all my time there I've never seen any issues with other dogs in and around the water). Is there a specific side of the swimming lake that could be set up to be for families with dogs under effective control? We would love to be able to have a family picnic and swim without leaving our lovely spoodle stuck at home inside, and know I am not alone in this!	I think the plan looks great, a fabulous idea. I know lots of people enjoy walking their dogs here which you have acknowledged, but it would be amazing if we were allowed to swim our dogs too. Lots of other people do currently, but I know technically it is not allowed (though in all my time there I've never seen any issues with other dogs in and around the water). Is there a specific side of the swimming lake that could be set up to be for families with dogs under effective control? We would love to be able to have a family picnic and swim without leaving our lovely spoodle stuck at home inside, and know I am not alone in this!	No	Heather Bentall
44671		Defiantly need to improve the car park . There is never room to park and everyone parks everywhere even when it says no parking.	No	Mietta Mattox
44669	Our kids have enjoyed meeting their friends there on hot days to cool off. Would it be possible to get this put on a bus route?		No	Mali Cole

## Roto Kohatu Reserve Draft Management Plan – June 2022

ID	We welcome your submission to the Roto Kohatu Reserve Draft Management Plan	We welcome your comments on the Roto Kohatu Reserve Draft Development Plan	Yes, I would like to speak to the Hearings Panel about my submission to the management plan	Name - Organisation
44668	<p>Lake Rua is a great asset to Christchurch. I am a frequent user of the Lake, mainly for paddle boarding, but also family picnics etc.</p> <p>The only addition I would like to see commentary on is on Alcohol use. I have often seen people get a bit rowdy and confrontational when at the Lake. The priority should be that this is a family safe area, not an area for drunken hooligans. Perhaps the Reserve can be designated an Alcohol free area. I know that is hard to police, but the reserve should be accessible to every one, and shouldn't be tainted by the actions of a drunken few. Perhaps some security cameras to deter the trouble makers?</p> <p>I've also noticed degradation at the lake edge in several areas. I would like to see more detail on where this shore remediation is planned to take place.</p>	<p>I approve of the improvements / changes to the access road, but this must be done with improvements to parking. Whilst the existing road has several no parking signs on the access way to Lake Rua, this is often ignored by idiots on very busy days, which turns the access road into a complicated and frustrating one way road. Might I request that the access road be designed so that cars can't pull over and clog up the access road (i.e. bollards / barrier in the middle of the road)</p> <p>Perhaps a special key / approval can be given to food vendors in the hotter months so they don't take up valuable parking spaces. I have observed the Mr Whippy vendor being abused for taking up two parking bays. He's just trying to make a dollar, but I can also see why people get frustrated, because at some times of the day, getting a car park is enormously challenging. If Mr Whippy could park in a designated area, this would help alleviate this frustration.</p> <p>With the proposed access change to Lake Rua being off of Outlook Place, will the businesses in the area be accommodating of overflow car parking on the street, or will they require parking limits to be applied?</p> <p>I think a larger floating pontoon / pier would be a great addition to the lake. The current pontoon is too small for the number of people at the lake on peak days. Perhaps 2-3 pontoons could be installed, and placed in the lake to promote use of the entire lake boundary.</p>	No	Barry Crates
44667		Need to make the road sealed and have it so you can drive around the lake with more parking areas right around if you have kids you have to carry all gear from car park and install speed limits to deter boy racers	No	Anouk Wanrooy
44666	More parking is definitely needed. Very very popular on hot weekend. The council has created a gem here. What about a similar venue in the eastern suburbs on some of the empty land.	Definitely go ahead with the plans. We love the lake	No	Kevin De Vos

## Roto Kohatu Reserve Draft Management Plan – June 2022

ID	We welcome your submission to the Roto Kohatu Reserve Draft Management Plan	We welcome your comments on the Roto Kohatu Reserve Draft Development Plan	Yes, I would like to speak to the Hearings Panel about my submission to the management plan	Name - Organisation
44665	<p>There needs to be cameras to detour the gang element that has taken up residence there. My 16 year old son was jumped and beaten up by a "family" gathering of mongrel mob and had his new motorcycle taken to with baseball bats, with multiple calls to police supporting the fact that it was an unprovoked attack. After the fact multiple people have come forward to say there has been many issues there recently. Cameras certainly might help keep it a family friendly area.</p> <p>Two families of witnesses said they wouldn't return because of it.</p>			Details provided but withheld by agreement
44664	<p>Yes definitely go ahead with plans. Pls consider more parking. We went 9th Jan and had to leave as no parking. Very hot day. We go there often in summer to swim, SUP. Because these lakes are so popular pls consider creating more man made lakes in Eastern suburbs.</p>	<p>Definitely more picnic areas, perhaps some more shady areas where we can sit. Pls continue to allow dogs attend with their owners. Pls consider adding a few change rooms near toilets.</p>	No	Kevin De vos
44663	<p>Improve the road in to the reserve so it is wide enough for it to be a two way road</p>		No	Sandy Chalmers
44662	<p>I would like to know you will consider the parking. We love this spot but parking can be ridiculous on a hot day.</p>		No	Fiona Sisson

## Roto Kohatu Reserve Draft Management Plan – June 2022

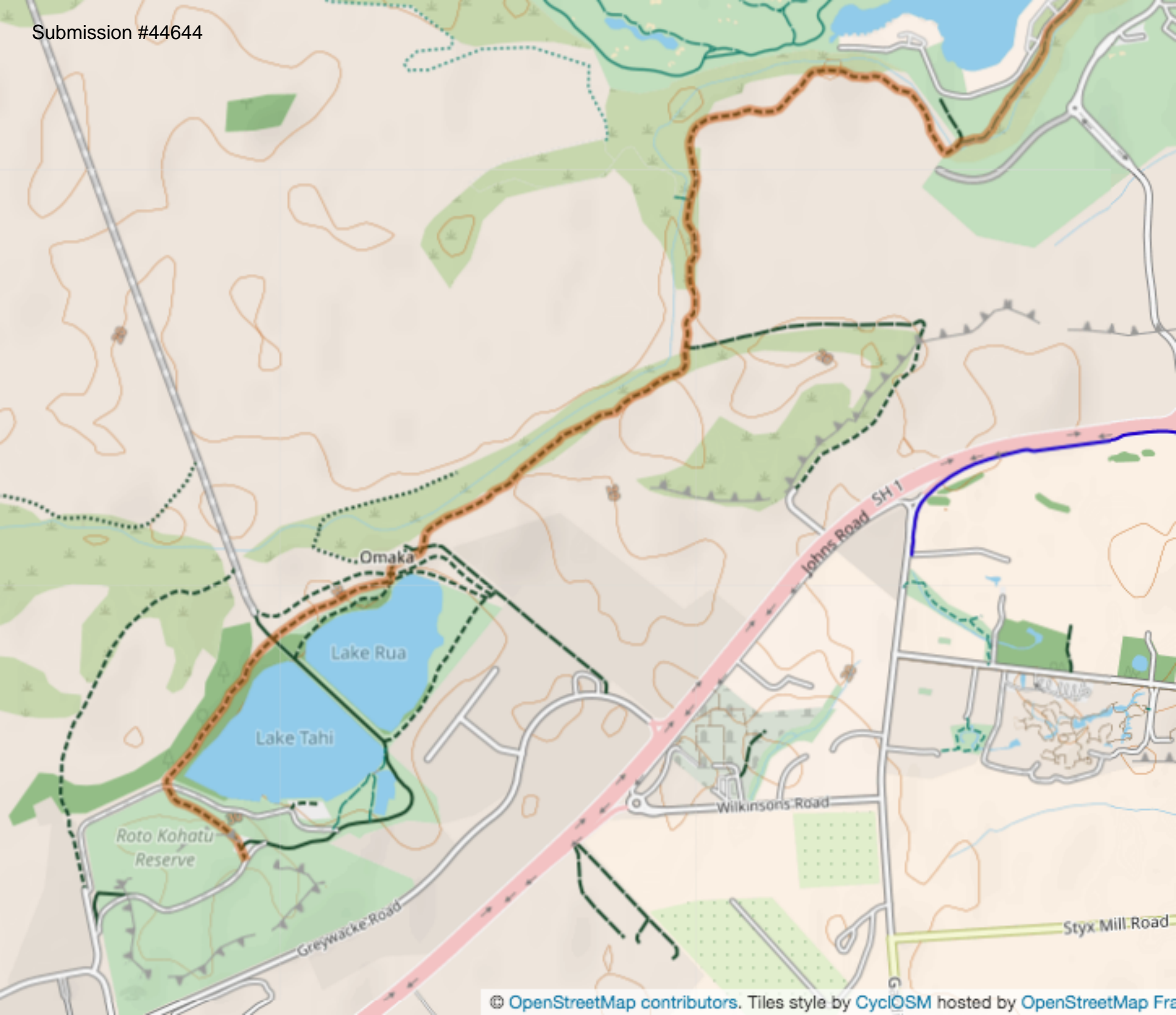
ID	We welcome your submission to the Roto Kohatu Reserve Draft Management Plan	We welcome your comments on the Roto Kohatu Reserve Draft Development Plan	Yes, I would like to speak to the Hearings Panel about my submission to the management plan	Name - Organisation
44661	<p>Please Please add more car parks . You are about 500 car parks short. I go to the Lake nearly every day in the summer with my family and the car parking, at the moment, is dangerous.</p> <p>The Lakes are wonderful in the winter, i walk my dog every day throughout the winter and i feel this could be another great place to encourage city people to get out and about with their dog when they find out just how beautiful the lakes are at our own back door.</p>	<p>I do worry that one day some young child could drown. I not sure how you can monitor the safety as i feel it's up to the parents but, as we know , children can drown very quickly and quietly.</p> <p>More BBQ settings especially for families that may not be able to afford BBQs of their own.</p> <p>I love seeing such a diversity of cultures at Roto and hopefully this can be encouraged ten fold.</p> <p>Back to nature activities would be wonderful.</p> <p>Maybe a pier that kids could fish from.</p>	Yes	Gloria Nathan
44660		<p>Need more parking and wider roads.</p> <p>We visited one weekend day and the place was overrun and gridlocked, absolutely awful.</p>	No	Vaughan Greenfield
44658	<p>Please upgrade the roads leading into the lake. We had a lovely family birthday party there in early January and the biggest obstacle for everyone was the roads.</p> <p>Is it possible to remove some of the hidden obstacles in the water? Its a bit scary seeing the signs near the swimming area and not knowing exactly what is under there. The kids don't see the warning signs once they are in the water either.</p>		No	Liz Sawers
44657	Where are the rubbish bins?	Where are the rubbish bins?	No	Jordan Belton
44656	Enhanced walking paths. The swimming part needs a better beach front. Possibly a deck that slopes into the water.shaded picnic areas.		No	Michael Arthur Robinson

## Roto Kohatu Reserve Draft Management Plan – June 2022

ID	We welcome your submission to the Roto Kohatu Reserve Draft Management Plan	We welcome your comments on the Roto Kohatu Reserve Draft Development Plan	Yes, I would like to speak to the Hearings Panel about my submission to the management plan	Name - Organisation
44655		Better access road and parking would help immensely. On busy days the cars line the road in and it is a nightmare because there is nowhere else to park. Double parking, parking on walkways....anything goes. The road is so rough, ok for us in a Ute but not for those in a normal car.	No	Rebecca Dew
44654	I wish to place a submission that the reserve development plan include upgrading and sealing of roadways both the entry and various roadways around the lakes.		No	John Noble
44653	Change or restrict the Jet Ski lake times to allow time slots for unpowered kayaks or SUP's etc	In lake Rua, get rid of all the trees that sit in or below the water as they are a hazard to swimmers and kayaks and SUP's etc. Also if you foster too much birdlife you will end up with geese or excess birds that will pollute the water making it un-swimmable (like the Avon where the water quality is unsafe due to excess birdlife polluting the waterways)	No	Brendon Ross
44652	<p>I would like to see the road into the lakes widened, with lots of kids running around it is dangerous having to back up to find a place wide enough for two cars to pass, especially around the middle of the day when morning swimmers are leaving and afternoon crowd are arriving.</p> <p>Also some changing rooms, at the moment people are using the toilets and making it harder for people waiting. Perhaps some of the posts and chain could be removed on really busy days by the ranger to let people park on grass out the back areas. This is a fabulous place, let's make it more user friendly</p>		No	Christine Atherton

## Roto Kohatu Reserve Draft Management Plan – June 2022

ID	We welcome your submission to the Roto Kohatu Reserve Draft Management Plan	We welcome your comments on the Roto Kohatu Reserve Draft Development Plan	Yes, I would like to speak to the Hearings Panel about my submission to the management plan	Name - Organisation
44650	More parking is desperately needed on a busy day its chaos right now with people parking all over and blocking the road down to one lane. Sealing the road would be a welcome improvement too.		No	Aaron Frew
44649	Hi. Could you please consider an area where dogs can swim? It's such a great area and certainly big enough to have one beach area where dogs are allowed.		No	Susan Tansey
44644	<p>Please maintain a clear marked/signposted cross-country cycleway to the north of the lakes that links on to the Otukaikino shared use trail through to the Waimakariri regional park (marked in brown on attached file). A formal sealed cycle link from Roto Kohatu to the Harewood Rd underpass would be a great asset and encourage the use of bike/scooter transport to the lakes. The best route might be along Brouchs Rd to the Macleans Island Rd cycleway (avoids heavy traffic on Sawyers Arms Rd). It would need to be a separated cycleway due to the large trucks etc using the area.</p> <p>I support everything else in the plan.</p>		No	Eric Ackroyd



**Christchurch International Airport Ltd**  
**Submission on**  
**Roto Kohatu Reserve Management Plan**  
**Prepared Draft Management Plan**

**TO:** Christchurch District Council (the Council)  
Via – online portal: <https://ccc.govt.nz/the-council/haveyoursay/show/450#startsubmission>

**SUBMITTER:** Christchurch International Airport Limited (CIAL)

**Contact:** Felicity Blackmore  
Environment and Planning Manager

[REDACTED]  
[REDACTED]

**ADDRESS FOR SERVICE:** As above.

## Introduction and Background

1. CIAL welcomes the opportunity to provide feedback on the Draft Roto Kahatu Reserve Management Plan (**the Draft Plan**).
2. CIAL wishes to acknowledge the endeavours by Christchurch City Council in undertaking a consultative exercise associated with the Draft Plan, and efforts by Council Staff to work with CIAL to date.

## The Draft Reserve Management Plan

3. CIAL recognises that the recreational reserve and waterbodies associated with Roto Kohatu (**the Reserve**) has been in place for some time. CIAL also commend the Christchurch City Council in seeking to formalise activities and management of the Reserve through the Management Plan (Draft November 2021).
4. CIAL acknowledges the undertakings within the Draft Reserve Management Plan to account for activities that may lead to an increased risk in birdstrike. CIAL seek amendments (as drafted below, or to achieve a similar outcome) to account for the following:
  - [A] CIAL would like an opportunity to review any landscape plans proposed at the Reserve. This would enable CIAL to review the plant species proposed to ensure all plants are appropriate and will not create any potential increased risk from birdstrike as provided for in the Draft Reserve Management Plan in Section 2.6, Objective 1 and Issue 4.4.
  - [B] CIAL would like to see the inclusion of wildlife-proof bins or Smart bins that have are closed when not in operation to prevent any birds, mammals or rodents obtaining access to the bins on site.
  - [C] Further to this, CIAL would like confirmation that regularly scheduled bin collections are planned for the Reserve. Additional bin collections may be required after high public traffic times, such as sporting events, community activities and extended holiday weekends, as there will likely be higher volumes of rubbish following these occasions.

## Relief Sought

5. CIAL **support, with minor amendments as identified** the following elements of the Draft Management Plan:
  - a. **Section 2.5, Policy 2** – so as to seek that the design and maintenance of litter bins and toilets are undertaken so as to avoid scavenging opportunities for bird species.

2. Facilities and services such as drinking fountains, cycle racks, track markers, seating, bridges, rubbish bins, signs (entry, interpretation, and wayfinding), and toilets may be provided, **and are maintained** to meet the needs of park visitors, facilitate use of the park, ~~and improve the visitor experience; and discourage scavenging opportunities for birds.~~

- b. **Section 2.6, Objective 1** – Which seeks to recognise bird strike risk to the Airport. CIAL seeks however, that given the catastrophic nature of Birdstrike risk, that this should be prioritised over habitat through the following amendment in **caps and underlined** ~~or struck out~~.

1. To protect vulnerable or uncommon birds on the park **only** where species, **and habitat** are compatible with airport activities.

- c. **Section 2.6, Policy 5** – Which identifies that signage will be established to advocate feeding of bird species associated with bird strike. However, for clarity this extended for all bird species, as scavenging birds are not so discernible, nor are the public able to discern which species carry higher risk of Birdstrike.

5. Advocacy measures including signage, interpretation and publicity may be used to improve people's understanding of birds on the site including the need to stay away from habitat areas and avoid feeding bird species. ~~associated with bird strike of airplanes.~~

- d. **Section 2.7, Policy 1** – The nature, extent and type of landscaping can have significant repercussions in terms of attracting bird species which are risk species in terms of bird strike. CIAL is able, through its extensive research and availability of experts to provide useful guidance on landscape plans to reduce risk.

1. Planting will be guided by a development plan to be prepared by the Council (**as consulted on with Christchurch International Airport Limited to reduce Birdstrike risk**).

- e. **Section 2.7, Policy 2** – The manner in which bank margins are designed and planted can have considerable implications in terms of discouraging flocking birds.

2. Specimen trees will be established and maintained outside of the landfill area to provide shade and shelter for visitors and discourage flocking birds, **as well as any landscape planting and design for the margins of Management Area A and Management Area B to be designed, planted and maintained to discourage flocking birds.**

- f. **Section 4.4, Bullet point 2** – The manner in which landscape, design and management to reduce increased birds strike risk should be explicit.

- The proximity of the park to Christchurch International Airport and associated risk of bird strike means that some birds should be discouraged from using the park **through design, landscaping and management.**

**Conclusion**

6. CIAL would welcome any opportunities to discuss the contents of this submission further with Council Officers or Councillors, including any Hearing on the matters raised.

**Signed** for and on behalf of Christchurch International Airport Limited



Felicity Blackmore

Environment and Planning Manager

Christchurch International Airport Ltd

PO Box 14001, Christchurch 8544, New Zealand

[Redacted]

[Redacted]

Submission  
Roto Kohatu Reserve  
Draft Management & Development Plan



25 March 2022

This submission is from the Cancer Society of New Zealand, Canterbury-West Coast Division Inc. Our mission is to reduce the incidence and impact of cancer for all New Zealanders. Skin cancer is our country's most common cancer, yet the vast majority of these skin cancers are preventable since they are caused by excessive exposure to ultraviolet radiation (UVR) from the sun. The Cancer Society is a leading advocate of evidence-based approaches to reduce exposure to UVR and therefore reduce skin cancer rates.

The Local Government Act highlights the need for a healthy and safe environment, so we were delighted to see that the provision of some shade has been factored into these development and management plans. Councils are in a unique position to ensure that sun protection options are provided in shared, outdoor public places, particularly with respect to shade at Council-owned or controlled facilities and community events.

However, we believe further actions could be taken to enhance and therefore better protect the health and safety of users of the reserve as outlined in this submission.

## Why is sun safety important for Roto Kahatu Reserve

New Zealanders love enjoying the outdoors, however, there is an invisible health and safety hazard which Council needs to factor into the development and management of these spaces:

protection from excessive exposure to ultraviolet radiation (UVR) from the sun.

There is a common misperception that sun safety is purely about individual behaviour change strategies. However this ignores the influence of broader socioeconomic, political and environmental factors that impact UVR exposure over an individuals' life-course. The Council has a responsibility to provide 'healthy built environments' ensuring public places provide sun protection options to the public, especially with respect to shade. A key advantage of changing our environments, rather than relying purely on an individual's actions is that everyone in the community can benefit equally – (i.e. it does not rely on people having sufficient finances to purchase sunscreen/sunhat for protection).

Local authority responsibility in creating healthy outdoor environments has been outlined as a key priority in reducing skin cancer rates in the 2022 Cancer Prevention Report by Te Aho o te Kahu – the Cancer Control Agency<sup>1</sup>.

A range of information for SunSmart Councils can be found at <https://www.sunsmart.org.nz/sunsmart-communities/sunsmart-councils/> and includes information on planning shade design, adopting policies and promotion of sun protection in your community.

<sup>1</sup> Te Aho o Te Kahu. 2022. *Pūrongo Ārai Mate Pukupuku, Cancer Prevention Report*. Wellington: Te Aho o Te Kahu, Cancer Control Agency. [Cancer Prevention Report \(windows.net\)](https://www.cancer.org.nz/cancer-prevention-report)

**Cancer Society of New Zealand Canterbury-West Coast Division Inc.**

PO Box 13450  
Christchurch 8141  
ph 03 379 5835

Charity Registration: CC10981



[cancernz.org.nz](https://cancernz.org.nz)



[contact@cancercwc.org.nz](mailto:contact@cancercwc.org.nz)

## Background evidence - why including sun safety is important

- Solar ultraviolet radiation (UVR) is the cause of 95% of all skin cancers<sup>1</sup>, making it highly preventable.
- New Zealand (and Australia) consistently have the highest skin cancer rates in the world. Each year over 2700 melanoma diagnosis are made<sup>2</sup> and 90,000 non-melanoma skin cancers are identified<sup>3</sup>.
- Costs associated with skin cancer are escalating. In the next 5 year the health system costs are expected to jump by 50%, from the current cost of just under \$200 million to \$300 million.<sup>4</sup>
- Skin cancer prevention is cost effective. For every \$1 spent on prevention there is a \$2-4 return.<sup>5</sup>
- In Christchurch, recorded UVR levels over the past 10 years shows that we have 125 days a year where UV is over 6<sup>6</sup>. [For a fair skinned person skin damage can occur after approximately 25 minutes outdoors at this UV strength, time for damage is even shorter at higher UVR levels. Christchurch's peak UVR recorded over the past 10 years was 13.7 ].
- Canterbury District Health Board has among the highest melanoma incidence rates in Aotearoa.<sup>7</sup>
- Quality shade, through both natural and built means, that is well-designed and positioned can reduce UVR exposure by up to 75%.<sup>8</sup> It can also enhance the amenity value for the community.
- Provision of shade is the most effective sun protection strategy (of the slip, slop, slap, wrap strategies).<sup>9</sup>
- Creating healthy outdoor environments is listed as a priority focus area in the 2022 Cancer Prevention Report.<sup>10</sup>
- In a 2013 survey in Aotearoa, more than 75 percent of respondents agreed that their Council should use money from rates to provide shade in public places.<sup>11</sup>
- Provision of shade varies throughout Councils in Aotearoa. Most playgrounds have no shade over play equipment, seats and tables, with playgrounds from more deprived areas significantly less likely to have at least one source of shade<sup>12</sup>. Refer to this submissions supporting documentation for a report specific to Christchurch City Council and a map that compares shade provided by Christchurch City Council to other Councils in the country.
- Proximity to water increases an individual's risk exposure to UVR and therefore skin/eye damage (as UVR also reflects from water and other reflective surfaces)<sup>13</sup>. Sunscreen can also easily wash off/be towel dried off and it can be impractical to wear sunhats depending on the water/leisure activity.

---

<sup>1</sup> International Agency for Research on Cancer. The Global Cancer Observatory; 2020. 'Melanoma and non-melanoma estimated number of new cases and deaths in 2020, worldwide, both sexes, all ages. France: IARC; 2020 [cited 2021 Sep 2]. Available from: [gco.iarc.fr/today/home](https://gco.iarc.fr/today/home)

<sup>2</sup> New Zealand Cancer Registry, Ministry of Health 2020

<sup>3</sup> Sneyd MJ, Gray A. Expected non-melanoma skin (keratinocytic) cancer incidence in New Zealand for 2018. In. Wellington: Health Promotion Agency. March 2018.

<sup>4</sup> Melanoma Summit Presentation by Associate Professor Louisa Gordon; 2022

<sup>5</sup> Gordon L, Shih S, Watts C, Goldsbury D, Green A, *Public Health Research & Practice*, The economics of skin cancer prevention with implications for Australia and New Zealand: where are we now? <https://doi.org/10.17061/phrp31502119>

<sup>6</sup> National Institute of Water and Atmospheric Research, NIWA UVI measurement data over 10 years

<sup>7</sup> Environmental Health Intelligence New Zealand, 2021, [https://www.ehinz.ac.nz/assets/Factsheets/Melanoma-cancer-registrations\\_released\\_Jul\\_2021.pdf](https://www.ehinz.ac.nz/assets/Factsheets/Melanoma-cancer-registrations_released_Jul_2021.pdf)

<sup>8</sup> Parsons PG, Neale R, Wolski P, Green A. The shady side of solar protection. *Med J Aust*. 1998;168(7):327–30. CrossRef | PubMed

<sup>9</sup> NZMJ 22 October 2021, Vol 134 No 1544, Prevention is better than a cure: we can do better in skin cancer control in New Zealand! Bronwen M McNoe

<sup>10</sup> Te Aho o Te Kahu. 2022. *Pūrongo Ārai Mate Pukupuku, Cancer Prevention Report*. Wellington: Te Aho o Te Kahu, Cancer Control Agency. [Cancer Prevention Report \(windows.net\)](#)

<sup>11</sup> Napier City Council. 2016. Shade Policy. Napier City Council. URL: <https://www.napier.govt.nz/assets/Document-Library/Policies/Shade-Policy.pdf>

<sup>12</sup> Gage R, Wilson N, Signal L, Thomson G. Shade in playgrounds: findings from a nationwide survey and implications for urban health policy. *Journal of Public Health* 27, 2019. [Shade in playgrounds: findings from a nationwide survey and implications for urban health policy | SpringerLink](#)

<sup>13</sup> IARC Monographs on the Evaluation of Carcinogenic Risks to Humans Volume 100D, Solar and Ultraviolet Radiation, [https://publications.iarc.fr/\\_publications/media/download/5241/91f6c0b6753e34e03b07f869e0bfa22e18e459a6.pdf](https://publications.iarc.fr/_publications/media/download/5241/91f6c0b6753e34e03b07f869e0bfa22e18e459a6.pdf)

## Recommendations on the Draft Management Plan

Steps Council can take to minimise the health and safety risk of UVR:

The Cancer Society was encouraged to see that sun safety through the provision of shade has been included in the management and development plan of Roto Kahuta Reserve. This would help ensure Council meets its health and safety obligations. However, there are other simple steps that could help ensure that the benefits of a shady environment can be maximised and encourage an expectation of being safe in the sun.

1. Re Management Areas (2.1 - Lake Rua)

We note policy 8 in the management plan (as below), however we would strongly encourage this to change to "will be constructed"

*"At the discretion of the Council a shade structure or structures may be constructed that could be associated with a future recreation facility in this area."*

2. Recreation and Sport (2.2)

- That sun safety be part of the check-list when considering applicants for events/bookings. For example this could include aspects like:
  - Is sun safety part of the applicant's health and safety plan?
  - Will there be sufficient shade available for event attendees? Or have organisers sourced additional portable shade gazebos? Are event organisers aware of the CCC/Cancer Society free shade and sunscreen booking system for community events?
  - Will the promotion of the event or communications during the event include sun safety reminders – especially around sunhats, sunscreen, sunglasses and cover up clothing?
  - Will sunscreen be available for members of public to use? Or will event attendees be encouraged prior to bring their own?
  - Has the event been scheduled outside of peak UVR times (if availability allows)?
- That all bookings and agreements are required to acknowledge that they are taking steps to ensure their activities are both SunSmart and Smokefree

3. Leases, licenses, and other tenure agreements (2.3)

- Commercial activities on the reserve should complement the enjoyment and experience of visitors, therefore they also need to be providing for the safety of customers in relation to sun safety. Any vendors supplying tables/areas where public can consume their products should be encouraged to place tables/seating in areas of available shade – or provide portable shade over these areas for their customers.
- Mention of CCC policy that stipulates the Reserve is both smokefree and vape-free should be included in all lease, license or agreements (if it is not already). Staff should be encouraged to politely remind the public of this smokefree status should the need arise.

4. Re Vegetation and planting (2.7)

We were encouraged to see mention of trees to provide shade for visitors. We endorse selection of specimen trees that are fast growing and will provide superior amounts of shade canopy. *Please refer to our suggestions on species under comments for draft development plan.*

5. Re Other Recommendations/Comments

- That placement of picnic areas be prioritised to spaces that have available shade already – or that built shade is provided over these spaces.
- Assess whether car park areas have visible smokefree signage that would encourage visitors to be smokefree and vape-free during their visit to the Reserve.

## Comments re Draft Development Plan

Our comments are primarily focused on the safety of the public in relation to exposure to ultraviolet radiation (UVR) from the sun. We note from the management plan that approximately two thirds of booked events are water-based – therefore increasing the level of risk from UVR. Therefore, it is important for Council to take steps to help mitigate these health and safety risks.

- Landscaping:

We fully endorse trees being planted around the edge of Lake Rua to provide shade. We encourage careful selection of appropriate species in relation to how much shade they can provide. Exotic species often have a wider shade canopy. Options for shade trees suited to South Island conditions can be found at <https://www.sunsmart.org.nz/assets/Be-SunSmart/Slip-into-shade/Shade-trees-for-schools-South-Island.pdf>

However, if indigenous species are preferred - then selection of varieties that either have a large canopy, or planting in clusters/groupings, can result in functional shade that the public can benefit from. Some arborist recommendations for potential shade selection include:

- Totara
  - Titoki
  - Pittosporum tenuifolium and Lemonwood.
  - NZ Beech. Red beech mostly but also black beech.
  - Ribbonwoods and lacebarks.
  - Manuka
  - Kanuka
  - Miro (slow growing)
  - Matai (slow growing)
  - Kowhai
- Reserve furniture.  
We would also strongly encourage the placement of the picnic tables not only in areas of key activities but to be placed under shaded spots when the sun is at the highest point in the sky (i.e. shaded between about 11am – 2pm, which is when UVR is typically at its strongest. We acknowledge that members of the public may prefer to actively seek out sunlight rather than shade – since our climate often means despite UVR levels being dangerous, the temperature can be cool. However, Council should be taking all practical measures to ensure facilities are placed in the safest spots.
- Prioritisation of health and safety:  
We note that implementation of the development plan is contingent on sufficient funds and

prioritisation. Health and safety measures to protect against UVR can easily be neglected, so we encourage Council to keep the planting of trees and placement of picnic tables at its current high priority (in both timeframe and priority grading in respects to other aspects of the plan).

- Maintaining a smokefree and vapefree environment:  
If smoking or vaping is observed within the reserve then additional smokefree signage (i.e. key entrances or carparks) should be considered, including no-smoking symbols screwed onto reserve furniture/picnic tables as a way to gently remind public of CCC's smokefree and vapefree policy.

Thank you for the opportunity to give feedback in regards to the Roto Kohatu plans. We would encourage you to refer to the information available on [www.sunsmart.org.nz](http://www.sunsmart.org.nz) as it does have a specific SunSmart Councils sections which may have useful information for you.

We would also like to highlight that we are also currently funding research . We will share these findings with the City Council when results are available.

In the meantime, the Cancer Society would be happy to work with Council to develop a Council wide sun protection policy that factors in the latest evidence and utilises the best practice examples both from within Aotearoa and Internationally. Please don't hesitate to contact us if this would be useful.

Kind regards



Cheryl Ford



Amanda Dodd



Please refer to attached supporting documentation:

1. Playground shade summary for Christchurch City Council
2. Council playground shade map
3. SunSmart Councils look after the well-being of our tamariki

# SunSmart Councils look after the well-being of our tamariki

New Zealanders need more shade in the places, they live, learn, work and play.

Skin cancer is the most common cancer in Aotearoa. Along with Australia, we have the highest melanoma rates in the world.



The cause of over 90% of skin cancers is over-exposure to ultraviolet radiation from the sun.

Shade is a practical, long lasting form of sun protection and creates comfortable, cool spaces. **We would like shade in our...**



Play areas



Recreation areas



Public pools

We believe all communities deserve shade at recreation areas and outdoor workplaces.

Find out more at [www.sunsmart.org.nz](http://www.sunsmart.org.nz)





## Playground shade summary for Christchurch City

In 2017, a nationwide survey was conducted of playground shade across the country using Google Earth and Google Street View images. The research aimed to identify the extent of playground shade in each territorial local authority (TLA) and examples of best practice. This report summarises the findings for this particular TLA, and how its playgrounds compare with other parts of New Zealand.

### **The importance of shade**

Skin cancer is the most common cancer in New Zealand, but is highly preventable. Up to 90% of melanoma and 95% of non-melanoma skin cancers are caused by excessive exposure to ultraviolet radiation (UVR). The provision of effective shade helps to reduce this harm. The planting of trees can also help to reduce climate change and prevent soil erosion. As trees grow, they absorb carbon dioxide and release oxygen into the atmosphere.

Shade is particularly important when designing and upgrading playgrounds. The Local Government Act 2002 highlights the need for a healthy and safe environments, both now and in the future. A 2013 survey found that 78% of NZ adults 'strongly agreed' or 'somewhat agreed' that their council should use money from rates to provide shade in public places.<sup>1</sup> Additionally, 65% said they would pay \$10 extra per annum to see more shade in public spaces, with 55% saying they would pay \$30 extra.

### **Sampling frame and method**

A sample of one playground per 10,000 population was selected from each TLA, with a minimum target sample of five playgrounds per TLA (where available). This resulted in a sample of 559 playgrounds nationwide, including 37 from Christchurch City.

For each playground, we estimated the amount of shade covering: main play structures (e.g. series of play equipment, stand-alone play equipment (e.g. swing sets) and sitting/eating areas.

We also identified the proportion of playgrounds that had shade within 10m of any playground equipment. Shade coverage estimates were made using Google Earth satellite and Street View images. To ensure consistency, estimates were made based on shadow patterns expected at solar noon on the summer solstice (approximately 1.30pm on the 22<sup>nd</sup> of December).

---

<sup>1</sup> Dallas, S. & Kruse, K. (2015). Public opinion on councils' role to provide shade in public places. [In Fact]. Wellington: Health Promotion Agency Research and Evaluation Unit.

## Key findings: Nationwide sample

### *New Zealand playgrounds have limited shade*

Of the 559 playgrounds sampled, only 44% had at least one source of shade covering playground activity areas (equipment, seats or tables). Only 14.1% of playground activity (449/ 2896) had at least some shade cover. This contrasts to 84% of activity areas in high-income Sydney playgrounds and 46% in low-income Sydney playgrounds. This is of particular concern as New Zealand and Australia have the highest rates of melanoma in the world. Australia's whole-of society approach to sun protection, including shade provision, is having a positive impact on their younger age group.

### *Playgrounds in low-income areas in New Zealand have less shade*

Playgrounds from more deprived neighbourhoods were 41% less likely to have at least one source of shade than the least deprived (wealthier) neighbourhoods

### *Most shade came from trees*

Trees accounted for 82.3% of playground shade. Purpose-built shade structures (e.g. shade sails) were rare, but more common in some TLA's such as Whangarei. Examples of good shading practices can be found on page 5.

### *Most playgrounds have shade nearby*

77% of playgrounds had at least one source of shade within 10m of play equipment. However, this shade offers no cover for users of playground equipment and rarely covered seats/tables or areas where people gather.

### *Few councils have sun protection policies*

Incorporating shade in long-term and district plans can help ensure that shade is considered and provided. Excluding regional councils, we were only able to identify five district councils that had sun protection policies (or equivalents) on their website (New Plymouth District Council, Napier City Council, Whangarei District Council, Palmerston North City Council and Horowhenua District Council).

## Key findings for this TLA

Out of the 66 TLA regions, this TLA was in the third quintile of playground shade (see full list on page 3).

Shade measure	New Zealand	This TLA
Playground activity areas with at least some shade cover*	16%	13%
Playgrounds with at least one source of shade within 10m of play equipment	77%	84%

\* Activity areas included main play structures, stand-alone play equipment areas, seats and tables

**Territorial local authorities ranked by shade in playgrounds\***

<b>Quintile</b>	<b>TLA region</b>	<b>Proportion of activity areas with at least some shade cover</b>	<b>Proportion of playgrounds with shade within 10m of play equipment</b>
Top (best shading)	Waikato District	47%	86%
	Tararua District	47%	75%
	Hurunui District	45%	100%
	Whangarei District	46%	63%
	South Wairarapa District	41%	100%
	Ōpōtiki District	38%	67%
	Kaipara District	32%	75%
	Nelson City	30%	100%
	Whakatāne District	30%	100%
	Central Hawke's Bay District	30%	75%
	Gisborne District	29%	100%
	Palmerston North City	26%	88%
	Hamilton City	25%	100%
Second	Gore District	24%	100%
	Mackenzie District	23%	100%
	Horowhenua District	22%	80%
	Marlborough District	19%	100%
	Central Otago District	17%	80%
	Upper Hutt City	17%	80%
	Buller District	19%	50%
	Queenstown-Lakes District	16%	100%
	Thames-Coromandel District	16%	80%
	South Taranaki District	16%	80%
	Matamata-Piako District	17%	40%
	Southland District	15%	86%
	Waitaki District	14%	83%
Third	Western Bay Of Plenty District	15%	60%
	Waitomo District	14%	100%
	Auckland City	14%	80%
	Napier City	15%	67%
	Tauranga City	13%	83%
	Taupō District	14%	60%
	Christchurch City	13%	84%
	Masterton District	13%	75%
	Kapiti Coast District	11%	100%
	Selwyn District	12%	60%
	Dunedin City	12%	67%
	Waipa District	12%	60%
	Ruapehu District	11%	80%

Fourth	Rotorua Lakes	13%	43%
	Kaikōura District	13%	33%
	New Plymouth District	10%	100%
	Hauraki District	11%	57%
	Wellington City	9%	84%
	Far North District	8%	83%
	Rangitikei District	8%	100%
	Whanganui District	9%	40%
	Lower Hutt City	9%	40%
	Ōtorohanga District	6%	100%
	Timaru District	7%	60%
	Kawerau District	6%	80%
	Manawatu District	7%	40%
Bottom (worst shading)	South Waikato District	5%	80%
	Invercargill City	4%	80%
	Stratford District	4%	80%
	Waimakariri District	6%	40%
	Westland District	4%	60%
	Hastings District	3%	80%
	Porirua City	4%	40%
	Tasman District	3%	60%
	Carterton District	0%	100%
	Waimate District	0%	100%
	Grey District	3%	20%
	Wairoa District	0%	67%
	Ashburton District	0%	60%
	Clutha District	0%	60%

\*TLAs were ranked using scoring system corresponding to proportion of areas covered (1% = 1 point, for a maximum of 100 points) and the proportion of playgrounds with shade within 10m of play equipment (1 point for every 20% of playgrounds with shade, for a maximum of 5 points). For example, the top scoring TLA (Waikato) had a score of 52 (47 from having shade covering 47% of its activity areas, and 5 from having shade within 10m of play equipment in at least 80% of its playgrounds).

**Figure 1: Good examples of tree shade**



Top left: Bowen St, Woodville, Taranaki District (albeit a mix of children’s play equipment and adult exercise equipment); Top right: Kuratawhiti St, Greytown, South Wairarapa District Council; Bottom left: Salisbury Street, Auckland City. Bottom right: Mahe Rd, Te Kauwhata, Waikato District.

**Figure 2: Good examples of built shade**



Top left: Dent St, Whangarei District; Top right: Robert St, Whangarei District; Bottom left: Lyndhurst St, Westport, Buller District; Bottom right: Cork St, Martinborough, South Wairarapa District

### **More details**

This work was completed by a team of researchers at the Health Promotion and Policy Research Unit, University of Otago, Wellington. The project was funded by Cancer Society of New Zealand, Wellington Division.

The published research is available at: <https://link.springer.com/article/10.1007/s10389-018-0990-9>.

### **Contact details**

For more information about shade provision in your region, please contact your local Cancer Society health promoter:

Cheryl Ford,  
033795835,

[REDACTED] -

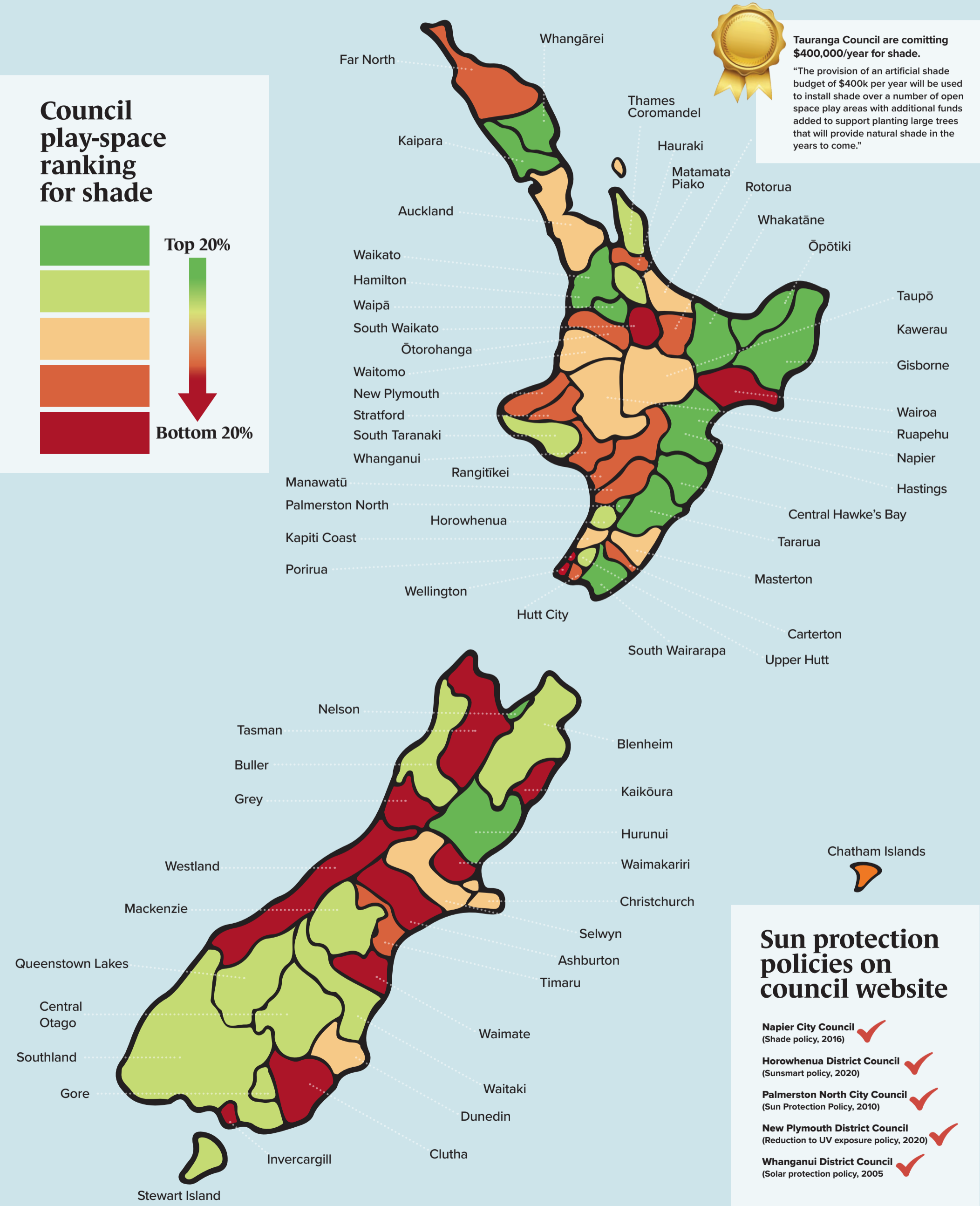
or Amanda Dodd

[REDACTED]

# How much shade does your Council provide at playgrounds?

(compared to other Councils)

Based on research by Gage et al NZMJ 2018 <https://doi.org/10.1007/s10389-018-0990-9>



**Disabled Persons Assembly NZ**



March 2022

To: Christchurch City Council on the Roto Kohatu Reserve Management  
Plan

**Disabled Persons Assembly NZ**

Contact:

**Chris Ford**  
**Regional Policy Advisor**

[REDACTED]

[REDACTED]

**Ingrid Robertson**  
**Kaituitui**

[REDACTED]

[REDACTED]

## Introducing Disabled Persons Assembly NZ

---

The Disabled Persons Assembly NZ (DPA) is a pan-disability disabled person's organisation that works to realise an equitable society, where all disabled people (of all impairment types and including women, Māori, Pasifika, young people) are able to direct their own lives. DPA works to improve social indicators for disabled people and for disabled people to be recognised as valued members of society. DPA and its members work with the wider disability community, other DPOs, government agencies, service providers, international disability organisations, and the public by:



telling our stories and identifying systemic barriers



developing and advocating for solutions



celebrating innovation and good practice

## The submission

---

DPA welcomes the opportunity to submit on the Roto Kohatu Reserve Management Plan. Outdoor recreation and sports bring communities closer together, enhancing the health and wellbeing of people and as stated this reserve is getting more popular with water sports, user groups and the public. That is why we would like to ensure that everyone can enjoy this reserve in an inclusive way.

### **The United Nations Convention on the Rights of Persons with Disabilities (UNCRPD)**

The UNCRPD Articles most relevant to our submission are:

- Article 4.3 Involving disabled people and our organisations in decisions that affect us
- Article 5: Equality and non-discrimination
- Article 7: Children with disabilities
- Article 9: Accessibility
- Article 19: Living independently and being included in the community
- Article 20: Personal mobility
- Article 30: Participation in cultural life, recreation, leisure, and sport

The New Zealand Government policies and strategies which are relevant to this submission are as follows:

New Zealand Disability Strategy 2016-2026:

- Outcome 5 - Accessibility

## DPA's recommendations

---

**Recommendation 1:** DPA recommends that the new entrance ways be accessible for all people and types of vehicles including mobility vans for wheelchair users, amongst others.

**Recommendation 2:** DPA recommends that both the pedestrian access and walking tracks on the lakes circuit walk provide for universal accessibility as this will enable wheelchair users and people who use mobility aids such as walking frames or crutches the ability to access both the reserve and walks. The pedestrian access and walking tracks should also incorporate tactile strips to ensure that blind and low vision people can successfully navigate around the walkway system

**Recommendation 3:** DPA recommends that seating be placed at strategic points along the walking tracks and by the lake of varying heights (either higher or lower) and should include armrests so that people with mobility impairments, children and older people can easily get in or out of the seats. This will enable parents/whanau to be included in their children's aquatic sports.

**Recommendation 4:** DPA recommends that picnic areas include wheelchair friendly picnic tables and other accessible outdoor furniture, such as barbeques, which will ensure that everyone is able to access these facilities.

**Recommendation 5:** DPA recommends mobility carparks are put in place across all the areas where car parks are proposed.

**Recommendation 6:** DPA recommends that accessible toilets with changing spaces and wet floor showers be made available so that disabled people can have access to them. These should be based in the shared sports facility and in strategic locations around the reserve.

**Recommendation 7:** DPA recommends that the shared use sports facility is accessible for all and is built according to universal design standards. This will ensure that everyone can be included in all activities which may be held in the sports facility, and this includes either as spectators or participants in sporting events, or other activities.

**Recommendation 8:** DPA recommends that if signage needs upgrading around the reserve that changes be made to ensure that the size of traditional signage be adjusted so that print, height and colour contrast are fully considered, especially for blind and low vision users. We would like to encourage the development of signage in accessible formats as well (i.e., in New Zealand Sign Language, Easy Read, Te Reo and ethnic languages) which can be done via the use of electronic apps where people can access this information via a QR code.

**Recommendation 9:** DPA recommends the placement of appropriate safety barriers on the jetty to reduce the risk of people accidentally falling into the water with appropriate safety signage also added.

**Recommendation 10:** DPA recommends that the use of e-scooters, bicycles, skateboards and roller skates be prohibited on the various pathways and around the park in order to prevent accidents from happening. If people need to come on their bicycles, e-scooters or other non-essential mobility devices, there should be suitable storage space provided either at or near the shared space facility.

**Recommendation 11:** DPA recommends that, in line with Article 4.3 of the UNCRRPD [see above], that the CCC involve disabled people and our organisations, which include DPA Christchurch, in a co-design process around the development of this site.

## Conclusion

---

DPA Christchurch would like to be involved in further discussions around the Roto Kohatu Reserve Management Plan. We believe that everything should be done to ensure accessibility for everyone, including the disabled communities of Ōtautahi and Aotearoa, who will visit and enjoy this reserve and sports facility. Both our Christchurch Kaititui and Regional Policy Advisor are available to be reached out to on this [please see front cover for their contact details].



## ***Roto Kohatu Management Plan and Development Plan***

A bit about KORE from our vision document.

Hutia te rito Hutia te rito o te harakeke Kei hea te kōmako e kō? Kī mai ki ahau He aha te mea nui? He aha te mea nui o te ao? Māku e kī atu He tangata! He tangata! He tangata, hī!	Pull out the shoot, Pull out the shoot of the flax bush Where will the bellbird sing? Say to me What is the greatest thing? What is the greatest thing in this world? I will say The people! The people! The people
---	--

### **Who is KORE?**

KORE is a quality provider of outdoor and water based activities for schools, groups and the public.

### **KORE Values and Beliefs**

KORE values the *people* who bring groups, the *people* who participate in our activities and the *people* who deliver and manage our activities.

KORE values the stakeholders we interact with in the spaces we operate in.

### **What does KORE do?**

KORE provides opportunity by providing programmes that develop resilience and confidence through active learning and practice in our natural environment and activities that engender active wellbeing.

### **This submission is for KORE**

**Currently a limited Company, Owned by Simon and Alison Rutherford. We are however working on transitioning to a Trust.**

**We are providers of sailing activities to The Canterbury Community Sailing Trust.**

We appreciated our meeting in advance of this Management Plan process, but wish to further confirm our thoughts about how we believe the Roto Kohatu environment can be or needs to be improved.

It is very much appreciated that there has been early consultation for this management plan.

The recent construction of toilets and developed car parking has been a fantastic improvement for the reserve. Having plumbed in and connected toilets is a massive

improvement for the school groups that we have come to the reserve. Thank you to Robbie Hewson for seeing this through. Since his taking over the leadership role we have seen positive and rapid progress and a transition to a much more mature reserve. He has a fantastic team he is leading.

Up to this season we were getting close to 5,000 student participants for our activities at Roto Kohatu, The Groynes and at the Puharakekenui - Styx River. Post Covid we do expect to get back to that level of service.

The driveway from the swale and parking is a vast improvement, as is the pedestrian gate through to the swale and Outlook Place. We are encouraging buses to come to Outlook Place to drop off students coming to us. The bus companies and drivers tell us they appreciate not having to negotiate the reserve driveway.

Plans to close the road over the mound are very good as

- The main driveway is going to be an ongoing maintenance issue. We agree that an entrance into the reserve from Outlook Place is ideal and the driveway over the landfill could then be closed.
- It is going to be important that the access to the lake for vehicles with trailers is easy - we have a 8m long trailer that we need to bring into the lake area several times during the season (Terms 4 and 1). The Dragon Boat groups have a longer one. Access from Greywacke Rd will help with these trailer moves.
- The proposed removal of the fence from the car park past the container area and on to where the underpass will be provide the room for a proposed building.
- Gazebo structures. Two to five structures with roofs for shade and shelter, around the beach area at the north end of the lake but leaving a clear area for the sailing Dragon boat activity. Say five to ten metres from the beach areas
  - These facilities should be about 4-5 metres in diameter with open sides - suitable for wrapping with sides for changing rooms - for use by our school groups. Bench seats around the sides.
- School group beach and sailing areas.
  - To get started in sailing you first learn to get the boat moving and sail it straight. This is best done at right angles to the wind as it is easiest to get the boat going and safest for new sailors.
  - This means that we need a variety of "beach locations" and sailing areas to achieve that.
  - We therefore propose;
  - The North end of Lake Rua from about the post near the underpass to the "point" near the sign on the Eastern side of the lake be remade.
  - Our suggestion is an engineered beach sweeping between these two points, with excavation several metres into the lake and for at least 5 or 6 metres into the land area.
  - This will remove all the construction detritus and all vegetation.

- Replace all with an engineered pebble beach with a smooth gradient designed to eliminate erosion.

We suggest **low level** planting selected to discourage high flying birds. Anything over 2 to 3 metres high will create wind shadow that will impact on the sailing. The swamp cyprus were a complete failure in the intended effect and they have only grown since the earthquakes. Tussock and perhaps harakeke or similar height plantings at least 15 to 20 metres from the waters edge.

The area under the trees on the western side now has rough concrete exposed at the water's edge that may need dealing with soon. We would like 2 to 3 metres of clear ground around the trees that remain here. The alder trees are very quick growing over the summer break now roots are established - they seem to have established since the earthquakes as well.

#### **Interaction with other users and water quality.**

Lake Rua in Roto Kohatu Reserve is the best venue for a school group introduction to sailing - probably anywhere in the world - the school day is in effect a physics, water safety and "how to learn" trip rather than a sport activity and the value is shown by the number of schools that come back with each cohort, year after year. KORE works with well over 100 schools over a ten year period, about 50 per "normal season, many of whom come every year or other year.

Our biggest issue is perhaps around demarcation between activities. We have worked hard to be a good stakeholder with Council, Rangers, other reserve user stakeholders and the public.

With the public finding Roto Kohatu there was a massive increase in people using Lake Rua. The public casual swimming and playing made us consider risk management processes and were led to decide to cease weekend and after school sessions for the summer period which has restricted our ability to run Learn To Sail courses at Rua, which is our preferred venue.

This is only really on hot days! We cannot of course plan for that.

For sailing we would like to suggest being able to put out demarcation lines of buoys to mark where we will be operating.

Habitat areas.

These are great. We saw a Crested Grebe in our area last week. We have been encouraging our coaches to avoid the SE corner already.

Proposed Building. This is fantastic.

We fully support this inclusion in the Development Plan and will actively support this project.

Trees and Shrubs.

There is a down wind effect from trees and shrubs (obstacles) for 10 to 15 times their height. A 7 metre tree at the northern lake edge affects sailing for a third of the lake. The current swamp cypress are doing this very well at the moment.

We ask for and encourage bird disrupting planting (grasses they do not like) close to the lake and graduated heights of bushes and trees as you get further from the lake edge.

This is only in the northeastern area of Management area A.

We fully support Endemic planting as a priority and indigenous planting. Particularly for grasses.

Thank you for this opportunity and I look forward to making a verbal submission in due course.

Simon Rutherford

[REDACTED]  
[REDACTED]



Canterbury Jets Sports Club would like to make the below submission predominantly in relation to the nesting Grebes around our leased facility at Lake Tahi.

As you are aware our club and it's 200 members have been custodians of Lake Tahi and co-existing with the wildlife for a long time as we have been using the lake now for 30 odd years and it was our club members that were tasked with the planting of the trees around the lake as part of our consent requirements, many of these original members are still part of the club.

CJSC committee have been informed that numbers of wildlife are growing, the birds are flourishing all while being born in an environment where the noise and skis going around the lake is part of their life and they effectively know nothing else. This is a constant talking point with club members how impressive the Grebes especially are. Also to note the park rangers have commented to us that they have sat and watched Jet skis racing and birds diving, also mentioning how amazing it was that the birds appear totally unaffected or injured.

We have always respected that they are part of our environment and the membership is made up mostly of respectable family community members who all appreciate the wonderful facility we have use of including the wildlife around it.

We often comment on the fact that the Grebes never appear stressed whatsoever by the skis and they merrily spend most of the time paddling around the middle of the lake ignoring the motorised activity around them, they regularly swim into the middle of the lake when the skis circulate and seem to play only in the race course that the skis are going around rather than move out of the way or hide and thus would only do this if they enjoy our existing environment. They are incredibly agile and if a ski maneuverers near them they quickly dive under and pop up often 20 plus meters away sometimes 20 seconds later and carry on nonchalantly unaffected, this behaviour will go on all day. They are obviously superb underwater swimmers. If a demonstration of this behaviour is required our CJSC members are happy to demonstrate to all associated parties.

In all this time we haven't had word of a Grebe being stuck or injured.

Our club members don't walk the lake edge on foot where the birds nest as we have no need to and in fact the only people who do are members of the public often walking their dogs which may be the biggest risk to the Grebes nesting areas.

## Submission #45496

We note the proposed plan to put barriers down the south and western sides of the lake to protect nesting areas.

This will cause some very significant issues to our users of the lake.

The lake is already only just large enough for us to manage a safe facility. Modern jet skis are large fast craft and the sport can be dangerous if not managed properly and professionally. We have a course set out of buoys which must be followed to ensure the safest possible use of the facility. On the western side we have two corresponding courses which split the skis up for both recreational and racing use. Due to the width east to west and the position of the Island there are no other alternatives for the course. The barriers being put forward on that south western side and the subsequent narrowing of the course will seriously compromise the safety of the facility as skis will be far too close together on the two courses and increase the chances of a serious accident significantly. It in fact will pretty much make the lake impossible for us to use practically of safely.

The only area that such barriers could be used without major affect is the south edge where they could come out maybe 10 meters or so. We do seriously question the need for them however as it is very obvious that the Grebes are both nesting and co-existing with us happily currently and spend most of their time in the middle of the lake anyway.

If this facility becomes unsafe and unfit for purpose and if Jet skiers start using it less there will be two main issues. Firstly there is a great chance that club members will start going back out to the likes of Brooklands and Sumner lagoons also Lyttleton where the environmental and public impact would be far greater than any very minor risk to the Grebes and other wild life. Secondly our safety training programs and PWC education with our club members will no longer be possible. This is the exact reason the City Council and the club negotiated the use of the facility nearly 30 years ago when there were major issues with Jet skiers in these other areas.

We are very happy to continue to work with any party to ensure that our happy association with the Grebes can continue. The CJSC would like to keep the status quo of the current regulations and restrictions, based on our knowledge and interaction with the wild life over the past 30 years and its success.

Thanks in advance for evaluating this submission and please contact us if you have questions or points of interest that need more explanation.

Kind Regards

Executive Committee

Canterbury Jet Sports Club



24 March 2022

North Canterbury Fish and Game Council

P.O Box 50

Woodend, 7641

[northcanterbury@fishandgame.org.nz](mailto:northcanterbury@fishandgame.org.nz)

### **Submission on Roto Kohatu Draft Management Plan**

This feedback is provided on behalf of the North Canterbury Fish and Game Council (Fish and Game). For additional information please contact Lyndon Slater using the details below:

#### **Submitter details:**

Contact person: Lyndon Slater

Email: [lslater@fishandgame.org.nz](mailto:lslater@fishandgame.org.nz)

Office Phone: 03 366 9191

Postal Address: P.O Box 50, Woodend, 7641

#### *General*

- [1] Fish and Game is the statutory manager of sports fish and game bird resources within North Canterbury. It holds functions and responsibilities set out in the Conservation Act (1987). Part of the organisation's function is to represent the interests and aspirations of anglers and hunters in the statutory planning process and to advocate the interests of the Council, including its interests in habitats. This submission is provided in accordance with this function.
- [2] As required by the Conservation Act (1987), Fish and Game has prepared a sports Fish and Game Bird Management Plan for North Canterbury (SFGMP), which has guided the development of this submission. This document describes the sports fish and game bird resources in the region and outlines issues, objectives and policies for management over the period. The document may be useful for decision maker to have regard to when considering this application.
- [3] Fish and Game submits in respect to sections 2.1 (Recreational) and 2.6 (Biodiversity & Ecology) of the Draft Management Plan, and requests consideration for the following:

### *Recreational*

- [4] In regard to section 2.1.1 Policy 10, as Fish and Game are the statutory manager of sports fish, any consultations being made regarding fishing or fishing structures within Roto Kohatu therefore must be made directly to Fish and Game. Fish and Game will then consult with the relevant fishing clubs and interested parties.
- [5] Fish and Game considers that the removal of too many fishing structures may reduce the opportunities for many members of the public who otherwise find access to fishing areas difficult.
- Current fishing structures provide one of a few areas near the city where disabled anglers have access to fishing, and removal of further structures will only reduce their opportunities.
  - Lifestyle changes and urbanisation mean that fewer children are being exposed to recreational angling opportunities. Children and beginners need active assistance to become involved, as without it their fishing excursions are less likely to be successful. Local fishing resources such as Roto Kohatu are crucial in helping to develop fishing skills.
  - The North Canterbury region records high levels of angler effort, with North Canterbury region as a whole attracting 170,000+ angler days. The Waimakariri River, one of the most convenient fisheries to the city, attracts 50,000+ of these angler days over a season. The increased aging of this large North Canterbury fishing population may result in an increased demand in the future for convenient access to fishing spots including Roto Kohatu.
- [6] In regard to section 2.1.2 Policy 1, Fishing was not considered as an activity in Lake Tahi although there are fish present. With consideration to the main users of Lake Tahi, fishing needs to be recognised as a primary activity in this for this site.

### *Biodiversity and Ecology*

- [7] No mention is made to the value of the freshwater resource in the context of Biodiversity and Ecology, therefore Fish and Game requests the recognition of the freshwater ecosystem as a whole in this section. Roto Kohatu is an important resource and habitat for freshwater species which in turn contribute to the recreational and ecological value of the park.