

Appendix J - P As-Built Requirements for Parks

J01: Garden	4
J02 : Hedge	5
J03 : Natural Area	6
J04 : Turf.....	7
J05 : Tree.....	8
J06 : Stand of Trees	9
K01: Artwork	10
K02: Bin	11
K03: BBQ.....	12
K04: Bollard	13
K05: Clock	14
K06: Cycle Equipment.....	15
K07: Flagpole	16
K08: Fountain	17
K09: Gate.....	18
K10: Light.....	19
K11: Light pole.....	20
K12: Picnic Table	21
K13: Plaque	22
K14: Pool	23
K15: Seat	24
K16: Shower	25
K17: Sign	26

K18: Tree Cage	27
K19: Tree Grate.....	28
K20: Tree Planter	29
K21: Water Feature	30
K22: Weather Station	31
L01: Car Park	32
L02: Judder Bar	33
L03: Ramp	34
L04: Track.....	35
L05: Terraces	36
M01: Dog Exercise Area	37
M02 : Dog Exercise Equipment	38
M03 : Playground Surface	39
M04: Play Equipment	40
M05: Play Modular Unit.....	41
N01: Boardwalk	42
N02: Boat Ramp.....	43
N03: Bridge.....	44
N04: Cattle Stop	45
N05: Jetty.....	46
N06: Fence	47
N07: Retaining Wall	48
N08: Safety Barrier	49
N09: Shelter.....	50

N10: Stairs	51
N11: Stile	52
N12: Stockyard	53
N13: Viewing Platform	54
N14: Water Tower	55
N15: Water Trough	56
O01: Sports Area	57
O02: Sports Field	58
O03: Sports Equipment	59
P01: Parks Tank	60
P02: Parks Pump	61
P03: Irrigation System	62
P04: Parks Backflow Preventer	63
P05: Parks Cable	64
P06: Parks Electrical System	65

As-Built requirements (PRK)

J01: Garden

Name		Garden (Polygon)
Polygon Type		J01 "Polygon Asset Inputs"
CAT Column	SAG Description	Valid Values
A	Type of polygon feature	J01
B	Specific type of Garden - the category of plants grown within the plot (e.g. Annuals, Shrubs).	Select from pick list: domGardenType
C	Existing or New Asset	Select from pick list: domExistingOrNew
D	Differs from design (yes/no)	Select from pick list: domDiffersFromDesign
E	Unique identifier from drawing	data - text(30 Characters)
F	Polygon Vertex Easting coordinate	data - decimal number
G	Polygon Vertex Northing coordinate	data - decimal number
H	Order of vertex / point along polygon	data - number
I	Date of commission	data - date (dd/mm/yyyy)
J	Location certainty - accuracy of data	Select from pick list: domLocationCertainty
K	Name of main contractor who installed asset	data - text (30 Characters)
L	Date of 'survey-start'	data - date (dd/mm/yyyy)
M	Guideline revision used for survey	Select from pick list: domSurveyGuidelineID
N	Long Description - further details, If a vertical garden state whether ground rooted or container suspended.	data - text (70 Characters)
O	Artwork - has it an aspect of creative, aesthetic, or decorative beauty?	Select from pick list: domArtWork
P	File name of photo. Photo must be supplied.	data - text (30 Characters)
Q	Garden style - the category of the containment of the planting area (e.g. Bed, Floral Planter).	Select from pick list: domGardenStyle
R	Irrigation type - the method of application of water (e.g. Auto Drippers, Auto Popup Sprinklers).	Select from pick list: domGardenIrrigationType
S	Mulch type - the material applied to the soil surface, to suppress weed growth, retain moisture, provide nutrients, or prevent erosion (e.g. Bark Nuggets, Leaf Mould).	Select from pick list: domMulch
T	Surround Construction Material - the substance from which the edge of the planting area is built (e.g. Concrete, Wood).	Select from pick list: domSurroundConstructionMaterial
U	Rare Species (Yes/No)	Select from pick list: domRareSpecies
V	Donated - if donated, by whom (School, Society, etc.)	Select from pick list: domDonated
W	Botanical Collection - (Yes/No)	Select from pick list: domBotanicalCollection

Additional Information
 *All other columns must be left "blank" or hold the value "LEAVE BLANK" as default in CAT
 See Appendix C.1.2 for a CAT example. Col G: enter number of vertex along outline.

All corner points along outline to be surveyed.
 Create one CAT row per surveyed point.

An illustrative of garden (e.g. Grass, Annuals) plot of ground or other open space where flowers, shrubs, grasses, vegetables, fruits or herbs are cultivated.

Outline of Garden
 X Y



As-Built requirements (PRK)

Name	Hedge (Line)
Line Type	J02 "Line Asset Inputs"

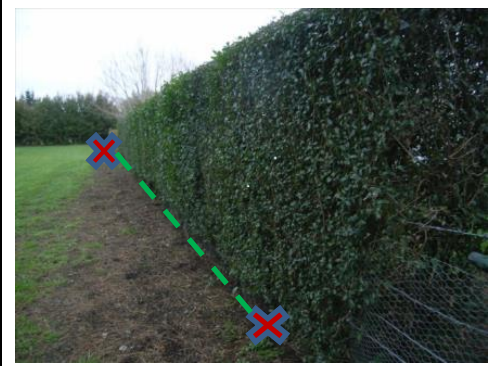


A row of bushes or small trees planted close together. Formally maintained, especially when used to delineate a boundary or create shelter.

J02 : Hedge

CAT Column	SAG Description	Valid Values
A	Type of Line feature	J02
B	LEAVE BLANK	
C	Existing or New Asset	Select from pick list: domExisitngOrNew
D	Differs from design (yes/no)	Select from pick list: domDiffersFromDesign
E	Unique identifier from drawing	data - text
F	Line Vertex Easting coordinate	data - decimal number
G	Line Vertex Northing coordinate	data - decimal number
H	Order of vertex / point along Line	data - number
I	Date of commission	data - date (dd/mm/yyyy)
J	Location certainty - accuracy of data	Select from pick list: domLocationCertainty
K	Name of main contractor who installed asset	data - text (30 Characters)
L	Date of 'survey-start'	data - date (dd/mm/yyyy)
M	Guideline revision used for survey	Select from pick list: domSurveyGuidelineID
N	Long Description - explanation, further details, or location within park	data - text (70 Characters)
O	Artwork - has it an aspect of creative, aesthetic, or decorative beauty?	Select from pick list: domArtWork
P	File name of photo. Photo must be supplied.	data - text (30 Characters)
Q	Specific use of Hedge - the purpose for which the asset is intended (e.g. Amenity, Mixed).	Select from pick list: domHedgeUse
R	Hedge Height in meters (m) - describe the vertical distance of the asset from the base to top with the values grouped into specific range classifications (e.g. < 1m, 1m - 2.5m, > 2.5m)	Select from pick list: domHedgeHeight
S	Hedge Width in meters (m) - the shortest dimension of the asset in the horizontal plane.	Data - decimal number (12 Chars, 2 Decimals)
T	Hedge Species - describe the official Botanical name by which the variety of plant(s) present in the natural area can be identified.	Select from pick list: domSpecies

Centre of structure
X Y



All edges, start/end points to be surveyed. Create one CAT row per surveyed point.

Additional Information

*All other columns must be left "blank" or hold the value "LEAVE BLANK" as default in CAT
See Appendix C.1.2 for a CAT example.
Col G: enter number of vertex along line

As-Built requirements (PRK)

Name	Natural Area (Polygon)
Polygon Type	J03 "Polygon asset Inputs"



Area (either naturally occurring or constructed) which is representative of what would naturally occur in this environment.

J03 : Natural Area

CAT Column	SAG Description	Valid Values
A	Type of polygon feature	J03
B	Type of Natural Area - Description of naturally occurring plants, grass, etc. (Exotic bush, Tussock, Native Vegetation, etc.)	Select from pick list: domNaturalAreaType
C	Existing or New Asset	Select from pick list: domExisitngOrNew
D	Differs from design (yes/no)	Select from pick list: domDiffersFromDesign
E	Unique identifier from drawing	data - text
F	Polygon Vertex Easting coordinate	data - decimal number
G	Polygon Vertex Northing coordinate	data - decimal number
H	Order of vertex / point along polygon	data - number
I	Date of commission	data - date (dd/mm/yyyy)
J	Location certainty - accuracy of data	Select from pick list: domLocationCertainty
K	Name of main contractor who installed asset	data - text (30 Characters)
L	Date of 'survey-start'	data - date (dd/mm/yyyy)
M	Guideline revision used for survey	Select from pick list: domSurveyGuidelineID
N	Long Description - explanation, further details, or location within park	data - text (70 Characters)
O	Artwork - has it an aspect of creative, aesthetic, or decorative beauty?	Select from pick list: domArtWork
P	File name of photo. Photo must be supplied.	data - text (30 Characters)
Q	Grazed - indicate if the area is grazed by livestock (Yes, No).	Select from pick list: domGrazed
R	Rare Species (Yes/No) Contains rare threatened or vulnerable species.	Select from pick list: domRareSpecies
S	Botanical Collection - (Yes/No)	Select from pick list: domBotanicalCollection

Outline of structure

X Y



Natural wetland area



Coastal natural area



Areas of native bush, dark green trees, scrub, gorse and grassland.

Additional Information

*All other columns must be left "blank" or hold the value "LEAVE BLANK" as default in CAT See Appendix C.1.2 for a CAT example. Col G: enter number of vertex along outline.

All corner points along outline to be surveyed.
Create one CAT row per surveyed point.

As-Built requirements (PRK)

Name	Turf (Polygon)
Polygon Type	J04 "Polygon Asset Input"

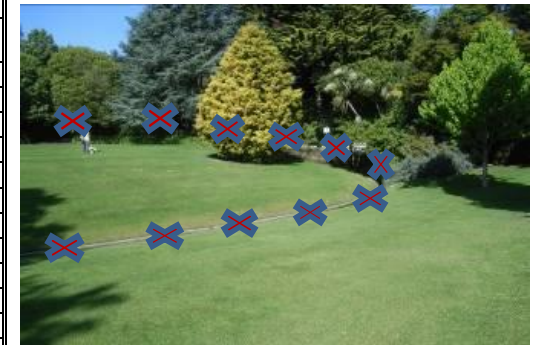


A surface layer of earth covered by a dense growth of grass. The earthen surface is held together by a matted layer of grass roots.

Outline of structure
X Y

J04 : Turf

CAT Column	SAG Description	Valid Values
A	Type of polygon feature	J04
B	Specific type of Turf - describe the function of the grassed area (e.g. Amenity, Sports).	Select from pick list: domTurfPurpose
C	Existing or New Asset	Select from pick list: domExistingOrNew
D	Differs from design (yes/no)	Select from pick list: domDiffersFromDesign
E	Unique identifier from drawing	data - text
F	Polygon Vertex Easting coordinate	data - decimal number
G	Polygon Vertex Northing coordinate	data - decimal number
H	Order of vertex / point along polygon	data - number
I	Date of commission	data - date (dd/mm/yyyy)
J	Location certainty - accuracy of data	Select from pick list: domLocationCertainty
K	Name of main contractor who installed asset	data - text (30 Characters)
L	Date of 'survey-start'	data - date (dd/mm/yyyy)
M	Guideline revision used for survey	Select from pick list: domSurveyGuidelineID
N	Long Description - explanation, further details, or location within park	data - text (70 Characters)
O	Artwork - has it an aspect of creative, aesthetic, or decorative beauty?	Select from pick list: domArtWork
P	File name of photo. Photo must be supplied.	data - text (30 Characters)
Q	Drainage - Type of drainage provision (field tile, gravel raft, nova flow)	Select from pick list: domDrainage
R	Mowing Height Standard - does this turf have a requirement to be within a certain height standard? i.e. for fire mitigation	Select from pick list: domMowingHeightStandard



Ornamental turf



Informal turf

Additional Information

*All other columns must be left "blank" or hold the value "LEAVE BLANK" as default in CAT
See Appendix C.1.2 for a CAT example. Col G: enter number of vertex along outline.

All corner points along outline to be surveyed.
Create one CAT row per surveyed point.

As-Built requirements (PRK)

Name		Tree (Point)	●
Point Type		J05 "Point Asset Inputs"	
CAT Column	SAG Description	Valid Values	
A	Type of Point feature	J05	
B	Specify Tree Species	Select from pick list: domTreeSpecies	
C	Existing or New Asset	Select from pick list: domExistingOrNew	
D	Differs from design (yes/no)	Select from pick list: domDiffersFromDesign	
E	Unique identifier from drawing	data - text	
F	Centre of structure in Easting coordinate	data - decimal number	
G	Centre of structure in Northing coordinate	data - decimal number	
H	LEAVE BLANK	LEAVE BLANK	
I	Date of commission	data - date (dd/mm/yyyy)	
J	Location certainty - accuracy of data	Select from pick list: domLocationCertainty	
K	Name of main contractor who installed asset	data - text (30 Characters)	
L	Date of 'survey-start'	data - date (dd/mm/yyyy)	
M	Guideline revision used for survey	Select from pick list: domSurveyGuidelineID	
N	Long Description - explanation, further details, or location within park	data - text (70 Characters)	
O	Artwork - has it an aspect of creative, aesthetic, or decorative beauty?	Select from pick list: domArtWork	
P	LEAVE BLANK	LEAVE BLANK	
Q	Is Rare?	Select from pick list: domIsRare	
R	Date Planted	data - date (dd/mm/yyyy)	
S	Observation Date - the date that tree attributes such as Tree Age Class and Diameter at Breast Height were assessed	data - date (dd/mm/yyyy)	
T	Tree Age Class Juvenile - recently planted/transplanted or establishing tree. Semi-Mature - established tree but one which has not reached its potential ultimate size. May be in either its juvenile or adult form. Mature - tree reaching its ultimate potential size, whose growth rate is slowing down, with limited potential for any significant increase in size. Over Mature - senescent tree, with a limited life expectancy.	Select from pick list: domTreeAgeClass	
U	Diameter At Breast Height measured in metres (m)	data - decimal number (12 Chars, 2 Decimals)	
V	Height measured in metres (m)	data - decimal number (12 Chars, 2 Decimals)	
W	Crown Spread measured in metres (m)	data - decimal number (12 Chars, 2 Decimals)	
Additional Information			
*All other columns must be left "blank" or hold the value "LEAVE BLANK" as default in CAT See Appendix C.1.2 for a CAT example.			

J05 : Tree

Describes a single woody plant with the potential to reach at least 6m in height.

**Centre of structure
X Y**



Quercus robur, common name English Oak, is not rare, or a hybrid.

As-Built requirements (PRK)

Name	Stand of Trees (Polygon)
Polygon Type	J06 "Polygon Asset Inputs"



J06 : Stand of Trees

CAT Column	SAG Description	Valid Values
A	Type of polygon feature	J06
B	Specific Type of Stand of Trees	Select from pick list: domTypeOfStandOfTrees
C	Existing or New Asset	Select from pick list: domExisitngOrNew
D	Differs from design (yes/no)	Select from pick list: domDiffersFromDesign
E	Unique identifier from drawing	data - text
F	Polygon Vertex Easting coordinate	data - decimal number
G	Polygon Vertex Northing coordinate	data - decimal number
H	Order of vertex / point along polygon	data - number
I	Date of commission	data - date (dd/mm/yyyy)
J	Location certainty - accuracy of data	Select from pick list: domLocationCertainty
K	Name of main contractor who installed asset	data - text (30 Characters)
L	Date of 'survey-start'	data - date (dd/mm/yyyy)
M	Guideline revision used for survey	Select from pick list: domSurveyGuidelineID
N	Long Description - explanation, further details, or location within park	data - text (70 Characters)
O	Artwork - has it an aspect of creative, aesthetic, or decorative beauty?	Select from pick list: domArtWork
P	File name of photo. Photo must be supplied.	data - text (30 Characters)
R	Tree Species - Specify Dominant Species in group	Select from pick list: domTreeSpecies

Additional Information

A Stand of Trees means a cluster, grove, or line of trees (including the root systems) that may be the same or variable species, either planted or naturally occurring that, are located in close geographic proximity to each other and meet at least one of the following criteria:

- canopies are touching; or
- canopies are overlapping; or
- there is the potential to form a closed canopy; or
- are environmentally dependent upon each other where the loss of one or more of the trees would have a detrimental effect on all or part of the remaining trees; or
- have an obvious level of visual connectivity through having a similar or complimentary sense of scale or form or age or colour or texture.

*All other columns must be left "blank" or hold the value "LEAVE BLANK" as default in CAT
See Appendix C.1.2 for a CAT example.

**Outline of structure
X Y**



A strand of trees is managed and maintained as a group of trees and recorded as a single asset. Condition assessment criteria and other data/information is assigned to the stand and not to each individual tree. A Stand of Trees may contain trees that, due to their stature, are managed as individual trees as per the definition of a "Tree". Stands of Trees provide a wide range of environmental, social and economic services to the community.

There are two types of Stand of Trees –

- Those in urban environments which are generally crown lifted for CPTED, can be seen and walked through, and will have various under surface management treatments (e.g. mown grass, mulch, planted garden)
- Those in rural areas (e.g. Banks Peninsula road sides) where both the tree and the under surface may or may not be actively managed.

As-Built requirements (PRK)

K01: Artwork

Name		Artwork (Point)	●
Point Type		K01 "Point Asset Inputs"	
CAT Column			
CAT Column	SAG Description	Valid Values	
A	Type of point feature	K01	
B	Specific type of Artwork	Select from pick list: domArtWorkCategory	
C	Existing or New Asset	Select from pick list: domExisitngOrNew	
D	Differs from design (yes/no)	Select from pick list: domDiffersFromDesign	
E	Unique identifier from drawing	data - text	
F	Centre of structure in Easting coordinate	data - decimal number	
G	Centre of structure in Northing coordinate	data - decimal number	
H	LEAVE BLANK		
I	Date of commission	data - date (dd/mm/yyyy)	
J	Location certainty - accuracy of data	Select from pick list: domLocationCertainty	
K	Name of main contractor whom installed asset	data - text (30 Characters)	
L	Date of 'survey-start'	data - date (dd/mm/yyyy)	
M	Guideline revision used for survey	Select from pick list: domSurveyGuidelineID	
N	Long Description - further details, artists name, and what it is	data - text (70 Characters)	
O	Artwork - has it an aspect of creative, aesthetic, or decorative beauty? Should always be set to YES for artwork.	Select from pick list: domArtWork	
P	File name of photo. Photo must be supplied.	data - text (30 Characters)	
Q	Construction Material - main substance the asset is made of	Select from pick list: domConstructionMaterial	
R	Surface Finish - outermost coating applied, aesthetic or protective	Select from pick list: domSurfaceFinish2	
S	Media Description - type of artistic representation	Select from pick list: domMediaDescription	
T	Date Created - date artist assigns to work, not installation date	data - date (dd/mm/yyyy)	
U	Marquette - scale model of this cultural item exists?	Select from pick list: domMarquet	
V	Acquisition Method - council funded, gifted or a mix?	Select from pick list: domAcquisitionMethod	
W	Length - longest horizontal dimension, measured in metres	data - decimal number (12 Chars, 2 Decimals)	
X	Height - vertical dimension between base and top of art in metres	data - decimal number (12 Chars, 2 Decimals)	
Y	Width - horizontal dimension between front and back of art in metres	data - decimal number (12 Chars, 2 Decimals)	
Z	Electrical component - is there an electrical component to this artwork?	Select from pick list: domElectricalComponent	
AA	Artwork Name - The name the artwork is know by	data - text (30 Characters)	
Additional Information			
*All other columns must be left "blank" or hold the value "LEAVE BLANK" as default in CAT See Appendix C.1.2 for a CAT example.			

An illustrative and decorative element of artistic production (e.g. Sculpture, Mural), the general purpose of which is aesthetic enhancement.

**Centre of structure
X Y**



As-Built requirements (PRK)

Name		Bin (Point)	●
Point Type		K02 "Point Asset Inputs"	
CAT Column	SAG Description	Valid Values	
A	Type of point feature	K02	
B	Specific type of Bin	Select from pick list: domBinType	
C	Existing or New Asset	Select from pick list: domExistingOrNew	
D	Differs from design (yes/no)	Select from pick list: domDiffersFromDesign	
E	Unique identifier from drawing	data - text	
F	Centre of structure in Easting coordinate	data - decimal number	
G	Centre of structure in Northing coordinate	data - decimal number	
H	LEAVE BLANK		
I	Date of commission	data - date (dd/mm/yyyy)	
J	Location certainty - accuracy of data	Select from pick list: domLocationCertainty	
K	Name of main contractor whom installed asset	data - text (30 Characters)	
L	Date of 'survey-start'	data - date (dd/mm/yyyy)	
M	Guideline revision used for survey	Select from pick list: domSurveyGuidelineID	
N	Long Description - explanation, further details, or location within park	data - text (70 Characters)	
O	Artwork - has it an aspect of creative, aesthetic, or decorative beauty?	Select from pick list: domArtWork	
P	File name of photo. Photo must be supplied.	data - text (30 Characters)	
Q	Construction Material - main substance the asset is made of	Select from pick list: domConstructionMaterial	
R	Surface Finish - outermost coating applied, aesthetic or protective	Select from pick list: domSurfaceFinish	
S	Style of Bin	Select from pick list: domBinStyle	
T	Bin Liner - Does this bin contain a second, removable solid bin?	Select from pick list: domLiner	
U	Bag Required - storage device to allow easy removal of refuse	Select from pick list: domBagRequired	
V	Lockable lid - Is the opening part of the bin lockable?	Select from pick list: domLockableLid	
W	Footpad - what is the foundation supporting the bin constructed of?	Select from pick list: domFootPad	

K02: Bin

Additional Information

*All other columns must be left "blank" or hold the value "LEAVE BLANK" as default in CAT
See Appendix C.1.2 for a CAT example.

A container where the public can dispose of waste or refuse.

Centre of structure
X Y



Wooden slatted litter bin with stained surface finish and concrete footpad. A closer look is needed to see if a liner or bag is present.



Dog style plastic canine waste bin. This bin has a bag and a concrete footpad.

As-Built requirements (PRK)

Name **BBQ (Point)** ●
 Point Type **K03 "Point Asset Inputs"**

K03: BBQ

CAT Column	SAG Description	Valid Values
A	Type of point feature	K03
B	LEAVE BLANK	
C	Existing or New Asset	Select from pick list: domExistingOrNew
D	Differs from design (yes/no)	Select from pick list: domDiffersFromDesign
E	Unique identifier from drawing	data - text
F	Centre of structure in Easting coordinate	data - decimal number
G	Centre of structure in Northing coordinate	data - decimal number
H	LEAVE BLANK	
I	Date of commission	data - date (dd/mm/yyyy)
J	Location certainty - accuracy of data	Select from pick list: domLocationCertainty
K	Name of main contractor whom installed asset	data - text (30 Characters)
L	Date of 'survey-start'	data - date (dd/mm/yyyy)
M	Guideline revision used for survey	Select from pick list: domSurveyGuidelineID
N	Long Description - explanation, further details, or location within park	data - text (70 Characters)
O	Artwork - has it an aspect of creative, aesthetic, or decorative beauty?	Select from pick list: domArtWork
P	File name of photo. Photo must be supplied.	data - text (30 Characters)
Q	Construction Material - main substance the asset is made of	Select from pick list: domConstructionMaterial
R	BBQ fuel type - Energy source used for cooking	Select from pick list: domBBQFuelType
S	Coin operated - Do coins need to be inserted to operate the BBQ?	Select from pick list: domCoinOperated
T	Donated - was this BBQ donated, if so by which group?	Select from pick list: domDonated
U	Shelter - Is there a form of protection built around or over BBQ?	Select from pick list: domShelter
V	Cooking Plates - How many cooking plates are there?	data - number (2 Characters)

Additional Information

*All other columns must be left "blank" or hold the value "LEAVE BLANK" as default in CAT
 See Appendix C.1.2 for a CAT example.

An apparatus for outdoor cooking using heat generated from electricity, gas or solid fuels.

**Centre of structure
X Y**



Open fire concrete BBQ in a shelter.



Steel construction gas BBQ. This BBQ is not in a shelter.

As-Built requirements (PRK)

K04: Bollard

Name		Bollard (Point)	●
Point Type		K04 "Point Asset Inputs"	
CAT Column			
SAG Description	Valid Values		
A	Type of point feature	K04	
B	LEAVE BLANK		
C	Existing or New Asset	Select from pick list: domExisitngOrNew	
D	Differs from design (yes/no)	Select from pick list: domDiffersFromDesign	
E	Unique identifier from drawing	data - text	
F	Centre of structure in Easting coordinate	data - decimal number	
G	Centre of structure in Northing coordinate	data - decimal number	
H	LEAVE BLANK		
I	Date of commission	data - date (dd/mm/yyyy)	
J	Location certainty - accuracy of data	Select from pick list: domLocationCertainty	
K	Name of main contractor whom installed asset	data - text (30 Characters)	
L	Date of 'survey-start'	data - date (dd/mm/yyyy)	
M	Guideline revision used for survey	Select from pick list: domSurveyGuidelineID	
N	Long Description - explanation, further details, or location within park	data - text (70 Characters)	
O	Artwork - has it an aspect of creative, aesthetic, or decorative beauty?	Select from pick list: domArtWork	
P	File name of photo. Photo must be supplied.	data - text (30 Characters)	
Q	Construction Material - main substance the asset is made of	Select from pick list: domConstructionMaterial	
R	Surface Finish - outermost coating applied, aesthetic or protective	Select from pick list: domSurfaceFinish	
S	Lockable - If removable can it be locked in place?	Select from pick list: domLockable	
T	Removable - Can the bollard be removed/retracted to allow access?	Select from pick list: domRemovable	
U	Height - vertical dimension between ground and top of bollard in metres	data - decimal number (12 Chars, 2 Decimals)	

Additional Information

*All other columns must be left "blank" or hold the value "LEAVE BLANK" as default in CAT
See Appendix C.1.2 for a CAT example.

A stand-alone structure to control or direct traffic.
Each bollard is to be captured as a separate asset.

Centre of structure
X Y





Steel removable and lockable bollard with a galvanised surface finish.



Rocks installed as bollards.

As-Built requirements (PRK)

K05: Clock	Name	Clock (Point)		<p>An instrument used to indicate, keep and co-ordinate time. In general a clock refers to any device for measuring and displaying the time.</p> <p style="text-align: center;">Centre of structure X Y</p>  <p>Only the hands and face are visible, the workings are installed in a bunker underneath the face.</p>		
	Point Type	K05 "Point Asset Inputs"				
	CAT Column				SAG Description	Valid Values
	A	Type of point feature			K05	
	B	LEAVE BLANK				
	C	Existing or New Asset			Select from pick list: domExisitngOrNew	
	D	Differs from design (yes/no)			Select from pick list: domDiffersFromDesign	
	E	Unique identifier from drawing			data - text	
	F	Centre of structure in Easting coordinate			data - decimal number	
	G	Centre of structure in Northing coordinate			data - decimal number	
H	LEAVE BLANK					
I	Date of commission	data - date (dd/mm/yyyy)				
J	Location certainty - accuracy of data	Select from pick list: domLocationCertainty				
K	Name of main contractor whom installed asset	data - text (30 Characters)				
L	Date of 'survey-start'	data - date (dd/mm/yyyy)				
M	Guideline revision used for survey	Select from pick list: domSurveyGuidelineID				
N	Long Description - explanation, further details, or location within park	data - text (70 Characters)				
O	Artwork - has it an aspect of creative, aesthetic, or decorative beauty?	Select from pick list: domArtWork				
P	File name of photo. Photo must be supplied.	data - text (30 Characters)				
Q	Construction Material - main substance the asset is made of	Select from pick list: domConstructionMaterial				
R	Operating Mechanism - where does the power to turn the clock hands come from?	Select from pick list: domOperatingMechanism				
S	Number of faces - the count of separate time displays controlled by the clock mechanism.	data - number (12 Characters)				
Additional Information						
*All other columns must be left "blank" or hold the value "LEAVE BLANK" as default in CAT See Appendix C.1.2 for a CAT example.						

As-Built requirements (PRK)

K06: Cycle Equipment

Name		Cycle Equipment (Point)	●
Point Type		K06 "Point Asset Inputs"	
CAT Column	SAG Description	Valid Values	
A	Type of point feature	K06	
B	Specific type of Cycle equipment	Select from pick list: domCycleEquipmentType	
C	Existing or New Asset	Select from pick list: domExisitngOrNew	
D	Differs from design (yes/no)	Select from pick list: domDiffersFromDesign	
E	Unique identifier from drawing	data - text	
F	Centre of structure in Easting coordinate	data - decimal number	
G	Centre of structure in Northing coordinate	data - decimal number	
H	LEAVE BLANK		
I	Date of commission	data - date (dd/mm/yyyy)	
J	Location certainty - accuracy of data	Select from pick list: domLocationCertainty	
K	Name of main contractor whom installed asset	data - text (30 Characters)	
L	Date of 'survey-start'	data - date (dd/mm/yyyy)	
M	Guideline revision used for survey	Select from pick list: domSurveyGuidelineID	
N	Long Description - explanation, further details, or location within park	data - text (70 Characters)	
O	Artwork - has it an aspect of creative, aesthetic, or decorative beauty?	Select from pick list: domArtWork	
P	File name of photo. Photo must be supplied.	data - text (30 Characters)	
Q	Construction Material - main substance the asset is made of	Select from pick list: domConstructionMaterial	
R	Surface Finish - outermost coating applied, aesthetic or protective	Select from pick list: domSurfaceFinish	
S	Number of Bikes - Count of bikes the stand is designed to support	data - number (12 Chars)	
Additional Information			
*All other columns must be left "blank" or hold the value "LEAVE BLANK" as default in CAT See Appendix C.1.2 for a CAT example.			

A structure designed to support bicycles when not in use, or prevent the use of bicycles in an area.

Centre of structure
X Y




Stainless steel hoop. A number of these can comprise one cycle stand. No surface finish.



Steel cycle stand. Galvanised surface finish.

As-Built requirements (PRK)

Name **Flagpole (Point)** 
Point Type **K07 "Point Asset Inputs"**

Vertical staff or pole on which a standard of flag, is or can be displayed.

Centre of structure
X Y

K07: Flagpole

CAT Column	SAG Description	Valid Values
A	Type of point feature	K07
B	LEAVE BLANK	
C	Existing or New Asset	Select from pick list: domExisitngOrNew
D	Differs from design (yes/no)	Select from pick list: domDiffersFromDesign
E	Unique identifier from drawing	data - text
F	Centre of structure in Easting coordinate	data - decimal number
G	Centre of structure in Northing coordinate	data - decimal number
H	LEAVE BLANK	
I	Date of commission	data - date (dd/mm/yyyy)
J	Location certainty - accuracy of data	Select from pick list: domLocationCertainty
K	Name of main contractor whom installed asset	data - text (30 Characters)
L	Date of 'survey-start'	data - date (dd/mm/yyyy)
M	Guideline revision used for survey	Select from pick list: domSurveyGuidelineID
N	Long Description - explanation, further details, or location within park	data - text (70 Characters)
O	Artwork - has it an aspect of creative, aesthetic, or decorative beauty?	Select from pick list: domArtWork
P	File name of photo. Photo must be supplied.	data - text (30 Characters)
Q	Construction Material - main substance the asset is made of	Select from pick list: domConstructionMaterial
R	Surface Finish - outermost coating applied, aesthetic or protective	Select from pick list: domSurfaceFinish
S	Flagpole Height in metres	data - decimal number (12 Chars, 2 Decimals)



Additional Information

*All other columns must be left "blank" or hold the value "LEAVE BLANK" as default in CAT
 See Appendix C.1.2 for a CAT example.

As-Built requirements (PRK)

K08: Fountain

Name		Fountain (Point)	●
Point Type		K08 "Point Asset Inputs"	
CAT Column	SAG Description	Valid Values	
A	Type of point feature	K08	
B	LEAVE BLANK		
C	Existing or New Asset	Select from pick list: domExisitngOrNew	
D	Differs from design (yes/no)	Select from pick list: domDiffersFromDesign	
E	Unique identifier from drawing	data - text	
F	Centre of structure in Easting coordinate	data - decimal number	
G	Centre of structure in Northing coordinate	data - decimal number	
H	LEAVE BLANK		
I	Date of commission	data - date (dd/mm/yyyy)	
J	Location certainty - accuracy of data	Select from pick list: domLocationCertainty	
K	Name of main contractor whom installed asset	data - text (30 Characters)	
L	Date of 'survey-start'	data - date (dd/mm/yyyy)	
M	Guideline revision used for survey	Select from pick list: domSurveyGuidelineID	
N	Long Description - explanation, further details, or location within park	data - text (70 Characters)	
O	Artwork - has it an aspect of creative, aesthetic, or decorative beauty?	Select from pick list: domArtWork	
P	File name of photo. Photo must be supplied.	data - text (30 Characters)	
Q	Construction Material - main substance the asset is made of	Select from pick list: domConstructionMaterial2	
R	Dog Bowl - Is a dog bowl included in the base of the fountain?	Select from pick list: domDogBowl	
S	Water Bottle Filler - whether it has a tap with enough space to allow people to replenish their own portable containers with water?	Select from pick list: domWaterBottleFiller	
Additional Information			
*All other columns must be left "blank" or hold the value "LEAVE BLANK" as default in CAT See Appendix C.1.2 for a CAT example.			

A device attached to the water supply in order to make potable water available for drinking

Centre of structure
X Y



Stainless steel drinking fountain. No dog bowl or water bottle filler.



Wooden drinking fountain with a dog bowl and water bottle filler.

As-Built requirements (PRK)

Name
Line Type

Gate (Line)

K09 "Line Asset Inputs "



A device permanently fitted into a gap in a barrier. Gates can be opened or closed to control access past the barrier.

X Y

K09: Gate

CAT Column	SAG Description	Valid Values
A	Type of line feature	K09
B	Specific type of Gate	Select from pick list: domGateType
C	Existing or New Asset	Select from pick list: domExisitngOrNew
D	Differs from design (yes/no)	Select from pick list: domDiffersFromDesign
E	Unique identifier from drawing	data - text
F	Line Vertex Easting coordinate	data - decimal number
G	Line Vertex Northing coordinate	data - decimal number
H	Order of vertex/point along line	data - number
I	Date of commission	data - date (dd/mm/yyyy)
J	Location certainty - accuracy of data	Select from pick list: domLocationCertainty
K	Name of main contractor whom installed asset	data - text (30 Characters)
L	Date of 'survey-start'	data - date (dd/mm/yyyy)
M	Guideline revision used for survey	Select from pick list: domSurveyGuidelineID
N	Long Description - explanation, further details, or location within park	data - text (70 Characters)
O	Artwork - has it an aspect of creative, aesthetic, or decorative beauty?	Select from pick list: domArtWork
P	File name of photo. Photo must be supplied.	data - text (30 Characters)
Q	Construction Material - main substance the asset is made of	Select from pick list: domConstructionMaterial
R	Surface Finish - outermost coating applied, aesthetic or protective	Select from pick list: domSurfaceFinish3
S	Gate Style- describe the design of the gate	Select from pick list: domGateStyle
T	Post Material - main substance the vertical supports keeping the gate in place are made of	Select from pick list: domPostMaterial
U	Height - between the ground and top of gate in metres	data - decimal number (12 Chars, 2 Decimals)
V	Ownership - who the gate belongs to	Select from pick list: domOwnership



Gate Type of pedestrian, gate style of picket.



Gate Type of vehicular, gate style of standard farm gate.

Additional Information

*All other columns must be left "blank" or hold the value "LEAVE BLANK" as default in CAT
See Appendix C.1.2 for a CAT example.
Col G: enter number of vertex along line

As-Built requirements (PRK)

K10: Light

Name		Light (Point)	●
Point Type		K10 "Point Asset Inputs"	
CAT Column	SAG Description	Valid Values	
A	Type of point feature	K10	
B	Specific type of light	Select from pick list: domLightType	
C	Existing or New Asset	Select from pick list: domExisitngOrNew	
D	Differs from design (yes/no)	Select from pick list: domDiffersFromDesign	
E	Unique identifier from drawing	data - text	
F	Centre of structure in Easting coordinate	data - decimal number	
G	Centre of structure in Northing coordinate	data - decimal number	
H	LEAVE BLANK		
I	Date of commission	data - date (dd/mm/yyyy)	
J	Location certainty - accuracy of data	Select from pick list: domLocationCertainty	
K	Name of main contractor whom installed asset	data - text (30 Characters)	
L	Date of 'survey-start'	data - date (dd/mm/yyyy)	
M	Guideline revision used for survey	Select from pick list: domSurveyGuidelineID	
N	Long Description - Where controlled from, and if LED strip lighting the length.	data - text (70 Characters)	
O	Artwork - has it an aspect of creative, aesthetic, or decorative beauty?	Select from pick list: domArtWork	
P	File name of photo. Photo must be supplied.	data - text (30 Characters)	
Q	Light Purpose	Select from pick list: domLightPurpose	
R	Power account number	data - text (30 Characters)	
S	Power Source	Select from pick list: domPowerSource	
Additional Information			
*All other columns must be left "blank" or hold the value "LEAVE BLANK" as default in CAT See Appendix C.1.2 for a CAT example.			

A device to provide illumination of an item or area.

Centre of structure
X Y



Inground spot light that illuminates a sign, therefore the light purpose is functional.



Generally lights on poles are floodlights with a functional purpose.

As-Built requirements (PRK)

Name **Light Pole (Point)** 
Point Type **K11 "Point Asset Inputs"**

A vertical structure constructed to elevate lights in order to facilitate the illumination of a larger area.

K11: Light pole

CAT Column	SAG Description	Valid Values
A	Type of point feature	K11
B	LEAVE BLANK	
C	Existing or New Asset	Select from pick list: domExisitngOrNew
D	Differs from design (yes/no)	Select from pick list: domDiffersFromDesign
E	Unique identifier from drawing	data - text
F	Centre of structure in Easting coordinate	data - decimal number
G	Centre of structure in Northing coordinate	data - decimal number
H	LEAVE BLANK	
I	Date of commission	data - date (dd/mm/yyyy)
J	Location certainty - accuracy of data	Select from pick list: domLocationCertainty
K	Name of main contractor whom installed asset	data - text (30 Characters)
L	Date of 'survey-start'	data - date (dd/mm/yyyy)
M	Guideline revision used for survey	Select from pick list: domSurveyGuidelineID
N	Long Description - explanation, further details, or location within park	data - text (70 Characters)
O	Artwork - has it an aspect of creative, aesthetic, or decorative beauty?	Select from pick list: domArtWork
P	File name of photo. Photo must be supplied.	data - text (30 Characters)
Q	Construction Material - main substance the asset is made of	Select from pick list: domConstructionMaterial
R	Surface Finish - outermost coating applied, aesthetic or protective	Select from pick list: domSurfaceFinish
S	Height in metres	data - decimal number (12 Chars, 2 Decimals)
T	Number of lights - How may lights are attached to the pole?	data - number (5 Chars)

Centre of structure
X Y



Additional Information

*All other columns must be left "blank" or hold the value "LEAVE BLANK" as default in CAT
 See Appendix C.1.2 for a CAT example.

As-Built requirements (PRK)

K12: Picnic Table

Name		Picnic Table (Point)	●
Point Type		K12 "Point Asset Inputs"	
<hr/>			
CAT Column	SAG Description	Valid Values	
A	Type of point feature	K12	
B	LEAVE BLANK		
C	Existing or New Asset	Select from pick list: domExisitngOrNew	
D	Differs from design (yes/no)	Select from pick list: domDiffersFromDesign	
E	Unique identifier from drawing	data - text	
F	Centre of structure in Easting coordinate	data - decimal number	
G	Centre of structure in Northing coordinate	data - decimal number	
H	LEAVE BLANK		
I	Date of commission	data - date (dd/mm/yyyy)	
J	Location certainty - accuracy of data	Select from pick list: domLocationCertainty	
K	Name of main contractor whom installed asset	data - text (30 Characters)	
L	Date of 'survey-start'	data - date (dd/mm/yyyy)	
M	Guideline revision used for survey	Select from pick list: domSurveyGuidelineID	
N	Long Description - explanation, further details, or location within park	data - text (70 Characters)	
O	Artwork - has it an aspect of creative, aesthetic, or decorative beauty?	Select from pick list: domArtWork	
P	File name of photo. Photo must be supplied.	data - text (30 Characters)	
Q	Table top construction material	Select from pick list: domTableTopConstructionMaterial	
R	Surface Finish - outermost coating applied, aesthetic or protective	Select from pick list: domSurfaceFinish	
S	Frame construction material	Select from pick list: domFrameConstructionMaterial	
T	Footpad - What is the foundation under the table made of?	Select from pick list: domFootPad	
<hr/>			
Additional Information			
*All other columns must be left "blank" or hold the value "LEAVE BLANK" as default in CAT See Appendix C.1.2 for a CAT example.			

An item of furniture consisting of a flat horizontal slab supported on a frame.

Centre of structure
X Y






Picnic table with a wooden table top and fame, painted surface finish and concrete footpat.



This chessboard on the table top gives it an artwork component. This is a concrete table with concrete frame, painted surface finish.

As-Built requirements (PRK)

K13: Plaque	Name	Plaque (Point)		<p>An inscribed commemorative tablet placed near an item of interest.</p> <p style="text-align: center;">Centre of structure X Y</p>  <p style="text-align: center;">Bronze plaque attached to a low concrete wall.</p>  <p style="text-align: center;">Brass plaque attached to a stone plinth.</p>	
	Point Type	K13 "Point Asset Inputs"			
	CAT Column	SAG Description			Valid Values
	A	Type of point feature			K13
	B	LEAVE BLANK			
	C	Existing or New Asset			Select from pick list: domExisitngOrNew
	D	Differs from design (yes/no)			Select from pick list: domDiffersFromDesign
	E	Unique identifier from drawing			data - text
	F	Centre of structure in Easting coordinate			data - decimal number
	G	Centre of structure in Northing coordinate			data - decimal number
H	LEAVE BLANK				
I	Date of commission	data - date (dd/mm/yyyy)			
J	Location certainty - accuracy of data	Select from pick list: domLocationCertainty			
K	Name of main contractor whom installed asset	data - text (30 Characters)			
L	Date of 'survey-start'	data - date (dd/mm/yyyy)			
M	Guideline revision used for survey	Select from pick list: domSurveyGuidelineID			
N	Long Description - explanation, further details, or location within park	data - text (70 Characters)			
O	Artwork - has it an aspect of creative, aesthetic, or decorative beauty?	Select from pick list: domArtWork			
P	File name of photo. Photo must be supplied.	data - text (30 Characters)			
Q	Construction Material - main substance the asset is made of	Select from pick list: domConstructionMaterial			
R	Surface Protection - coating applied for protection from its environment.	Select from pick list: domSurfaceProtection			
S	Attached To - What is the plaque fixed to?	Select from pick list: domAttachedTo			
Additional Information					
*All other columns must be left "blank" or hold the value "LEAVE BLANK" as default in CAT See Appendix C.1.2 for a CAT example.					

As-Built requirements (PRK)

Name	Pool (Outline)
Polygon Type	K14 "Polygon Asset Inputs"



A manmade excavation or basin capable of holding still water for ornamental or recreational purposes (e.g. swimming, paddling).

Outline of structure
X Y

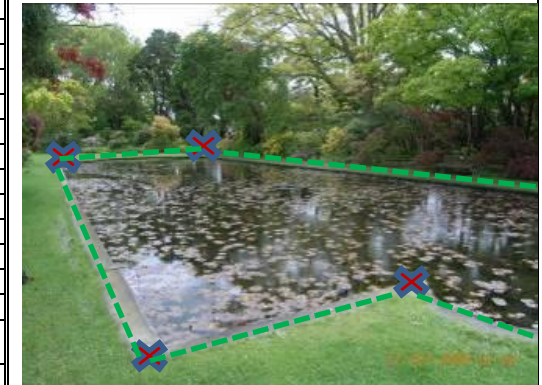
K14: Pool

CAT Column	SAG Description	Valid Values
A	Type of polygon feature	K14
B	Specific type of Pool	Select from pick list: domPoolType
C	Existing or New Asset	Select from pick list: domExistingOrNew
D	Differs from design (yes/no)	Select from pick list: domDiffersFromDesign
E	Unique identifier from drawing	data - text
F	Polygon Vertex Easting coordinate	data - decimal number
G	Polygon Vertex Northing coordinate	data - decimal number
H	Order of vertex/point along polygon	data - number
I	Date of commission	data - date (dd/mm/yyyy)
J	Location certainty - accuracy of data	Select from pick list: domLocationCertainty
K	Name of main contractor whom installed asset	data - text (30 Characters)
L	Date of 'survey-start'	data - date (dd/mm/yyyy)
M	Guideline revision used for survey	Select from pick list: domSurveyGuidelineID
N	Long Description - explanation, further details, or location within park	data - text (70 Characters)
O	Artwork - has it an aspect of creative, aesthetic, or decorative beauty?	Select from pick list: domArtWork
P	File name of photo. Photo must be supplied.	data - text (30 Characters)
Q	Edge type - Construction material of the surround	Select from pick list: domEdgeType
R	Water Source - origin of the hydration	Select from pick list: domWaterSource
S	Water treatment required? - Does the water require treatment to be of acceptable quality?	Select from pick list: domWaterTreatmentRequired
T	Depth - vertical distance between the top and bottom, measured in metres.	data - decimal number (12 Chars, 2 Decimals)

Additional Information

*All other columns must be left "blank" or hold the value "LEAVE BLANK" as default in CAT
See Appendix C.1.2 for a CAT example.
Col G: enter number of vertex along outline

All corner points along outline to be surveyed.
Create one CAT row per surveyed point.



Ornamental pool.



Paddling pool.

As-Built requirements (PRK)

K15: Seat	Name	Seat (Point)	●	A structure designed to support a person in the sitting position.
	Point Type	K15 "Point Asset Inputs"		
	CAT Column	SAG Description	Valid Values	
	A	Type of point feature	K15	
	B	Specific type of seat	Select from pick list: domSeatType	
	C	Existing or New Asset	Select from pick list: domExistingOrNew	
	D	Differs from design (yes/no)	Select from pick list: domDiffersFromDesign	
	E	Unique identifier from drawing	data - text	
	F	Centre of structure in Easting coordinate	data - decimal number	
	G	Centre of structure in Northing coordinate	data - decimal number	
	H	LEAVE BLANK		
	I	Date of commission	data - date (dd/mm/yyyy)	
	J	Location certainty - accuracy of data	Select from pick list: domLocationCertainty	
	K	Name of main contractor whom installed asset	data - text (30 Characters)	
L	Date of 'survey-start'	data - date (dd/mm/yyyy)		
M	Guideline revision used for survey	Select from pick list: domSurveyGuidelineID		
N	Long Description - explanation, further details, or location within park	data - text (70 Characters)		
O	Artwork - has it an aspect of creative, aesthetic, or decorative beauty?	Select from pick list: domArtWork		
P	File name of photo. Photo must be supplied.	data - text (30 Characters)		
Q	Seat style - describe general shape and form	Select from pick list: domSeatStyle		
R	Seat Construction Material - main substance the surface for sitting on is made of.	Select from pick list: domSeatConstructionMaterial		
S	Frame Construction Material - main substance the seat support structure is made of.	Select from pick list: domFrameConstructionMaterial		
T	Surface Finish - outermost coating applied, aesthetic or protective	Select from pick list: domSurfaceFinish		
U	Length - longest horizontal dimension, measured in metres	data - decimal number		
V	Footpad - What is the foundation under the seat made of?	Select from pick list: domFootPad		
W	Donated - was this Seat donated, if so by which group?	Select from pick list: domDonated		
Additional Information				
*All other columns must be left "blank" or hold the value "LEAVE BLANK" as default in CAT See Appendix C.1.2 for a CAT example.				

Centre of structure
X Y



Wooden bench, steel frame, fixed within wall, varnished, and has no foot pad.



Stone seat, fixed to the ground, with a concrete footpad.

As-Built requirements (PRK)

Name	Shower (Point)	
Point Type	K16 "Point Asset Inputs"	

A stand alone or wall mounted shower, typically installed at or near a beach for washing off salt water and sand.

Centre of structure
X Y

K16: Shower

CAT Column	SAG Description	Valid Values
A	Type of point feature	K16
B	LEAVE BLANK	
C	Existing or New Asset	Select from pick list: domExistngOrNew
D	Differs from design (yes/no)	Select from pick list: domDiffersFromDesign
E	Unique identifier from drawing	data - text
F	Centre of structure in Easting coordinate	data - decimal number
G	Centre of structure in Northing coordinate	data - decimal number
H	LEAVE BLANK	
I	Date of commission	data - date (dd/mm/yyyy)
J	Location certainty - accuracy of data	Select from pick list: domLocationCertainty
K	Name of main contractor whom installed asset	data - text (30 Characters)
L	Date of 'survey-start'	data - date (dd/mm/yyyy)
M	Guideline revision used for survey	Select from pick list: domSurveyGuidelineID
N	Long Description - explanation, further details, or location within park	data - text (70 Characters)
O	Artwork - has it an aspect of creative, aesthetic, or decorative beauty?	Select from pick list: domArtWork
P	File name of photo. Photo must be supplied.	data - text (30 Characters)
Q	Construction Material - main substance the asset is made of	Select from pick list: domConstructionMaterial
R	Surface Finish - outermost coating applied, aesthetic or protective	Select from pick list: domSurfaceFinish
S	Number of shower heads - how many shower heads are attached to the structure?	data - number (2 Chars)
T	Tap - is there a tap as part of the structure?	Select from pick list: domTap
U	Waste type - where does the water go after shower use?	Select from pick list: domWasteType
V	Supply type - How is water supplied to the shower?	Select from pick list: domSupplyType

Additional Information

*All other columns must be left "blank" or hold the value "LEAVE BLANK" as default in CAT
See Appendix C.1.2 for a CAT example.



Steel shower, galvanised surface finish, one shower head, and a tap, and a grate to the wastewater system.

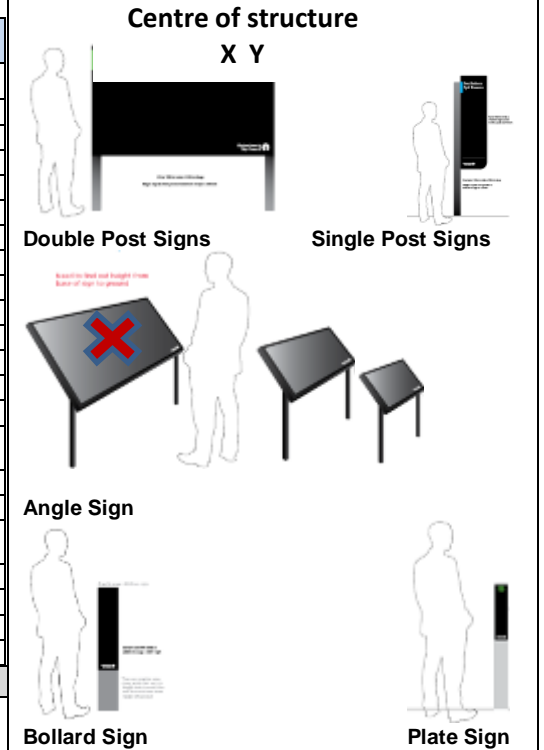
As-Built requirements (PRK)

K17: Sign

Name		Sign (Point)
Point Type		K17 "Point Asset Inputs"
CAT Column		
SAG Description	Valid Values	
A	Type of point feature	K17
B	Primary sign type (primary type of information supplied)	Select from pick list: domSignType
C	Existing or New Asset	Select from pick list: domExistingOrNew
D	Differs from design (yes/no)	Select from pick list: domDiffersFromDesign
E	Unique identifier from drawing	data - text
F	Centre of structure in Easting coordinate	data - decimal number
G	Centre of structure in Northing coordinate	data - decimal number
H	LEAVE BLANK	
I	Date of commission	data - date (dd/mm/yyyy)
J	Location certainty - accuracy of data	Select from pick list: domLocationCertainty
K	Name of main contractor whom installed asset	data - text (30 Characters)
L	Date of 'survey-start'	data - date (dd/mm/yyyy)
M	Guideline revision used for survey	Select from pick list: domSurveyGuidelineID
N	Long Description - explanation, further details, or location within park	data - text (70 Characters)
O	Artwork - has it an aspect of creative, aesthetic, or decorative beauty?	Select from pick list: domArtWork
P	File name of photo. Photo must be supplied.	data - text (30 Characters)
Q	Sign Style - category of design e.g. single post, double post, panel	Select from pick list: domSignStyle
R	Panel Construction Material - material the face of the sign is made of	Select from pick list: domPanelConstructionMaterial
S	Post Material - material the sign support(s) is made of	Select from pick list: domPostMaterial
T	Panel Width - horizontal distance across the sign face in millimetres	data - number (5 Chars)
U	Panel Height - vertical distance across the sign face in millimetres	data - number (5 Chars)
V	Secondary sign type (if more than one type of information supplied)	Select from pick list: domSecondarySignType
Additional Information		
*All other columns must be left "blank" or hold the value "LEAVE BLANK" as default in CAT See Appendix C.1.2 for a CAT example.		



A notice, bearing a name, direction, warning, symbol, or advertisement, which is displayed or posted for public view.



As-Built requirements (PRK)

Name	Tree Cage (Point)	●
Point Type	K18 "Point Asset Inputs"	

A structure or frame that surrounds a tree for support or protection

Centre of structure
X Y

K18: Tree Cage

CAT Column	SAG Description	Valid Values
A	Type of point feature	K18
B	LEAVE BLANK	
C	Existing or New Asset	Select from pick list: domExisitngOrNew
D	Differs from design (yes/no)	Select from pick list: domDiffersFromDesign
E	Unique identifier from drawing	data - text
F	Centre of structure in Easting coordinate	data - decimal number
G	Centre of structure in Northing coordinate	data - decimal number
H	LEAVE BLANK	
I	Date of commission	data - date (dd/mm/yyyy)
J	Location certainty - accuracy of data	Select from pick list: domLocationCertainty
K	Name of main contractor whom installed asset	data - text (30 Characters)
L	Date of 'survey-start'	data - date (dd/mm/yyyy)
M	Guideline revision used for survey	Select from pick list: domSurveyGuidelineID
N	Long Description - explanation, further details, or location within park	data - text (70 Characters)
O	Artwork - has it an aspect of creative, aesthetic, or decorative beauty?	Select from pick list: domArtWork
P	File name of photo. Photo must be supplied.	data - text (30 Characters)
Q	Construction Material - main substance the asset is made of	Select from pick list: domConstructionMaterial



Additional Information

*All other columns must be left "blank" or hold the value "LEAVE BLANK" as default in CAT
See Appendix C.1.2 for a CAT example.

As-Built requirements (PRK)

Name	Tree Grate (Point)	●
Point Type	K19 "Point Asset Inputs"	

A frame surrounding the base of a tree protecting the root structure

Centre of structure
X Y

K19: Tree Grate


CAT Column	SAG Description	Valid Values
A	Type of point feature	K19
B	LEAVE BLANK	
C	Existing or New Asset	Select from pick list: domExisitngOrNew
D	Differs from design (yes/no)	Select from pick list: domDiffersFromDesign
E	Unique identifier from drawing	data - text
F	Centre of structure in Easting coordinate	data - decimal number
G	Centre of structure in Northing coordinate	data - decimal number
H	LEAVE BLANK	
I	Date of commission	data - date (dd/mm/yyyy)
J	Location certainty - accuracy of data	Select from pick list: domLocationCertainty
K	Name of main contractor whom installed asset	data - text (30 Characters)
L	Date of 'survey-start'	data - date (dd/mm/yyyy)
M	Guideline revision used for survey	Select from pick list: domSurveyGuidelineID
N	Long Description - explanation, further details, or location within park	data - text (70 Characters)
O	Artwork - has it an aspect of creative, aesthetic, or decorative beauty?	Select from pick list: domArtWork
P	File name of photo. Photo must be supplied.	data - text (30 Characters)
Q	Construction Material - main substance the asset is made of	Select from pick list: domConstructionMaterial



Additional Information

*All other columns must be left "blank" or hold the value "LEAVE BLANK" as default in CAT
See Appendix C.1.2 for a CAT example.

As-Built requirements (PRK)

K20: Tree Planter	Name	Tree Planter (Point)	<p>A container for planting trees in Centre of structure X Y</p> 	
	Point Type	K20 "Point Asset Inputs"		
	CAT Column	SAG Description		Valid Values
	A	Type of point feature		K20
	B	LEAVE BLANK		
	C	Existing or New Asset		Select from pick list: domExisitngOrNew
	D	Differs from design (yes/no)		Select from pick list: domDiffersFromDesign
	E	Unique identifier from drawing		data - text
	F	Centre of structure in Easting coordinate		data - decimal number
	G	Centre of structure in Northing coordinate		data - decimal number
H	LEAVE BLANK			
I	Date of commission	data - date (dd/mm/yyyy)		
J	Location certainty - accuracy of data	Select from pick list: domLocationCertainty		
K	Name of main contractor whom installed asset	data - text (30 Characters)		
L	Date of 'survey-start'	data - date (dd/mm/yyyy)		
M	Guideline revision used for survey	Select from pick list: domSurveyGuidelineID		
N	Long Description - explanation, further details, or location within park	data - text (70 Characters)		
O	Artwork - has it an aspect of creative, aesthetic, or decorative beauty?	Select from pick list: domArtWork		
P	File name of photo. Photo must be supplied.	data - text (30 Characters)		
Q	Construction Material - main substance the asset is made of	Select from pick list: domConstructionMaterial		
Additional Information				
*All other columns must be left "blank" or hold the value "LEAVE BLANK" as default in CAT See Appendix C.1.2 for a CAT example.				

As-Built requirements (PRK)

K21: Water Feature	Name	Water Feature (Point)	
	Point Type	K21 "Point Asset Inputs"	
	CAT Column	SAG Description	Valid Values
	A	Type of point feature	K21
	B	LEAVE BLANK	
	C	Existing or New Asset	Select from pick list: domExisitngOrNew
	D	Differs from design (yes/no)	Select from pick list: domDiffersFromDesign
	E	Unique identifier from drawing	data - text
	F	Centre of structure in Easting coordinate	data - decimal number
	G	Centre of structure in Northing coordinate	data - decimal number
H	LEAVE BLANK		
I	Date of commission	data - date (dd/mm/yyyy)	
J	Location certainty - accuracy of data	Select from pick list: domLocationCertainty	
K	Name of main contractor whom installed asset	data - text (30 Characters)	
L	Date of 'survey-start'	data - date (dd/mm/yyyy)	
M	Guideline revision used for survey	Select from pick list: domSurveyGuidelineID	
N	Long Description - explanation, further details, or location within park	data - text (70 Characters)	
O	Artwork - has it an aspect of creative, aesthetic, or decorative beauty?	Select from pick list: domArtWork	
P	File name of photo. Photo must be supplied.	data - text (30 Characters)	
Q	Construction Material - refers to the structure supporting the nozzles and not the nozzles themselves.	Select from pick list: domConstructionMaterial	
R	Water Feature Style	Select from pick list: domWaterFeatureStyle	
S	Number of nozzles - how many nozzles are there for water to be projected.	data - number (12 Chars)	
Additional Information			
*All other columns must be left "blank" or hold the value "LEAVE BLANK" as default in CAT See Appendix C.1.2 for a CAT example.			



A device that circulates water for the purpose of creating an aesthetic display.

Centre of structure
X Y



Formal water feature

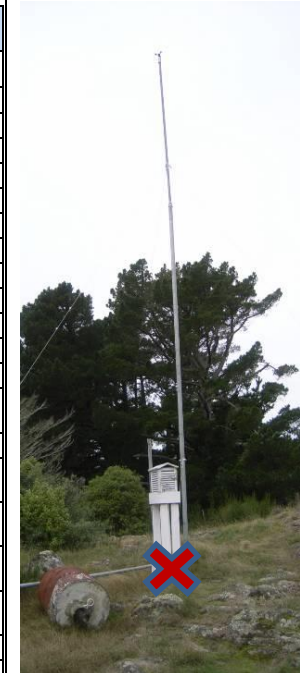
Where a water feature is installed in a pond as above, the structure in the centre of the pond, and the pond is a separate asset. Where small area of water is part of the water feature below, the ponds are part of the water feature and should not be recorded separately.



Informal water feature


As-Built requirements (PRK)

K22: Weather Station	Name	Weather Station (Point)	●	A collection of instruments, housed together for monitoring meteorological conditions
	Point Type	K22 "Point Asset Inputs"		
	Centre of structure			
	X Y			
	CAT Column	SAG Description	Valid Values	
	A	Type of point feature	K22	
	B	LEAVE BLANK		
	C	Differs from design (yes/no)	Select from pick list: domDiffersFromDesign	
	D	Unique identifier from drawing	data - text	
	E	Centre of structure in Easting coordinate	data - decimal number	
F	Centre of structure in Northing coordinate	data - decimal number		
G	LEAVE BLANK			
H	Date of commission	data - date (dd/mm/yyyy)		
I	Location certainty - accuracy of data	Select from pick list: domLocationCertainty		
J	Name of main contractor whom installed asset	data - text (30 Characters)		
K	Date of 'survey-start'	data - date (dd/mm/yyyy)		
L	Guideline revision used for survey	Select from pick list: domSurveyGuidelineID		
M	Long Description - explanation, further details, or location within park	data - text (70 Characters)		
N	Artwork - has it an aspect of creative, aesthetic, or decorative beauty?	Select from pick list: domArtWork		
O	File name of photo. Photo must be supplied.	data - text (30 Characters)		
P	Weather Station Purpose - Reason for monitoring the weather at this location.	Select from pick list: domWeatherStationPurpose		
Q	Wet bulb thermometer - does the weather station have a temperature sensor that is covered by a damp fabric sock?	Select from pick list: domWetBulbThermometer		
R	Dry bulb thermometer - does the weather station have a temperature sensor that is NOT covered by a damp fabric sock?	Select from pick list: domDryBulbThermometer		
S	Rain Gauge - an instrument that measures the amount of precipitation.	Select from pick list: domRainGauge		
T	Anemometer - measures the speed of wind	Select from pick list: domAnemometer		
U	Anemometerpole - vertical staff that holds an instrument for measuring the speed of wind.	Select from pick list: domAnemometerpole		
V	Barometer - instrument that measures atmospheric pressure	Select from pick list: domBarometer		
W	Stevensons Screen - ventilated structure that houses wet/dry bulb	Select from pick list: domStevensonsScreen		
Additional Information				
*All other columns must be left "blank" or hold the value "LEAVE BLANK" as default in CAT See Appendix C.1.2 for a CAT example.				



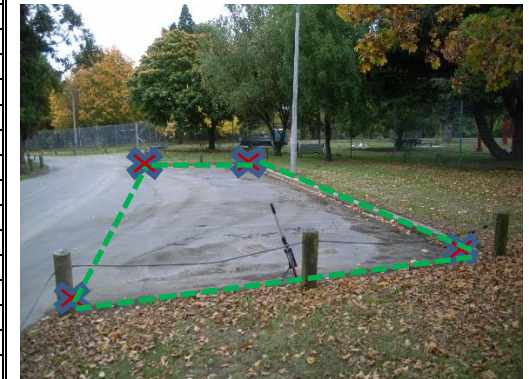
The white box is a Stevenson screen and contains sensors. The tall pole is an anemometer pole with an anemometer on top.

As-Built requirements (PRK)

L01: Car Park	Name	Car Park (Outline)		
	Polygon Type	L01 "Polygon Asset Inputs"		
	Additional Information			
	CAT Column	SAG Description	Valid Values	
	A	Type of polygon feature	L01	
	B	LEAVE BLANK		
	C	Existing or New Asset	Select from pick list: domExistingOrNew	
	D	Differs from design (yes/no)	Select from pick list: domDiffersFromDesign	
	E	Unique identifier from drawing	data - text	
	F	Polygon Vertex Easting coordinate	data - decimal number	
G	Polygon Vertex Northing coordinate	data - decimal number		
H	Order of vertex/point along polygon	data - number		
I	Date of commission	data - date (dd/mm/yyyy)		
J	Location certainty - accuracy of data	Select from pick list: domLocationCertainty		
K	Name of main contractor whom installed asset	data - text (30 Characters)		
L	Date of 'survey-start'	data - date (dd/mm/yyyy)		
M	Guideline revision used for survey	Select from pick list: domSurveyGuidelineID		
N	Long Description - explanation, further details, or location within park	data - text (70 Characters)		
O	Artwork - has it an aspect of creative or aesthetic beauty?	Select from pick list: domArtWork		
P	File name of photo. Photo must be supplied.	data - text (30 Characters)		
Q	Surface Material - Substance applied to uppermost covering	Select from pick list: domSurfaceMaterial		
R	Surface Function	Select from pick list: domSurfaceFunction		
S	Top Coat Life Cycle	data - text (30 Characters)		
T	Date of first coat	data - date (dd/mm/yyyy)		
U	Date surface life expires	data - date (dd/mm/yyyy)		
V	Date last resurfaced	data - date (dd/mm/yyyy)		
W	Base Course Material	Select from pick list: domBaseCourseMaterial		
X	Base Course Depth - measured in millimetres	data - decimal number (12 Chars, 1 Decimals)		
Y	Date Base Course Installed	data - date (dd/mm/yyyy)		
Z	Base Life Cycle	data - text (30 Characters)		
AA	Date Base Course Life Expires	data - date (dd/mm/yyyy)		
AB	Kerb Type	Select from pick list: domKerbType		
AC	Kerb Length - measured in metres	data - decimal number (12 Chars, 1 Decimals)		
AD	Road Markings	Select from pick list: domRoadMarkings		
AE	Usage Level	Select from pick list: domUsageLevel		
AF	Total Number Of Spaces	data - number (12 Chars)		
AG	Number of Disabled Spaces	data - number (12 Chars)		
AH	Wheel Stops	data - number (12 Chars)		
AI	Vehicle Counters	Select from pick list: domVehicleCounters		
AJ	Number of Sumps	Data - number (12 Chars)		
Additional Information				

A dedicated area for parking cars, which includes the driveway, if it terminates at the car park. If the driveway continues through it is considered a Track.


Outline of structure
X Y



*All other columns must be left "blank" or hold the value "LEAVE BLANK" as default in CAT
See Appendix C.1.2 for a CAT example.
Col G: enter number of vertex along outline

All corner points along outline to be surveyed.
Create one CAT row per surveyed point.

As-Built requirements (PRK)

L02: Judder Bar	Name	Judder Bar (Point)		<p>Constructed at the road surface to encourage vehicle drivers to slow down.</p> <p>Centre of structure X Y</p> 
	Point Type	L02 "Point Asset Inputs"		
	CAT Column	SAG Description	Valid Values	
	A	Type of point feature	L02	
	B	Specific type of Judder Bar	Select from pick list: domJudderBarType	
	C	Existing or New Asset	Select from pick list: domExistingOrNew	
	D	Differs from design (yes/no)	Select from pick list: domDiffersFromDesign	
	E	Unique identifier from drawing	data - text	
	F	Centre of structure in Easting coordinate	data - decimal number	
	G	Centre of structure in Northing coordinate	data - decimal number	
H	LEAVE BLANK			
I	Date of commission	data - date (dd/mm/yyyy)		
J	Location certainty - accuracy of data	Select from pick list: domLocationCertainty		
K	Name of main contractor whom installed asset	data - text (30 Characters)		
L	Date of 'survey-start'	data - date (dd/mm/yyyy)		
M	Guideline revision used for survey	Select from pick list: domSurveyGuidelineID		
N	Long Description - explanation, further details, or location within park	data - text (70 Characters)		
O	Artwork - has it an aspect of creative, aesthetic, or decorative beauty?	Select from pick list: domArtWork		
P	File name of photo. Photo must be supplied.	data - text (30 Characters)		
Additional Information				
*All other columns must be left "blank" or hold the value "LEAVE BLANK" as default in CAT See Appendix C.1.2 for a CAT example.				

Single judder bar with painted markings. Not all judder bars will be marked or as large as this one.

As-Built requirements (PRK)

Name **Ramp (Outline)**
 Polygon Type **L03 "Polygon Asset Inputs"**



An inclined flat surface providing access for wheeled objects between adjacent areas of different heights.

Outline of structure
X Y

L03: Ramp

CAT Column	SAG Description	Valid Values
A	Type of polygon feature	L03
B	LEAVE BLANK	
C	Existing or New Asset	Select from pick list: domExistngOrNew
D	Differs from design (yes/no)	Select from pick list: domDiffersFromDesign
E	Unique identifier from drawing	data - text
F	Polygon Vertex Easting coordinate	data - decimal number
G	Polygon Vertex Northing coordinate	data - decimal number
H	Order of vertex/point along polygon	data - number
I	Date of commission	data - date (dd/mm/yyyy)
J	Location certainty - accuracy of data	Select from pick list: domLocationCertainty
K	Name of main contractor whom installed asset	data - text (30 Characters)
L	Date of 'survey-start'	data - date (dd/mm/yyyy)
M	Guideline revision used for survey	Select from pick list: domSurveyGuidelineID
N	Long Description - explanation, further details, or location within park	data - text (70 Characters)
O	Artwork - has it an aspect of creative or aesthetic beauty?	Select from pick list: domArtWork
P	File name of photo. Photo must be supplied.	data - text (30 Characters)
Q	Construction Material - main substance the asset is made of	Select from pick list: domConstructionMaterial
R	Non Slip Surface Type - material applied to the surface to increase friction	Select from pick list: domNonSlipSurfaceType
S	Handrail - does the ramp have a bar alongside that can be used by a person for support?	Select from pick list: domHandrail
T	Length - measured in metres	data - decimal number (12 Chars, 2 Decimals)
U	Width - measured in metres	data - decimal number (12 Chars, 2 Decimals)



Additional Information

*All other columns must be left "blank" or hold the value "LEAVE BLANK" as default in CAT
 See Appendix C.1.2 for a CAT example.
 Col G: enter number of vertex along outline

All corner points along outline to be surveyed.
 Create one CAT row per surveyed point.

As-Built requirements (PRK)

Name
Polygon Type

Track (Outline)
L04 "Polygon Asset Inputs "

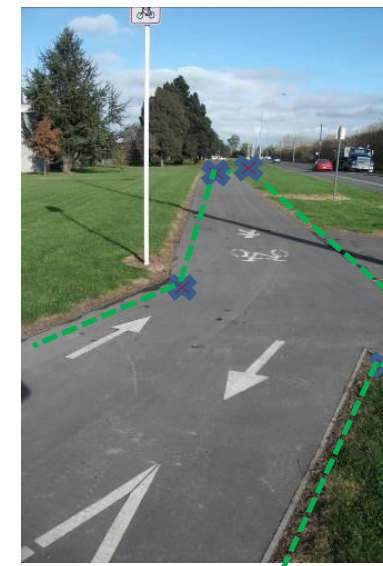


A footpath or road, either sealed or unsealed, through a natural area or park.

L04: Track

CAT Column	SAG Description	Valid Values
A	Type of polygon feature	L04
B	Intended Traffic - Intended method(s) of transportation that the track has been installed to support.	from pick list: domIntendedTraffic
C	Existing or New Asset	Select from pick list: domExistingOrNew
D	Differs from design (yes/no)	Select from pick list: domDiffersFromDesign
E	Unique identifier from drawing	data - text
F	Polygon Vertex Easting coordinate	data - decimal number
G	Polygon Vertex Northing coordinate	data - decimal number
H	Order of vertex/point along polygon	data - number
I	Date of commission	data - date (dd/mm/yyyy)
J	Location certainty - accuracy of data	Select from pick list: domLocationCertainty
K	Name of main contractor whom installed asset	data - text (30 Characters)
L	Date of 'survey-start'	data - date (dd/mm/yyyy)
M	Guideline revision used for survey	Select from pick list: domSurveyGuidelineID
N	Long Description - explanation, further details, or location within park	data - text (70 Characters)
O	Artwork - has it an aspect of creative or aesthetic beauty?	Select from pick list: domArtWork
P	File name of photo. Photo must be supplied.	data - text (30 Characters)
Q	Surface Material - substance applied to uppermost covering	from pick list: domSurfaceMaterial
R	Kerb Type	Select from pick list: domKerbType
S	Width - measured in metres	data - decimal number (12 Chars 2 Decimals)
T	Length - measured in metres	data - decimal number (12 Chars, 1 Decimal)
U	Track Drainage - type of structure that assists with water run-off	Select from pick list: domTrackDrainage
V	Track Category Mountain Bike	Select from pick list: domTrackCategoryMountainBike
W	Track Specification Pedestrian	Select from pick list: domTrackSpecPedestrian
X	Easement - Is there an easement?	Select from pick list: domEasement
Y	Final surface depth - measured in millimetres	data - decimal number (12 Chars, 1 Decimal)
Z	Base course material	Select from pick list: domBaseCourseMaterial
AA	Base course depth - measured in millimetres	data - decimal number (12 Chars, 1 Decimal)
AB	Track accessibility class - How difficult is this track to traverse?	Select from pick list: domTrackAccessibilityClass
AC	Date accessibility standard met?	data - date (dd/mm/yyyy)
AD	Date of first coat	data - date (dd/mm/yyyy)
AF	Date last resurfaced	data - date (dd/mm/yyyy)

Outline of structure
X Y



Additional Information

*All other columns must be left "blank" or hold the value "LEAVE BLANK" as default in CAT
See Appendix C.1.2 for a CAT example.
Col G: enter number of vertex along outline

All corner points along outline to be surveyed.
Create one CAT row per surveyed point.

As-Built requirements (PRK)

Name
Polygon Type

Terraces (Outline)

L05 "Polygon Asset Inputs "



A series of level hard surfaces on a slope resembling steps. Stairs, handrails, ramps are separate assets, and are to be captured separately.

Outline of structure

X Y

L05: Terraces

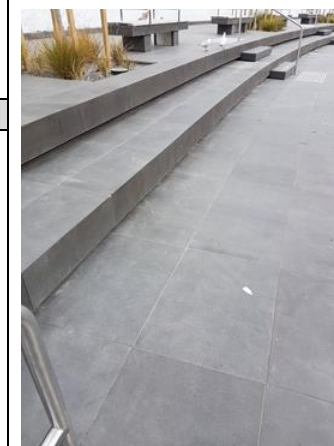
CAT Column	SAG Description	Valid Values
A	Type of polygon feature	L05
B	LEAVE BLANK	
C	Existing or New Asset	Select from pick list: domExistingOrNew
D	Differs from design (yes/no)	Select from pick list: domDiffersFromDesign
E	Unique identifier from drawing	data - text
F	Polygon Vertex Easting coordinate	data - decimal number
G	Polygon Vertex Northing coordinate	data - decimal number
H	Order of vertex/point along polygon	data - number
I	Date of commission	data - date (dd/mm/yyyy)
J	Location certainty - accuracy of data	Select from pick list: domLocationCertainty
K	Name of main contractor whom installed asset	data - text (30 Characters)
L	Date of 'survey-start'	data - date (dd/mm/yyyy)
M	Guideline revision used for survey	Select from pick list: domSurveyGuidelineID
N	Long Description - explanation, further details, or location within park	data - text (70 Characters)
O	Artwork - has it an aspect of creative or aesthetic beauty?	Select from pick list: domArtWork
P	File name of photo. Photo must be supplied.	data - text (30 Characters)
Q	Construction Material - main substance the asset is made of	Select from pick list: domConstructionMaterial2
R	Width - total width of terraced area, from the top to the bottom, measured in metres	data - decimal number (12 Chars 2 Decimals)
S	Length - total length of terraced area, running along the river bank, measured in metres	data - decimal number (12 Chars, 1 Decimal)
T	Number of terrace steps that make up the whole terraced area	data - number
U	Terraces inscribed, have any of the terrace steps been inscribed? Y/N	Select from pick list: domInscribed

Additional Information

*All other columns must be left "blank" or hold the value "LEAVE BLANK" as default in CAT
See Appendix C.1.2 for a CAT example.

Col G: enter number of vertex along outline

All corner points along outline to be surveyed.
Create one CAT row per surveyed point.



As-Built requirements (PRK)

Name Dog Exercise Area (Polygon) 
Polygon Type M01 "Polygon Asset Inputs"

A space within a park set aside specifically for dogs to exercise.

M01: Dog Exercise Area

CAT Column	SAG Description	Valid Values
A	Type of polygon feature	M01
B	LEAVE BLANK	LEAVE BLANK
C	Existing or New Asset	Select from pick list: domExisitngOrNew
D	Differs from design (yes/no)	Select from pick list: domDiffersFromDesign
E	Unique identifier from drawing	data - text
F	Polygon Vertex Easting coordinate	data - decimal number
G	Polygon Vertex Northing coordinate	data - decimal number
H	Order of vertex / point along polygon	data - number
I	Date of commission	data - date (dd/mm/yyyy)
J	Location certainty - accuracy of data	Select from pick list: domLocationCertainty
K	Name of main contractor who installed asset	data - text (30 Characters)
L	Date of 'survey-start'	data - date (dd/mm/yyyy)
M	Guideline revision used for survey	Select from pick list: domSurveyGuidelineID
N	Long Description - explanation, further details, or location within park	data - text (70 Characters)
O	Artwork - has it an aspect of creative, aesthetic, or decorative beauty?	Select from pick list: domArtWork
P	File name of photo. Photo must be supplied.	data - text (30 Characters)

Outline of structure
X Y



Additional Information

*All other columns must be left "blank" or hold the value "LEAVE BLANK" as default in CAT
 See Appendix C.1.2 for a CAT example.
 Col G: enter number of vertex along outline

All corner points along outline to be surveyed.
 Create one CAT row per surveyed point.

As-Built requirements (PRK)

M02 : Dog Exercise Equipment

Name		Dog Exercise Equipment (Point)	●
Point Type		M02 "Point Asset Inputs"	
CAT Column			
SAG Description		Valid Values	
A	Type of Point feature	M02	
B	Specific type of dog exercise equipment (e.g. Table, Bag Dispenser, Crossover, tunnel, etc.)	Select from pick list: domDogExcerciseEquipmentType	
C	Existing or New Asset	Select from pick list: domExisitngOrNew	
D	Differs from design (yes/no)	Select from pick list: domDiffersFromDesign	
E	Unique identifier from drawing	data - text	
F	Centre of structure in Easting coordinate	data - decimal number	
G	Centre of structure in Northing coordinate	data - decimal number	
H	LEAVE BLANK	LEAVE BLANK	
I	Date of commission	data - date (dd/mm/yyyy)	
J	Location certainty - accuracy of data	Select from pick list: domLocationCertainty	
K	Name of main contractor who installed asset	data - text (30 Characters)	
L	Date of 'survey-start'	data - date (dd/mm/yyyy)	
M	Guideline revision used for survey	Select from pick list: domSurveyGuidelineID	
N	Long Description - explanation, further details, or location within park	data - text (70 Characters)	
O	Artwork - has it an aspect of creative, aesthetic, or decorative beauty?	Select from pick list: domArtWork	
P	File name of photo. Photo must be supplied.	data - text (30 Characters)	
Q	Construction Material - main substance the asset is made of	Select from pick list: domConstructionMaterial	
Additional Information			
*All other columns must be left "blank" or hold the value "LEAVE BLANK" as default in CAT See Appendix C.1.2 for a CAT example.			

A structure designed to cater for the recreational and training needs of canines through physical activity.

Centre of structure
X Y



A Bag Dispenser(red) alongside a Canine Waste bin(green).

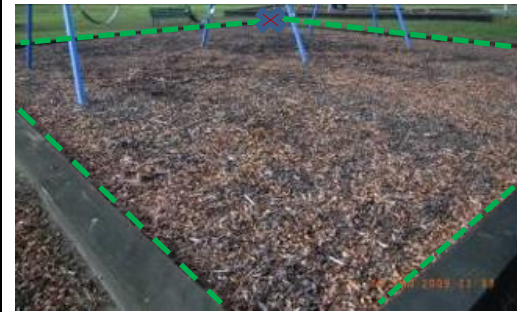
As-Built requirements (PRK)

Name	Playground Surface (Polygon)
Polygon Type	M03 "Polygon asset Inputs"



A shock absorbing surface installed under play equipment to reduce the likelihood of playground users suffering fall injuries.

Outline of structure
X Y



M03 : Playground Surface

CAT Column	SAG Description	Valid Values
A	Type of polygon feature	M03
B	Type of Play Surface (Bark, Grass, etc.)	Select from pick list: domSurfaceType
C	Existing or New Asset	Select from pick list: domExisitngOrNew
D	Differs from design (yes/no)	Select from pick list: domDiffersFromDesign
E	Unique identifier from drawing	data - text
F	Polygon Vertex Easting coordinate	data - decimal number
G	Polygon Vertex Northing coordinate	data - decimal number
H	Order of vertex / point along polygon	data - number
I	Date of commission	data - date (dd/mm/yyyy)
J	Location certainty - accuracy of data	Select from pick list: domLocationCertainty
K	Name of main contractor who installed asset	data - text (30 Characters)
L	Date of 'survey-start'	data - date (dd/mm/yyyy)
M	Guideline revision used for survey	Select from pick list: domSurveyGuidelineID
N	Long Description - explanation, further details, or location within park	data - text (70 Characters)
O	Artwork - has it an aspect of creative, aesthetic, or decorative beauty?	Select from pick list: domArtWork
P	File name of photo. Photo must be supplied.	data - text (30 Characters)
Q	Surface Level - elevation in relation to the immediate surrounds	Select from pick list: domSurfaceLevel
R	Surround Construction Material - substance from which the edge of the playing area is built.	Select from pick list: domSurroundConstructionMaterial
S	Surface Thickness - measured in millimetres	data - number (4 Chars)

Additional Information

*All other columns must be left "blank" or hold the value "LEAVE BLANK" as default in CAT
See Appendix C.1.2 for a CAT example.
Col G: enter number of vertex along outline

All corner points along outline to be surveyed.
Create one CAT row per surveyed point.

As-Built requirements (PRK)

M04: Play Equipment

Name	Play Equipment (Point)	
Point Type	M04 "Point Asset Input"	
CAT Column	SAG Description	Valid Values
A	Type of Point feature	M04
B	Specific type of Play Equipment Type - the predominant style of recreational device (e.g. Platform, Slide, Swing, Flying Fox, Ladders, etc.)	Select from pick list: domPlayEquipmentType
C	Existing or New Asset	Select from pick list: domExistingOrNew
D	Differs from design (yes/no)	Select from pick list: domDiffersFromDesign
E	Unique identifier from drawing	data - text
F	Centre of structure in Easting coordinate	data - decimal number
G	Centre of structure in Northing coordinate	data - decimal number
H	LEAVE BLANK	LEAVE BLANK
I	Date of commission	data - date (dd/mm/yyyy)
J	Location certainty - accuracy of data	Select from pick list: domLocationCertainty
K	Name of main contractor who installed asset	data - text (30 Characters)
L	Date of 'survey-start'	data - date (dd/mm/yyyy)
M	Guideline revision used for survey	Select from pick list: domSurveyGuidelineID
N	Long Description - explanation, further details, or location within park	data - text (70 Characters)
O	Artwork - has it an aspect of creative, aesthetic, or decorative beauty?	Select from pick list: domArtWork
P	File name of photo. Photo must be supplied.	data - text (30 Characters)
Q	Construction Material - main substance from which the asset is manufactured	Select from pick list: domConstructionMaterial
R	Construction Material - secondary substance from which the asset is manufactured	Select from pick list: domConstructionMaterial
S	Moving Parts - describe whether the piece of equipment has moving componentry	Select from pick list: domHasMovingParts
T	Fall Height - highest point of designed standing/sitting/play use, measured in metres	data - decimal number (12 Chars, 1 Decimal)
U	Surface Finish - the outermost coating applied to the asset either for aesthetic, protective or both reasons.	Select from pick list: domSurfaceFinish
V	Part of Modular Structure - equipment is a component of a larger play structure?	Select from pick list :domPartofModularStructure
W	Number of Swings - the count of independently moving swings on the swing set.	data - number (12 Chars)
X	Number of Infant Seats - count of swings designed to cater for younger children, generally a more enclosed style seat that has a back and possibly a barrier in front.	data - number (12 Chars)
Y	Number of Disabled Seats - count of swings designed to cater for people in wheel chairs, generally by clamping the user's wheel chair into the tray of the swing.	data - number (12 Chars)
Z	Number of Standard Swing Seats - Records the count of swing seats that are able to be used by both able bodied children and adults.	data - number (12 Chars)
Additional Information		
*All other columns must be left "blank" or hold the value "LEAVE BLANK" as default in CAT See Appendix C.1.2 for a CAT example.		

A structure or sub-component of a structure, designed to cater for recreational needs through physical activity.

Centre of structure
X Y



As-Built requirements (PRK)

M05: Play Modular Unit

Name		Play Modular Unit (Point)	●
Point Type		M05 "Point Asset Inputs"	
Additional Information			
CAT Column	SAG Description	Valid Values	
A	Type of Point feature	M05	
B	Specify Modular Unit Type - the age category of children that the asset is designed to cater (e.g., Junior, Senior).	Select from pick list: domModularUnitType	
C	Existing or New Asset	Select from pick list: domExisitngOrNew	
D	Differs from design (yes/no)	Select from pick list: domDiffersFromDesign	
E	Unique identifier from drawing	data - text	
F	Centre of structure in Easting coordinate	data - decimal number	
G	Centre of structure in Northing coordinate	data - decimal number	
H	LEAVE BLANK	LEAVE BLANK	
I	Date of commission	data - date (dd/mm/yyyy)	
J	Location certainty - accuracy of data	Select from pick list: domLocationCertainty	
K	Name of main contractor who installed asset	data - text (30 Characters)	
L	Date of 'survey-start'	data - date (dd/mm/yyyy)	
M	Guideline revision used for survey	Select from pick list: domSurveyGuidelineID	
N	Long Description - explanation, further details, or location within park	data - text (70 Char)	
O	Artwork - has it an aspect of creative, aesthetic, or decorative beauty?	Select from pick list: domArtWork	
P	File name of photo. Photo must be supplied.	data - text (30 Characters)	
Additional Information			
*All other columns must be left "blank" or hold the value "LEAVE BLANK" as default in CAT See Appendix C.1.2 for a CAT example.			

A children's play structure, which incorporates a number of separate play equipment into one modular unit.

Centre of structure
X Y



The modular structure should be recorded as Play Modular Unit, and its individual components be recorded as Play Equipment, with the equipment being tagged as part of a modular structure.

As-Built requirements (PRK)

Name
Polygon Type

Boardwalk (Outline)

N01 "Polygon Asset Inputs "



A walkway that is elevated above the surrounding ground level.

**Outline of structure
X Y**

N01: Boardwalk

CAT Column	SAG Description	Valid Values
A	Type of polygon feature	N01
B	LEAVE BLANK	
C	Existing or New Asset	Select from pick list: domExistingOrNew
D	Differs from design (yes/no)	Select from pick list: domDiffersFromDesign
E	Unique identifier from drawing	data - text
F	Polygon Vertex Easting coordinate	data - decimal number
G	Polygon Vertex Northing coordinate	data - decimal number
H	Order of vertex/point along polygon	data - number
I	Date of commission	data - date (dd/mm/yyyy)
J	Location certainty - accuracy of data	Select from pick list: domLocationCertainty
K	Name of main contractor whom installed asset	data - text (30 Characters)
L	Date of 'survey-start'	data - date (dd/mm/yyyy)
M	Guideline revision used for survey	Select from pick list: domSurveyGuidelineID
N	Long Description - explanation, further details, or location within park	data - text (70 Characters)
O	Artwork - has it an aspect of creative or aesthetic beauty?	Select from pick list: domArtWork
P	File name of photo. Photo must be supplied.	data - text (30 Characters)
Q	Construction Material - main substance the asset is made of	Select from pick list: domConstructionMaterial
R	Non Slip Surface Type - material applied to the surface to increase friction	Select from pick list: domNonSlipSurfaceType
S	Handrail - does the ramp have a bar alongside that can be used by a person for support?	Select from pick list: domHandrail
T	Handrail Material - If a handrail is fitted what is it made of?	Select from pick list: domHandrailMaterial
U	Length - measured in metres	data - decimal number (12 Chars, 2 Decimals)
V	Width - measured in metres	data - decimal number (12 Chars, 2 Decimals)
W	Fall Height - measured in metres	data - decimal number (12 Chars, 1 Decimals)

Additional Information

*All other columns must be left "blank" or hold the value "LEAVE BLANK" as default in CAT
See Appendix C.1.2 for a CAT example.
Col G: enter number of vertex along outline

All corner points along outline to be surveyed.
Create one CAT row per surveyed point.



As-Built requirements (PRK)

Name
Polygon Type

Boat Ramp (Outline)
N02 "Polygon Asset Inputs "



Exists for the purpose of allowing boats and other watercraft to enter the water.

Outline of structure
X Y

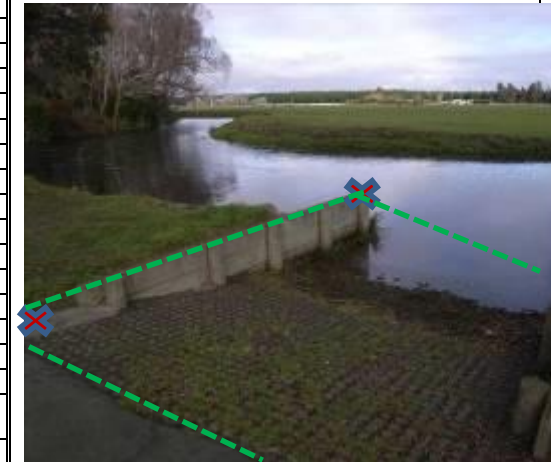
N02: Boat Ramp

CAT Column	SAG Description	Valid Values
A	Type of polygon feature	N02
B	Specific type of Boat Ramp	Select from pick list: domBoatRampType
C	Existing or New Asset	Select from pick list: domExisitngOrNew
D	Differs from design (yes/no)	Select from pick list: domDiffersFromDesign
E	Unique identifier from drawing	data - text
F	Polygon Vertex Easting coordinate	data - decimal number
G	Polygon Vertex Northing coordinate	data - decimal number
H	Order of vertex/point along polygon	data - number
I	Date of commission	data - date (dd/mm/yyyy)
J	Location certainty - accuracy of data	Select from pick list: domLocationCertainty
K	Name of main contractor whom installed asset	data - text (30 Characters)
L	Date of 'survey-start'	data - date (dd/mm/yyyy)
M	Guideline revision used for survey	Select from pick list: domSurveyGuidelineID
N	Long Description - explanation, further details, or location within park	data - text (70 Characters)
O	Artwork - has it an aspect of creative or aesthetic beauty?	Select from pick list: domArtWork
P	File name of photo. Photo must be supplied.	data - text (30 Characters)
Q	Construction Material - main substance the asset is made of	Select from pick list: domConstructionMaterial2
R	Fall Height - measured in metres	data - number (12 Chars, 1 Decimal)
S	Environmental Exposure - where does the lower end of the ramp rest?	Select from pick list: domEnvironmentalExposure
T	Length - measured in metres	data - decimal number (12 Chars, 2 Decimals)
U	Width - measured in metres	data - decimal number (12 Chars, 2 Decimals)
V	Safety Barrier - Is there a safety barrier installed?	Select from pick list domSafetyBarrier

Additional Information

*All other columns must be left "blank" or hold the value "LEAVE BLANK" as default in CAT
See Appendix C.1.2 for a CAT example.
Col G: enter number of vertex along outline

All corner points along outline to be surveyed.
Create one CAT row per surveyed point.



As-Built requirements (PRK)

Name
Polygon Type

Bridge (Outline)
N03 "Polygon Asset Inputs "



A structure spanning and providing passage over a gap or barrier.

Outline of structure
X Y

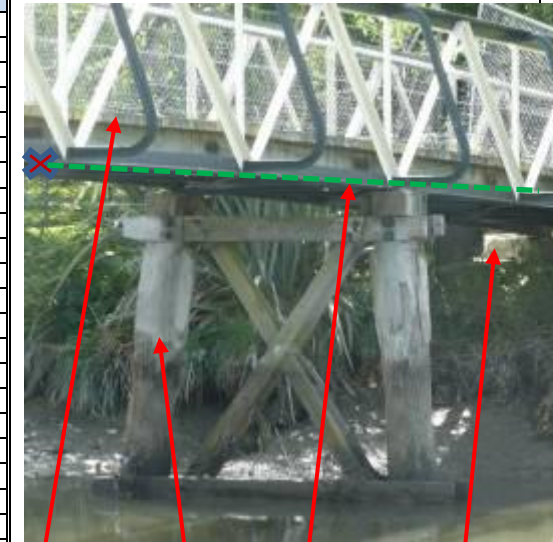
N03: Bridge

CAT Column	SAG Description	Valid Values
A	Type of polygon feature	N03
B	Specific type of bridge traffic	Select from pick list: domBridgeTrafficType
C	Existing or New Asset	Select from pick list: domExisitngOrNew
D	Differs from design (yes/no)	Select from pick list: domDiffersFromDesign
E	Unique identifier from drawing	data - text
F	Polygon Vertex Easting coordinate	data - decimal number
G	Polygon Vertex Northing coordinate	data - decimal number
H	Order of vertex/point along polygon	data - number
I	Date of commission	data - date (dd/mm/yyyy)
J	Location certainty - accuracy of data	Select from pick list: domLocationCertainty
K	Name of main contractor whom installed asset	data - text (30 Characters)
L	Date of 'survey-start'	data - date (dd/mm/yyyy)
M	Guideline revision used for survey	Select from pick list: domSurveyGuidelineID
N	Long Description - explanation, further details, or location within park	data - text (70 Characters)
O	Artwork - has it an aspect of creative or aesthetic beauty?	Select from pick list: domArtWork
P	File name of photo. Photo must be supplied.	data - text (30 Characters)
Q	Beam Construction Material -	Select from pick list: domBeamConstructionMaterial
R	Abutment Construction Material	Select from pick list: domAbutmentConstructMaterial
S	Support Construction Material	Select from pick list: domSupportConstructMaterial
T	Deck Wearing Surface	Select from pick list: domDeckWearingSurface
U	Number of Spans - spans = abutments + supports - 1	data - number
V	Design Loading	Select from pick list: domDesignLoading
W	Meets Accessibility Standard?	Select from pick list: domMeetsAccessibilityStandard
X	Length - measured in metres	data - decimal number (12 Chars, 2 Decimals)
Y	Width - measured in metres	data - decimal number (12 Chars, 2 Decimals)
Z	Fall Height - measured in metres	data - decimal number (12 Chars, 1 Decimal)
AA	Safety Barrier - Is there a safety barrier installed?	Select from pick list domSafetyBarrier
AB	Ownership - who the bridge belongs to	Select from pick list: domOwnership

Additional Information

*All other columns must be left "blank" or hold the value "LEAVE BLANK" as default in CAT
See Appendix C.1.2 for a CAT example.
Col G: enter number of vertex along outline

All corner points along outline to be surveyed.
Create one CAT row per surveyed point.



Deck Support Beam Abutment

This is a footbridge with concrete abutments, wooden supports, wooden beams and a wooden deck. Abutments are difficult to see in this photo.

As-Built requirements (PRK)

Name	Cattle Stop (Point)	●
Point Type	N04 "Point Asset Inputs"	

A grid of bars over a hole or hollow. A cattle stop will impede livestock while allowing vehicles to pass unhindered.

Centre of structure
X Y

N04: Cattle Stop

CAT Column	SAG Description	Valid Values
A	Type of point feature	N04
B	LEAVE BLANK	
C	Existing or New Asset	Select from pick list: domExisitngOrNew
D	Differs from design (yes/no)	Select from pick list: domDiffersFromDesign
E	Unique identifier from drawing	data - text
F	Centre of structure in Easting coordinate	data - decimal number
G	Centre of structure in Northing coordinate	data - decimal number
H	LEAVE BLANK	
I	Date of commission	data - date (dd/mm/yyyy)
J	Location certainty - accuracy of data	Select from pick list: domLocationCertainty
K	Name of main contractor whom installed asset	data - text (30 Characters)
L	Date of 'survey-start'	data - date (dd/mm/yyyy)
M	Guideline revision used for survey	Select from pick list: domSurveyGuidelineID
N	Long Description - explanation, further details, or location within park	data - text (70 Characters)
O	Artwork - has it an aspect of creative, aesthetic, or decorative beauty?	Select from pick list: domArtWork
P	File name of photo. Photo must be supplied.	data - text (30 Characters)
Q	Construction Material - main substance the asset is made of	Select from pick list: domConstructionMaterial2
R	Length - measured in metres	data - decimal number (12 Chars, 2 Decimals)
S	Width - measured in metres	data - decimal number (12 Chars, 2 Decimals)



Steel Cattle Stop.

Additional Information

*All other columns must be left "blank" or hold the value "LEAVE BLANK" as default in CAT
See Appendix C.1.2 for a CAT example.

As-Built requirements (PRK)

Name **Jetty (Outline)**
 Polygon Type **N05 "Polygon Asset Inputs"**



A structure extending over water used to secure and provide access to boats.

Outline of structure
X Y

N05: Jetty

CAT Column	SAG Description	Valid Values
A	Type of polygon feature	N05
B	Specific type of Jetty	Select from pick list: domJettyType
C	Existing or New Asset	Select from pick list: domExistingOrNew
D	Differs from design (yes/no)	Select from pick list: domDiffersFromDesign
E	Unique identifier from drawing	data - text
F	Polygon Vertex Easting coordinate	data - decimal number
G	Polygon Vertex Northing coordinate	data - decimal number
H	Order of vertex/point along polygon	data - number
I	Date of commission	data - date (dd/mm/yyyy)
J	Location certainty - accuracy of data	Select from pick list: domLocationCertainty
K	Name of main contractor whom installed asset	data - text (30 Characters)
L	Date of 'survey-start'	data - date (dd/mm/yyyy)
M	Guideline revision used for survey	Select from pick list: domSurveyGuidelineID
N	Long Description - explanation, further details, or location within park	data - text (70 Characters)
O	Artwork - has it an aspect of creative or aesthetic beauty?	Select from pick list: domArtWork
P	File name of photo. Photo must be supplied.	data - text (30 Characters)
Q	Construction Material - main substance the asset is made of	Select from pick list: domConstructionMaterial
R	Fall Height - measured in metres	data - decimal number (12 Chars, 1 Decimal)
S	Environmental Exposure - where does the lower end of the ramp rest?	Select from pick list: domEnvironmentalExposure
T	Design Loading	Select from pick list: domDesignLoading
U	Length - measured in metres	data - decimal number (12 Chars, 2 Decimals)
V	Width - measured in metres	data - decimal number (12 Chars, 2 Decimals)
W	Safety Barrier - Is there a safety barrier installed?	Select from pick list domSafetyBarrier
X	Steps? - Are there steps to the water or lower level?	Select from pick list domSteps
Y	Mooring/Launch? - Is there a mooring or launch component to the jetty?	Select from pick list domMooringLaunch



Additional Information

*All other columns must be left "blank" or hold the value "LEAVE BLANK" as default in CAT
 See Appendix C.1.2 for a CAT example.
 Col G: enter number of vertex along outline

All corner points along outline to be surveyed.
 Create one CAT row per surveyed point.

As-Built requirements (PRK)

Name
Line Type

Fence (Line)

N06 "Line Asset Inputs "



A structure constructed as an enclosure, barrier or boundary.

X Y

N06: Fence

CAT Column	SAG Description	Valid Values
A	Type of line feature	N06
B	Specific type of Fence	Select from pick list: domFenceType
C	Existing or New Asset	Select from pick list: domExisitngOrNew
D	Differs from design (yes/no)	Select from pick list: domDiffersFromDesign
E	Unique identifier from drawing	data - text
F	Line Vertex Easting coordinate	data - decimal number
G	Line Vertex Northing coordinate	data - decimal number
H	Order of vertex/point along line	data - number
I	Date of commission	data - date (dd/mm/yyyy)
J	Location certainty - accuracy of data	Select from pick list: domLocationCertainty
K	Name of main contractor whom installed asset	data - text (30 Characters)
L	Date of 'survey-start'	data - date (dd/mm/yyyy)
M	Guideline revision used for survey	Select from pick list: domSurveyGuidelineID
N	Long Description - explanation, further details, or location within park	data - text (70 Characters)
O	Artwork - has it an aspect of creative, aesthetic, or decorative beauty?	Select from pick list: domArtWork
P	File name of photo. Photo must be supplied.	data - text (30 Characters)
Q	Fence Function - purpose of fencing	Select from pick list: domFenceFunction
R	Fence Construction Material - main substance the asset is made of	Select from pick list: domFenceConstructionMaterial
S	Post Construction Material - main substance from which the supports which keep the fence up are made of.	Select from pick list: domPostConstructionMaterial
T	Surface Finish - outermost coating applied, aesthetic or protective	Select from pick list: domSurfaceFinish
U	Fence Location - boundary or internal?	Select from pick list: domFenceLocation
V	Electrified?	Select from pick list: domElectrified
W	Height - between the ground and top of fence in metres	data - decimal number (12 Chars, 2 Decimals)
X	Ownership - who the fence belongs to	Select from pick list: domOwnership



Paling fence.

Additional Information

*All other columns must be left "blank" or hold the value "LEAVE BLANK" as default in CAT
See Appendix C.1.2 for a CAT example.
Col G: enter number of vertex along line

As-Built requirements (PRK)

Name
Line Type

Retaining Wall (Line)

N07 "Line Asset Inputs "



A structure built to support a bank.

X Y

N07: Retaining Wall

CAT Column	SAG Description	Valid Values
A	Type of line feature	N07
B	LEAVE BLANK	
C	Existing or New Asset	Select from pick list: domExisitngOrNew
D	Differs from design (yes/no)	Select from pick list: domDiffersFromDesign
E	Unique identifier from drawing	data - text
F	Line Vertex Easting coordinate	data - decimal number
G	Line Vertex Northing coordinate	data - decimal number
H	Order of vertex/point along line	data - number
I	Date of commission	data - date (dd/mm/yyyy)
J	Location certainty - accuracy of data	Select from pick list: domLocationCertainty
K	Name of main contractor whom installed asset	data - text (30 Characters)
L	Date of 'survey-start'	data - date (dd/mm/yyyy)
M	Guideline revision used for survey	Select from pick list: domSurveyGuidelineID
N	Long Description - explanation, further details, or location within park	data - text (70 Characters)
O	Artwork - has it an aspect of creative, aesthetic, or decorative beauty?	Select from pick list: domArtWork
P	File name of photo. Photo must be supplied.	data - text (30 Characters)
Q	Construction Material - main substance the asset is made of	Select from pick list: domConstructionMaterial
R	Height - between the ground and top of retaining wall in metres	data - decimal number (12 Chars, 2 Decimals)
S	Thickness - distance from the exposed face to the buried face of the wall, measured in metres.	data - decimal number (12 Chars, 2 Decimals)
T	Fall Height - measured in metres	data - decimal number (12 Chars, 1 Decimal)
U	Safety Barrier - Is there a safety barrier installed?	Select from pick list domSafetyBarrier
V	Ownership - who the fence belongs to	Select from pick list: domOwnership

Additional Information

*All other columns must be left "blank" or hold the value "LEAVE BLANK" as default in CAT
See Appendix C.1.2 for a CAT example.
Col G: enter number of vertex along line



As-Built requirements (PRK)

N08: Safety Barrier

Name Line Type		Safety Barrier (Line) N08 "Line Asset Inputs "																																																																																					
<table border="1"> <thead> <tr> <th>CAT Column</th> <th>SAG Description</th> <th colspan="2">Valid Values</th> </tr> </thead> <tbody> <tr> <td>A</td> <td>Type of line feature</td> <td colspan="2">N08</td> </tr> <tr> <td>B</td> <td>Specific type of barrier type</td> <td colspan="2">Select from pick list: domBarrierType</td> </tr> <tr> <td>C</td> <td>Existing or New Asset</td> <td colspan="2">Select from pick list: domExisitngOrNew</td> </tr> <tr> <td>D</td> <td>Differs from design (yes/no)</td> <td colspan="2">Select from pick list: domDiffersFromDesign</td> </tr> <tr> <td>E</td> <td>Unique identifier from drawing</td> <td colspan="2">data - text</td> </tr> <tr> <td>F</td> <td>Line Vertex Easting coordinate</td> <td colspan="2">data - decimal number</td> </tr> <tr> <td>G</td> <td>Line Vertex Northing coordinate</td> <td colspan="2">data - decimal number</td> </tr> <tr> <td>H</td> <td>Order of vertex/point along line</td> <td colspan="2">data - number</td> </tr> <tr> <td>I</td> <td>Date of commission</td> <td colspan="2">data - date (dd/mm/yyyy)</td> </tr> <tr> <td>J</td> <td>Location certainty - accuracy of data</td> <td colspan="2">Select from pick list: domLocationCertainty</td> </tr> <tr> <td>K</td> <td>Name of main contractor whom installed asset</td> <td colspan="2">data - text (30 Characters)</td> </tr> <tr> <td>L</td> <td>Date of 'survey-start'</td> <td colspan="2">data - date (dd/mm/yyyy)</td> </tr> <tr> <td>M</td> <td>Guideline revision used for survey</td> <td colspan="2">Select from pick list: domSurveyGuidelineID</td> </tr> <tr> <td>N</td> <td>Long Description - explanation, further details, or location within park</td> <td colspan="2">data - text (70 Characters)</td> </tr> <tr> <td>O</td> <td>Artwork - has it an aspect of creative, aesthetic, or decorative beauty?</td> <td colspan="2">Select from pick list: domArtWork</td> </tr> <tr> <td>P</td> <td>File name of photo. Photo must be supplied.</td> <td colspan="2">data - text (30 Characters)</td> </tr> <tr> <td>Q</td> <td>Construction Material - main substance the asset is made of</td> <td colspan="2">Select from pick list: domConstructionMaterial</td> </tr> <tr> <td>R</td> <td>Height - between the ground and top of Safety Barrier in metres</td> <td colspan="2">data - decimal number (12 Chars, 2 Decimals)</td> </tr> <tr> <td>S</td> <td>Number of rails - count of horizontal rails in the safety barrier.</td> <td colspan="2">data - number (12 Char)</td> </tr> <tr> <td>T</td> <td>Fall Height - measured in metres</td> <td colspan="2">data - decimal number (12 Chars, 1 Decimal)</td> </tr> </tbody> </table>				CAT Column	SAG Description	Valid Values		A	Type of line feature	N08		B	Specific type of barrier type	Select from pick list: domBarrierType		C	Existing or New Asset	Select from pick list: domExisitngOrNew		D	Differs from design (yes/no)	Select from pick list: domDiffersFromDesign		E	Unique identifier from drawing	data - text		F	Line Vertex Easting coordinate	data - decimal number		G	Line Vertex Northing coordinate	data - decimal number		H	Order of vertex/point along line	data - number		I	Date of commission	data - date (dd/mm/yyyy)		J	Location certainty - accuracy of data	Select from pick list: domLocationCertainty		K	Name of main contractor whom installed asset	data - text (30 Characters)		L	Date of 'survey-start'	data - date (dd/mm/yyyy)		M	Guideline revision used for survey	Select from pick list: domSurveyGuidelineID		N	Long Description - explanation, further details, or location within park	data - text (70 Characters)		O	Artwork - has it an aspect of creative, aesthetic, or decorative beauty?	Select from pick list: domArtWork		P	File name of photo. Photo must be supplied.	data - text (30 Characters)		Q	Construction Material - main substance the asset is made of	Select from pick list: domConstructionMaterial		R	Height - between the ground and top of Safety Barrier in metres	data - decimal number (12 Chars, 2 Decimals)		S	Number of rails - count of horizontal rails in the safety barrier.	data - number (12 Char)		T	Fall Height - measured in metres	data - decimal number (12 Chars, 1 Decimal)	
CAT Column	SAG Description	Valid Values																																																																																					
A	Type of line feature	N08																																																																																					
B	Specific type of barrier type	Select from pick list: domBarrierType																																																																																					
C	Existing or New Asset	Select from pick list: domExisitngOrNew																																																																																					
D	Differs from design (yes/no)	Select from pick list: domDiffersFromDesign																																																																																					
E	Unique identifier from drawing	data - text																																																																																					
F	Line Vertex Easting coordinate	data - decimal number																																																																																					
G	Line Vertex Northing coordinate	data - decimal number																																																																																					
H	Order of vertex/point along line	data - number																																																																																					
I	Date of commission	data - date (dd/mm/yyyy)																																																																																					
J	Location certainty - accuracy of data	Select from pick list: domLocationCertainty																																																																																					
K	Name of main contractor whom installed asset	data - text (30 Characters)																																																																																					
L	Date of 'survey-start'	data - date (dd/mm/yyyy)																																																																																					
M	Guideline revision used for survey	Select from pick list: domSurveyGuidelineID																																																																																					
N	Long Description - explanation, further details, or location within park	data - text (70 Characters)																																																																																					
O	Artwork - has it an aspect of creative, aesthetic, or decorative beauty?	Select from pick list: domArtWork																																																																																					
P	File name of photo. Photo must be supplied.	data - text (30 Characters)																																																																																					
Q	Construction Material - main substance the asset is made of	Select from pick list: domConstructionMaterial																																																																																					
R	Height - between the ground and top of Safety Barrier in metres	data - decimal number (12 Chars, 2 Decimals)																																																																																					
S	Number of rails - count of horizontal rails in the safety barrier.	data - number (12 Char)																																																																																					
T	Fall Height - measured in metres	data - decimal number (12 Chars, 1 Decimal)																																																																																					
Additional Information																																																																																							
<p>*All other columns must be left "blank" or hold the value "LEAVE BLANK" as default in CAT See Appendix C.1.2 for a CAT example. Col G: enter number of vertex along line</p>																																																																																							



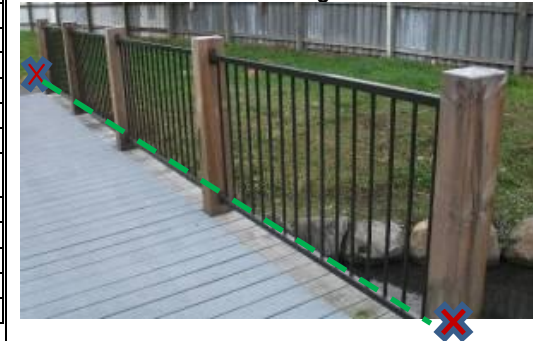
A structure built to support a bank.

X Y

W-Section Guard Rail



Guard Rail installed on a bridge



As-Built requirements (PRK)

Name	Shelter (Outline)
Polygon Type	N09 "Polygon Asset Inputs "



A structure constructed to give shelter from the elements.

**Outline of structure
X Y**

N09: Shelter

CAT Column	SAG Description	Valid Values
A	Type of polygon feature	N09
B	Specific type of Shelter	Select from pick list: domShelterType
C	Existing or New Asset	Select from pick list: domExisitngOrNew
D	Differs from design (yes/no)	Select from pick list: domDiffersFromDesign
E	Unique identifier from drawing	data - text
F	Polygon Vertex Easting coordinate	data - decimal number
G	Polygon Vertex Northing coordinate	data - decimal number
H	Order of vertex/point along polygon	data - number
I	Date of commission	data - date (dd/mm/yyyy)
J	Location certainty - accuracy of data	Select from pick list: domLocationCertainty
K	Name of main contractor whom installed asset	data - text (30 Characters)
L	Date of 'survey-start'	data - date (dd/mm/yyyy)
M	Guideline revision used for survey	Select from pick list: domSurveyGuidelineID
N	Long Description - explanation, further details, or location within park	data - text (70 Characters)
O	Artwork - has it an aspect of creative or aesthetic beauty?	Select from pick list: domArtWork
P	File name of photo. Photo must be supplied.	data - text (30 Characters)
Q	Construction Material - main substance the asset is made of	Select from pick list: domConstructionMaterial
R	Surface Finish - outermost coating applied, aesthetic or protective	Select from pick list: domSurfaceFinish



Sunshade






Pergola

Additional Information

*All other columns must be left "blank" or hold the value "LEAVE BLANK" as default in CAT
See Appendix C.1.2 for a CAT example.
Col G: enter number of vertex along outline

All corner points along outline to be surveyed.
Create one CAT row per surveyed point.

As-Built requirements (PRK)

N10: Stairs	Name	Stairs (Outline)		<p>A series of steps</p> <p style="text-align: center;">Outline of structure</p> <p style="text-align: center;">X Y</p> <p>In ground stairs with wooden stringers and gravel tread.</p>  <p>Concrete constructed stairs</p> 
	Polygon Type	N10 "Polygon Asset Inputs"		
	CAT Column	SAG Description	Valid Values	
	A	Type of polygon feature	N10	
	B	Specific type of Stairs	Select from pick list: domStairsType	
	C	Existing or New Asset	Select from pick list: domExisitngOrNew	
	D	Differs from design (yes/no)	Select from pick list: domDiffersFromDesign	
	E	Unique identifier from drawing	data - text	
	F	Polygon Vertex Easting coordinate	data - decimal number	
	G	Polygon Vertex Northing coordinate	data - decimal number	
H	Order of vertex/point along polygon	data - number		
I	Date of commission	data - date (dd/mm/yyyy)		
J	Location certainty - accuracy of data	Select from pick list: domLocationCertainty		
K	Name of main contractor whom installed asset	data - text (30 Characters)		
L	Date of 'survey-start'	data - date (dd/mm/yyyy)		
M	Guideline revision used for survey	Select from pick list: domSurveyGuidelineID		
N	Long Description - explanation, further details, or location within park	data - text (70 Characters)		
O	Artwork - has it an aspect of creative or aesthetic beauty?	Select from pick list: domArtWork		
P	File name of photo. Photo must be supplied.	data - text (30 Characters)		
Q	Stringer Construction Material - main substance the asset is made of.	Select from pick list: domStringerConstructMaterial		
R	Tread Construction Material - main substance the asset is made of.	Select from pick list: domTreadConstructMaterial		
S	Number of Steps - the riser count over the length of the stairs.	data - number (12 Chars)		
T	Fall Height - measured in metres	data - decimal number (12 Chars, 1 Decimal)		
U	Length - measured in metres	data - decimal number (12 Chars, 2 Decimals)		
V	Riser Height - average vertical distance between top and bottom of each step, measured in millimetres	data - number (4 Chars)		
W	Tread Length - horizontal distance between the front and the back of each step, measured in millimetres.	data - number (4 Chars)		
X	Safety Barrier - Is there a safety barrier installed?	Select from pick list domSafetyBarrier		
Y	Design Loading	Select from pick list: domDesignLoading		
Additional Information				
<p>*All other columns must be left "blank" or hold the value "LEAVE BLANK" as default in CAT See Appendix C.1.2 for a CAT example. Col G: enter number of vertex along outline</p> <div style="border: 2px solid red; padding: 5px; display: inline-block;"> All corner points along outline to be surveyed. Create one CAT row per surveyed point. </div>				

As-Built requirements (PRK)

Name		Stile (Point)	●
Point Type		N11 "Point Asset Inputs"	
CAT Column	SAG Description	Valid Values	
A	Type of point feature	N11	
B	Specific type of stile	Select from pick list: domStileType	
C	Existing or New Asset	Select from pick list: domExistingOrNew	
D	Differs from design (yes/no)	Select from pick list: domDiffersFromDesign	
E	Unique identifier from drawing	data - text	
F	Centre of structure in Easting coordinate	data - decimal number	
G	Centre of structure in Northing coordinate	data - decimal number	
H	LEAVE BLANK		
I	Date of commission	data - date (dd/mm/yyyy)	
J	Location certainty - accuracy of data	Select from pick list: domLocationCertainty	
K	Name of main contractor whom installed asset	data - text (30 Characters)	
L	Date of 'survey-start'	data - date (dd/mm/yyyy)	
M	Guideline revision used for survey	Select from pick list: domSurveyGuidelineID	
N	Long Description - explanation, further details, or location within park	data - text (70 Characters)	
O	Artwork - has it an aspect of creative, aesthetic, or decorative beauty?	Select from pick list: domArtWork	
P	File name of photo. Photo must be supplied.	data - text (30 Characters)	
Q	Construction Material - main substance the asset is made of	Select from pick list: domConstructionMaterial	
S	Ownership - who the stile belongs to	Select from pick list: domOwnership	
Additional Information			
*All other columns must be left "blank" or hold the value "LEAVE BLANK" as default in CAT See Appendix C.1.2 for a CAT example.			

N11: Stile

An arrangement of steps that allows people, but not animals, to climb over a fence without having to make contact with the fence.

Centre of structure
X Y

Cross-over stile



Walk-over stile



As-Built requirements (PRK)

Name
Polygon Type

Stockyard (Outline)
N12 "Polygon Asset Inputs "



Facility for gathering and holding animals.

Outline of structure
X Y

N12: Stockyard

CAT Column	SAG Description	Valid Values
A	Type of polygon feature	N12
B	Specific type of Stock	Select from pick list: domStockType
C	Existing or New Asset	Select from pick list: domExisitngOrNew
D	Differs from design (yes/no)	Select from pick list: domDiffersFromDesign
E	Unique identifier from drawing	data - text
F	Polygon Vertex Easting coordinate	data - decimal number
G	Polygon Vertex Northing coordinate	data - decimal number
H	Order of vertex/point along polygon	data - number
I	Date of commission	data - date (dd/mm/yyyy)
J	Location certainty - accuracy of data	Select from pick list: domLocationCertainty
K	Name of main contractor whom installed asset	data - text (30 Characters)
L	Date of 'survey-start'	data - date (dd/mm/yyyy)
M	Guideline revision used for survey	Select from pick list: domSurveyGuidelineID
N	Long Description - explanation, further details, or location within park	data - text (70 Characters)
O	Artwork - has it an aspect of creative or aesthetic beauty?	Select from pick list: domArtWork
P	File name of photo. Photo must be supplied.	data - text (30 Characters)
Q	Construction Material - main substance the asset is made of.	Select from pick list: domConstructionMaterial
R	Number of Holding Pens - count where animals can be held separately.	data - number (12 Chars)
S	Gate Type - style of movable barrier	Select from pick list: domGateType2



Additional Information

*All other columns must be left "blank" or hold the value "LEAVE BLANK" as default in CAT
See Appendix C.1.2 for a CAT example.
Col G: enter number of vertex along outline

All corner points along outline to be surveyed.
Create one CAT row per surveyed point.

As-Built requirements (PRK)

Name	Viewing Platform (Point)	
Point Type	N13 "Point Asset Inputs"	

A platform, often elevated, constructed to allow observation of the surrounding area.

Centre of structure
X Y

N13: Viewing Platform


CAT Column	SAG Description	Valid Values
A	Type of point feature	N13
B	LEAVE BLANK	
C	Existing or New Asset	Select from pick list: domExisitngOrNew
D	Differs from design (yes/no)	Select from pick list: domDiffersFromDesign
E	Unique identifier from drawing	data - text
F	Centre of structure in Easting coordinate	data - decimal number
G	Centre of structure in Northing coordinate	data - decimal number
H	LEAVE BLANK	
I	Date of commission	data - date (dd/mm/yyyy)
J	Location certainty - accuracy of data	Select from pick list: domLocationCertainty
K	Name of main contractor whom installed asset	data - text (30 Characters)
L	Date of 'survey-start'	data - date (dd/mm/yyyy)
M	Guideline revision used for survey	Select from pick list: domSurveyGuidelineID
N	Long Description - explanation, further details, or location within park	data - text (70 Characters)
O	Artwork - has it an aspect of creative, aesthetic, or decorative beauty?	Select from pick list: domArtWork
P	File name of photo. Photo must be supplied.	data - text (30 Characters)
Q	Construction Material - main substance the asset is made of	Select from pick list: domConstructionMaterial
R	Support Construction Material - What is holding up the platform, made of?	Select from pick list: domSupportConstructMaterial
S	Fall Height - measured in metres	data - decimal number (12 Chars, 1 Decimal)
T	Safety Barrier - Is there a safety barrier installed?	Select from pick list domSafetyBarrier
U	Design Loading	Select from pick list: domDesignLoading



Additional Information

*All other columns must be left "blank" or hold the value "LEAVE BLANK" as default in CAT
See Appendix C.1.2 for a CAT example.

As-Built requirements (PRK)

N14: Water Tower	Name	Water Tower (Point)			
	Point Type	N14 "Point Asset Inputs"			
	Additional Information				
	*All other columns must be left "blank" or hold the value "LEAVE BLANK" as default in CAT See Appendix C.1.2 for a CAT example.				
	CAT Column	SAG Description	Valid Values		
	A	Type of point feature	N14		
	B	LEAVE BLANK			
	C	Existing or New Asset	Select from pick list: domExisitngOrNew		
	D	Differs from design (yes/no)	Select from pick list: domDiffersFromDesign		
	E	Unique identifier from drawing	data - text		
F	Centre of structure in Easting coordinate	data - decimal number			
G	Centre of structure in Northing coordinate	data - decimal number			
H	LEAVE BLANK				
I	Date of commission	data - date (dd/mm/yyyy)			
J	Location certainty - accuracy of data	Select from pick list: domLocationCertainty			
K	Name of main contractor whom installed asset	data - text (30 Characters)			
L	Date of 'survey-start'	data - date (dd/mm/yyyy)			
M	Guideline revision used for survey	Select from pick list: domSurveyGuidelineID			
N	Long Description - explanation, further details, or location within park	data - text (70 Characters)			
O	Artwork - has it an aspect of creative or aesthetic beauty?	Select from pick list: domArtWork			
P	File name of photo. Photo must be supplied.	data - text (30 Characters)			
Q	Construction Material - main substance the asset is made of	Select from pick list: domConstructionMaterial			
R	Platform Height - measured in metres vertically from the ground to the platform.	data - decimal number (5 Chars, 2 Decimals)			
S	Area - space the tower occupies in the horizontal plane, measured in square metres.	data - decimal number (13 Chars, 2 Decimals)			

A structure constructed to support a water tank at an elevated height.

Centre of structure
X Y



Steel water tower

As-Built requirements (PRK)

N15: Water Trough

Name		Water Trough (Point)	●
Point Type		N15 "Point Asset Inputs"	
CAT Column	SAG Description	Valid Values	
A	Type of point feature	N15	
B	LEAVE BLANK		
C	Existing or New Asset	Select from pick list: domExisitngOrNew	
D	Differs from design (yes/no)	Select from pick list: domDiffersFromDesign	
E	Unique identifier from drawing	data - text	
F	Centre of structure in Easting coordinate	data - decimal number	
G	Centre of structure in Northing coordinate	data - decimal number	
H	LEAVE BLANK		
I	Date of commission	data - date (dd/mm/yyyy)	
J	Location certainty - accuracy of data	Select from pick list: domLocationCertainty	
K	Name of main contractor whom installed asset	data - text (30 Characters)	
L	Date of 'survey-start'	data - date (dd/mm/yyyy)	
M	Guideline revision used for survey	Select from pick list: domSurveyGuidelineID	
N	Long Description - explanation, further details, or location within park	data - text (70 Characters)	
O	Artwork - has it an aspect of creative or aesthetic beauty?	Select from pick list: domArtWork	
P	File name of photo. Photo must be supplied.	data - text (30 Characters)	
Q	Construction Material - main substance the asset is made of	Select from pick list: domConstructionMaterial	
R	Water Trough shape - form when viewed from above	Select from pick list: domWaterTroughShape	
S	Capacity - volume of water that can be stored, measured in litres	data - decimal number (12 Chars, 2 Decimals)	
T	Ballcock - device that maintains the water level within the trough?	Select from pick list: domBallcock	
Additional Information			
*All other columns must be left "blank" or hold the value "LEAVE BLANK" as default in CAT See Appendix C.1.2 for a CAT example.			

A structure constructed to support a water tank at an elevated height.

Centre of structure
X Y



Rectangular concrete water trough, no ballcock.



Circular plastic water trough. The white ball operates as a ballcock.

As-Built requirements (PRK)

Name	Sports Area (Polygon)
Polygon Type	O01 "Polygon Asset Inputs"



A permanent area set aside for casual or competitive recreation.

O01: Sports Area

CAT Column	SAG Description	Valid Values
A	Type of polygon feature	O01
B	Specific type of Sports Area	Select from pick list: domSportsAreaType
C	Existing or New Asset	Select from pick list: domExisitngOrNew
D	Differs from design (yes/no)	Select from pick list: domDiffersFromDesign
E	Unique identifier from drawing	data - text
F	Polygon Vertex Easting coordinate	data - decimal number
G	Polygon Vertex Northing coordinate	data - decimal number
H	Order of vertex / point along polygon	data - number
I	Date of commission	data - date (dd/mm/yyyy)
J	Location certainty - accuracy of data	Select from pick list: domLocationCertainty
K	Name of main contractor who installed asset	data - text (30 Characters)
L	Date of 'survey-start'	data - date (dd/mm/yyyy)
M	Guideline revision used for survey	Select from pick list: domSurveyGuidelineID
N	Long Description - explanation, further details, or location within park	data - text (70 Characters)
O	Artwork - has it an aspect of creative or aesthetic beauty?	Select from pick list: domArtWork
P	File name of photo. Photo must be supplied.	data - text (30 Characters)
Q	Sports Area Surface Material - substance of the playing area	Select from pick list: domSportsAreaSurfaceMaterial
R	Sports Level - intended player grade	Select from pick list: domSportsLevel
S	Sports Season - time of year the area is used	Select from pick list: domSportsSeason
T	Field Court Number - unique identifier if applicable	data - text (4 Characters)
U	Number of Wickets - If a Cricket Block, how many wickets are present?	data - number (2 Chars)
V	Base Course Material	Select from pick list: domBaseCourseMaterial
W	Ownership - Who the asset belongs to	Select from pick list: domOwnership

Outline of structure
X Y

Basketball half court



Additional Information

*All other columns must be left "blank" or hold the value "LEAVE BLANK" as default in CAT
See Appendix C.1.2 for a CAT example. Col G: enter number of vertex along outline.

All corner points along outline to be surveyed.
Create one CAT row per surveyed point.

As-Built requirements (PRK)

Name
Polygon Type

Sports Field (Polygon)

O02 "Polygon asset Inputs"

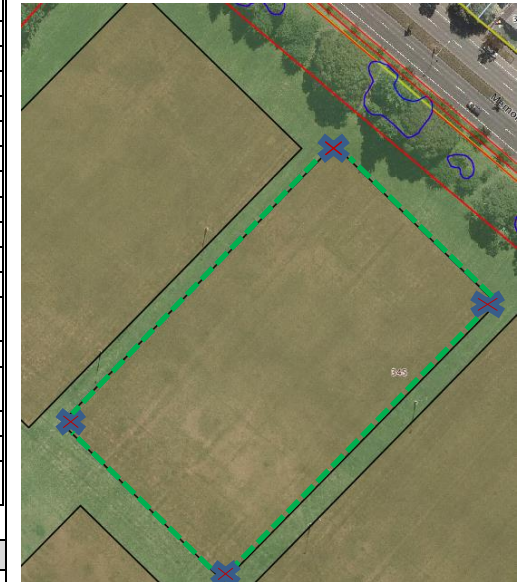


An outdoor playing area for various sports. Sports fields are formed by line markings on sports turf.

O02: Sports Field

CAT Column	SAG Description	Valid Values
A	Type of polygon feature	O02
B	Type of Sports Field Type - activity that are catered for	Select from pick list: domSportFieldType
C	Existing or New Asset	Select from pick list: domExisitngOrNew
D	Differs from design (yes/no)	Select from pick list: domDiffersFromDesign
E	Unique identifier from drawing	data - text
F	Polygon Vertex Easting coordinate	data - decimal number
G	Polygon Vertex Northing coordinate	data - decimal number
H	Order of vertex / point along polygon	data - number
I	Date of commission	data - date (dd/mm/yyyy)
J	Location certainty - accuracy of data	Select from pick list: domLocationCertainty
K	Name of main contractor who installed asset	data - text (30 Characters)
L	Date of 'survey-start'	data - date (dd/mm/yyyy)
M	Guideline revision used for survey	Select from pick list: domSurveyGuidelineID
N	Long Description - explanation, further details, or location within park	data - text (70 Characters)
O	Artwork - has it an aspect of creative, aesthetic, or decorative beauty?	Select from pick list: domArtWork
P	File name of photo. Photo must be supplied.	data - text (30 Characters)
Q	Sports Level - Where applicable state the level of play the area is used for.	Select from pick list: domSportsLevel
R	Sports Season - What season is this sports field used for?	Select from pick list: domSportsSeason
S	Field Court Number - unique identifier if applicable	data - text (4 Characters)
T	Sports Association - sports club or organisation that is associated with the field.	Data - text (30 chars)

Outline of structure
X Y



Additional Information

*All other columns must be left "blank" or hold the value "LEAVE BLANK" as default in CAT
See Appendix C.1.1.2 for a CAT example. Col G: enter number of vertex along outline.

All corner points along outline to be surveyed.
Create one CAT row per surveyed point.

As-Built requirements (PRK)

003: Sports Equipment

Name	Sports Equipment (Point)
Point Type	003 "Point Asset Inputs"



Assets installed to allow sports to be played or practised.

Centre of structure
X Y

CAT Column	SAG Description	Valid Values
A	Type of Point feature	003
B	Type of Sports Equipment	Select from pick list: domSportEquipmentType
C	Existing or New Asset	Select from pick list: domExisitngOrNew
D	Differs from design (yes/no)	Select from pick list: domDiffersFromDesign
E	Unique identifier from drawing	data - text
F	Centre of structure in Easting coordinate	data - decimal number
G	Centre of structure in Northing coordinate	data - decimal number
H	LEAVE BLANK	LEAVE BLANK
I	Date of commission	data - date (dd/mm/yyyy)
J	Location certainty - accuracy of data	Select from pick list: domLocationCertainty
K	Name of main contractor who installed asset	data - text (30 Characters)
L	Date of 'survey-start'	data - date (dd/mm/yyyy)
M	Guideline revision used for survey	Select from pick list: domSurveyGuidelineID
N	Long Description - explanation, further details, or location within park	data - text (70 Characters)
O	Artwork - has it an aspect of creative or aesthetic beauty?	Select from pick list: domArtWork
P	File name of photo. Photo must be supplied.	data - text (30 Characters)
Q	Construction Material	Select from pick list: domConstructionMaterial2
R	Surface Finish	Select from pick list: domSurfaceFinish
S	Fall Height - highest point of designed standing/sitting/play use, measured in metres	data - decimal number (12 Chars, 1 Decimal)
T	Ownership - Who the asset belongs to	Select from pick list: domOwnership



Tennis Net

Additional Information

*All other columns must be left "blank" or hold the value "LEAVE BLANK" as default in CAT
See Appendix C.1.2 for a CAT example.

As-Built requirements (PRK)

P01: Parks Tank

Name		Parks Tank (Point)	●
Point Type		P01 "Point Asset Inputs"	
CAT Column	SAG Description	Valid Values	
A	Type of point feature	P01	
B	Specific use for the Tank	Select from pick list: domTankUse	
C	Existing or New Asset	Select from pick list: domExistingOrNew	
D	Differs from design (yes/no)	Select from pick list: domDiffersFromDesign	
E	Unique identifier from drawing	data - text	
F	Centre of structure in Easting coordinate	data - decimal number	
G	Centre of structure in Northing coordinate	data - decimal number	
H	LEAVE BLANK		
I	Date of commission	data - date (dd/mm/yyyy)	
J	Location certainty - accuracy of data	Select from pick list: domLocationCertainty	
K	Name of main contractor whom installed asset	data - text (30 Characters)	
L	Date of 'survey-start'	data - date (dd/mm/yyyy)	
M	Guideline revision used for survey	Select from pick list: domSurveyGuidelineID	
N	Long Description - explanation, further details, or location within park	data - text (70 Characters)	
O	Artwork - has it an aspect of creative or aesthetic beauty?	Select from pick list: domArtWork	
P	File name of photo. Photo must be supplied.	data - text (30 Characters)	
Q	Construction Material - main substance the asset is made of	Select from pick list: domConstructionMaterial	
R	Tank Contents - type of fluid or gas in the tank	Select from pick list: domTankContents	
S	Capacity - volume of liquid, tank is capable of holding, measured in litres.	data - number (12 Chars)	
T	Re-locatable? - can be removed from the site, in such a manner that it is in a serviceable condition for use at another site.	Select from pick list: domRelocatable	
U	Construction style - technique that has been used to assemble or build the tank	Select from pick list: domConstructionStyle	
V	Ground Feature Type - describe where the tank is in relation to the ground.	Select from pick list: domGroundFeatureType	

Additional Information
 *All other columns must be left "blank" or hold the value "LEAVE BLANK" as default in CAT
 See Appendix C.1.2 for a CAT example.

An enclosed container for storing liquids. Some tanks may incorporate treatment (e.g. septic tanks). Ensure only tanks owned and used for the park are captured. Do not capture assets that are part of the council's waste water, or water supply network. Ponds constructed to hold water for livestock or firefighting are also considered tanks.

**Centre of structure
X Y**



Plastic/Polyethylene water tank.



Buried Septic tank. Vent and access exposed.

As-Built requirements (PRK)

Name	Parks Pump (Point)	
Point Type	P02 "Point Asset Inputs"	
CAT Column	SAG Description	Valid Values
A	Type of point feature	P02
B	Specific type of Pump	Select from pick list: domPumpType
C	Existing or New Asset	Select from pick list: domExistingOrNew
D	Differs from design (yes/no)	Select from pick list: domDiffersFromDesign
E	Unique identifier from drawing	data - text
F	Centre of structure in Easting coordinate	data - decimal number
G	Centre of structure in Northing coordinate	data - decimal number
H	LEAVE BLANK	
I	Date of commission	data - date (dd/mm/yyyy)
J	Location certainty - accuracy of data	Select from pick list: domLocationCertainty
K	Name of main contractor whom installed asset	data - text (30 Characters)
L	Date of 'survey-start'	data - date (dd/mm/yyyy)
M	Guideline revision used for survey	Select from pick list: domSurveyGuidelineID
N	Long Description - explanation, further details, or location within park	data - text (70 Characters)
O	Artwork - has it an aspect of creative or aesthetic beauty?	Select from pick list: domArtWork
P	File name of photo. Photo must be supplied.	data - text (30 Characters)
Q	Service - What fluid does the pump transfer?	Select from pick list: domService
R	Pump Function - Where in the network is the pump?	Select from pick list: domPumpFunction
S	Pump Purpose - What has the pump been installed for?	Select from pick list: domPumpPurpose
T	Usage Class - Primary or Standby?	Select from pick list: domUsageClass
U	Pump Source - Where does the pump suck from?	Select from pick list: domPumpSource
V	Vertical Multistage - Is the pump a vertical multistage?	Select from pick list: domVerticalMultistage
W	Submersible - Is the pump submersible?	Select from pick list: domSubmersible
X	Impeller Diameter, measured in millimetres	data - number (4 Chars)
Y	Impeller Model Number - What is the Impeller Model Number?	data - text (30 Characters)
Z	Pulley Diameter, measured in millimetres	data - number (6 Chars)
AA	Discharge Diameter, measured in millimetres	data - number (4 Chars)
AB	kVA Rating	data - decimal number (6 Chars, 2 Decimals)
AC	Maximum Lift - measured in metres	data - decimal number (5 Chars, 2 Decimals)
AD	Manufacturer - Pump Manufacturer (e.g. Grundfos)	Data - text (30 Characters)
AE	Model - Model of pump (e.g. N Series)	Data - text (20 Characters)
AF	Model Number - Model number of pump (e.g. N12134)	Data - text (24 Characters)
AG	Serial Number - Serial Number of pump (e.g. ABC123)	Data - text (24 Characters)
Additional Information		
*All other columns must be left "blank" or hold the value "LEAVE BLANK" as default in CAT See Appendix C.1.2 for a CAT example.		

P02: Parks Pump



A device designed to move fluids through mechanical action.

Centre of structure
X Y



Hand pump installed in a park. This pump has an artwork component.



Pump and motor on irrigation system. Ensure only pumps owned and used for the park are captured. Do not capture assets that are part of the council's waste water, or water supply network.

As-Built requirements (PRK)

P03: Irrigation System	Name	Irrigation System (Point)	●	A device used to control the watering of a green asset.	
	Point Type	P03 "Point Asset Inputs"			
	CAT Column	SAG Description	Valid Values		
	A	Type of point feature	P03		
	B	Irrigation System Type - What is the green asset the system is designed to water?	Select from pick list: domIrrigationSystemType		
	C	Existing or New Asset	Select from pick list: domExistingOrNew		
	D	Differs from design (yes/no)	Select from pick list: domDiffersFromDesign		
	E	Unique identifier from drawing	data - text		
	F	Centre of structure in Easting coordinate	data - decimal number		
	G	Centre of structure in Northing coordinate	data - decimal number		
	H	LEAVE BLANK			
	I	Date of commission	data - date (dd/mm/yyyy)		
	J	Location certainty - accuracy of data	Select from pick list: domLocationCertainty		
	K	Name of main contractor whom installed asset	data - text (30 Characters)		
L	Date of 'survey-start'	data - date (dd/mm/yyyy)			
M	Guideline revision used for survey	Select from pick list: domSurveyGuidelineID			
N	Long Description - explanation, further details, or location within park	data - text (70 Characters)			
O	Artwork - has it an aspect of creative or aesthetic beauty?	Select from pick list: domArtWork			
P	File name of photo. Photo must be supplied.	data - text (30 Characters)			
Q	Supply Type - water source the system utilises	Select from pick list: domSupplyType			
R	Controller - type of mechanism used to manage when and how green assets are hydrated?	Select from pick list: domIrrigationController			
S	Controller Subtype - subtype of mechanism used to manage when and how green assets are hydrated?	Select from pick list: domIrrigationControlSubtype			
T	Drip System - does the asset include a drip system?	Select from pick list: domDripSystem			
U	Popup System - does the asset includes a pop up system?	Select from pick list: domPopUpSystem			
V	Number of sprinklers - quantity of sprinkler heads fitted to system.	data - number (6 Chars)			
Additional Information					
*All other columns must be left "blank" or hold the value "LEAVE BLANK" as default in CAT See Appendix C.1.2 for a CAT example.					

Centre of structure
X Y



Irrinet system in wall cabinet.

Only the irrigation system controllers are to be captured. Sprinkler heads are included in the classification of the controller boxes and should not be captured separately

As-Built requirements (PRK)

P04: Parks Backflow Preventer

Name		Parks Backflow Preventer (Point)	●
Point Type		P04 "Point Asset Inputs"	
CAT Column			
SAG Description	Valid Values		
A	Type of point feature	P04	
B	Backflow T ype -describe the break and preventer used for this asset.	Select from pick list: domBackflowType	
C	Existing or New Asset	Select from pick list: domExistngOrNew	
D	Differs from design (yes/no)	Select from pick list: domDiffersFromDesign	
E	Unique identifier from drawing	data - text	
F	Centre of structure in Easting coordinate	data - decimal number	
G	Centre of structure in Northing coordinate	data - decimal number	
H	LEAVE BLANK		
I	Date of commission	data - date (dd/mm/yyyy)	
J	Location certainty - accuracy of data	Select from pick list: domLocationCertainty	
K	Name of main contractor whom installed asset	data - text (30 Characters)	
L	Date of 'survey-start'	data - date (dd/mm/yyyy)	
M	Guideline revision used for survey	Select from pick list: domSurveyGuidelineID	
N	Long Description - explanation, further details, or location within park	data - text (70 Characters)	
O	Artwork - has it an aspect of creative or aesthetic beauty?	Select from pick list: domArtWork	
P	File name of photo. Photo must be supplied.	data - text (30 Characters)	
Q	Backflow Internal Diameter - measured in millimetres, this is often recorded on the device.	data - number (6 Chars)	
R	IQP Number	data - text (30 Characters)	
S	Tester - Who tested the device?	data - text (30 Characters)	
T	Manufacturer - Backflow preventer manufacturer (e.g. Wilkins)	Data - text (30 Characters)	
U	Model - Model of Backflow preventer (e.g.RP)	Data - text (20 Characters)	
V	Model Number - Model number of Backflow preventer (e.g. 375RP)	Data - text (24 Characters)	
W	Serial Number - Serial Number of Backflow preventer (e.g. ABC123)	Data - text (24 Characters)	
Additional Information			
*All other columns must be left "blank" or hold the value "LEAVE BLANK" as default in CAT See Appendix C.1.2 for a CAT example.			

A device to stop the return flow of a liquid (usually water) to the pipe network from which it came.

Centre of structure
X Y



Small diameter (15-50mm) RPZ (reduced pressure backflow preventer)



Small diameter (15-50mm) double check valve

As-Built requirements (PRK)

P05: Parks Cable

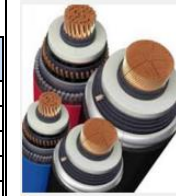
Name	Parks Cable (Line)
Line Type	P05 "Line Asset Inputs "



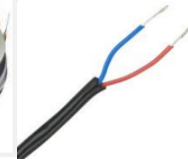
Cables are formed by a conductor surrounded by a shield.

X Y

Power Cables



Signal Cable



CAT Column	SAG Description	Valid Values
A	Type of line feature	P05
B	Leave Blank	
C	Existing or New Asset	Select from pick list: domExisitngOrNew
D	Differs from design (yes/no)	Select from pick list: domDiffersFromDesign
E	Unique identifier from drawing	data - text (30 chars)
F	Line Vertex Easting coordinate	data - decimal number
G	Line Vertex Northing coordinate	data - decimal number
H	Order of vertex/point along line	data - number
I	Date of commission	data - date (dd/mm/yyyy)
J	Location certainty - accuracy of data	Select from pick list: domLocationCertainty
K	Name of main contractor whom installed asset	data - text (30 Characters)
L	Date of 'survey-start'	data - date (dd/mm/yyyy)
M	Guideline revision used for survey	Select from pick list: domSurveyGuidelineID
N	Long Description - explanation, further details, or location within park	data - text (70 Characters)
O	Artwork - has it an aspect of creative, aesthetic, or decorative beauty?	Select from pick list: domArtWork
P	File name of photo. Photo must be supplied.	data - text (30 Characters)
Q	Cable Purpose (Power, Fibre, Communications, Control)	Select from pick list: domCablePurpose
R	Cable length in metres (m).	data - decimal number (15 Chars, 4 Decimals)
S	Spec Sheet - Provide data sheet / drawing name that provides more information about cables.	data - text (30 Characters)

Additional Information

*All other columns must be left "blank" or hold the value "LEAVE BLANK" as default in CAT
 See Appendix C.1.2 for a CAT example.
 Col G: enter number of vertex along line



As-Built requirements (PRK)

P06: Parks Electrical System	Name	Parks Electrical System (Point)	Electrical assets distribute electrical power. Centre of structure X Y	
	Equipment Type	P06 "Point Asset Inputs"		
	Additional Information			
	CAT Column	SAG Description		Valid Values
	A	Type of point feature		P06
	B	Electrical system type		Select from pick list: domElectricalSystemType
	C	Existing or New Asset		Select from pick list: domExistingOrNew
	D	Differs from design (Yes/No)		Select from pick list: domDiffersFromDesign
	E	Unique identifier from drawing		data - text (30 chars)
	F	Centre of structure in Easting coordinate		data - decimal number
G	Centre of structure in Northing coordinate	data - decimal number		
H	LEAVE BLANK	data - number		
I	Date of commission	data - date (dd/mm/yyyy)		
J	Location certainty - accuracy of data	Select from pick list: domLocationCertainty		
K	Name of main contractor whom installed asset	data - text (30 Characters)		
L	Date of 'survey-start'	data - date (dd/mm/yyyy)		
M	Guideline revision used for survey	Select from pick list: domSurveyGuidelineID		
N	Long Description - explanation, further details, or location within park	data - text (70 Characters)		
O	Artwork - has it an aspect of creative or aesthetic beauty?	Select from pick list: domArtWork		
P	File name of photo. Photo must be supplied.	data - text (30 Characters)		
Q	Spec Sheet - File name of data sheet.	data - text (30 chars)		
R	Inside Cabinet? Yes/No	Select from pick list : domInsideCabinet		
S	Construction Material	Select from pick list : domConstructionMaterial		
T	Main Switch Amps in Ampere (A).	data - number (6 chars, 2 decimal places)		
U	Incoming Rate Current in Ampere (A).	data - number (6 chars, 2 decimal places)		
V	Installation date of the asset	date - dd/mm/yyyy		
W	Warranty Start Date of the asset	date - dd/mm/yyyy		
X	Warranty End Date of the asset	date - dd/mm/yyyy		
Y	Height in millimetres (mm).	data - number (10 chars)		
Z	Length in millimetres (mm).	data - number (10 chars)		
AA	Depth data in millimetres (mm).	data - number (10 chars)		
AB	External Coating Type Finish	data - text (30 chars)		
AC	Thickness in millimetres (mm).	data - number (6 chars, 1 decimal place)		
AD	Ingress Protection	data - text (3 chars)		
AE	Form of Separation	data - text (2 chars)		
AF	Type Tested (Yes, No, Partial)	Select from pick list : domTypeTested		
AG	Fault Rating in kA	data - number (10 chars, 2 decimal place)		
Additional Information				
*All other columns must be left "blank" or hold the value "LEAVE BLANK" as default in CAT See Appendix C.1.2 for a CAT example.				