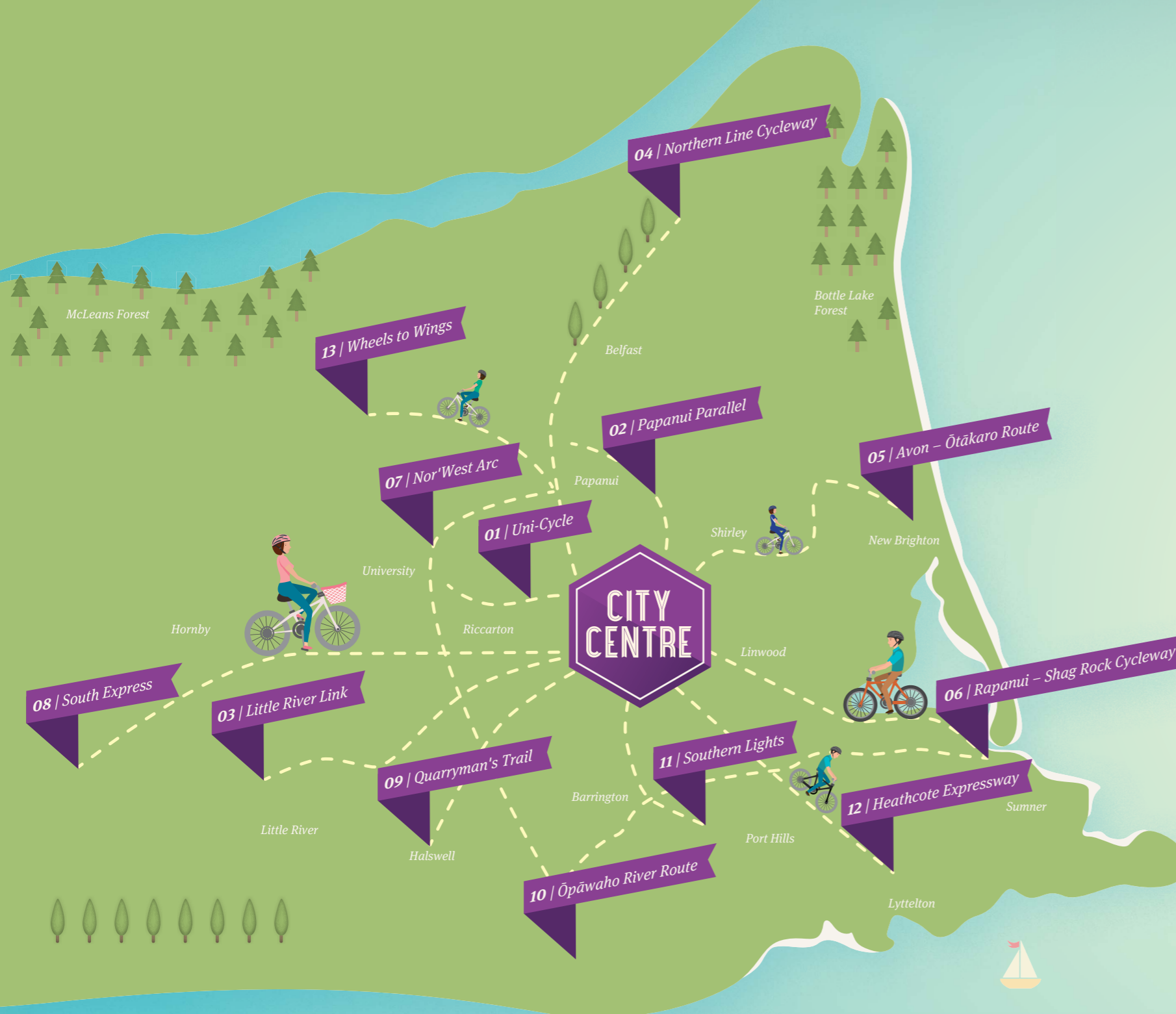


WE'RE ON OUR WAY

13 new cycleways

Christchurch Major Cycleways network



- 01** Uni-Cycle (Puari ki Pū-taringa-motu)
Canterbury University and College of Education to the Central City.
- 02** Papanui Parallel (Puari ki Papanui)
Northlands and the Northern Line Cycleway to the Central City.
- 03** Little River Link (Puari ki Wairewa)
Connecting the city to the Christchurch Little River Rail Trail.
- 04** Northern Line Cycleway (Puari ki Pū-harakeke-nui)
Extending the northern and southern sections of the off-road rail pathway from Belfast to South Hagley Park and the Central City
- 05** Avon – Ōtākaro Route (Puari ki Te Karoro)
New Brighton to the Central City via the Avon River corridor.
- 06** Rapanui – Shag Rock Cycleway (Puari ki Rapanui)
Central City to Ferrymead Bridge link to the Christchurch Coastal Pathway into Sumner.
- 07** Nor'West Arc (Te Ara O-Rakipaoa)
From Hoon Hay through Middleton, Upper Riccarton, Bryndwyr, and Papanui.
- 08** South Express (Puari ki Niho-toto)
Connects Templeton, Hornby, Middleton, and Riccarton to the Central City.
- 09** Quarryman's Trail (Puari ki Otūmatua)
Connects Halswell, Hoon Hay and Somerfield to the South to City Route.
- 10** Ōpāwaho River Route (Ōpāwaho ki Ihutai)
Follows Heathcote River from Princess Margaret Hospital to the estuary at Ferrymead, connecting with the Christchurch Coastal Pathway.
- 11** Southern Lights (Puari ki Waimōkihi)
Connects southern suburbs around Beckenham to the Central City.
- 12** Heathcote Expressway (Puari ki Kahukura)
From Heathcote through Woolston, Opawa, Waltham and Sydenham into the City Centre.
- 13** Wheels to Wings (Papanui ki Waiwhetū)
From Papanui at the junction of both the Northern Line Cycleway and the Nor' West Arc to the airport and its wider employment and business areas.

Note: The final decision on names was made by the Council after a public competition and vote.

All Major Cycleways Routes have bilingual name options provided by Ngāi Tahu. The names follow the same structure, i.e. Puari ki Pū-taringa-motu (City to Riccarton) and many reference landmarks, such as Otūmatua, a peak on the Port Hills.