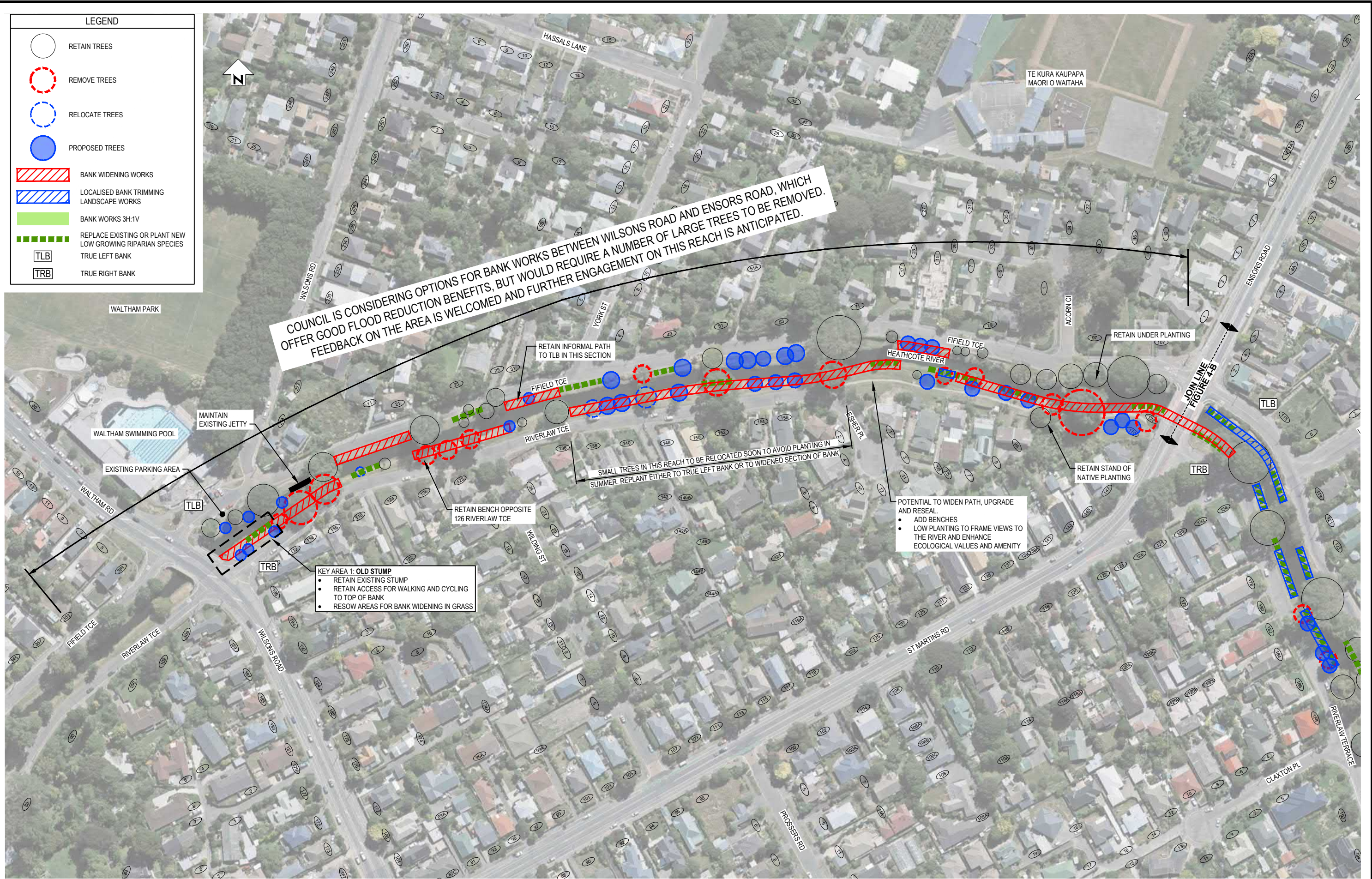


**HEATHCOTE DREDGING
STAGES 3 AND 4**



LEGEND	
	RETAIN TREES
	REMOVE TREES
	RELOCATE TREES
	PROPOSED TREES
	BANK WIDENING WORKS
	LOCALISED BANK TRIMMING LANDSCAPE WORKS
	BANK WORKS 3H-1V
	REPLACE EXISTING OR PLANT NEW LOW GROWING RIPARIAN SPECIES
	TRUE LEFT BANK
	TRUE RIGHT BANK



**HEATHCOTE
DREDGING STAGE 4**

0 10 20 30 40 50m
SCALE 1:1000 (A1 SHT SIZE)

0 50 100m
SCALE 1:2000 (A3 SHT SIZE)

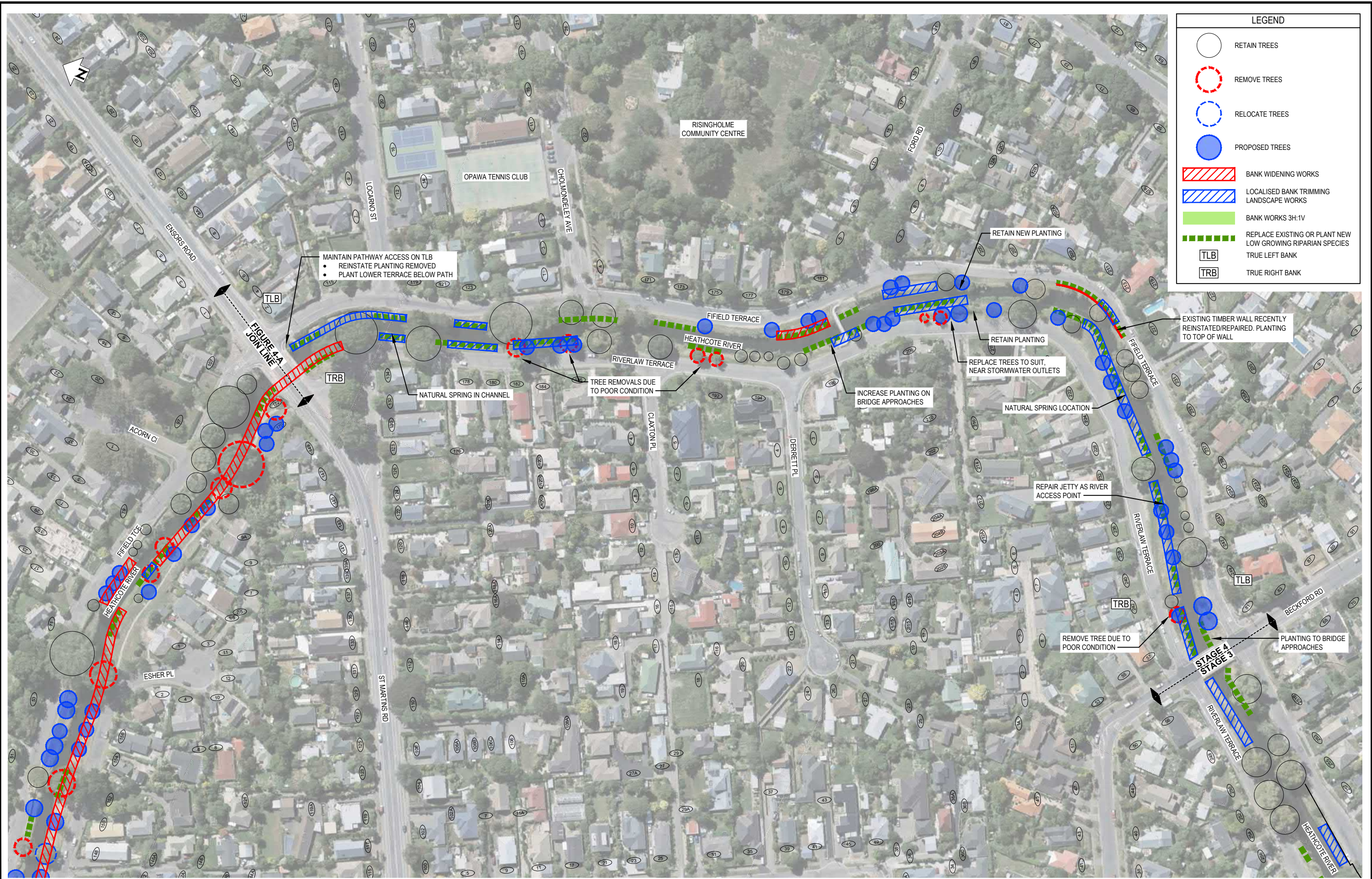


Job No: 31010275

**CONCEPT PLANS FOR PUBLIC COMMENTS
WILSONS ROAD TO ENSORS ROAD**

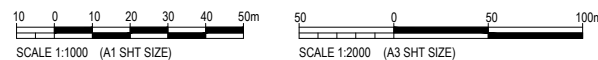
Drawn By: BCJ
Scale: AS SHOWN

FIG: 4-A



LEGEND	
	RETAIN TREES
	REMOVE TREES
	RELOCATE TREES
	PROPOSED TREES
	BANK WIDENING WORKS
	LOCALISED BANK TRIMMING LANDSCAPE WORKS
	BANK WORKS 3H:1V
	REPLACE EXISTING OR PLANT NEW LOW GROWING RIPARIAN SPECIES
	TRUE LEFT BANK
	TRUE RIGHT BANK

**HEATHCOTE
DREDGING STAGE 4**

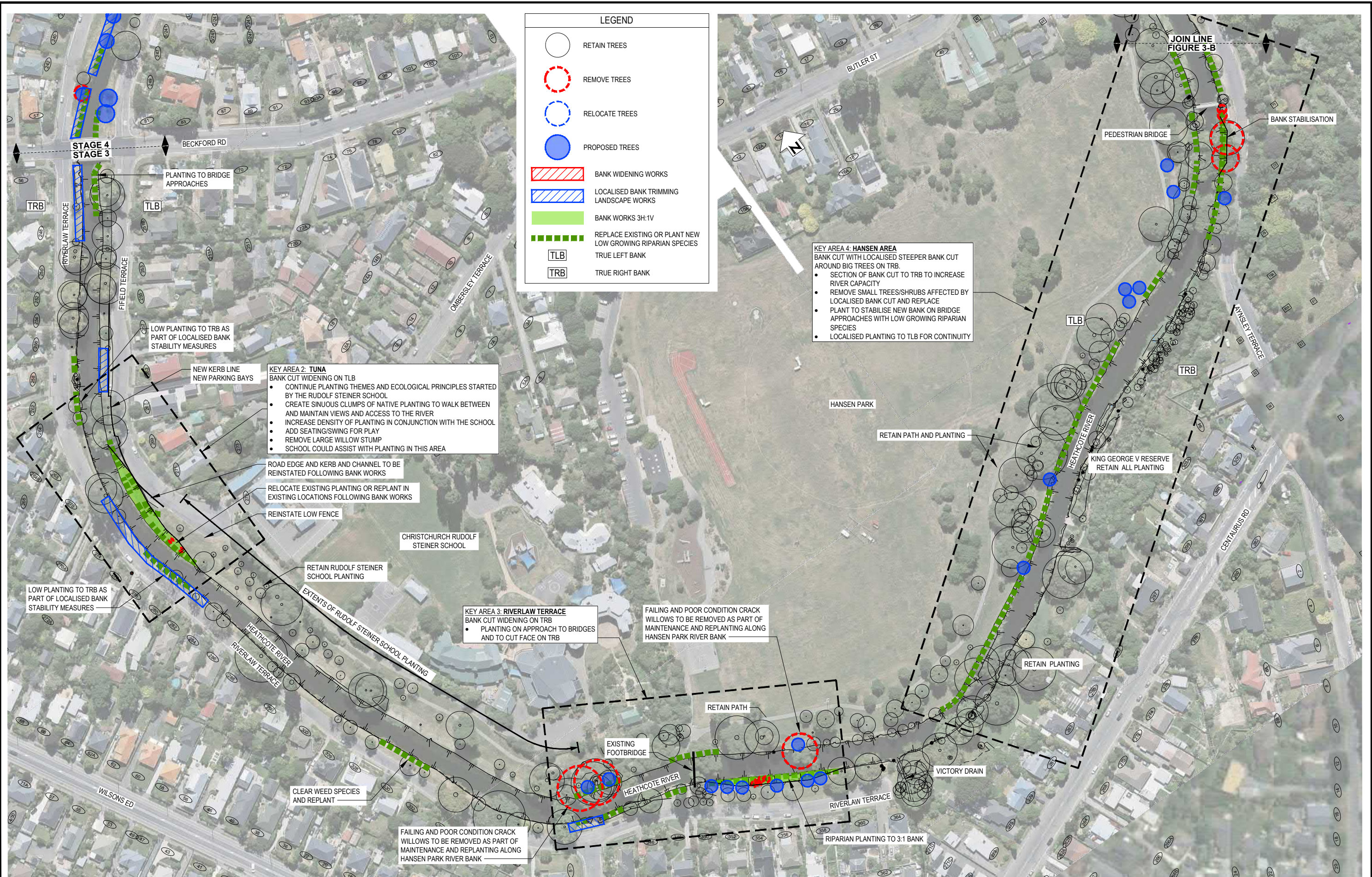


**CONCEPT PLANS FOR PUBLIC COMMENTS
ENSORS ROAD TO BECKFORD ROAD**

Job No: 31010275

Drawn By: BCJ
Scale: AS SHOWN

FIG: 4-B



HEATHCOTE
DREDGING STAGE 3

0 10 20 30 40 50m
SCALE 1:1000 (A1 SHT SIZE)

0 50 100m
SCALE 1:2000 (A3 SHT SIZE)

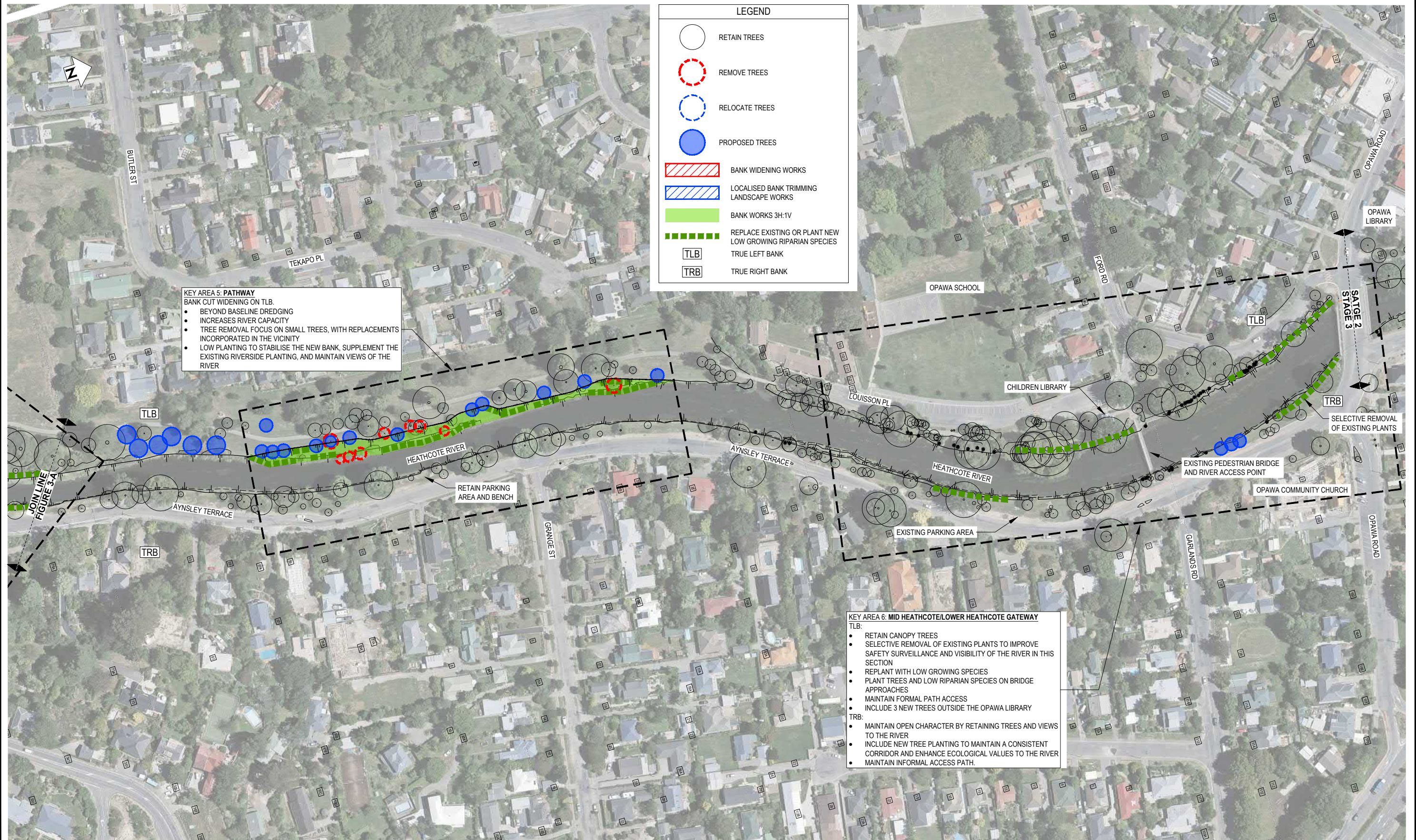


Job No: 310101275

CONCEPT PLANS FOR PUBLIC COMMENTS
BECKFORD ROAD TO HANSEN PARK

Drawn By: BCJ
Scale: AS SHOWN

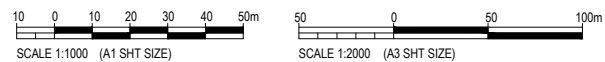
FIG: 3-A



KEY AREA 5: PATHWAY
 BANK CUT WIDENING ON TLB.
 • BEYOND BASELINE DREDGING
 • INCREASES RIVER CAPACITY
 • TREE REMOVAL FOCUS ON SMALL TREES, WITH REPLACEMENTS INCORPORATED IN THE VICINITY
 • LOW PLANTING TO STABILISE THE NEW BANK, SUPPLEMENT THE EXISTING RIVERSIDE PLANTING, AND MAINTAIN VIEWS OF THE RIVER

KEY AREA 6: MID HEATHCOTE/LOWER HEATHCOTE GATEWAY
 TLB:
 • RETAIN CANOPY TREES
 • SELECTIVE REMOVAL OF EXISTING PLANTS TO IMPROVE SAFETY SURVEILLANCE AND VISIBILITY OF THE RIVER IN THIS SECTION
 • REPLANT WITH LOW GROWING SPECIES
 • PLANT TREES AND LOW RIPARIAN SPECIES ON BRIDGE APPROACHES
 • MAINTAIN FORMAL PATH ACCESS
 • INCLUDE 3 NEW TREES OUTSIDE THE OPAWA LIBRARY
 TRB:
 • MAINTAIN OPEN CHARACTER BY RETAINING TREES AND VIEWS TO THE RIVER
 • INCLUDE NEW TREE PLANTING TO MAINTAIN A CONSISTENT CORRIDOR AND ENHANCE ECOLOGICAL VALUES TO THE RIVER
 • MAINTAIN INFORMAL ACCESS PATH.

**HEATHCOTE
 DREDGING STAGE 3**



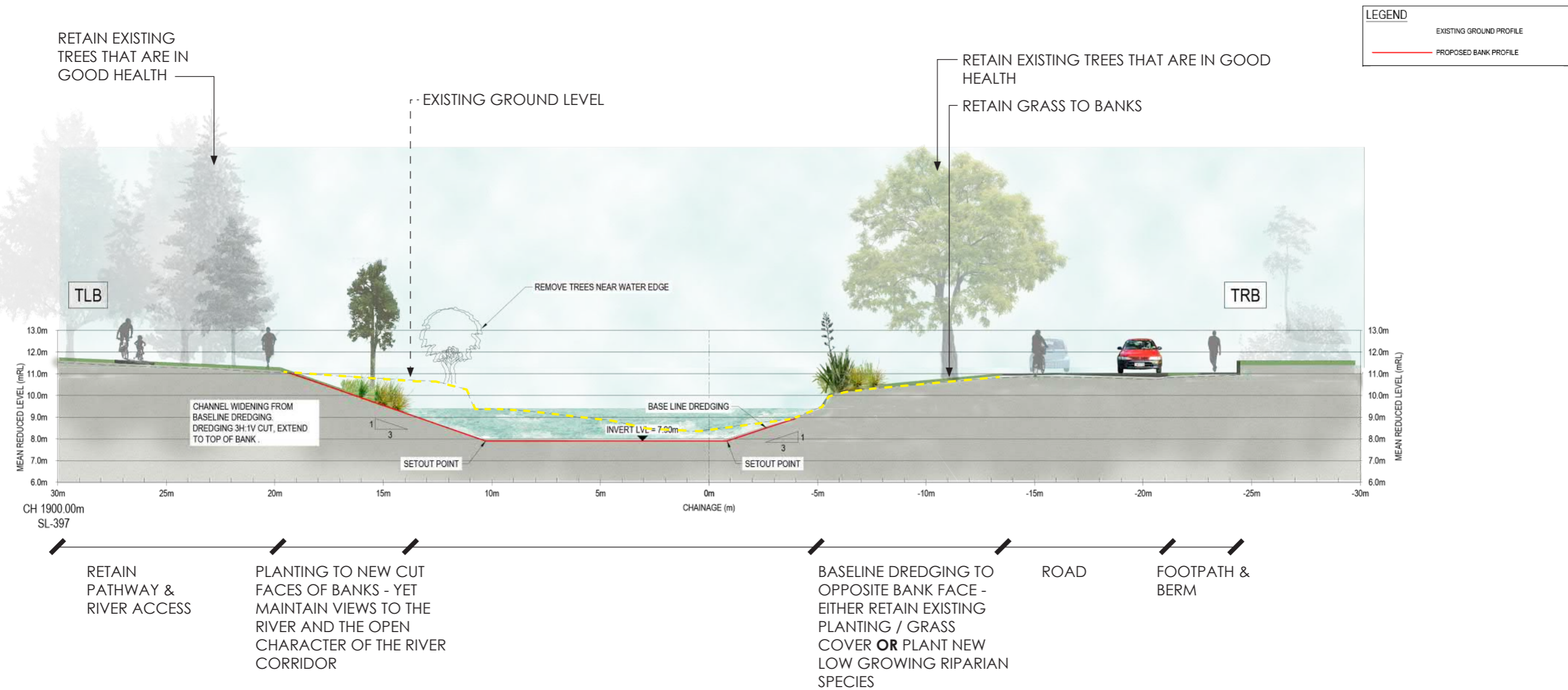
Job No: 310101275

**CONCEPT PLANS FOR PUBLIC COMMENTS
 HANSEN PARK TO OPAWA ROAD**

Drawn By: BCJ
 Scale: AS SHOWN

FIG: 3-B

**TYPICAL SECTION: SECTION OF BANK WIDENING
KEY AREA 5 - OPPOSITE AYSLEY TERRACE / GRANGE STREET**



BANK WIDENING:

- FOUR AREAS HAVE BEEN SELECTED WITH THE AIM OF RESTORING THE RIVER'S CAPACITY TO CONVEY WATER DURING A FLOOD (10YR EVENT)
- INVOLVES CUTTING INTO THE EXISTING BANK
- THE FOUR AREAS WERE SELECTED WHERE TREES ARE NOT ESTABLISHED ON THE BANK, ABLE TO BE RELOCATED (SMALL ENOUGH) OR IN POOR CONDITION
- TREES REMOVED ARE TO BE REPLANTED OR REPLACED
- LOCALISED PLANTING TO CONSIST OF LOW NATIVE PLANTS TO MAINTAIN VIEWS TO THE RIVER
- INCLUDE NEW TREES TO REPLACE SPECIES IN POOR HEALTH AND TO MEET OUTCOMES OF THE MID HEATHCOTE RIVER MASTERPLAN (2009)
- RETAIN OR REINSTATE GRASS TO MAINTAIN ACCESS TO THE RIVER

BENEFITS INCLUDE:

- INCREASING RIVER CAPACITY
- IMPROVING OPPORTUNITIES FOR VIEWS AND ACCESS
- OPPORTUNITIES TO BUILD ON AND INVOLVE THE WIDER COMMUNITY IN PLANTING OR OTHER INITIATIVES
- ENHANCING ECOLOGICAL VALUES & AMENITY



HEATHCOTE DREDGING S3.4

CROSS SECTION

1:200 @ A3



SHEET 6 OF 6

DRAWN	KT	CHECKED	REVIEWED	APPROVED
-------	----	---------	----------	----------

CONCEPT FOR PUBLIC COMMENT | 2 SEPTEMBER 2019



ARTISTS IMPRESSION:
PROPOSED PLANTING
SHOWN AT MATURITY