



Thinking longer-term

**Professor David Norton
Banks Peninsula Conservation Trust
& University of Canterbury**



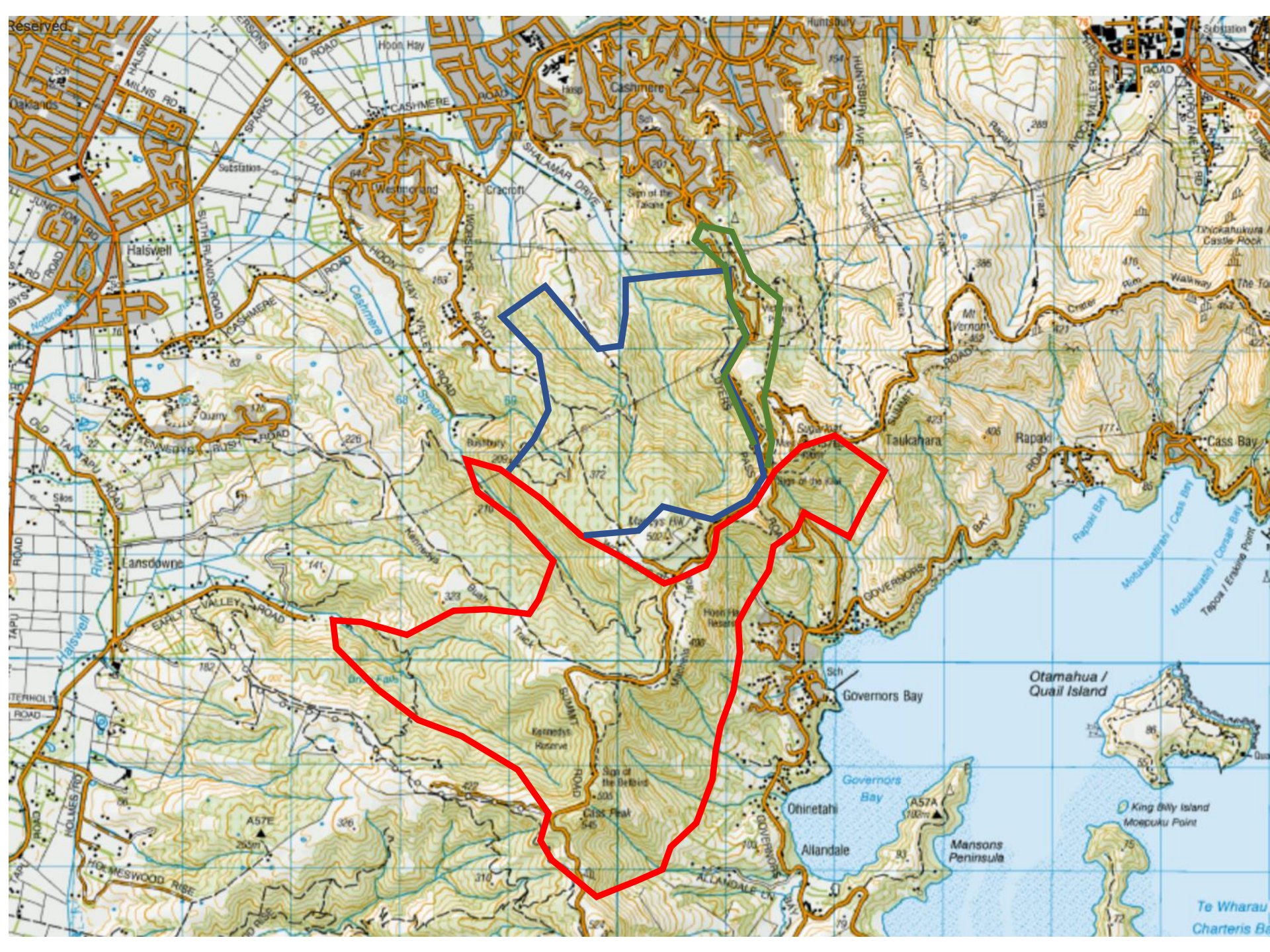
2050 Ecological Vision for Banks Peninsula

Goal 4

Four core indigenous forest areas of more than 1000 ha each have been protected.

What does success look like?

The four core areas are mapped, covenanted (or otherwise protected in perpetuity) and fenced. Each area has a plan developed for the collaborative management of plant and animal pests. The community is aware of, and involved in the care of the areas.



Reserved

MILNLS RD
SPARKS ROAD
ROAD

Halswell
SOUTH PLAINS ROAD
CASHMERE

Westmeadows
HOOBY ROAD
CASHMERE

Quymy
REVIEWS ROAD
CASHMERE

Lansdowne
EARLY VALLEY ROAD
CASHMERE

Barbarby
HAY VALLEY ROAD
CASHMERE

Sign of the Bellbird
CASHMERE

Sign of the Bellbird
CASHMERE

Sign of the Bellbird
CASHMERE

Sign of the Bellbird
CASHMERE

CASHMERE
SHALAMAR DRIVE
CASHMERE

Sign of the Falcon
CASHMERE

Sign of the Falcon
CASHMERE

Sign of the Falcon
CASHMERE

Sign of the Falcon
CASHMERE

Sign of the Falcon
CASHMERE

Sign of the Falcon
CASHMERE

Sign of the Falcon
CASHMERE

Sign of the Falcon
CASHMERE

Sign of the Falcon
CASHMERE

Sign of the Falcon
CASHMERE

Sign of the Falcon
CASHMERE

Sign of the Falcon
CASHMERE

Sign of the Falcon
CASHMERE

Sign of the Falcon
CASHMERE

Sign of the Falcon
CASHMERE

Sign of the Falcon
CASHMERE

Sign of the Falcon
CASHMERE

Sign of the Falcon
CASHMERE

Sign of the Falcon
CASHMERE

Otamahua / Quail Island

Manions Peninsula

Ohinetahi

Allandale

Te Wharau
Charteris Bay



3.5 pt



- Losses are substantial but some core areas still remain with good regenerating forest
- Some mature podocarps, especially thin-barked tōtara (& the handful of matai in Kennedy's Bush SR), have survived
- Opportunity for a native forest core area >1000 ha still remains despite devastation
- To do this need to think about:
 - Restoring connections between remaining native areas
 - Enhancing connections north to Victoria Park & city suburbs (including Adventure Park)
 - Developing planting programmes that include 'green' firebreaks to protect core area
 - Developing a community-driven and collaboratively managed long-term plan to achieve this (including integrating plant & animal pest control)