



Track system to allow for a link from existing formed track through the plantation and returning back to the main track.

Opportunity for seat at this significant look out point.

Step and track access from Reserve Terrace. Planting here to be supplemented with additional native species.

Access from Foster Terrace.

Area to be managed as open rough grassland area until natural regeneration has occurred.

Area behind properties on Foster Terrace to be managed as a fire break, using low flammability, low growing native plant species.

Areas designated for native plantings to be carried out and managed by the Lyttelton Reserves Committee supported by local schools, community groups and by the CCC Park Rangers. Some open glade areas to be maintained for passive recreation.

Area planted with native species by the Lyttelton Reserves Committee and community groups. Species planted include the following; ngaio, narrow leaved lacebark, ribbonwood and olearia.

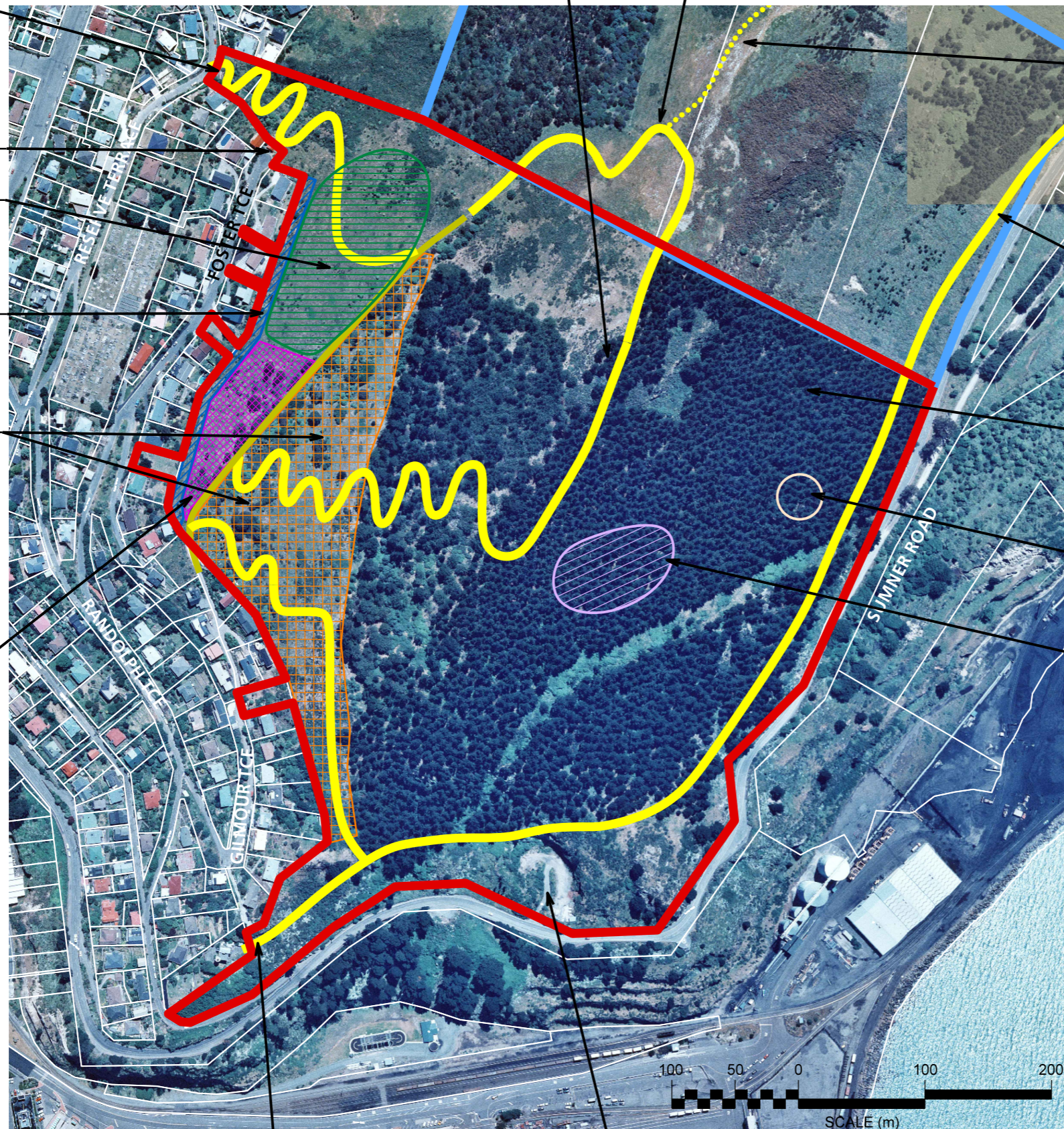
Opportunity to create a poled route from the main track across Lyttelton Port Company land and Department of Conservation land to connect with the Crater Rim Walkway.





Opportunity to create a multi-use track (indicative alignment only)

Pine plantation to be retained and included in the overall management of the reserve. Regenerating native seedlings to be encouraged in areas of natural clearings and windthrow.

1870's Polhill Bay Shooting Ranges. Historic site to be interpreted.

Areas of windthrown pines with regenerating native trees and shrubs. Pine seedlings and weeds to be removed to allow native plants to become established.



KEY	
	Reserve boundary
	Port Company land
	Emergency and maintenance vehicle track
	Proposed track (indicative alignment only)

Location of drinking fountain to be determined, on site.

Pedestrian access opportunity from the Time Ball Station.

Old Quarry site retained for reserve purposes.

© Copyright Christchurch City Council © Aerial Photography Copyright Terralink International Ltd